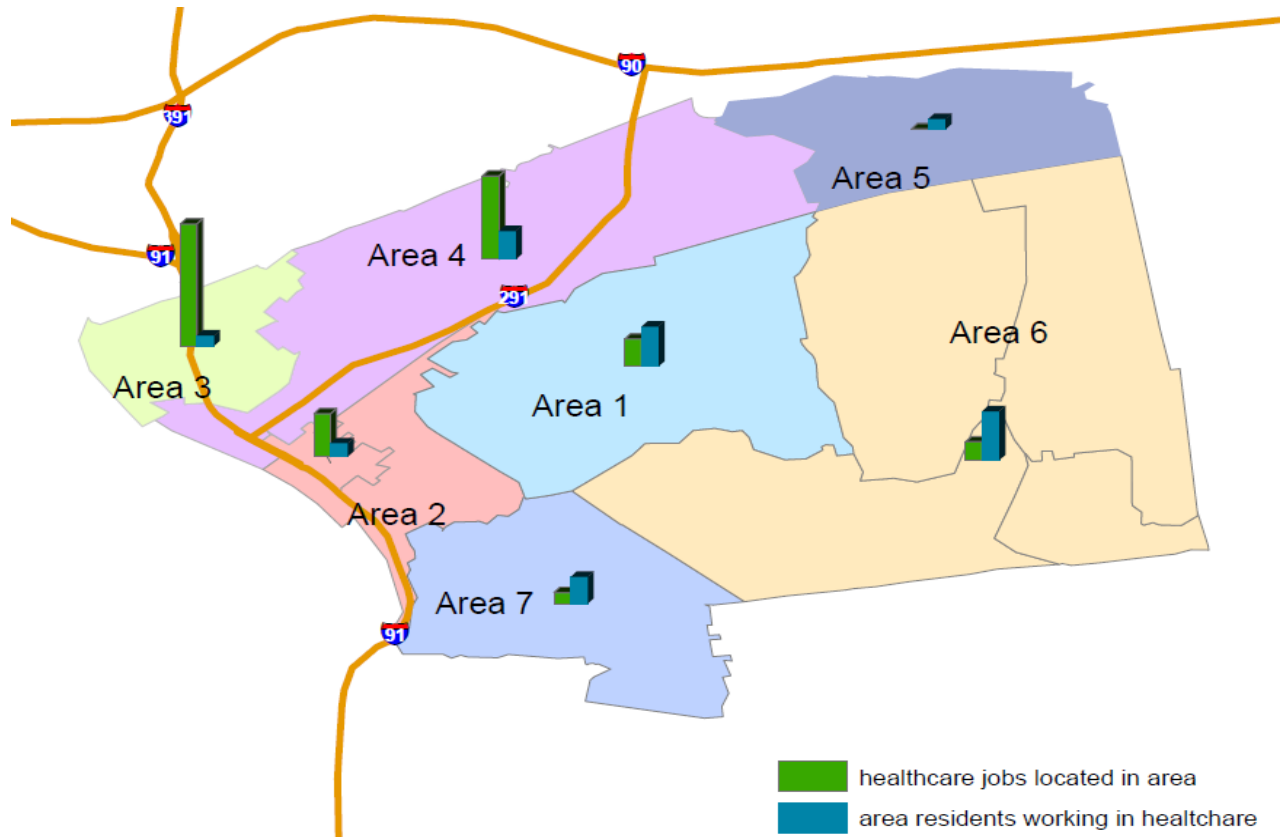


Employment in Healthcare and Social Assistance Services, 2006 (number of jobs and number of residents by area)



Employment in Healthcare and Social Assistance Services

Area	1	2	3	4	5	6	7
Jobs	1,705	2,678	7,618	5,186	22	1,142	682
Employed residents	2,475	835	671	1,762	638	3,054	1,673

Source: U.S. Bureau of the Census. 2006 Zip Code Business Patterns (ZBP), Decennial Census (2000).