

Historical Data: Nonagricultural Employment by Industry (thousands of jobs, annual averages)

	1998	1999	2000	2001	2002	2003	2004	2005	2006	2007	Annual Rate of Change	
											2006-2007	1998-2007
Total (seasonally adjusted)												
United States	125,923	128,992	131,794	131,830	130,340	129,996	131,419	133,695	136,092	137,618	1.1	1.0
New England	6,728.4	6,860.7	7,023.2	7,036.3	6,927.5	6,850.7	6,875.1	6,918.2	6,983.7	7,042.9	0.8	0.5
Connecticut	1,643.4	1,669.1	1,693.2	1,681.1	1,664.9	1,644.5	1,649.8	1,662.0	1,680.6	1,697.7	1.0	0.4
Maine	569.2	586.3	603.5	608.2	606.4	606.7	611.7	611.7	614.7	617.4	0.4	0.9
Massachusetts	3,183.9	3,242.6	3,329.0	3,339.3	3,259.1	3,198.3	3,194.9	3,211.6	3,245.5	3,278.1	1.0	0.3
New Hampshire	589.0	605.7	622.1	627.2	618.4	617.8	627.4	636.3	641.9	648.9	1.1	1.1
Rhode Island	458.0	465.4	476.8	478.5	479.4	484.2	488.5	491.1	493.3	493.0	-0.1	0.8
Vermont	285.0	291.6	298.7	302.1	299.3	299.2	302.9	305.5	307.7	307.8	0.0	0.9

Natural Resources and Mining (not seasonally adjusted)

United States	645	598	599	606	583	572	591	628	684	723	5.7	1.4
New England	7.1	7.0	7.2	7.3	7.1	7.2	7.4	7.5	7.5	7.2	-4.0	0.3
Connecticut	0.8	0.8	0.8	0.7	0.8	0.7	0.7	0.7	0.8	0.7	-4.3	-0.3
Maine	2.7	2.7	2.7	2.7	2.6	2.5	2.6	2.7	2.7	2.7	-2.1	0.0
Massachusetts	1.4	1.4	1.4	1.5	1.6	1.8	1.9	2.0	1.8	1.6	-12.8	1.7
New Hampshire	1.0	1.0	1.1	1.0	0.9	0.9	1.0	1.0	1.1	1.1	3.1	1.2
Rhode Island	0.2	0.2	0.2	0.2	0.2	0.2	0.2	0.3	0.3	0.3	0.0	4.2
Vermont	1.0	1.1	1.1	1.1	1.0	0.9	0.9	0.8	0.9	0.9	-1.0	-1.7

Construction (seasonally adjusted)

United States	6,147	6,545	6,788	6,827	6,715	6,736	6,973	7,333	7,693	7,616	-1.0	2.4
New England	244.7	263.9	280.9	295.5	295.7	294.2	301.8	304.2	309.1	303.7	-1.7	2.5
Connecticut	58.6	60.9	64.6	65.4	63.4	61.9	65.7	66.0	67.1	68.5	2.0	1.8
Maine	25.0	27.8	29.2	29.8	29.4	30.5	30.8	30.6	31.3	30.8	-1.6	2.4
Massachusetts	108.5	118.8	129.1	139.0	140.7	136.7	138.4	139.5	141.1	137.4	-2.6	2.8
New Hampshire	23.1	24.2	25.0	27.2	27.9	28.9	29.3	29.4	29.4	28.1	-4.2	2.3
Rhode Island	16.0	17.8	18.2	19.0	19.5	20.7	21.0	21.8	22.8	22.1	-3.2	3.7
Vermont	13.6	14.5	14.9	15.2	14.8	15.4	16.7	16.9	17.4	16.8	-3.2	2.5

Manufacturing (seasonally adjusted)

United States	17,560	17,323	17,265	16,440	15,257	14,508	14,315	14,226	14,158	13,883	-1.9	-2.5
New England	965.1	939.8	938.4	900.7	815.8	765.0	747.1	733.7	720.4	710.5	-1.4	-3.3
Connecticut	247.9	240.3	235.7	226.7	211.2	200.0	197.2	195.2	193.5	191.3	-1.1	-2.8
Maine	81.2	80.5	79.5	74.6	68.0	64.1	63.0	61.4	60.0	59.1	-1.6	-3.4
Massachusetts	413.0	400.3	403.2	388.6	348.8	324.3	312.9	305.3	299.7	295.5	-1.4	-3.6
New Hampshire	103.7	101.3	102.5	97.4	85.0	80.4	80.1	80.2	78.3	77.8	-0.6	-3.1
Rhode Island	74.9	72.2	71.2	67.8	62.3	58.7	57.0	54.9	52.7	50.8	-3.6	-4.2
Vermont	44.6	45.3	46.3	45.6	40.5	37.5	36.9	36.8	36.2	35.9	-0.8	-2.3

1998 1999 2000 2001 2002 2003 2004 2005 2006 2007 **Annual Rate of Change**
2006-2007 1998-2007

Trade, Transportation, and Utilities (seasonally adjusted)

United States	25,186	25,770	26,225	25,986	25,500	25,287	25,532	25,960	26,278	26,605	1.2	0.6
New England	1,256.9	1,285.4	1,311.7	1,303.5	1,289.9	1,280.0	1,284.1	1,286.0	1,288.0	1,290.0	0.2	0.3
Connecticut	308.6	312.1	317.5	312.2	309.2	305.5	307.9	310.6	310.9	311.6	0.2	0.1
Maine	115.9	119.5	122.7	123.7	123.3	123.2	125.2	125.2	125.7	126.3	0.5	1.0
Massachusetts	575.6	588.0	596.8	592.3	579.9	573.9	572.2	570.1	570.5	570.9	0.1	-0.1
New Hampshire	126.3	133.6	137.1	137.3	138.2	138.4	139.7	140.7	141.6	142.1	0.4	1.3
Rhode Island	74.7	75.6	79.6	79.3	80.5	80.8	80.2	80.1	79.8	79.8	0.1	0.8
Vermont	55.8	56.6	58.0	58.6	58.8	58.3	58.9	59.4	59.5	59.1	-0.7	0.7

Retail Trade (seasonally adjusted)

United States	14,610	14,971	15,279	15,240	15,027	14,918	15,059	15,281	15,356	15,487	0.9	0.7
New England	795.2	816.1	832.0	826.0	826.0	819.3	824.6	823.9	819.2	817.3	-0.2	0.3
Connecticut	191.7	194.7	197.5	194.5	194.3	191.3	192.0	192.0	191.3	191.2	0.0	0.0
Maine	80.1	82.8	85.6	86.2	85.9	85.5	87.2	87.1	87.2	87.8	0.7	1.0
Massachusetts	349.7	358.3	362.8	358.7	356.9	353.9	355.3	354.4	350.5	348.4	-0.6	0.0
New Hampshire	87.2	92.4	94.6	94.9	95.8	95.9	97.0	97.5	98.0	98.1	0.1	1.3
Rhode Island	48.8	49.4	52.1	51.7	53.1	53.2	53.0	52.4	51.8	51.7	-0.2	0.7
Vermont	37.6	38.5	39.5	39.9	40.0	39.5	40.1	40.5	40.5	40.1	-0.9	0.7

Wholesale Trade (not seasonally adjusted)

United States	5,795	5,893	5,933	5,773	5,652	5,607	5,663	5,764	5,905	6,028	2.1	0.5
New England	271.3	273.6	279.4	282.4	275.8	275.0	274.6	276.1	281.5	283.3	0.6	0.5
Connecticut	66.4	66.1	68.2	67.4	66.0	65.5	65.8	66.5	67.5	68.0	0.7	0.3
Maine	18.7	19.4	19.5	20.2	20.4	21.1	21.4	21.4	21.5	21.2	-1.1	1.4
Massachusetts	137.7	138.6	139.5	141.5	136.3	135.1	133.7	133.8	137.1	138.2	0.8	0.1
New Hampshire	23.5	24.5	25.8	26.7	26.6	26.7	27.2	27.5	28.0	28.5	1.6	2.2
Rhode Island	15.4	15.7	16.6	16.5	16.5	16.4	16.4	16.8	17.0	17.1	0.5	1.2
Vermont	9.5	9.4	9.8	10.1	10.1	10.3	10.2	10.1	10.4	10.3	-0.4	0.9

Information (not seasonally adjusted)

United States	3,218	3,419	3,630	3,629	3,395	3,188	3,118	3,061	3,038	3,029	-0.3	-0.6
New England	182.7	187.0	201.4	200.0	182.9	171.9	167.3	165.9	165.5	166.9	0.9	-0.9
Connecticut	44.3	44.7	46.4	44.7	41.0	39.6	39.0	38.1	37.9	38.5	1.5	-1.5
Maine	11.1	11.7	12.1	12.2	11.6	11.4	11.2	11.2	11.2	11.3	0.7	0.3
Massachusetts	97.8	100.3	111.1	111.4	99.6	91.3	87.4	86.9	86.9	88.4	1.7	-0.9
New Hampshire	12.5	13.1	14.0	13.7	12.9	12.2	12.6	12.7	12.5	12.3	-1.6	-0.1
Rhode Island	10.6	10.6	10.9	11.3	11.2	11.0	10.8	10.8	11.0	10.5	-3.9	0.0
Vermont	6.6	6.7	6.8	6.8	6.7	6.5	6.4	6.2	6.0	6.0	-1.1	-1.0

Historical Data: Nonagricultural Employment by Industry (con't) (thousands of jobs, annual averages)

	1998	1999	2000	2001	2002	2003	2004	2005	2006	2007	Annual Rate of Change	
											2006-2007	1998-2007
Financial Activities (not seasonally adjusted)												
United States	7,462	7,648	7,687	7,808	7,847	7,977	8,031	8,153	8,328	8,308	-0.2	1.2
New England	463.1	477.6	483.4	489.8	488.5	485.3	480.0	484.7	489.4	489.3	0.0	0.6
Connecticut	137.0	140.8	143.0	142.9	142.6	142.7	140.7	142.3	144.3	144.6	0.2	0.6
Maine	31.2	32.8	34.1	35.1	35.1	35.1	34.9	34.2	33.6	33.3	-1.1	0.8
Massachusetts	221.6	226.8	228.1	230.6	228.1	223.7	219.7	221.4	223.9	224.9	0.4	0.2
New Hampshire	32.3	34.2	34.1	35.7	36.6	37.0	37.4	39.4	39.4	38.5	-2.3	2.0
Rhode Island	28.3	29.9	31.1	32.2	32.9	33.7	34.0	34.3	35.1	34.9	-0.4	2.4
Vermont	12.8	13.2	13.0	13.2	13.2	13.2	13.3	13.2	13.2	13.2	-0.1	0.4

Professional and Business Services (seasonally adjusted)

United States	15,142	15,955	16,672	16,480	15,975	15,985	16,387	16,949	17,572	17,966	2.2	2.0
New England	812.8	847.5	890.7	875.1	830.4	812.7	829.8	847.1	868.5	884.9	1.9	1.0
Connecticut	203.9	211.5	215.9	209.9	202.0	196.8	197.0	199.9	204.3	206.0	0.8	0.1
Maine	46.6	48.3	51.8	51.8	51.4	50.3	49.6	50.3	52.0	53.6	3.0	1.6
Massachusetts	441.5	462.1	492.8	485.2	453.5	440.6	451.0	460.8	471.7	481.4	2.1	1.0
New Hampshire	53.2	55.5	58.6	56.9	54.3	54.7	57.3	59.2	61.8	65.6	6.1	2.4
Rhode Island	47.9	49.5	50.9	50.5	48.9	50.0	53.6	55.1	56.4	56.1	-0.5	1.8
Vermont	19.7	20.6	20.7	20.7	20.2	20.4	21.3	21.9	22.2	22.3	0.4	1.4

Education and Health Services (seasonally adjusted)

United States	14,445	14,795	15,109	15,643	16,201	16,588	16,951	17,372	17,825	18,327	2.8	2.7
New England	1,069.8	1,082.8	1,101.5	1,130.0	1,163.0	1,182.9	1,202.8	1,222.9	1,252.0	1,286.8	2.8	2.1
Connecticut	237.8	242.4	245.3	252.6	259.7	264.0	268.7	273.3	279.6	287.6	2.8	2.1
Maine	90.0	94.2	97.5	100.8	104.9	107.3	110.9	112.2	114.1	116.1	1.8	2.9
Massachusetts	536.4	538.2	545.5	554.9	568.4	575.5	582.2	590.1	605.6	623.6	3.0	1.7
New Hampshire	80.6	81.5	84.0	89.0	91.8	93.0	95.0	97.8	100.3	103.5	3.2	2.8
Rhode Island	81.6	82.3	83.3	84.9	88.0	91.0	93.0	95.3	97.1	99.3	2.3	2.2
Vermont	43.4	44.3	46.0	47.9	50.1	52.2	53.0	54.2	55.4	56.8	2.5	3.1

Leisure and Hospitality (seasonally adjusted)

United States	11,232	11,544	11,860	12,032	11,986	12,175	12,494	12,813	13,107	13,470	2.8	2.0
New England	562.2	577.9	589.0	594.6	606.7	614.4	623.9	628.0	636.4	646.0	1.5	1.6
Connecticut	116.8	119.7	121.1	119.5	122.8	125.1	127.6	129.5	132.6	135.7	2.3	1.7
Maine	53.2	54.2	55.9	56.4	57.3	58.4	58.8	59.2	59.9	60.1	0.4	1.4
Massachusetts	262.8	270.5	274.6	279.4	284.8	287.6	290.8	292.6	296.6	301.6	1.7	1.5
New Hampshire	55.3	56.9	58.3	59.5	60.8	61.5	63.8	63.2	63.9	64.5	1.0	1.7
Rhode Island	41.9	44.1	46.3	46.8	48.0	49.0	49.8	50.3	50.2	51.2	2.1	2.3
Vermont	32.1	32.5	32.9	32.9	33.0	32.7	33.1	33.2	33.3	32.9	-1.1	0.3

	1998	1999	2000	2001	2002	2003	2004	2005	2006	2007	Annual Rate of Change	
											2006-2007	1998-2007
Other Services (not seasonally adjusted)												
United States	4,976	5,087	5,168	5,258	5,372	5,401	5,409	5,395	5,438	5,491	1.0	1.1
New England	230.9	239.0	244.9	251.9	253.8	253.4	253.9	255.3	256.8	258.9	0.8	1.3
Connecticut	60.1	60.7	61.0	62.1	62.8	62.2	62.5	62.8	63.7	64.3	0.9	0.8
Maine	17.7	18.0	18.3	19.1	19.8	20.3	20.0	20.0	19.7	19.9	0.9	1.3
Massachusetts	103.4	108.0	111.1	116.1	117.5	117.1	116.9	117.9	118.9	119.7	0.7	1.7
New Hampshire	21.3	23.1	24.0	23.6	21.6	20.7	21.1	21.3	21.5	22.0	2.1	0.5
Rhode Island	19.1	19.9	20.8	21.2	22.0	23.0	23.4	23.3	23.1	23.2	0.5	2.2
Vermont	9.4	9.3	9.7	10.0	10.1	10.1	10.1	10.0	9.9	9.9	-0.3	0.6

Government (seasonally adjusted)

United States	19,910	20,312	20,790	21,120	21,509	21,580	21,620	21,806	21,971	22,200	1.0	1.2
New England	933.1	952.7	974.2	988.0	993.8	983.9	977.2	982.9	990.0	998.3	0.8	0.8
Connecticut	227.8	235.2	241.9	244.4	249.3	246.0	242.8	243.7	245.9	249.0	1.3	1.0
Maine	94.6	96.7	99.6	102.0	103.1	103.7	104.7	104.8	104.4	104.3	-0.2	1.1
Massachusetts	421.9	428.3	435.4	440.3	436.2	425.9	421.5	424.9	429.0	433.1	1.0	0.3
New Hampshire	79.7	81.5	83.5	85.8	88.3	90.1	90.3	91.5	92.2	93.4	1.3	1.8
Rhode Island	62.9	63.4	64.4	65.2	66.1	66.2	65.5	64.9	64.9	64.6	-0.5	0.3
Vermont	46.2	47.6	49.4	50.2	50.9	52.0	52.4	53.0	53.7	54.0	0.7	1.8

Historical Data: Unemployment (seasonally adjusted, annual averages)

Unemployment Rate (percent)	1998	1999	2000	2001	2002	2003	2004	2005	2006	2007	Annual Rate of Change	
											2006-2007	1998-2007
United States	4.5	4.2	4.0	4.7	5.8	6.0	5.5	5.1	4.6	4.6	*	*
New England	3.5	3.2	2.8	3.6	4.8	5.4	4.9	4.7	4.5	4.4	*	*
Connecticut	3.2	2.7	2.3	3.1	4.4	5.5	4.9	4.9	4.4	4.6	*	*
Maine	4.5	4.0	3.3	3.8	4.4	5.0	4.6	4.8	4.6	4.8	*	*
Massachusetts	3.4	3.3	2.8	3.7	5.3	5.8	5.2	4.9	4.8	4.5	*	*
New Hampshire	2.9	2.8	2.7	3.4	4.6	4.5	3.9	3.6	3.5	3.6	*	*
Rhode Island	4.6	4.2	4.2	4.5	5.1	5.4	5.2	5.1	5.1	5.0	*	*
Vermont	3.1	3.0	2.7	3.3	4.0	4.5	3.7	3.5	3.7	3.9	*	*

Civilian Labor Force (thousands)

United States	137,680	139,380	142,586	143,769	144,856	146,500	147,383	149,295	151,415	153,129	1.1	1.2
New England	7,257.2	7,326.9	7,348.3	7,423.8	7,495.6	7,507.8	7,481.0	7,520.2	7,606.8	7,647.5	0.5	0.6
Connecticut	1,741.6	1,742.2	1,736.8	1,754.9	1,779.0	1,795.0	1,793.9	1,812.2	1,836.0	1,865.5	1.6	0.8
Maine	657.4	667.7	672.5	676.0	680.6	684.7	686.8	695.7	703.2	704.7	0.2	0.8
Massachusetts	3,321.7	3,355.3	3,365.6	3,401.4	3,424.4	3,406.7	3,380.2	3,375.0	3,405.2	3,408.2	0.1	0.3
New Hampshire	670.6	684.9	694.3	704.9	712.2	711.1	715.6	722.9	731.7	738.3	0.9	1.1
Rhode Island	534.0	541.4	543.4	545.5	553.8	563.6	557.1	565.0	574.9	577.0	0.4	0.9
Vermont	331.9	335.4	335.8	341.2	345.6	346.8	347.3	349.4	355.7	353.9	-0.5	0.7

Number Unemployed (thousands)

United States	6,204	5,879	5,685	6,830	8,375	8,770	8,141	7,580	6,994	7,079	1.2	2.0
New England	253.0	234.1	203.9	266.2	363.0	407.5	366.5	353.0	344.9	340.1	-1.4	4.6
Connecticut	56.8	46.2	39.2	54.8	78.0	98.1	88.3	88.3	80.4	85.0	5.8	6.8
Maine	29.5	26.3	22.1	25.3	29.6	34.2	31.7	33.7	32.5	33.4	2.6	2.0
Massachusetts	112.7	109.6	92.3	126.0	181.0	197.6	176.9	163.9	163.7	152.6	-6.8	5.1
New Hampshire	19.3	18.8	18.7	24.2	32.4	31.7	27.7	26.3	25.8	26.3	1.9	4.5
Rhode Island	24.5	22.6	22.7	24.8	28.1	30.3	29.1	28.7	29.3	29.1	-0.8	2.1
Vermont	10.2	9.8	9.1	11.1	13.9	15.5	12.9	12.2	13.2	13.8	4.6	4.2

Average Weekly Claims for Unemployment Insurance

United States	316,492	296,508	299,358	406,100	404,067	401,792	342,617	331,208	313,067	322,275	2.9	1.0
New England	15,988	15,046	14,335	20,607	21,615	20,535	17,435	16,860	16,438	16,983	3.3	1.7
Connecticut	3,925	3,879	3,519	5,255	5,496	5,052	4,356	4,292	4,191	4,279	2.1	2.2
Maine	1,584	1,421	1,413	1,602	1,567	1,479	1,443	1,343	1,331	1,350	1.4	-1.6
Massachusetts	7,048	6,642	6,489	9,669	10,552	10,049	8,210	7,847	7,575	7,828	3.3	2.5
New Hampshire	674	611	559	1,244	1,220	1,111	984	947	958	1,012	5.7	9.5
Rhode Island	2,026	1,823	1,697	1,939	1,822	1,765	1,642	1,565	1,545	1,659	7.4	-1.9
Vermont	733	670	659	899	959	1,079	800	866	838	855	2.0	3.0

Historical Data: New England City and Town Areas (NECTAs) (seasonally adjusted, annual averages)

	1998	1999	2000	2001	2002	2003	2004	2005	2006	2007	Annual Rate of Change	
Total Nonagricultural Employment (thousands of jobs)											2006-2007	1998-2007
Connecticut												
Bridgeport-Stamford-Norwalk	416.5	420.8	426.3	422.2	414.4	410.4	410.0	411.1	416.3	421.1	1.2	0.1
Danbury	69.2	69.2	70.1	69.2	69.3	68.4	68.4	69.0	69.2	69.9	1.0	0.1
Hartford-West Hartford-East Hartford	543.0	551.0	556.8	553.8	544.6	535.4	537.6	543.8	550.3	556.6	1.1	0.3
New Haven	267.8	272.8	274.5	273.5	274.5	270.0	271.9	273.3	276.2	277.5	0.5	0.4
Norwich-New London	125.6	127.5	128.0	130.8	133.9	134.0	134.1	135.7	135.7	136.4	0.5	0.9
Waterbury	71.1	71.5	71.4	69.8	69.0	68.5	68.8	68.7	68.6	68.3	-0.4	-0.4
Maine												
Bangor	58.5	60.2	62.2	63.3	63.6	64.3	64.9	65.6	65.9	65.9	0.0	1.3
Portland-South Portland-Biddeford	172.6	177.0	182.7	185.8	186.4	189.1	192.2	192.6	193.9	195.7	0.9	1.4
Massachusetts												
Barnstable Town	89.2	92.3	95.3	96.8	98.3	100.0	101.1	100.8	101.1	100.8	-0.3	1.4
Boston-Cambridge-Quincy	2426.7	2473.5	2538.7	2535.0	2465.7	2410.3	2404.8	2423.3	2451.3	2482.4	1.3	0.3
Boston-Cambridge-Quincy Division	1686.0	1708.3	1748.8	1745.7	1694.1	1648.8	1640.7	1649.0	1673.7	1702.4	1.7	0.1
Brockton-Bridgewater-Easton	88.9	90.0	91.5	90.9	90.0	88.4	88.9	88.8	89.7	90.0	0.3	0.1
Framingham	142.1	146.7	153.7	156.5	151.9	148.4	150.7	154.0	155.1	157.4	1.4	1.2
Haverhill-North Andover-Amesbury	79.0	80.4	81.6	81.4	77.8	75.7	75.6	76.9	78.1	78.4	0.4	-0.1
Lowell-Billerica-Chelmsford	113.1	117.1	123.1	124.2	120.8	118.0	117.2	117.8	118.6	119.3	0.6	0.6
Peabody	101.7	102.0	102.7	104.0	103.5	102.1	101.4	101.7	101.9	101.3	-0.6	0.0
Nashua	119.2	122.4	125.3	126.2	122.9	126.4	129.4	132.6	132.6	132.9	0.2	1.2
New Bedford	66.0	66.8	67.9	66.8	66.6	64.1	64.7	65.6	66.8	66.6	-0.3	0.1
Springfield	290.8	295.7	301.8	303.0	299.1	294.6	295.3	296.2	297.7	297.7	0.0	0.3
Worcester	238.6	241.3	245.1	245.8	243.7	243.1	244.1	244.2	247.3	248.0	0.3	0.4
New Hampshire												
Manchester	90.9	93.4	95.2	96.4	95.8	97.3	99.0	98.8	99.5	100.9	1.5	1.2
Portsmouth	46.6	48.2	50.8	51.7	52.1	53.0	54.5	55.0	55.3	55.9	1.0	2.1
Rochester-Dover	50.6	50.8	51.6	51.7	51.9	53.4	54.3	54.8	55.7	56.4	1.2	1.2
Rhode Island												
Providence-Fall River-Warwick	554.8	565.2	576.2	573.4	574.2	577.5	581.7	582.5	584.3	582.8	-0.3	0.6
Vermont												
Burlington-South Burlington	104.9	108.3	113.0	113.6	111.8	111.5	113.0	113.1	113.6	113.9	0.3	0.9

Historical Data: NECTAs (con't) (seasonally adjusted, annual averages)

	1998	1999	2000	2001	2002	2003	2004	2005	2006	2007	Annual Rate of Change	
											2006-2007	1998-2007
Unemployment Rate (percent)												
Connecticut												
Bridgeport-Stamford-Norwalk	3.0	2.5	2.0	3.1	4.3	5.1	4.5	4.5	3.9	4.1	*	*
Danbury	2.5	2.1	1.7	2.5	3.4	4.2	3.8	3.7	3.3	3.5	*	*
Hartford-West Hartford-East Hartford	3.3	2.8	2.3	3.2	4.5	5.7	5.2	5.0	4.4	4.7	*	*
New Haven	3.2	2.6	2.3	3.1	4.3	5.4	4.9	5.0	4.5	4.8	*	*
Norwich-New London	3.8	2.8	2.4	2.9	4.0	4.8	4.5	4.5	4.2	4.2	*	*
Waterbury	4.1	3.3	2.8	4.4	6.0	7.2	6.3	6.3	5.5	5.8	*	*
Maine												
Bangor	4.0	3.5	3.3	3.7	4.1	4.6	4.7	4.6	4.6	4.7	*	*
Lewiston-Auburn	4.8	3.8	3.2	3.9	4.3	5.0	4.4	4.8	4.6	4.7	*	*
Portland-South Portland-Biddeford	2.6	2.3	2.4	2.9	3.3	3.6	3.4	3.6	3.4	3.5	*	*
Massachusetts												
Barnstable Town	4.5	3.9	3.1	3.7	4.6	5.1	4.8	4.7	5.0	4.9	*	*
Boston-Cambridge-Quincy	3.1	3.0	2.5	3.6	5.3	5.7	5.0	4.5	4.6	4.3	*	*
Boston-Cambridge-Quincy Division	2.7	2.7	2.4	3.4	5.0	5.4	4.7	4.3	4.4	4.1	*	*
Brockton-Bridgewater-Easton	3.8	3.6	2.8	3.8	5.3	6.0	5.6	5.3	5.5	5.3	*	*
Framingham	2.5	2.6	2.2	3.2	4.9	5.2	4.3	3.9	4.0	3.7	*	*
Haverhill-North Andover-Amesbury	3.8	3.5	2.7	4.0	5.8	5.9	5.3	4.7	4.5	4.5	*	*
Lawrence-Methuen-Salem	6.7	6.1	4.4	6.6	9.4	9.5	8.5	7.6	7.4	7.1	*	*
Lowell-Billerica-Chelmsford	3.5	3.4	2.7	4.2	6.4	6.7	5.7	5.1	5.0	4.8	*	*
Peabody	3.3	3.2	2.6	3.7	5.3	6.0	5.5	5.0	5.2	4.7	*	*
Taunton-Norton-Raynham	3.5	3.4	2.7	3.6	5.0	5.5	5.2	4.8	5.2	4.9	*	*
Nashua	3.0	3.1	2.7	3.9	5.4	5.2	4.3	3.9	3.6	3.7	*	*
Leominster-Fitchburg-Gardner	4.1	4.2	3.2	4.5	6.5	7.0	6.5	6.4	6.4	6.0	*	*
New Bedford	6.7	6.1	4.4	5.4	6.9	7.7	7.0	6.8	6.8	6.6	*	*
Pittsfield	4.3	4.1	3.0	3.6	4.6	5.1	4.7	4.4	4.5	4.5	*	*
Springfield	3.9	3.6	2.9	3.8	5.2	6.0	5.6	5.3	5.5	5.3	*	*
Worcester	3.3	3.2	2.7	3.8	5.4	6.0	5.4	5.0	5.2	5.0	*	*
New Hampshire												
Manchester	2.5	2.4	2.5	3.3	4.3	4.3	3.7	3.5	3.5	3.7	*	*
Portsmouth	2.1	2.2	2.5	3.2	4.2	4.1	3.6	3.5	3.2	3.2	*	*
Rochester-Dover	2.8	2.4	2.7	3.3	4.6	4.4	3.5	3.5	3.2	3.4	*	*
Rhode Island												
Providence-Fall River-Warwick	4.6	4.2	4.1	4.6	5.4	5.6	5.4	5.3	5.4	5.2	*	*
Vermont												
Burlington-South Burlington	2.1	1.9	2.3	2.8	3.6	4.0	3.3	3.1	3.3	3.5	*	*

Historical Data: Real Estate (annual averages)

May/June 2008

	1998	1999	2000	2001	2002	2003	2004	2005	2006	2007	Annual Rate of Change	
	(index: Q1 1980=100, Q1 1995 = 100 for metro areas, not seasonally adjusted)										2006-2007	1998-2007
OFHEO Home Price Index												
United States												
New England	290.1	314.3	351.8	391.3	436.2	477.4	534.8	593.7	616.9	616.2	-0.1	8.8
Connecticut	237.7	249.9	268.8	293.0	321.1	348.2	390.2	439.1	467.6	475.8	1.7	8.1
Maine	248.0	262.4	283.7	312.2	343.1	374.8	421.8	470.9	497.3	512.3	3.0	8.4
Massachusetts	334.0	368.6	421.5	473.3	530.9	581.4	646.7	708.9	720.2	707.5	-1.8	8.8
New Hampshire	230.1	250.0	283.2	318.5	356.5	390.0	433.6	480.3	499.1	499.1	0.0	9.1
Rhode Island	248.4	258.4	285.1	317.9	366.9	420.6	498.5	567.2	596.1	588.6	-1.2	10.2
Vermont	229.5	238.9	256.3	276.5	297.4	318.8	361.7	413.2	452.1	470.1	4.0	8.3
Connecticut												
Bridgeport-Stamford-Norwalk	114.0	122.5	135.6	149.1	164.4	178.0	200.3	227.4	241.3	241.9	0.3	8.8
Hartford-West Hartford-East Hartford	107.0	111.6	119.0	128.5	139.3	149.9	166.4	184.7	195.7	200.9	2.6	7.3
New Haven-Milford	109.3	113.8	121.3	132.9	146.2	160.4	180.6	204.6	219.7	223.7	1.8	8.3
Norwich-New London	111.5	116.4	123.8	134.7	149.4	164.0	185.9	212.6	225.2	228.6	1.5	8.4
Maine												
Bangor	108.5	108.7	113.2	122.6	131.6	141.8	156.6	174.9	188.5	195.9	3.9	6.8
Lewiston-Auburn	109.9	113.1	116.7	128.2	138.7	150.4	168.5	190.1	203.0	209.1	3.0	7.5
Portland-South Portland-Biddeford	115.1	123.2	135.0	149.6	165.7	181.8	205.1	228.9	238.5	244.0	2.3	8.8
Massachusetts												
Barnstable Town	117.1	131.9	156.2	179.1	208.6	235.6	272.3	303.1	309.7	302.2	-2.4	11.3
Pittsfield	114.1	117.3	124.4	132.4	144.2	157.4	175.1	195.2	215.5	220.5	2.3	7.6
Springfield	109.3	112.8	118.9	128.4	140.7	154.0	174.3	197.0	207.7	212.7	2.4	7.7
Boston-Cambridge-Quincy Divisions												
Boston-Quincy	121.1	135.3	156.1	176.0	199.3	220.1	245.6	268.0	271.2	264.4	-2.5	9.2
Cambridge-Newton-Framingham	120.5	134.5	155.4	173.9	191.5	205.3	224.2	243.9	244.3	240.8	-1.4	8.1
Peabody	122.2	135.9	156.3	175.7	196.4	213.7	234.8	254.7	256.3	250.2	-2.4	8.4
Rockingham County-Strafford County	119.1	130.3	149.8	168.5	188.2	205.0	226.0	248.7	256.0	255.0	-0.4	8.9
Worcester	115.3	124.6	140.6	158.2	178.4	196.3	218.6	239.8	244.8	238.7	-2.5	8.5
New Hampshire												
Manchester-Nashua	117.3	127.7	144.4	163.6	184.1	201.2	223.2	246.2	253.6	251.4	-0.9	8.9
Rhode Island												
Providence-New Bedford-Fall River	109.8	115.7	128.3	143.6	165.2	188.5	220.8	249.0	259.3	255.3	-1.5	10.0
Vermont												
Burlington-South Burlington	107.8	112.7	122.7	132.6	142.8	152.0	172.0	196.2	212.5	219.4	3.3	8.3

27

<http://www.bos.frb.org/economic/nee/nee1.htm>

Historical Data: Real Estate (con't) (annual averages)

	1998	1999	2000	2001	2002	2003	2004	2005	2006	2007	Annual Rate of Change	
											2006-2007	1998-2007
Total Housing Permits Authorized (seasonally adjusted)												
United States	134,917	138,500	133,333	136,583	145,833	157,417	171,500	180,167	153,833	115,917	-24.6	-1.0
New England	3,992	3,949	3,646	3,577	3,942	4,037	4,674	4,727	4,007	3,020	-24.6	-2.3
Connecticut	1,055	918	783	790	809	838	988	953	784	620	-20.9	-5.0
Maine	448	475	480	481	577	582	715	723	603	481	-20.2	1.7
Massachusetts	1,597	1,587	1,445	1,392	1,426	1,535	1,757	1,926	1,704	1,233	-27.6	-2.0
New Hampshire	479	490	528	513	668	641	721	636	489	367	-24.9	-1.6
Rhode Island	221	271	221	200	218	207	209	247	189	157	-17.2	-2.6
Vermont	193	208	189	202	245	234	285	243	239	163	-31.9	-0.5

Single-Unit Housing Permits Authorized (seasonally adjusted)

United States	99,500	104,000	100,083	102,750	111,250	121,833	133,667	140,417	114,917	80,750	-29.7	-1.3
New England	3,368	3,355	3,115	3,012	3,258	3,097	3,487	3,403	2,866	2,167	-24.4	-4.2
Connecticut	801	791	679	663	721	663	763	704	592	446	-24.6	-5.6
Maine	411	436	438	443	506	531	653	649	549	424	-22.7	1.2
Massachusetts	1,364	1,286	1,152	1,078	1,113	1,037	1,145	1,168	971	728	-25.1	-6.2
New Hampshire	421	445	487	468	543	499	545	521	422	314	-25.5	-2.3
Rhode Island	208	221	189	183	184	164	162	150	135	121	-11.0	-5.7
Vermont	164	176	170	176	190	202	220	209	197	135	-31.8	-1.3

Total Construction Contract Values (index: 1980=100, not seasonally adjusted)

United States	273.4	302.2	319.3	334.9	340.1	358.8	399.6	452.2	463.8	423.9	-8.6	5.2
New England	316.3	325.7	403.1	352.1	369.2	352.0	390.9	441.6	407.5	429.8	5.5	4.0
Connecticut	258.4	316.5	358.5	297.9	330.6	334.0	348.2	404.3	503.1	415.8	-17.4	6.5
Maine	322.0	308.7	319.5	311.3	343.5	391.1	418.9	462.0	442.3	430.7	-2.6	3.5
Massachusetts	351.8	332.8	443.9	381.2	364.3	335.2	371.8	414.1	332.2	420.5	26.6	3.4
New Hampshire	373.0	359.4	536.4	450.5	515.6	464.0	549.2	576.1	475.9	500.3	5.1	5.0
Rhode Island	248.0	336.4	333.9	338.7	407.9	356.8	407.7	568.1	445.1	526.2	18.2	10.5
Vermont	237.6	260.2	238.6	270.7	374.9	338.3	464.9	493.7	418.4	350.9	-16.1	6.2

Residential Construction Contract Values (index: 1980=100, seasonally adjusted)

United States	280.6	303.8	324.3	341.5	387.8	441.9	518.3	597.2	531.9	408.5	-23.2	5.1
New England	289.9	264.9	287.8	307.4	350.9	379.2	474.1	483.1	410.6	379.7	-7.5	3.7
Connecticut	281.1	276.4	292.9	294.9	354.0	366.9	457.8	465.0	431.1	380.7	-11.7	4.0
Maine	282.9	271.8	351.5	350.4	440.1	492.3	617.1	636.1	534.5	428.2	-19.9	6.1
Massachusetts	307.3	252.5	262.7	292.5	304.7	339.0	441.5	443.8	356.8	367.6	3.0	3.0
New Hampshire	306.9	326.1	404.8	411.8	537.1	522.3	609.2	597.3	475.5	397.5	-16.4	4.2
Rhode Island	275.2	313.0	291.8	321.4	330.6	436.9	440.0	510.9	517.9	540.9	4.5	8.3
Vermont	181.5	168.8	178.3	228.3	287.1	296.9	391.9	428.3	377.6	236.0	-37.5	5.3

	1998	1999	2000	2001	2002	2003	2004	2005	2006	2007	Annual Rate of Change	
											2006-2007	1998-2007
Nonresidential Construction Contract Values (index: 1980=100, not seasonally adjusted)												
United States	293.4	322.3	330.3	321.9	295.4	297.0	312.5	347.1	412.4	439.2	6.5	4.9
New England	361.0	428.0	526.1	442.6	418.0	393.7	395.3	449.6	484.4	505.7	4.4	4.5
Connecticut	276.8	375.1	473.2	301.3	337.2	383.4	320.6	377.9	643.2	369.1	-42.6	8.9
Maine	230.8	289.0	316.4	304.9	281.5	307.5	275.5	331.2	366.2	424.5	15.9	7.7
Massachusetts	437.1	461.5	626.9	534.8	449.9	404.9	416.0	454.5	371.6	538.2	44.8	4.4
New Hampshire	494.3	519.7	594.4	649.6	630.2	511.5	594.7	677.5	564.4	701.0	24.2	5.0
Rhode Island	238.3	559.5	340.8	510.3	455.0	319.1	499.9	645.5	697.9	977.0	40.0	26.5
Vermont	383.9	487.3	351.8	328.1	685.1	486.8	629.3	677.7	481.9	425.9	-11.6	7.6

Nonbuilding Construction Contract Values (index: 1980=100, not seasonally adjusted)												
United States	221.5	260.1	284.5	334.8	311.9	287.1	295.8	322.8	399.9	416.8	4.2	7.8
New England	289.9	271.8	417.0	287.8	317.1	223.2	222.0	322.7	284.0	335.4	18.1	5.3
Connecticut	167.0	272.2	231.4	300.1	269.2	148.0	170.6	319.8	358.4	601.0	67.7	22.8
Maine	562.3	410.7	264.3	249.1	272.7	344.9	306.3	357.3	413.7	445.4	7.7	-0.4
Massachusetts	297.1	278.5	489.1	307.8	328.8	213.1	181.2	272.9	220.4	329.3	49.4	7.7
New Hampshire	368.0	231.5	759.1	274.5	321.4	252.3	341.2	364.3	361.9	465.8	28.7	21.4
Rhode Island	228.3	143.8	387.0	196.7	455.9	303.0	286.0	550.7	133.0	110.8	-16.7	19.5
Vermont	197.5	211.4	239.7	270.9	251.8	237.7	410.7	346.6	496.7	499.1	0.5	13.5

Existing-Home Sales (thousands of units, seasonally adjusted)												
United States	4,963	5,172	5,188	5,327	5,657	6,176	6,722	7,064	6,510	5,672	*	*
New England	267.8	270.7	259.3	261.5	261.8	265.8	307.4	NA	NA	NA	*	*
Connecticut	61.6	63.6	62.1	65.7	63.2	63.7	74.6	81.0	71.4	63.3	*	*
Maine	25.0	26.6	27.2	27.7	28.5	30.7	33.3	33.3	31.5	26.6	*	*
Massachusetts	125.7	122.7	112.4	111.5	117.3	116.0	139.6	147.9	129.4	125.3	*	*
New Hampshire	26.6	27.6	28.4	26.9	22.6	24.2	26.8	NA	NA	NA	*	*
Rhode Island	16.8	18.1	17.1	18.1	17.2	16.8	19.0	19.8	18.5	16.6	*	*
Vermont	12.1	12.1	12.1	11.6	13.0	14.4	14.1	16.4	14.7	14.2	*	*

Median Sales Price of Existing Homes (single-family homes, dollars, not seasonally adjusted)												
United States	134,975	140,275	146,000	154,500	166,225	178,300	192,800	217,475	221,875	215,525	*	*
Connecticut												
Bridgeport-Stamford-Norwalk	NA	NA	NA	NA	376,250	417,950	437,425	472,050	473,525	484,375	*	*
Hartford-West Hartford-East Hartford	145,300	153,250	163,325	167,050	180,500	206,300	229,875	252,500	257,275	262,625	*	*
New Haven-Milford	137,025	144,550	150,600	167,075	191,425	223,875	249,225	273,700	286,325	284,975	*	*
Norwich-New London	NA	NA	NA	NA	173,950	201,800	228,925	253,250	263,075	275,500	*	*
Maine												
Portland-South Portland-Biddeford	NA	NA	135,400	152,450	172,075	193,050	224,800	244,500	243,875	241,925	*	*
Massachusetts												
Barnstable Town	NA	NA	NA	NA	277,425	328,500	375,550	397,775	388,525	384,925	*	*
Boston-Cambridge-Quincy	NA	240,925	276,050	288,425	331,925	356,300	387,275	410,775	403,275	399,025	*	*
Pittsfield	NA	NA	NA	NA	147,575	162,575	193,525	207,825	213,200	214,900	*	*
Springfield	115,375	119,525	124,975	132,400	146,100	160,700	179,500	200,650	208,275	211,325	*	*
Worcester	138,600	NA	134,967	153,000	223,600	250,850	274,025	289,425	281,125	272,875	*	*
Rhode Island												
Providence-Fall River-New Bedford	131,025	135,950	145,200	165,275	202,075	241,050	274,575	292,400	291,450	285,300	*	*

Historical Data: Hours, Earnings, and Income (annual averages)

	1998	1999	2000	2001	2002	2003	2004	2005	2006	2007	Annual Rate of Change	
	Weekly Hours, Manufacturing Production Workers (not seasonally adjusted)										2006-2007	1998-2007
United States	41.4	41.4	41.3	40.3	40.5	40.4	40.8	40.7	41.1	41.2	0.3	*
New England	NA	NA	NA	40.5	40.6	40.6	40.9	41.1	41.0	41.0	0.0	*
Connecticut	NA	NA	NA	41.7	41.6	41.5	41.8	42.2	42.2	42.3	0.4	*
Maine	NA	NA	NA	39.8	39.9	40.1	39.6	39.6	41.4	41.9	1.2	*
Massachusetts	NA	NA	NA	40.3	40.8	40.6	41.1	41.5	40.7	40.7	-0.1	*
New Hampshire	NA	NA	NA	40.6	39.8	40.0	40.0	41.1	41.2	40.3	-2.2	*
Rhode Island	NA	NA	NA	39.4	38.7	39.2	39.2	38.4	38.9	39.2	0.7	*
Vermont	NA	NA	NA	39.7	40.0	40.0	40.2	39.2	39.6	39.4	-0.6	*

Hourly Earnings, Manufacturing Production Workers (dollars, not seasonally adjusted)

United States	13.45	13.85	14.32	14.76	15.29	15.74	16.14	16.56	16.81	17.26	2.7	*
New England	NA	NA	NA	15.34	15.87	16.27	16.72	17.31	18.03	18.85	4.6	*
Connecticut	NA	NA	NA	16.42	17.24	17.75	18.35	18.96	19.78	20.62	4.3	*
Maine	NA	NA	NA	14.72	15.55	16.28	16.96	17.27	18.56	19.19	3.4	*
Massachusetts	NA	NA	NA	15.76	16.25	16.54	16.88	17.66	18.26	19.26	5.5	*
New Hampshire	NA	NA	NA	13.98	14.21	14.85	15.48	15.87	16.57	17.10	3.2	*
Rhode Island	NA	NA	NA	12.68	12.75	12.88	13.03	13.12	13.42	13.78	2.7	*
Vermont	NA	NA	NA	14.18	14.34	14.54	14.60	15.06	15.79	16.49	4.4	*

Total Personal Income (millions of dollars, seasonally adjusted)

United States	7,418,497	7,779,521	8,422,074	8,716,992	8,872,871	9,150,320	9,719,723	10,284,378	10,968,393	11,645,882	6.2	5.2
New England	437,134	459,781	503,961	524,402	528,030	538,413	569,563	595,815	631,192	669,670	6.1	4.9
Connecticut	124,880	130,579	141,570	147,356	146,998	148,777	159,102	166,987	177,453	189,535	6.8	4.8
Maine	29,469	30,680	33,173	35,107	35,999	37,533	39,394	40,634	42,202	44,418	5.3	4.7
Massachusetts	205,177	217,066	240,209	249,095	249,954	253,994	267,467	280,502	297,906	316,568	6.3	5.0
New Hampshire	35,198	37,121	41,429	42,624	43,393	44,327	47,206	48,980	52,149	54,622	4.7	5.0
Rhode Island	27,673	28,761	30,697	32,478	33,636	35,072	36,752	38,388	39,835	41,745	4.8	4.7
Vermont	14,738	15,575	16,883	17,742	18,051	18,711	19,641	20,324	21,647	22,782	5.2	5.0

Wage and Salary Disbursements (millions of dollars, seasonally adjusted)

United States	4,189,579	4,468,315	4,825,906	4,939,944	4,976,522	5,107,298	5,386,149	5,661,021	6,015,158	6,358,737	5.7	4.8
New England	248,473	266,892	293,889	300,698	298,534	304,757	321,384	332,679	350,408	371,566	6.0	4.6
Connecticut	69,198	73,255	78,950	81,132	80,316	81,879	86,623	90,536	95,192	102,041	7.2	4.4
Maine	15,243	16,251	17,195	17,983	18,552	19,277	20,220	20,609	21,434	22,471	4.8	4.4
Massachusetts	123,408	134,271	150,843	153,131	150,107	151,955	160,141	165,051	174,363	185,264	6.3	4.7
New Hampshire	18,542	19,774	21,875	22,470	22,733	23,556	25,044	26,177	27,654	28,913	4.6	5.1
Rhode Island	14,260	15,021	16,062	16,577	17,201	18,141	18,894	19,491	20,449	21,101	3.2	4.5
Vermont	7,822	8,321	8,965	9,406	9,626	9,950	10,463	10,816	11,317	11,776	4.1	4.7

	1998	1999	2000	2001	2002	2003	2004	2005	2006	2007	Annual Rate of Change	
											2006-2007	1998-2007
Per Capita Income (dollars, not seasonally adjusted)												
United States	26,883	27,939	29,845	30,574	30,821	31,504	33,123	34,757	36,714	38,611	5.2	4.1
New England	31,677	33,126	36,117	37,323	37,364	37,950	40,058	41,909	44,327	46,948	5.9	4.5
Connecticut	36,822	38,332	41,492	42,964	42,585	42,839	45,762	47,943	50,762	54,117	6.6	4.4
Maine	23,596	24,484	25,973	27,323	27,816	28,795	30,169	30,952	32,095	33,722	5.1	4.1
Massachusetts	32,524	34,227	37,750	38,875	38,862	39,449	41,444	43,612	46,299	49,082	6.0	4.7
New Hampshire	29,147	30,380	33,399	33,900	34,109	34,554	36,460	37,557	39,753	41,512	4.4	4.0
Rhode Island	26,670	27,459	29,213	30,684	31,527	32,697	34,318	35,987	37,523	39,463	5.2	4.5
Vermont	24,629	25,881	27,681	28,979	29,339	30,321	31,959	32,833	34,871	36,670	5.2	4.5

Historical Data: Prices, Exports, Bankruptcies, and Economic Activity (annual averages)

	1998	1999	2000	2001	2002	2003	2004	2005	2006	2007	Annual Rate of Change	
	(index: 1982-84=100, except Recreation and Education & Communication, Dec 1997=100)										2006-2007	1998-2007
Consumer Price Index - United States	163.0	166.6	172.2	177.1	179.9	184.0	188.9	195.3	201.6	207.3	2.9	2.7
All Items	163.0	166.6	172.2	177.1	179.9	184.0	188.9	195.3	201.6	207.3	2.9	2.7
Food	160.7	164.1	167.8	173.1	176.2	180.0	186.2	190.7	195.2	202.9	4.0	2.6
Shelter	182.1	187.3	193.4	200.6	208.1	213.1	218.8	224.4	232.1	240.6	3.7	3.1
Fuel & Utilities	128.5	128.8	137.9	150.2	143.6	154.5	161.9	179.0	194.7	200.6	3.0	5.2
Transportation	141.6	144.4	153.3	154.3	152.9	157.6	163.1	173.9	180.9	184.7	2.1	3.0
Medical Care	242.1	250.6	260.8	272.8	285.6	297.1	310.1	323.2	336.2	351.1	4.4	4.2
Recreation	101.1	102.0	103.3	104.9	106.2	107.5	108.6	109.4	110.9	111.4	0.5	1.1
Education & Communication	100.3	101.2	102.5	105.2	107.9	109.8	111.6	113.7	116.8	119.6	2.4	2.0
All Items, Less Food & Energy	173.4	177.0	181.3	186.1	190.5	193.2	196.6	200.9	205.9	210.7	2.3	2.2

	1998	1999	2000	2001	2002	2003	2004	2005	2006	2007	Annual Rate of Change	
	(index: 1982-84=100, except Recreation and Education & Communication, Dec 1997=100)										2006-2007	1998-2007
Consumer Price Index - Boston	171.6	175.7	183.3	191.4	196.3	203.5	209.4	216.0	222.9	227.1	1.9	3.2
All Items	171.6	175.7	183.3	191.4	196.3	203.5	209.4	216.0	222.9	227.1	1.9	3.2
Food	166.1	170.8	175.1	182.2	185.5	189.2	195.5	200.7	206.4	213.6	3.5	2.8
Shelter	194.7	201.6	211.8	225.1	242.0	251.2	259.2	261.8	267.2	272.5	2.0	3.8
Fuel & Utilities	119.4	117.2	130.9	152.6	133.9	154.4	165.4	193.8	227.1	227.0	0.0	7.9
Transportation	139.7	141.9	152.0	152.4	149.7	154.0	159.1	171.2	174.6	175.3	0.4	2.6
Medical Care	313.1	329.3	347.9	367.5	382.8	397.1	415.7	436.8	456.4	480.9	5.4	4.9
Recreation	103.8	105.1	104.0	105.3	106.8	111.1	108.5	111.1	114.2	116.3	1.8	1.3
Education & Communication	100.3	101.4	102.7	107.0	106.8	110.2	114.9	117.4	119.7	121.5	1.4	2.2
All Items, Less Food & Energy	185.8	190.6	197.0	204.8	213.0	219.4	224.1	227.8	232.4	236.0	1.5	2.7

Total Exports (millions of dollars)

United States	170,119	173,205	195,105	182,757	173,315	180,936	204,484	226,095	259,286	290,677	12.1	6.4
New England	7,875	8,280	9,499	8,603	8,125	8,681	9,921	10,524	11,768	12,435	5.7	5.5
Connecticut	1,824	1,808	2,012	2,153	2,079	2,034	2,140	2,422	3,060	3,430	12.1	7.6
Maine	456	504	445	453	493	547	608	577	657	686	4.4	5.0
Massachusetts	3,970	4,201	5,129	4,373	4,177	4,666	5,460	5,511	6,012	6,321	5.1	5.8
New Hampshire	432	483	594	600	466	483	572	637	703	728	3.5	6.8
Rhode Island	276	279	296	317	280	295	322	317	383	412	7.4	4.9
Vermont	917	1,006	1,024	708	630	657	821	1,060	954	859	-10.0	0.9

Bankruptcies (consumer and business filings)

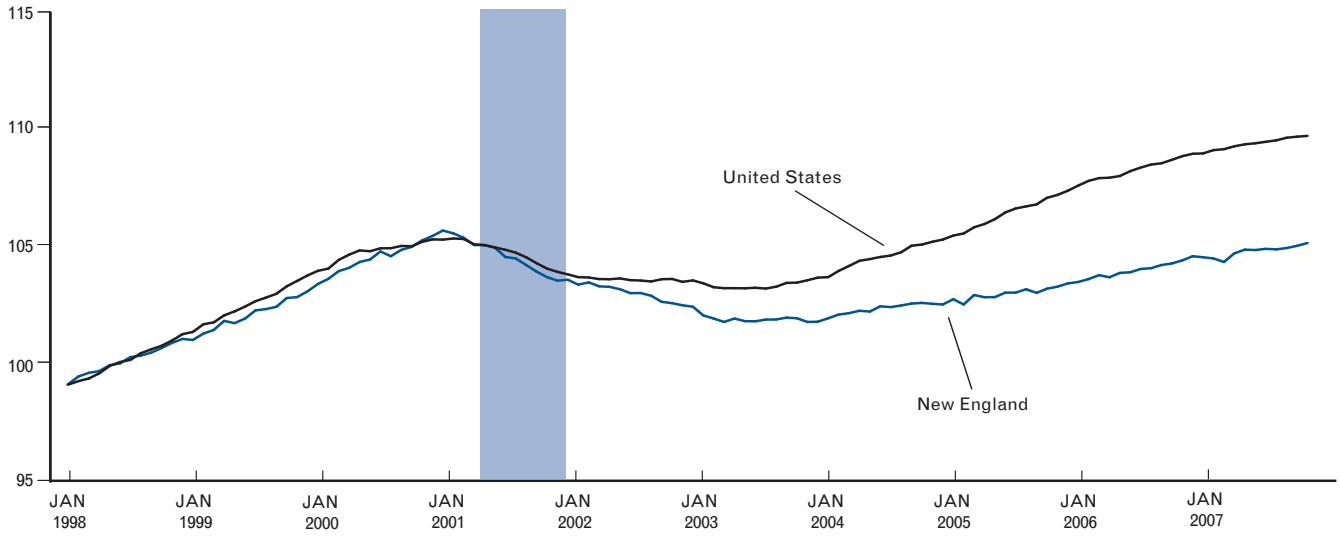
United States	360,473	329,731	313,238	372,931	394,033	414,891	399,197	519,479	155,337	212,353	*	*
New England	13,306	11,388	9,962	11,093	11,083	11,510	11,200	15,787	4,742	7,146	*	*
Connecticut	3,489	2,966	2,661	2,903	2,937	3,061	2,854	3,818	1,256	1,470	*	*
Maine	1,128	1,043	1,011	1,137	1,105	1,165	1,127	1,654	332	576	*	*
Massachusetts	5,580	4,649	3,900	4,413	4,349	4,564	4,602	6,677	2,102	3,427	*	*
New Hampshire	1,249	1,026	904	983	1,009	1,106	1,163	1,524	483	746	*	*
Rhode Island	1,369	1,265	1,114	1,221	1,227	1,139	1,031	1,460	406	704	*	*
Vermont	491	439	373	437	456	476	424	656	164	224	*	*

Economic Activity (index: July 1992=100, not seasonally adjusted)	1998	1999	2000	2001	2002	2003	2004	2005	2006	2007	Annual Rate of Change	
											2006-2007	1998-2007
United States	127.2	132.3	137.3	138.9	139.0	140.5	144.3	149.0	154.0	158.0	2.6	2.5
Connecticut	129.4	135.8	141.8	142.6	141.4	141.0	145.5	150.2	155.8	161.5	3.6	2.5
Maine	121.9	129.8	136.3	138.4	138.9	140.1	143.3	142.7	144.6	147.0	1.7	2.1
Massachusetts	139.9	147.1	156.5	158.6	154.6	153.7	157.7	162.2	166.7	172.7	3.6	2.4
New Hampshire	149.0	158.1	167.5	170.8	169.3	172.5	180.1	186.7	192.6	198.6	3.1	3.3
Rhode Island	127.8	134.3	141.6	144.2	147.1	152.5	157.3	159.6	163.4	165.4	1.2	2.9
Vermont	130.7	137.2	144.5	147.8	147.1	148.3	154.0	157.1	160.1	162.0	1.2	2.4

Total Nonagricultural Employment

Index: 1998 Average=100, Seasonally Adjusted

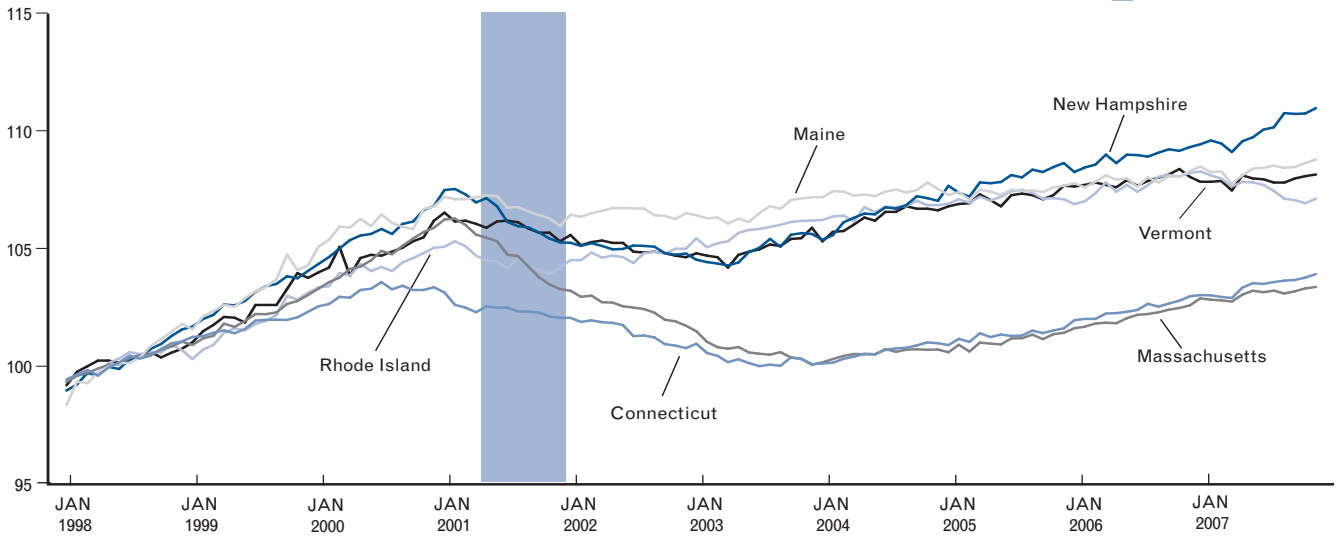
■ NBER-Dated Recession



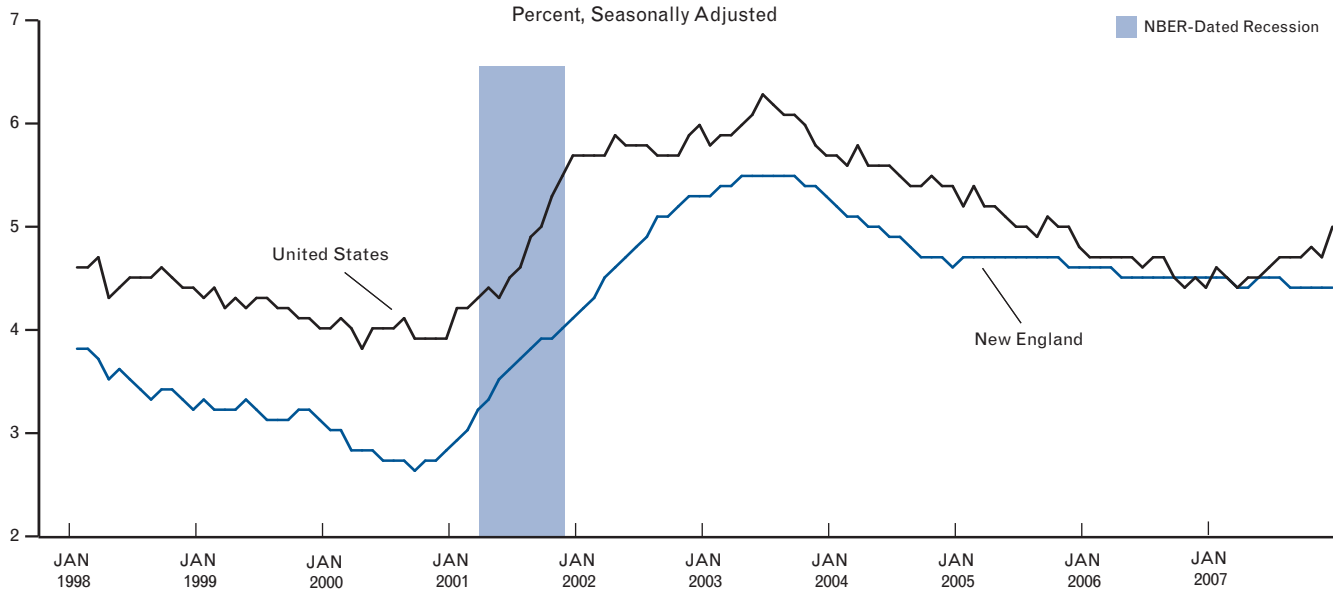
Total Nonagricultural Employment

Index: 1998 Average=100, Seasonally Adjusted

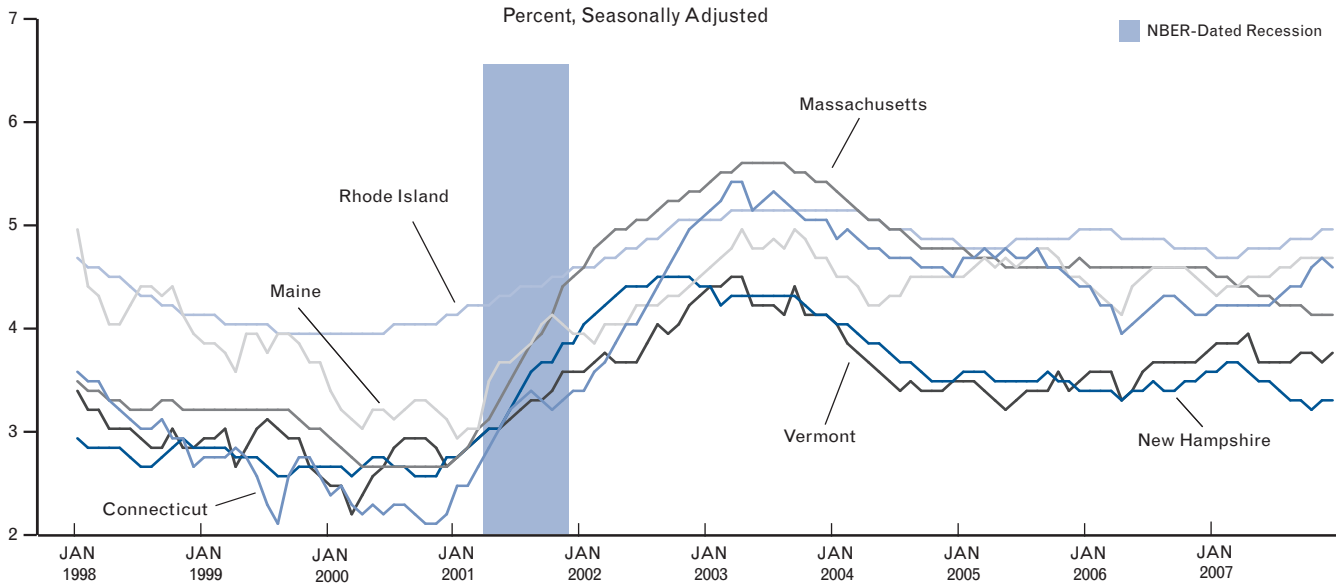
■ NBER-Dated Recession



Unemployment Rate



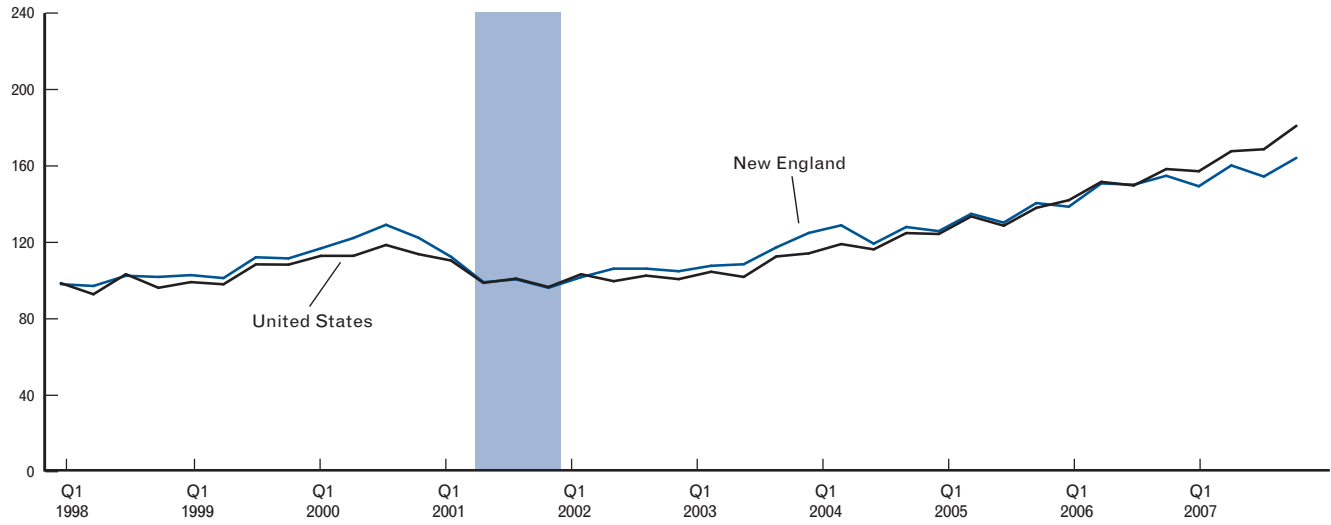
Unemployment Rate



Total Value of Exports

Index: Q1 1998=100, Not Seasonally Adjusted

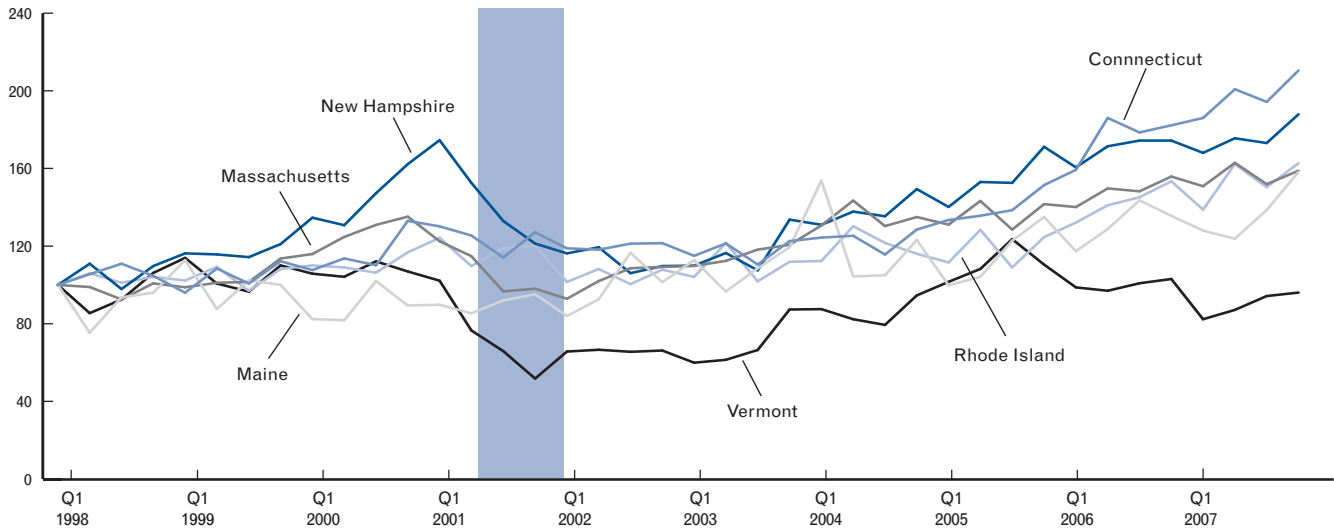
■ NBER-Dated Recession



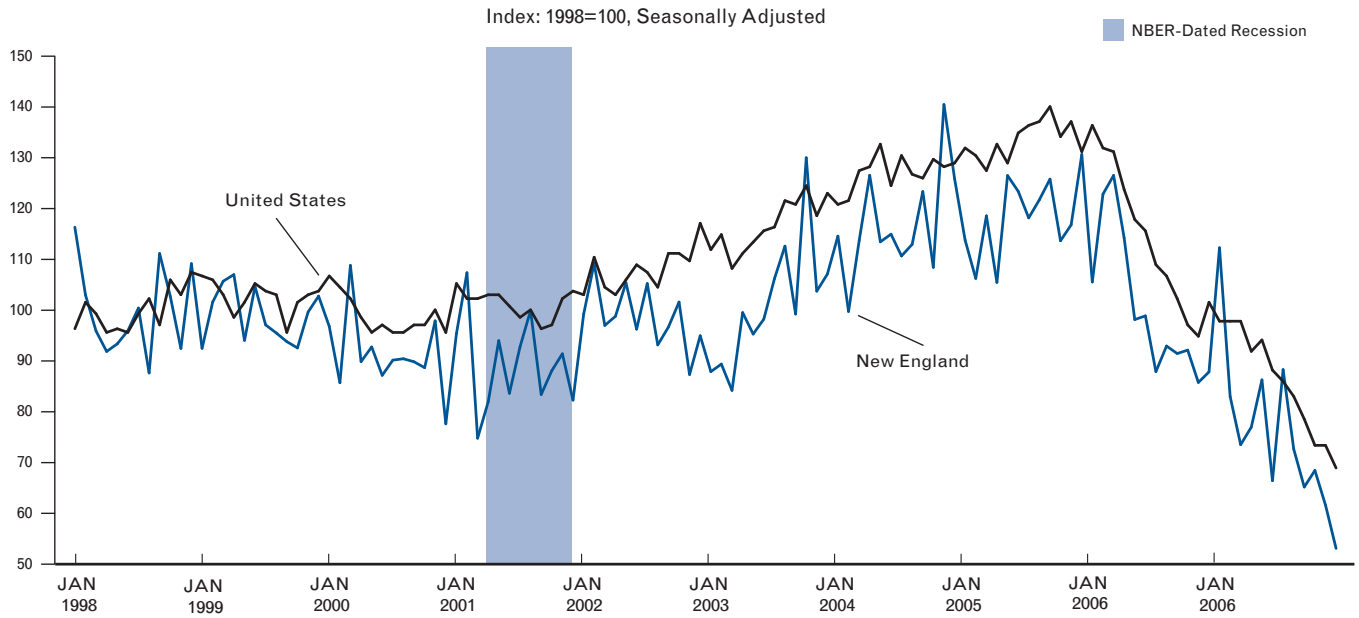
Total Value of Exports

Index: Q1 1998=100, Not Seasonally Adjusted

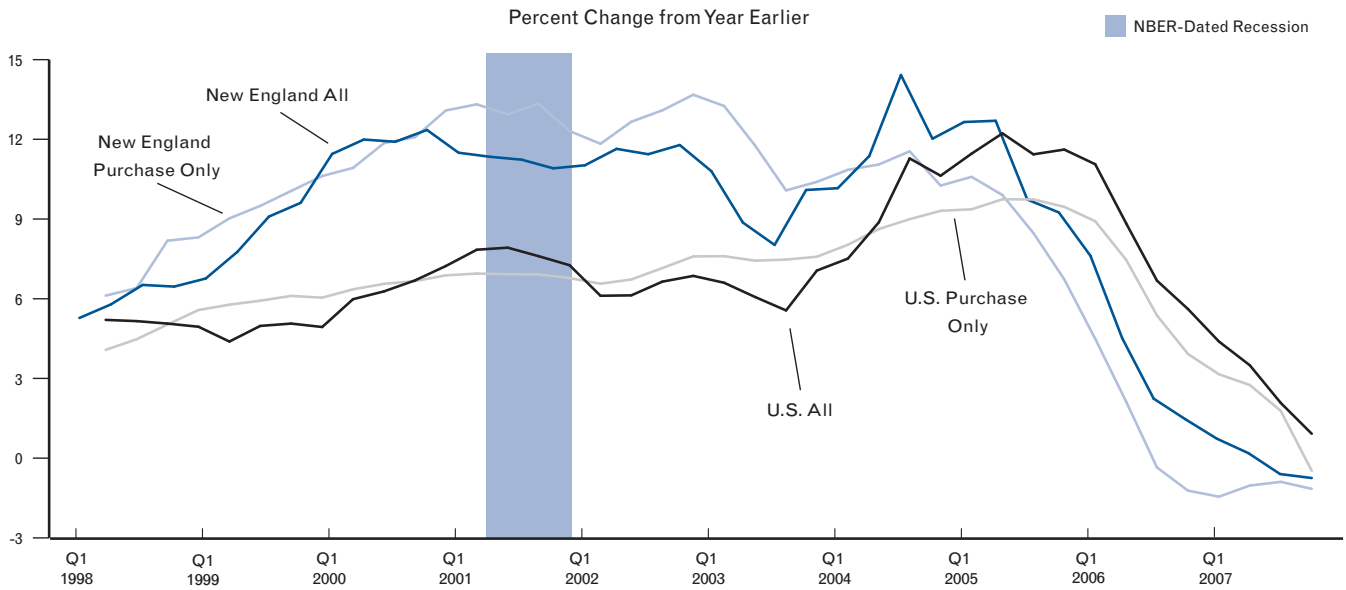
■ NBER-Dated Recession



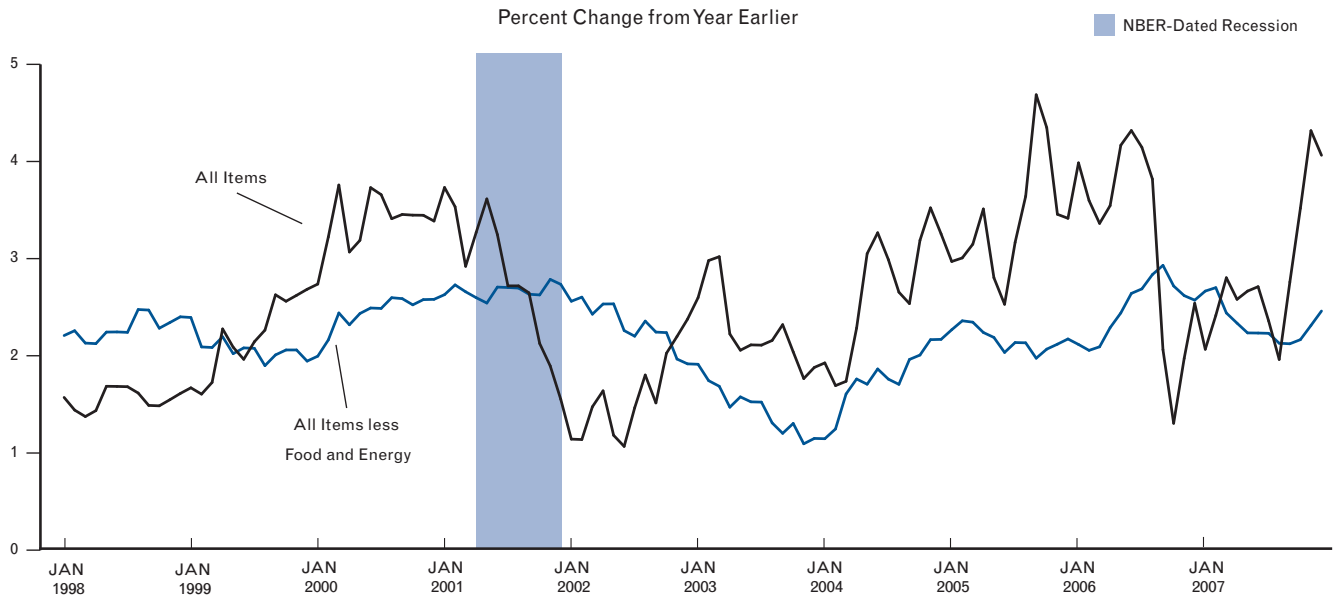
Total Housing Permits



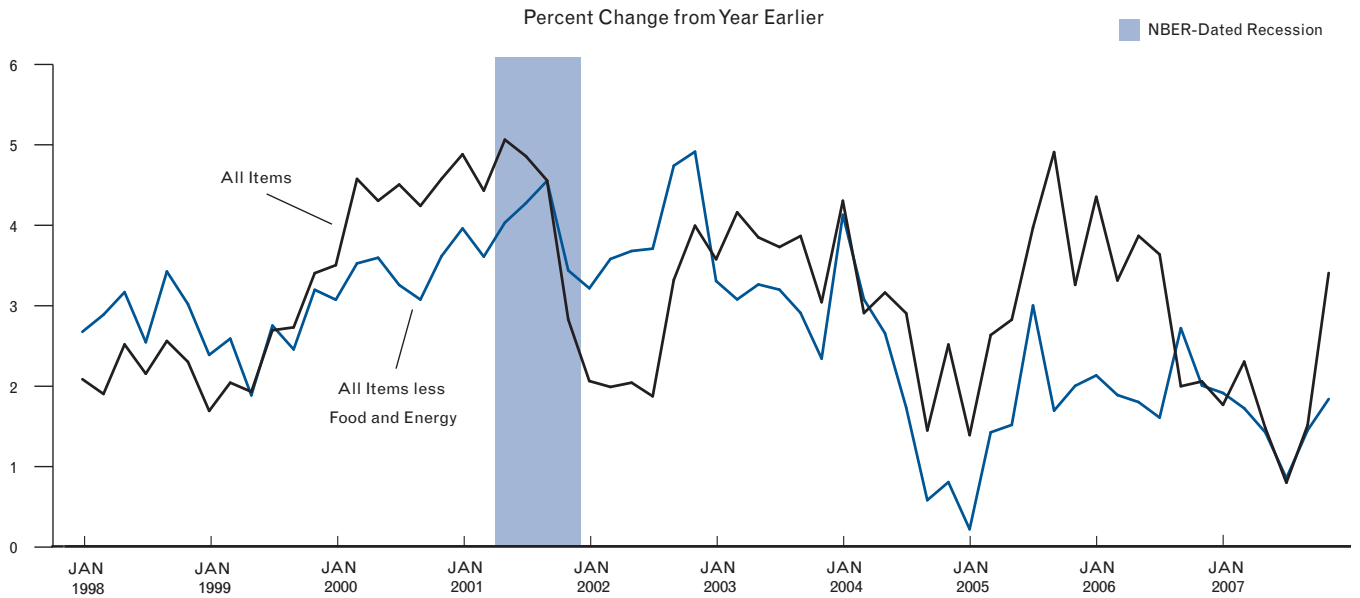
Home Price Index



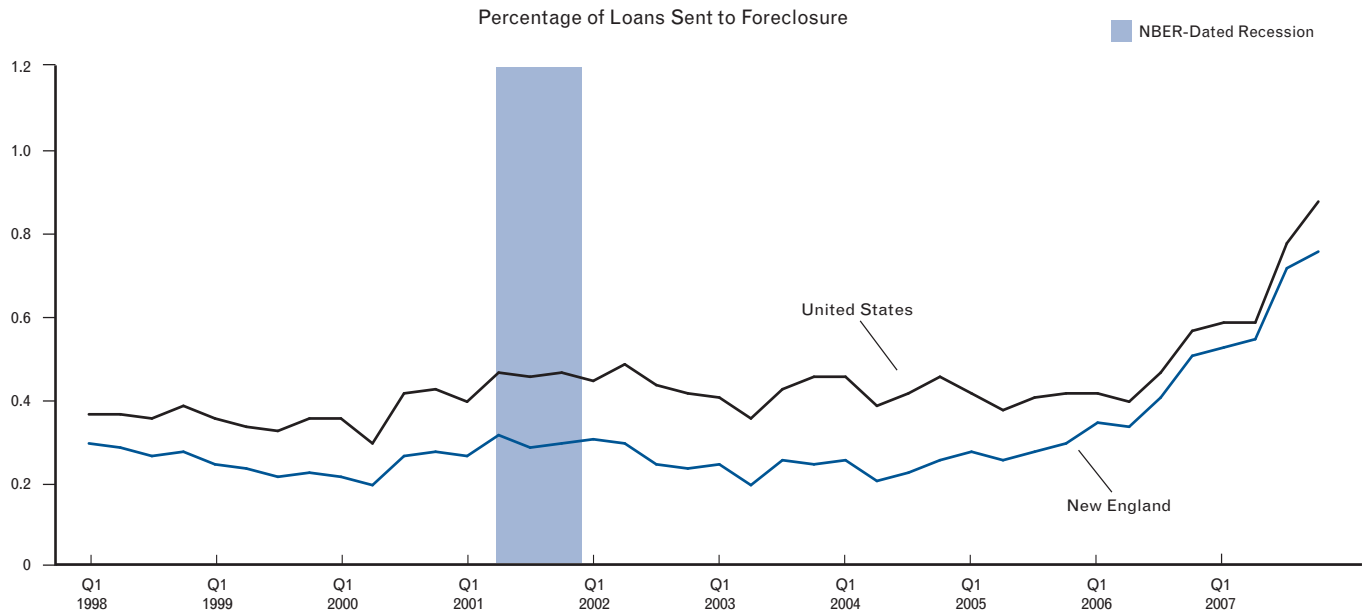
U.S. Consumer Price Index



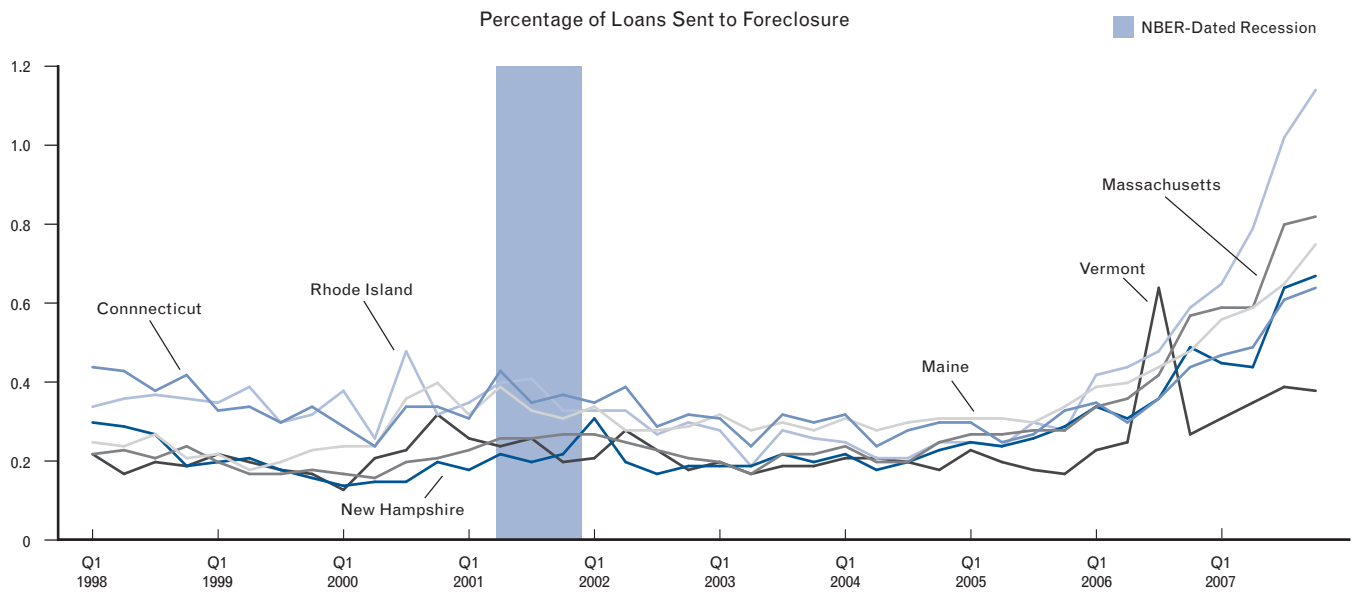
New England Consumer Price Index



Foreclosure Starts



Foreclosure Starts



Source: Mortgage Bankers Association/Haver Analytics