

## Historical Data: Nonagricultural Employment by Industry (thousands of jobs, annual averages)

	1999	2000	2001	2002	2003	2004	2005	2006	2007	2008	Annual Rate of Change	
											2007 to 2008	1999 to 2008
<b>Total Nonagricultural</b> (seasonally adjusted)												
United States	128,992	131,794	131,830	130,340	129,996	131,419	133,699	136,098	137,604	137,046	-0.4	0.7
New England	6,860.6	7,023.2	7,036.3	6,927.5	6,850.7	6,875.1	6,918.3	6,983.8	7,043.5	7,034.9	-0.1	0.3
Connecticut	1,669.1	1,693.2	1,681.1	1,664.9	1,644.5	1,649.8	1,662.0	1,680.6	1,698.1	1,699.7	0.1	0.2
Maine	586.3	603.5	608.2	606.4	606.7	611.7	611.7	614.7	617.8	615.8	-0.3	0.6
Massachusetts	3,242.6	3,329.0	3,339.3	3,259.1	3,198.3	3,194.9	3,211.7	3,245.5	3,280.5	3,285.6	0.2	0.2
New Hampshire	605.7	622.1	627.2	618.4	617.8	627.3	636.4	642.0	646.1	645.8	0.0	0.7
Rhode Island	465.4	476.8	478.4	479.4	484.2	488.5	491.0	493.3	492.7	481.8	-2.2	0.4
Vermont	291.6	298.7	302.1	299.3	299.2	302.9	305.5	307.7	308.4	306.2	-0.7	0.6

### Mining and Logging (not seasonally adjusted)

United States	598	599	606	583	572	591	628	684	724	774	6.9	3.0
New England	7.0	7.2	7.3	7.1	7.2	7.4	7.5	7.5	7.2	6.7	-6.7	-0.5
Connecticut	0.8	0.8	0.7	0.8	0.7	0.7	0.7	0.8	0.7	0.8	2.3	-0.1
Maine	2.7	2.7	2.7	2.6	2.5	2.6	2.7	2.7	2.7	2.5	-5.6	-0.6
Massachusetts	1.4	1.4	1.5	1.6	1.8	1.9	2.0	1.8	1.6	1.4	-14.3	0.3
New Hampshire	1.0	1.1	1.0	0.9	0.9	1.0	1.0	1.1	1.1	1.0	-8.1	0.6
Rhode Island	0.2	0.2	0.2	0.2	0.2	0.2	0.3	0.3	0.3	0.2	-18.8	1.3
Vermont	1.1	1.1	1.1	1.0	0.9	0.9	0.8	0.9	0.8	0.9	2.0	-2.1

### Construction (seasonally adjusted)

United States	6,545	6,788	6,827	6,715	6,736	6,973	7,333	7,693	7,632	7,213	-5.5	1.1
New England	263.9	280.9	295.5	295.7	294.2	301.8	304.2	309.1	303.6	288.2	-5.1	1.0
Connecticut	60.9	64.6	65.4	63.4	61.9	65.7	66.0	67.1	68.6	65.2	-4.9	0.8
Maine	27.8	29.2	29.8	29.4	30.5	30.8	30.7	31.3	30.9	29.3	-5.2	0.6
Massachusetts	118.8	129.1	139.0	140.7	136.7	138.4	139.6	141.1	137.7	132.1	-4.0	1.3
New Hampshire	24.2	25.0	27.2	27.9	28.9	29.3	29.4	29.4	27.4	25.7	-6.2	0.8
Rhode Island	17.8	18.2	19.0	19.5	20.7	21.0	21.8	22.8	22.2	20.5	-7.8	1.7
Vermont	14.5	14.9	15.2	14.8	15.4	16.7	16.8	17.4	16.8	15.4	-8.4	0.8

### Manufacturing (seasonally adjusted)

United States	17,323	17,265	16,440	15,257	14,508	14,315	14,226	14,159	13,880	13,423	-3.3	-2.8
New England	939.8	938.4	900.7	815.8	765.0	747.1	733.8	720.4	709.3	691.2	-2.6	-3.3
Connecticut	240.3	235.7	226.7	211.2	200.0	197.2	195.2	193.5	190.8	187.4	-1.7	-2.7
Maine	80.5	79.5	74.6	68.0	64.1	63.0	61.4	60.0	59.4	58.9	-0.9	-3.4
Massachusetts	400.3	403.2	388.6	348.8	324.3	312.9	305.3	299.7	294.9	286.4	-2.9	-3.6
New Hampshire	101.3	102.5	97.4	85.0	80.4	80.1	80.2	78.3	77.6	75.7	-2.5	-3.1
Rhode Island	72.2	71.2	67.8	62.3	58.7	57.0	54.9	52.7	50.8	48.0	-5.4	-4.4
Vermont	45.3	46.3	45.6	40.5	37.5	37.0	36.8	36.2	35.9	34.8	-3.1	-2.8

## Annual Rate of Change

	1999	2000	2001	2002	2003	2004	2005	2006	2007	2008	2007 to 2008	1999 to 2008
--	------	------	------	------	------	------	------	------	------	------	-----------------	-----------------

**Trade, Transportation, and Utilities** (seasonally adjusted)

United States	25,770	26,225	25,986	25,500	25,287	25,536	25,963	26,277	26,627	26,381	-0.9	0.3
New England	1,285.4	1,311.7	1,303.4	1,289.9	1,280.0	1,284.1	1,286.0	1,288.0	1,289.2	1,279.0	-0.8	-0.1
Connecticut	312.1	317.5	312.2	309.2	305.5	307.9	310.6	311.0	311.7	310.0	-0.6	-0.1
Maine	119.5	122.7	123.7	123.3	123.2	125.2	125.2	125.7	126.1	124.5	-1.3	0.5
Massachusetts	588.0	596.8	592.3	579.9	573.9	572.2	570.1	570.5	570.9	568.4	-0.5	-0.4
New Hampshire	133.6	137.1	137.3	138.2	138.4	139.6	140.7	141.6	141.4	140.1	-0.9	0.5
Rhode Island	75.6	79.6	79.3	80.5	80.8	80.2	80.1	79.7	79.8	77.3	-3.1	0.3
Vermont	56.6	58.0	58.6	58.8	58.3	59.0	59.4	59.5	59.3	58.8	-0.9	0.4

**Retail Trade** (seasonally adjusted)

United States	14,971	15,279	15,240	15,027	14,918	15,061	15,283	15,356	15,518	15,355	-1.1	0.3
New England	814.5	830.4	824.4	824.6	817.8	822.8	822.0	817.5	815.1	807.2	-1.0	-0.1
Connecticut	194.7	197.5	194.5	194.3	191.3	192.0	192.0	191.3	191.1	188.0	-1.6	-0.4
Maine	81.2	84.0	84.6	84.5	84.0	85.4	85.2	85.5	85.9	85.4	-0.6	0.6
Massachusetts	358.3	362.8	358.7	356.9	353.9	355.4	354.4	350.5	348.8	347.4	-0.4	-0.3
New Hampshire	92.4	94.6	94.9	95.8	95.9	97.0	97.5	98.0	97.7	97.1	-0.6	0.6
Rhode Island	49.4	52.1	51.7	53.1	53.2	53.0	52.4	51.8	51.5	49.4	-4.0	0.0
Vermont	38.5	39.5	39.9	40.0	39.5	40.1	40.5	40.5	40.2	39.8	-0.9	0.4

**Wholesale Trade** (not seasonally adjusted)

United States	5,893	5,933	5,773	5,652	5,607	5,663	5,764	5,905	6,015	5,964	-0.9	0.1
New England	273.6	279.4	282.4	275.8	275.0	274.6	276.1	281.5	283.1	281.8	-0.5	0.3
Connecticut	66.1	68.2	67.4	66.0	65.5	65.8	66.5	67.5	68.3	69.4	1.6	0.6
Maine	19.4	19.5	20.2	20.4	21.1	21.4	21.4	21.5	21.1	20.7	-2.0	0.8
Massachusetts	138.6	139.5	141.5	136.3	135.1	133.7	133.8	137.1	137.9	136.6	-0.9	-0.1
New Hampshire	24.5	25.8	26.7	26.6	26.7	27.2	27.5	28.0	28.3	28.0	-0.9	1.5
Rhode Island	15.7	16.6	16.5	16.5	16.4	16.4	16.8	17.0	17.2	16.9	-1.6	0.9
Vermont	9.4	9.8	10.1	10.1	10.3	10.2	10.1	10.4	10.4	10.3	-1.2	1.0

**Information** (not seasonally adjusted)

United States	3,419	3,630	3,629	3,395	3,188	3,118	3,061	3,038	3,032	2,997	-1.2	-1.4
New England	187.0	201.4	200.0	182.9	171.9	167.3	165.9	165.5	167.1	166.4	-0.4	-1.2
Connecticut	44.7	46.4	44.7	41.0	39.6	39.0	38.1	37.9	38.4	37.6	-2.1	-1.8
Maine	11.7	12.1	12.2	11.6	11.4	11.2	11.2	11.2	11.2	10.8	-3.6	-0.8
Massachusetts	100.3	111.1	111.4	99.6	91.3	87.4	86.9	86.9	88.5	89.1	0.6	-1.1
New Hampshire	13.1	14.0	13.7	12.9	12.2	12.6	12.7	12.5	12.4	12.5	1.1	-0.4
Rhode Island	10.6	10.9	11.3	11.2	11.0	10.8	10.8	11.0	10.6	10.6	0.3	0.1
Vermont	6.7	6.8	6.8	6.7	6.5	6.4	6.2	6.0	5.9	5.8	-2.5	-1.7

## Annual Rate of Change

	1999	2000	2001	2002	2003	2004	2005	2006	2007	2008	2007 to 2008	1999 to 2008
<b>Financial Activities</b> (seasonally adjusted)												
United States	7,646	7,688	7,809	7,848	7,976	8,031	8,153	8,329	8,302	8,144	-1.9	0.7
New England	NA	NA	489.8	488.5	485.3	480.0	484.7	489.5	488.7	479.9	-1.8	-0.3
Connecticut	140.8	143.0	142.9	142.6	142.7	140.7	142.3	144.3	144.6	143.3	-0.9	0.2
Maine	32.8	34.1	35.1	35.1	35.1	34.9	34.2	33.6	33.2	32.6	-1.8	0.0
Massachusetts	226.8	228.0	230.6	228.1	223.7	219.8	221.4	223.9	224.5	219.7	-2.1	-0.3
New Hampshire	34.2	34.1	35.7	36.6	37.0	37.4	39.4	39.3	38.4	38.0	-1.1	1.2
Rhode Island	29.9	31.1	32.2	32.9	33.7	34.0	34.3	35.1	34.9	33.5	-4.0	1.3
Vermont	NA	NA	13.2	13.2	13.2	13.3	13.2	13.2	13.2	12.9	-2.3	-0.4

**Professional and Business Services** (seasonally adjusted)

United States	15,955	16,672	16,480	15,975	15,985	16,388	16,949	17,573	17,948	17,779	-0.9	1.2
New England	847.5	890.8	875.1	830.4	812.7	829.8	847.2	868.5	886.7	891.5	0.5	0.6
Connecticut	211.5	215.9	209.9	202.0	196.8	197.1	199.9	204.3	206.5	205.4	-0.5	-0.3
Maine	48.3	51.9	51.8	51.4	50.3	49.6	50.3	52.0	53.9	55.9	3.8	1.7
Massachusetts	462.1	492.8	485.2	453.5	440.6	451.0	460.8	471.7	482.4	486.3	0.8	0.6
New Hampshire	55.5	58.6	56.9	54.3	54.7	57.3	59.2	61.8	65.5	66.7	1.8	2.1
Rhode Island	49.5	50.9	50.5	48.9	50.0	53.5	55.1	56.5	56.0	54.6	-2.5	1.1
Vermont	20.6	20.7	20.7	20.2	20.4	21.3	21.9	22.2	22.4	22.6	0.9	1.1

**Education and Health Services** (seasonally adjusted)

United States	14,795	15,109	15,643	16,201	16,588	16,950	17,370	17,824	18,320	18,855	2.9	2.7
New England	1,082.8	1,101.5	1,130.0	1,163.0	1,182.9	1,202.8	1,222.9	1,252.1	1,287.8	1,317.9	2.3	2.2
Connecticut	242.4	245.3	252.6	259.7	264.0	268.7	273.3	279.6	287.8	296.2	2.9	2.3
Maine	94.2	97.5	100.8	104.9	107.3	110.9	112.2	114.1	116.1	117.6	1.3	2.5
Massachusetts	538.2	545.5	554.9	568.4	575.5	582.2	590.2	605.6	624.5	640.0	2.5	1.9
New Hampshire	81.5	84.0	89.0	91.8	93.0	95.0	97.8	100.3	102.9	105.4	2.4	2.9
Rhode Island	82.3	83.3	84.9	88.0	91.0	92.9	95.3	97.1	99.2	99.9	0.7	2.2
Vermont	44.3	46.0	47.9	50.1	52.2	53.1	54.2	55.4	57.3	58.8	2.5	3.2

**Leisure and Hospitality** (seasonally adjusted)

United States	11,544	11,860	12,032	11,986	12,175	12,492	12,814	13,109	13,427	13,457	0.2	1.7
New England	577.9	589.0	594.6	606.7	614.4	623.9	627.9	636.4	646.9	649.9	0.5	1.3
Connecticut	119.7	121.1	119.5	122.8	125.1	127.6	129.5	132.6	135.7	138.1	1.7	1.6
Maine	54.2	55.9	56.4	57.3	58.4	58.8	59.2	59.8	60.3	59.7	-0.9	1.1
Massachusetts	270.5	274.6	279.4	284.8	287.6	290.8	292.6	296.6	302.6	305.0	0.8	1.3
New Hampshire	56.9	58.3	59.5	60.8	61.5	63.7	63.3	63.9	64.0	63.7	-0.5	1.3
Rhode Island	44.1	46.3	46.8	48.0	49.0	49.8	50.2	50.2	51.4	50.9	-1.1	1.6
Vermont	32.5	32.9	32.9	33.0	32.7	33.1	33.2	33.3	32.9	32.5	-1.1	0.0

	1999	2000	2001	2002	2003	2004	2005	2006	2007	2008	Annual Rate of Change	
											2007 to 2008	1999 to 2008
<b>Other Services</b> (seasonally adjusted)												
United States	5,087	5,168	5,258	5,372	5,401	5,409	5,395	5,438	5,493	5,528	0.6	0.9
New England	NA	NA	251.9	253.8	253.4	253.9	255.2	256.8	259.5	258.2	-0.5	0.4
Connecticut	60.7	61.0	62.1	62.8	62.2	62.5	62.8	63.7	64.1	63.4	-1.1	0.5
Maine	18.0	18.3	19.1	19.8	20.3	20.1	20.0	19.7	19.9	19.9	0.0	1.1
Massachusetts	108.0	111.1	116.1	117.5	117.1	116.8	117.9	118.9	120.4	120.2	-0.2	1.2
New Hampshire	23.1	24.0	23.6	21.6	20.7	21.0	21.3	21.5	22.0	22.1	0.3	-0.4
Rhode Island	19.9	20.8	21.2	22.0	23.0	23.3	23.3	23.0	23.2	22.8	-1.6	1.5
Vermont	NA	NA	10.0	10.1	10.2	10.1	10.0	9.9	10.0	9.8	-1.3	-0.2

**Government** (seasonally adjusted)

United States	20,312	20,790	21,120	21,509	21,580	21,618	21,810	21,974	22,220	22,496	1.2	1.1
New England	952.7	974.2	988.0	993.8	983.9	977.1	983.0	990.1	997.7	1,006.1	0.8	0.6
Connecticut	235.2	241.9	244.4	249.3	246.0	242.8	243.8	245.9	249.2	252.4	1.3	0.8
Maine	96.7	99.6	102.0	103.1	103.7	104.7	104.8	104.4	104.2	104.1	-0.1	0.8
Massachusetts	428.3	435.4	440.3	436.2	425.9	421.5	425.0	429.0	432.7	437.1	1.0	0.2
New Hampshire	81.5	83.5	85.8	88.3	90.1	90.2	91.5	92.2	93.3	95.0	1.8	1.7
Rhode Island	63.4	64.4	65.2	66.1	66.2	65.5	64.9	65.0	64.4	63.4	-1.5	0.0
Vermont	47.6	49.4	50.2	50.9	52.0	52.3	53.0	53.7	53.9	54.1	0.3	1.4

## Historical Data: Unemployment (seasonally adjusted, annual averages)

	1999	2000	2001	2002	2003	2004	2005	2006	2007	2008	Annual Rate of Change	
											2007 to 2008	1999 to 2008
<b>Unemployment Rate</b> (percent)												
United States	4.2	4.0	4.7	5.8	6.0	5.5	5.1	4.6	4.6	5.8	*	*
New England	3.2	2.8	3.6	4.8	5.4	4.9	4.7	4.5	4.4	5.4	*	*
Connecticut	2.7	2.3	3.1	4.4	5.5	4.9	4.9	4.4	4.6	5.7	*	*
Maine	4.0	3.3	3.8	4.4	5.0	4.6	4.8	4.6	4.6	5.4	*	*
Massachusetts	3.3	2.8	3.7	5.3	5.8	5.2	4.8	4.8	4.5	5.3	*	*
New Hampshire	2.8	2.7	3.4	4.6	4.5	3.9	3.6	3.5	3.5	3.8	*	*
Rhode Island	4.2	4.2	4.5	5.1	5.4	5.2	5.1	5.1	5.2	7.8	*	*
Vermont	3.0	2.7	3.3	4.0	4.5	3.7	3.5	3.7	4.0	4.8	*	*

### Civilian Labor Force (thousands)

United States	139,380	142,586	143,769	144,856	146,500	147,380	149,292	151,413	153,126	154,329	0.8	1.1
New England	7,326.9	7,348.3	7,423.8	7,495.6	7,507.8	7,476.0	7,514.5	7,598.2	7,633.2	7,668.9	0.5	0.5
Connecticut	1,742.2	1,736.8	1,754.9	1,779.0	1,795.0	1,792.1	1,808.8	1,829.0	1,850.3	1,876.1	1.4	0.8
Maine	667.7	672.5	676.0	680.6	684.7	685.5	694.3	701.5	702.6	706.8	0.6	0.6
Massachusetts	3,355.3	3,365.6	3,401.4	3,424.4	3,406.7	3,380.7	3,376.6	3,408.0	3,415.6	3,424.0	0.2	0.2
New Hampshire	684.9	694.3	704.9	712.2	711.1	715.6	723.4	732.8	738.2	738.9	0.1	0.8
Rhode Island	541.4	543.4	545.5	553.8	563.6	555.1	562.4	571.5	572.5	567.6	-0.9	0.5
Vermont	335.4	335.8	341.2	345.6	346.8	347.1	349.1	355.5	354.0	355.4	0.4	0.6

### Number Unemployed (thousands)

United States	5,879	5,685	6,830	8,375	8,770	8,140	7,578	6,992	7,077	8,961	26.6	5.6
New England	234.1	203.9	266.2	363.0	407.5	366.4	352.7	343.5	340.0	414.8	22.0	7.9
Connecticut	46.2	39.2	54.8	78.0	98.1	88.2	88.4	80.7	84.5	106.9	26.5	11.7
Maine	26.3	22.1	25.3	29.6	34.2	31.7	33.7	32.4	32.6	38.1	16.9	4.9
Massachusetts	109.6	92.3	126.0	181.0	197.6	176.9	163.5	162.6	153.0	180.2	17.8	7.4
New Hampshire	18.8	18.7	24.2	32.4	31.7	27.7	26.3	25.7	26.0	28.2	8.7	5.6
Rhode Island	22.6	22.7	24.8	28.1	30.3	29.1	28.5	28.8	29.9	44.4	48.4	8.7
Vermont	9.8	9.1	11.1	13.9	15.5	12.9	12.3	13.3	14.1	16.9	20.3	7.1

### Average Weekly Claims for Unemployment Insurance

United States	296,508	299,358	406,100	404,067	401,792	342,425	330,925	312,992	322,000	421,733	31.0	5.1
New England	15,046	14,335	20,607	21,615	20,535	17,433	16,866	16,430	16,976	20,354	19.9	4.6
Connecticut	3,879	3,519	5,255	5,496	5,051	4,352	4,289	4,182	4,270	5,207	21.9	4.8
Maine	1,421	1,413	1,602	1,567	1,480	1,447	1,351	1,341	1,360	1,829	34.5	3.5
Massachusetts	6,642	6,489	9,669	10,552	10,049	8,208	7,848	7,570	7,826	9,046	15.6	4.9
New Hampshire	611	559	1,244	1,220	1,111	984	948	957	1,012	1,323	30.8	14.0
Rhode Island	1,823	1,696	1,938	1,821	1,764	1,641	1,564	1,541	1,653	1,914	15.8	0.9
Vermont	670	659	899	960	1,080	800	867	838	855	1,036	21.1	6.3

## Historical Data: New England City and Town Areas (NECTAs) (seasonally adjusted, annual averages)

	1999	2000	2001	2002	2003	2004	2005	2006	2007	2008	Annual Rate of Change	
											2007 to 2008	1999 to 2008
<b>Total Nonagricultural Employment</b> (thousands of jobs)												
<b>Connecticut</b>												
Bridgeport-Stamford-Norwalk	420.7	426.4	422.2	414.4	410.4	410.0	411.2	416.3	419.8	417.5	-0.5	-0.1
Danbury	69.2	70.1	69.2	69.3	68.4	68.4	69.0	69.2	70.0	69.6	-0.5	0.1
Hartford-West Hartford-East Hartford	550.9	556.7	553.8	544.6	535.4	537.5	543.9	550.3	556.2	558.5	0.4	0.2
New Haven	272.8	274.5	273.5	274.5	270.0	271.8	273.4	276.2	277.7	277.2	-0.2	0.2
Norwich-New London	127.5	128.1	130.8	133.9	134.0	134.0	135.8	135.8	136.3	136.5	0.2	0.8
Waterbury	71.5	71.4	69.7	69.0	68.5	68.7	68.7	68.6	68.2	66.8	-2.1	-0.7
<b>Maine</b>												
Bangor	60.2	62.2	63.3	63.6	64.3	64.9	65.6	65.9	66.1	66.1	0.1	1.0
Portland-South Portland-Biddeford	177.0	182.7	185.8	186.4	189.1	192.2	192.7	193.9	195.6	194.8	-0.4	1.1
<b>Massachusetts</b>												
Barnstable Town	92.2	95.2	96.8	98.3	100.0	101.1	100.8	101.0	100.8	100.4	-0.4	1.0
Boston-Cambridge-Quincy	2,473.4	2,538.6	2,534.9	2,465.6	2,410.2	2,404.6	2,424.1	2,451.4	2,484.7	2,494.3	0.4	0.1
Boston-Cambridge-Quincy Division	1,708.3	1,748.7	1,745.6	1,694.1	1,648.8	1,640.6	1,649.4	1,673.8	1,703.6	1,715.9	0.7	0.1
Brockton-Bridgewater-Easton	90.0	91.5	90.9	90.0	88.3	88.9	88.8	89.7	89.9	88.6	-1.4	-0.2
Framingham	146.7	153.7	156.5	151.9	148.4	150.7	154.0	155.1	157.9	159.7	1.2	1.0
Haverhill-North Andover-Amesbury	80.4	81.6	81.3	77.8	75.7	75.6	76.9	78.1	78.3	77.7	-0.8	-0.4
Lowell-Billerica-Chelmsford	117.1	123.1	124.2	120.8	118.0	117.2	117.8	118.6	119.4	118.7	-0.6	0.2
Peabody	102.0	102.7	103.9	103.5	102.1	101.4	101.7	101.9	101.1	100.9	-0.3	-0.1
Nashua	122.3	125.3	126.2	122.9	126.3	129.4	132.6	132.6	132.8	132.4	-0.3	0.9
New Bedford	66.8	67.9	66.8	66.6	64.1	64.7	65.6	66.8	66.7	65.8	-1.3	-0.1
Springfield	295.7	301.7	303.0	299.0	294.6	295.2	296.3	297.7	298.0	297.1	-0.3	0.1
Worcester	241.3	245.1	245.8	243.7	243.1	244.0	244.3	247.4	248.5	247.2	-0.5	0.3
<b>New Hampshire</b>												
Manchester	93.4	95.2	96.4	95.8	97.3	99.0	98.9	99.5	100.6	101.2	0.6	0.9
Portsmouth	48.2	50.7	51.6	52.1	53.0	54.4	55.0	55.3	55.6	55.2	-0.7	1.5
Rochester-Dover	50.8	51.5	51.6	51.9	53.4	54.3	54.8	55.7	56.6	58.4	3.1	1.6
<b>Vermont</b>												
Burlington-South Burlington	108.3	113.0	113.6	111.9	111.5	112.9	113.1	113.6	114.3	113.5	-0.6	0.5

## Historical Data: NECTAs, continued (seasonally adjusted, annual averages)

	1999	2000	2001	2002	2003	2004	2005	2006	2007	2008	Annual Rate of Change	
											2007 to 2008	1999 to 2008
<b>Unemployment Rate</b> (percent)												
<b>Connecticut</b>												
Bridgeport-Stamford-Norwalk	2.5	2.0	3.1	4.3	5.1	4.5	4.5	4.0	4.1	4.5	*	*
Danbury	2.1	1.7	2.5	3.4	4.2	3.8	3.8	3.4	3.6	4.0	*	*
Hartford-West Hartford-East Hartford	2.8	2.3	3.2	4.5	5.7	5.1	5.1	4.5	4.7	5.1	*	*
New Haven	2.6	2.3	3.1	4.3	5.4	4.9	5.0	4.6	4.8	5.1	*	*
Norwich-New London	2.8	2.4	2.9	4.0	4.8	4.5	4.5	4.2	4.3	4.8	*	*
Waterbury	3.3	2.8	4.4	6.0	7.2	6.3	6.3	5.6	5.9	6.7	*	*
<b>Maine</b>												
Bangor	3.5	3.3	3.7	4.1	4.6	4.7	4.6	4.6	4.8	4.6	*	*
Lewiston-Auburn	3.8	3.2	3.9	4.4	5.0	4.4	4.9	4.7	4.7	4.7	*	*
Portland-South Portland-Biddeford	2.3	2.4	2.8	3.3	3.6	3.4	3.7	3.5	3.6	3.7	*	*
<b>Massachusetts</b>												
Barnstable Town	3.9	3.1	3.7	4.6	5.1	4.8	4.7	4.8	4.6	4.8	*	*
Boston-Cambridge-Quincy	3.0	2.5	3.6	5.3	5.7	5.0	4.5	4.5	4.1	4.1	*	*
Boston-Cambridge-Quincy Division	2.7	2.4	3.4	5.0	5.4	4.7	4.4	4.3	3.9	4.0	*	*
Brockton-Bridgewater-Easton	3.6	2.8	3.8	5.3	6.0	5.7	5.3	5.3	5.1	5.3	*	*
Framingham	2.6	2.2	3.2	4.9	5.2	4.3	3.9	3.9	3.5	3.6	*	*
Haverhill-North Andover-Amesbury	3.5	2.7	4.0	5.8	5.9	5.3	4.7	4.5	4.3	4.3	*	*
Lawrence-Methuen-Salem	6.1	4.4	6.6	9.4	9.5	8.5	7.6	7.2	6.7	6.7	*	*
Lowell-Billerica-Chelmsford	3.4	2.7	4.2	6.4	6.7	5.7	5.2	4.9	4.6	4.6	*	*
Peabody	3.2	2.6	3.7	5.3	6.0	5.5	5.1	5.0	4.5	4.6	*	*
Taunton-Norton-Raynham	3.4	2.7	3.6	5.0	5.5	5.2	4.9	5.0	4.7	5.0	*	*
Nashua	3.1	2.7	3.9	5.4	5.2	4.3	3.9	3.7	3.6	3.5	*	*
Leominster-Fitchburg-Gardner	4.2	3.2	4.5	6.5	7.1	6.5	6.4	6.1	5.7	5.8	*	*
New Bedford	6.1	4.4	5.4	6.9	7.7	7.0	6.8	6.6	6.4	6.7	*	*
Pittsfield	4.1	3.0	3.6	4.6	5.1	4.7	4.4	4.3	4.3	4.3	*	*
Springfield	3.6	2.9	3.8	5.2	6.0	5.6	5.3	5.3	5.1	5.2	*	*
Worcester	3.2	2.7	3.8	5.4	6.0	5.4	5.1	5.0	4.8	4.9	*	*
<b>New Hampshire</b>												
Manchester	2.4	2.5	3.3	4.3	4.3	3.7	3.5	3.6	3.5	3.5	*	*
Portsmouth	2.2	2.5	3.2	4.2	4.2	3.6	3.5	3.3	3.2	3.2	*	*
Rochester-Dover	2.4	2.7	3.3	4.6	4.4	3.5	3.6	3.3	3.4	3.5	*	*
<b>Rhode Island</b>												
Providence-Fall River-Warwick	4.2	4.1	4.6	5.4	5.6	5.4	5.3	5.3	5.3	6.2	*	*
<b>Vermont</b>												
Burlington-South Burlington	1.9	2.3	2.8	3.6	4.0	3.3	3.2	3.4	3.4	3.6	*	*

## Historical Data: Real Estate (annual averages)

	1999	2000	2001	2002	2003	2004	2005	2006	2007	2008	Annual Rate of Change	
											2007 to 2008	1999 to 2008
<b>FHFA Home Price Index</b> (index: Q1 1980=100, Q1 1995=100 for metro areas, not seasonally adjusted)												
United States	220.2	234.6	252.6	268.9	285.9	313.1	349.0	375.2	383.4	373.9	-2.5	6.1
New England	314.4	351.9	391.4	436.4	477.6	534.7	592.9	613.3	608.9	591.6	-2.9	7.4
Connecticut	250.7	269.7	293.9	322.1	349.3	391.5	439.9	466.9	472.5	460.2	-2.6	7.1
Maine	262.0	283.4	311.8	342.7	374.2	421.3	469.3	493.3	505.2	506.3	0.2	7.7
Massachusetts	368.7	421.6	473.3	530.9	581.5	646.5	707.8	715.9	698.8	675.1	-3.4	7.1
New Hampshire	249.9	283.1	318.4	356.4	389.9	433.3	479.5	496.6	493.1	478.2	-3.0	7.6
Rhode Island	258.5	285.1	317.9	366.9	420.6	498.4	566.7	593.3	582.2	546.6	-6.1	9.0
Vermont	238.9	256.2	276.4	297.3	318.8	361.4	412.2	448.7	464.0	468.2	0.9	7.8
Connecticut												
Bridgeport-Stamford-Norwalk	122.5	135.6	149.1	164.4	178.1	200.4	227.3	240.3	240.0	231.1	-3.7	7.5
Hartford-West Hartford-East Hartford	111.6	118.9	128.4	139.2	149.8	166.4	184.4	194.7	198.7	196.3	-1.2	6.5
New Haven-Milford	113.9	121.3	132.9	146.3	160.4	180.8	204.3	218.7	221.5	213.4	-3.6	7.4
Norwich-New London	116.3	123.7	134.7	149.3	163.9	185.7	212.1	224.0	225.8	221.2	-2.0	7.5
Maine												
Bangor	108.7	113.3	122.6	131.6	141.7	156.6	174.4	186.8	193.4	195.2	0.9	6.8
Lewiston-Auburn	113.3	117.0	128.5	139.0	150.7	168.7	190.4	202.4	206.5	206.6	0.0	7.0
Portland-South Portland-Biddeford	123.0	134.9	149.5	165.6	181.7	204.9	228.2	237.1	241.1	239.5	-0.7	7.8
Massachusetts												
Barnstable Town	132.0	156.2	179.2	208.7	235.7	272.4	302.8	307.8	298.9	286.4	-4.2	9.3
Pittsfield	117.1	124.0	132.2	144.2	157.4	175.1	195.2	213.5	218.5	218.3	-0.1	7.2
Springfield	112.8	118.9	128.3	140.7	154.0	174.2	196.7	206.4	210.1	205.2	-2.3	7.0
Divisions of Boston-Cambridge-Quincy												
Boston-Quincy	135.3	156.1	176.0	199.2	220.1	245.5	267.5	269.3	261.1	252.9	-3.2	7.4
Cambridge-Newton-Framingham	134.5	155.4	173.9	191.5	205.3	224.1	243.4	242.9	238.1	232.7	-2.3	6.4
Peabody	135.9	156.2	175.6	196.4	213.6	234.6	254.0	254.6	246.8	237.8	-3.7	6.6
Rockingham County-Strafford County	130.3	149.8	168.5	188.1	205.1	225.9	248.4	254.7	251.8	243.0	-3.5	7.4
Worcester	124.6	140.6	158.2	178.4	196.3	218.4	239.3	243.3	235.6	223.7	-5.0	6.9
New Hampshire												
Manchester-Nashua	127.7	144.3	163.4	183.9	200.9	222.8	245.3	252.1	247.9	238.3	-3.9	7.4
Rhode Island												
Providence-New Bedford-Fall River	115.6	128.2	143.4	165.0	188.3	220.5	248.5	257.8	252.1	237.1	-6.0	8.6
Vermont												
Burlington-South Burlington	112.7	122.8	132.7	142.8	152.1	172.0	196.1	211.2	216.7	217.7	0.5	7.7



## Historical Data: Real Estate, continued (seasonally adjusted, annual averages)

	1999	2000	2001	2002	2003	2004	2005	2006	2007	2008	Annual Rate of Change	
											2007 to 2008	1999 to 2008
<b>Total Housing Permits Authorized</b> (seasonally adjusted)												
United States	138,500	133,333	136,583	145,833	157,417	171,500	180,167	153,833	115,917	73,417	-36.7	-5.4
New England	3,948	3,646	3,577	3,942	4,037	4,676	4,729	4,017	3,040	2,003	-34.1	-5.9
Connecticut	918	783	790	809	838	988	954	784	622	448	-28.0	-6.6
Maine	475	480	481	577	583	716	725	606	483	294	-39.1	-3.3
Massachusetts	1,587	1,445	1,391	1,425	1,535	1,758	1,928	1,709	1,249	778	-37.7	-6.0
New Hampshire	490	527	513	668	642	721	637	489	364	270	-26.0	-4.8
Rhode Island	271	221	200	218	206	209	243	189	158	97	-39.0	-9.4
Vermont	208	189	202	245	234	285	243	239	163	117	-28.5	-4.5

### Single-Unit Housing Permits Authorized (seasonally adjusted)

United States	104,000	100,083	102,750	111,250	121,833	133,667	140,417	115,167	81,000	47,000	-42.0	-6.5
New England	3,355	3,115	3,012	3,258	3,097	3,488	3,405	2,868	2,166	1,297	-40.1	-8.6
Connecticut	791	679	663	721	663	763	704	590	444	265	-40.4	-10.0
Maine	436	439	443	506	532	653	651	551	425	244	-42.6	-4.2
Massachusetts	1,286	1,151	1,078	1,113	1,037	1,145	1,168	972	729	431	-40.9	-10.1
New Hampshire	445	487	468	543	499	546	523	423	314	191	-39.0	-7.3
Rhode Island	221	188	184	185	164	162	150	136	120	74	-38.5	-10.7
Vermont	176	170	176	190	202	220	209	197	135	94	-30.5	-5.5

### Total Construction Contract Values (index: 1980=100, not seasonally adjusted)

United States	302.2	319.3	334.9	340.1	358.8	399.6	452.1	465.3	431.6	373.6	-13.4	2.7
New England	325.7	403.1	352.1	369.2	352.0	390.9	440.2	405.6	429.9	365.1	-15.1	2.0
Connecticut	316.5	358.5	297.9	330.6	334.0	348.2	404.3	503.3	415.6	358.9	-13.6	2.5
Maine	308.7	319.5	311.3	343.5	391.1	418.9	462.0	443.2	433.6	398.2	-8.2	3.1
Massachusetts	332.8	443.9	381.2	364.3	335.2	371.8	414.1	331.8	418.4	355.6	-15.0	2.3
New Hampshire	359.4	536.4	450.5	515.6	464.0	549.2	576.1	474.3	509.7	371.5	-27.1	2.6
Rhode Island	336.4	333.9	338.7	407.9	356.8	407.7	568.1	415.1	526.5	459.9	-12.6	5.5
Vermont	260.2	238.6	270.7	374.9	338.3	464.9	462.0	418.4	354.1	298.0	-15.8	3.3

### Residential Construction Contract Values (index: 1980=100, seasonally adjusted)

United States	303.8	324.3	341.5	387.9	442.0	518.5	597.6	532.2	408.0	250.6	-38.6	-0.1
New England	264.9	287.8	307.3	350.8	379.3	473.8	483.0	406.1	375.0	239.5	-36.1	0.5
Connecticut	276.4	292.8	294.9	354.0	366.9	457.8	465.6	425.7	374.8	271.5	-27.6	1.0
Maine	271.8	351.6	350.4	440.1	492.2	617.0	636.6	536.6	428.3	263.8	-38.4	2.3
Massachusetts	252.6	262.8	292.5	304.5	339.3	441.4	443.0	356.8	364.6	209.9	-42.4	0.2
New Hampshire	326.1	404.8	411.7	537.0	522.0	608.1	596.9	471.3	395.6	276.5	-30.1	0.1
Rhode Island	313.0	291.6	321.1	330.5	437.0	438.9	512.0	456.1	512.7	275.5	-46.3	1.2
Vermont	168.8	178.3	228.2	286.9	296.2	390.5	429.0	379.7	231.0	222.8	-3.6	5.6

	1999	2000	2001	2002	2003	2004	2005	2006	2007	2008	2007 to 2008	1999 to 2008
--	------	------	------	------	------	------	------	------	------	------	-----------------	-----------------

**Nonresidential Construction Contract Values** (index: 1980=100, not seasonally adjusted)

United States	322.3	330.3	321.9	295.4	297.0	312.5	347.0	413.5	453.2	463.9	2.4	4.4
New England	428.0	526.1	442.6	418.0	393.7	395.3	445.7	484.6	508.7	486.5	-4.4	2.0
Connecticut	375.1	473.2	301.3	337.2	383.4	320.6	377.9	647.6	370.6	380.9	2.8	5.4
Maine	289.0	316.4	304.9	281.5	307.5	275.5	331.2	366.2	426.0	383.9	-9.9	3.8
Massachusetts	461.5	626.9	534.8	449.9	404.9	416.0	454.5	371.6	538.2	511.9	-4.9	3.2
New Hampshire	519.7	594.4	649.6	630.2	511.5	594.7	677.5	556.9	734.1	594.2	-19.1	3.0
Rhode Island	559.5	340.8	510.3	455.0	319.1	499.9	645.5	685.2	969.3	935.5	-3.5	11.1
Vermont	487.3	351.8	328.1	685.1	486.8	629.3	537.3	481.9	446.8	508.3	13.7	6.2

**Nonbuilding Construction Contract Values** (index: 1980=100, not seasonally adjusted)

United States	260.1	284.5	334.8	311.9	287.1	295.8	323.0	404.7	430.6	460.2	6.9	7.0
New England	271.8	417.0	287.8	317.1	223.2	222.0	322.7	284.7	337.2	417.3	23.8	8.7
Connecticut	272.2	231.4	300.1	269.2	148.0	170.6	319.8	358.4	601.5	512.8	-14.7	14.1
Maine	410.7	264.3	249.1	272.7	344.9	306.3	357.3	417.8	456.3	674.7	47.9	8.2
Massachusetts	278.5	489.1	307.8	328.8	213.1	181.2	272.9	220.4	330.8	389.8	17.9	10.5
New Hampshire	231.5	759.1	274.5	321.4	252.3	341.2	364.3	361.9	465.9	301.6	-35.3	21.6
Rhode Island	143.8	387.0	196.7	455.9	303.0	286.0	550.7	138.0	111.0	228.2	105.6	35.1
Vermont	211.4	239.7	270.9	251.8	237.7	410.7	346.6	496.7	499.1	295.2	-40.9	8.2

**Existing-Home Sales** (thousands of units, seasonally adjusted)

United States	5,172	5,188	5,327	5,657	6,176	6,722	7,064	6,510	5,672	4,894	*	*
New England	270.7	259.3	261.5	261.8	265.8	307.4	NA	NA	NA	214.8	*	*
Connecticut	63.6	62.1	65.7	63.2	63.7	74.6	81.0	71.4	63.3	47.1	*	*
Maine	26.6	27.2	27.7	28.5	30.7	33.3	33.3	31.5	26.6	20.6	*	*
Massachusetts	122.7	112.4	111.5	117.3	116.0	139.6	147.9	129.4	125.3	104.7	*	*
New Hampshire	27.6	28.4	26.9	22.6	24.2	26.8	NA	NA	NA	18.5	*	*
Rhode Island	18.1	17.1	18.1	17.2	16.8	19.0	19.8	18.5	16.6	13.1	*	*
Vermont	12.1	12.1	11.6	13.0	14.4	14.1	16.4	14.7	14.2	10.8	*	*

**Median Sales Price of Existing Homes** (single-family homes, dollars, not seasonally adjusted)

United States	140,275	146,000	154,500	166,225	178,300	192,800	217,475	221,875	215,525	195,775	*	*
Connecticut												
Bridgeport-Stamford-Norwalk	NA	NA	NA	376,250	417,950	437,425	472,050	473,525	484,375	435,350	*	*
Hartford-West Hartford-East Hartford	153,250	163,325	167,050	180,500	206,300	229,875	252,500	257,275	262,625	246,050	*	*
New Haven-Milford	144,550	150,600	167,075	191,425	223,875	249,225	273,700	286,325	284,975	262,325	*	*
Norwich-New London	NA	NA	151,225	173,950	201,800	228,925	253,250	263,075	275,500	236,225	*	*
Maine												
Portland-South Portland-Biddeford	NA	135,400	152,450	172,075	193,050	224,800	244,500	243,875	241,925	228,250	*	*
Massachusetts												
Barnstable Town	NA	NA	NA	277,425	328,500	375,550	397,775	388,525	384,925	342,200		
Boston-Cambridge-Quincy	240,925	276,050	288,425	331,925	356,300	387,275	410,775	403,275	398,325	358,625	*	*
Pittsfield	NA	NA	NA	147,575	162,575	193,525	207,825	213,200	214,900	212,800	*	*
Springfield	119,525	124,975	132,400	146,100	160,700	179,500	200,650	208,275	211,325	200,000	*	*
Worcester	NA	134,967	153,000	223,600	250,850	274,025	289,425	281,125	272,875	237,075	*	*
Rhode Island												
Providence-Fall River-New Bedford	135,950	145,200	165,275	202,075	241,050	274,575	292,400	291,450	285,300	251,025	*	*

## Historical Data: Hours, Earnings, and Income (annual average)

	1999	2000	2001	2002	2003	2004	2005	2006	2007	2008	Annual Rate of Change	
											2007 to 2008	1999 to 2008
<b>Weekly Hours, Manufacturing Production Workers</b> (not seasonally adjusted)												
United States	41.4	41.3	40.3	40.5	40.4	40.8	40.7	41.1	41.2	40.8	-1.0	*
New England	NA	NA	40.5	40.6	40.6	40.9	41.1	41.0	41.0	40.8	-0.6	*
Connecticut	NA	NA	41.7	41.6	41.5	41.8	42.2	42.2	42.3	42.4	0.0	*
Maine	NA	NA	39.8	39.9	40.1	39.6	39.6	41.4	41.9	41.4	-1.1	*
Massachusetts	NA	NA	40.3	40.8	40.6	41.1	41.5	40.7	40.7	40.6	0.0	*
New Hampshire	NA	NA	40.6	39.8	40.0	40.0	41.1	41.2	40.3	38.8	-3.7	*
Rhode Island	NA	NA	39.4	38.7	39.2	39.2	38.4	38.9	39.2	38.3	-2.2	*
Vermont	NA	NA	39.7	40.0	40.0	40.2	39.2	39.6	39.4	39.4	0.1	*

### Hourly Earnings, Manufacturing Productions Workers (dollars, not seasonally adjusted)

United States	13.85	14.32	14.76	15.29	15.74	16.14	16.55	16.81	17.26	17.76	2.9	*
New England	NA	NA	15.34	15.87	16.27	16.72	17.31	18.03	18.85	19.63	4.1	*
Connecticut	NA	NA	16.42	17.24	17.75	18.35	18.96	19.78	20.63	21.45	4.0	*
Maine	NA	NA	14.72	15.55	16.28	16.96	17.27	18.56	19.19	19.74	2.9	*
Massachusetts	NA	NA	15.76	16.25	16.54	16.88	17.66	18.26	19.26	20.36	5.7	*
New Hampshire	NA	NA	13.98	14.21	14.85	15.48	15.87	16.57	17.10	17.29	1.1	*
Rhode Island	NA	NA	12.68	12.75	12.88	13.03	13.12	13.42	13.78	13.94	1.1	*
Vermont	NA	NA	14.18	14.34	14.54	14.60	15.06	15.79	16.50	16.52	0.1	*

### Total Personal Income (millions of dollars, seasonally adjusted at annual rate)

United States	7,779,521	8,422,074	8,716,992	8,872,871	9,150,320	9,719,723	10,259,974	10,978,053	11,634,322	12,086,534	3.9	5.0
New England	459,781	503,961	524,402	528,030	538,413	569,563	593,818	634,406	673,338	696,792	3.5	4.8
Connecticut	130,579	141,570	147,356	146,998	148,777	159,102	167,272	179,974	191,877	196,939	2.6	4.7
Maine	30,680	33,173	35,107	35,999	37,533	39,394	40,448	42,404	44,711	46,578	4.2	4.8
Massachusetts	217,066	240,209	249,095	249,954	253,994	267,467	279,056	298,364	316,896	329,673	4.0	4.8
New Hampshire	37,121	41,429	42,624	43,393	44,327	47,206	48,774	51,965	54,641	56,356	3.1	4.8
Rhode Island	28,761	30,697	32,478	33,636	35,072	36,752	37,978	39,891	41,946	43,091	2.7	4.6
Vermont	15,575	16,883	17,742	18,051	18,711	19,641	20,290	21,810	23,267	24,155	3.8	5.0

### Wage and Salary Disbursements (millions of dollars, seasonally adjusted at annual rate)

United States	4,468,315	4,825,906	4,939,944	4,976,522	5,107,298	5,386,149	5,666,734	6,020,799	6,355,759	6,543,998	3.0	4.4
New England	266,892	293,889	300,698	298,534	304,757	321,384	332,931	350,680	371,255	382,375	3.0	4.1
Connecticut	73,255	78,950	81,132	80,316	81,879	86,623	90,628	95,301	101,512	103,438	1.9	3.9
Maine	16,251	17,195	17,983	18,552	19,277	20,220	20,573	21,410	22,362	23,156	3.6	4.0
Massachusetts	134,271	150,843	153,131	150,107	151,955	160,141	165,174	174,488	185,822	192,782	3.7	4.2
New Hampshire	19,774	21,875	22,470	22,733	23,556	25,044	26,218	27,685	28,743	29,575	2.9	4.6
Rhode Island	15,021	16,062	16,577	17,201	18,141	18,894	19,513	20,462	21,049	21,246	0.9	3.9
Vermont	8,321	8,965	9,406	9,626	9,950	10,463	10,826	11,334	11,767	12,176	3.5	4.3

	1999	2000	2001	2002	2003	2004	2005	2006	2007	2008	Annual Rate of Change	
											2007 to 2008	1999 to 2008
<b>Per Capita Income</b> (dollars, not seasonally adjusted)												
United States	27,939	29,847	30,582	30,838	31,530	33,157	34,690	36,794	38,615	39,751	2.9	4.0
New England	33,126	36,120	37,332	37,378	37,966	40,081	41,736	44,574	47,221	48,715	3.2	4.4
Connecticut	38,332	41,495	42,983	42,629	42,901	45,848	48,032	51,600	54,981	56,248	2.3	4.4
Maine	24,484	25,974	27,328	27,827	28,811	30,191	30,798	32,287	33,991	35,381	4.1	4.2
Massachusetts	34,227	37,753	38,877	38,855	39,431	41,420	43,315	46,305	48,995	50,735	3.6	4.5
New Hampshire	30,380	33,401	33,919	34,149	34,596	36,523	37,432	39,703	41,639	42,830	2.9	3.9
Rhode Island	27,459	29,215	30,696	31,555	32,737	34,375	35,575	37,669	39,829	41,008	3.0	4.6
Vermont	25,881	27,683	28,983	29,352	30,340	31,977	32,736	35,166	37,483	38,880	3.7	4.6

## Historical Data: Prices, Exports, Bankruptcies, and Economic Activity (not seasonally adjusted, annual averages)

Annual Rate of Change

	1999	2000	2001	2002	2003	2004	2005	2006	2007	2008	2007 to 2008	1999 to 2008
<b>Consumer Price Index - United States</b> (index: 1982-84=100, except Recreation & Communication: Dec. 1997=100, not seasonally adjusted)												
All Items	166.6	172.2	177.1	179.9	184.0	188.9	195.3	201.6	207.3	215.3	3.8	2.9
Food	164.1	167.8	173.1	176.2	180.0	186.2	190.7	195.2	202.9	214.1	5.5	3.0
Shelter	187.3	193.4	200.6	208.1	213.1	218.8	224.4	232.1	240.6	246.7	2.5	3.1
Fuel & Utilities	128.8	137.9	150.2	143.6	154.5	161.9	179.0	194.7	200.6	220.0	9.7	6.2
Transportation	144.4	153.3	154.3	152.9	157.6	163.1	173.9	180.9	184.7	195.5	5.9	3.5
Medical Care	250.6	260.8	272.8	285.6	297.1	310.1	323.2	336.2	351.1	364.1	3.7	4.2
Recreation	102.0	103.3	104.9	106.2	107.5	108.6	109.4	110.9	111.4	113.3	1.6	1.2
Education & Communication	101.2	102.5	105.2	107.9	109.8	111.6	113.7	116.8	119.6	123.6	3.4	2.3
All Items, Less Food & Energy	177.0	181.3	186.1	190.5	193.2	196.6	200.9	205.9	210.7	215.6	2.3	2.2

### Consumer Price Index - Boston

(index: 1982-84=100, except Recreation & Communication: Dec. 1997=100, not seasonally adjusted)

	1999	2000	2001	2002	2003	2004	2005	2006	2007	2008	2007 to 2008	1999 to 2008
All Items	175.7	183.3	191.4	196.3	203.5	209.4	216.0	222.9	227.1	235.4	3.7	3.3
Food	170.8	175.1	182.2	185.5	189.2	195.5	200.7	206.4	213.6	223.8	4.8	3.1
Shelter	201.6	211.8	225.1	242.0	251.2	259.2	261.8	267.2	272.5	273.2	0.3	3.5
Fuel & Utilities	117.2	130.9	152.6	133.9	154.4	165.4	193.8	227.1	227.0	264.3	16.4	9.9
Transportation	141.9	152.0	152.4	149.7	154.0	159.1	171.2	174.6	175.3	185.0	5.5	3.0
Medical Care	329.3	347.9	367.5	382.8	397.1	415.7	436.8	456.4	480.9	499.7	3.9	4.7
Recreation	105.1	104.0	105.3	106.8	111.1	108.5	111.1	114.2	116.3	118.6	2.0	1.4
Education & Communication	101.4	102.7	107.0	106.8	110.2	114.9	117.4	119.7	121.5	131.8	8.5	3.0
All Items, Less Food & Energy	190.6	197.0	204.8	213.0	219.4	224.1	227.8	232.4	236.0	239.9	1.7	2.6

### Total Exports

(millions of dollars, not seasonally adjusted)

	1999	2000	2001	2002	2003	2004	2005	2006	2007	2008	2007 to 2008	1999 to 2008
United States	173,205	195,105	182,757	173,276	181,193	204,694	226,494	259,159	290,620	325,034	11.8	7.5
New England	8,280	9,499	8,603	8,127	8,681	9,957	10,658	11,792	12,538	13,985	11.5	6.3
Connecticut	1,808	2,012	2,153	2,078	2,033	2,144	2,438	3,062	3,450	3,829	11.0	9.0
Maine	504	445	453	495	550	608	583	661	688	753	9.5	4.9
Massachusetts	4,201	5,129	4,373	4,177	4,663	5,475	5,513	6,014	6,338	7,073	11.6	6.5
New Hampshire	483	594	600	466	483	573	640	704	729	937	28.5	8.6
Rhode Island	279	296	317	281	294	322	317	383	412	495	20.0	7.0
Vermont	1,006	1,024	708	631	657	835	1,168	968	921	899	-2.4	0.8

### Bankruptcies

(number of consumer and business filings, not seasonally adjusted)

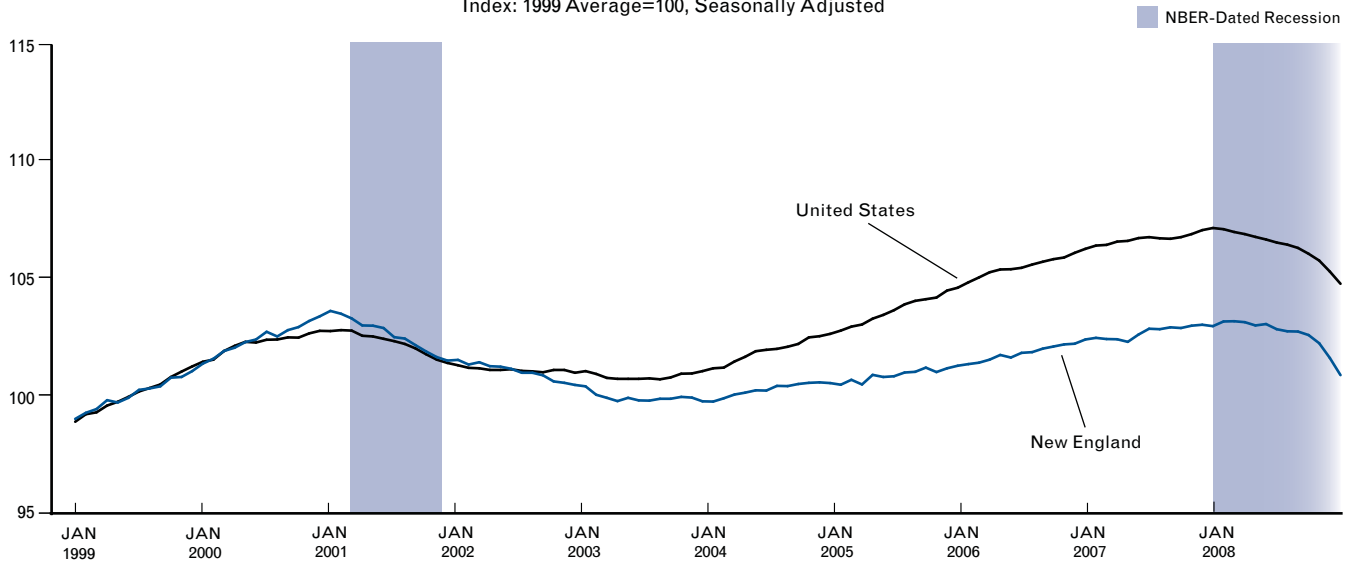
	1999	2000	2001	2002	2003	2004	2005	2006	2007	2008	2007 to 2008	1999 to 2008
United States	329,731	313,238	372,931	394,033	414,891	399,197	519,479	155,337	212,353	278,953	*	*
New England	11,388	9,962	11,093	11,083	11,510	11,200	15,787	4,742	7,146	9,332	*	*
Connecticut	2,966	2,661	2,903	2,937	3,061	2,854	3,818	1,256	1,470	2,056	*	*
Maine	1,043	1,011	1,137	1,105	1,165	1,127	1,654	332	576	758	*	*
Massachusetts	4,649	3,900	4,413	4,349	4,564	4,602	6,677	2,102	3,427	4,143	*	*
New Hampshire	1,026	904	983	1,009	1,106	1,163	1,524	483	746	983	*	*
Rhode Island	1,265	1,114	1,221	1,227	1,139	1,031	1,460	406	704	1,075	*	*
Vermont	439	373	437	456	476	424	656	164	224	318	*	*

	1999	2000	2001	2002	2003	2004	2005	2006	2007	2008	Annual Rate of Change	
											2007 to 2008	1999 to 2008
<b>Economic Activity Index</b> (index: July 1992=100, not seasonally adjusted)												
United States	131.8	136.7	138.4	138.5	140.0	143.8	148.5	153.5	157.4	158.5	0.7	2.1
Connecticut	136.3	142.3	143.1	141.9	141.5	146.1	150.9	156.6	162.0	162.8	0.5	2.0
Maine	128.9	135.3	137.2	137.7	138.8	141.8	141.3	143.4	145.7	144.5	-0.9	1.3
Massachusetts	146.1	155.2	157.0	152.9	152.0	155.8	160.2	164.7	171.2	174.0	1.6	2.0
New Hampshire	156.1	165.2	168.4	167.1	170.1	177.4	183.8	189.5	193.9	195.3	0.7	2.5
Rhode Island	131.0	137.9	140.8	143.6	148.4	153.1	156.3	159.9	162.6	158.4	-2.6	2.2
Vermont	136.5	143.5	146.6	145.8	146.9	152.5	155.5	158.3	160.3	159.1	-0.7	1.7

\*Comparisons of these data are not possible or meaningful.

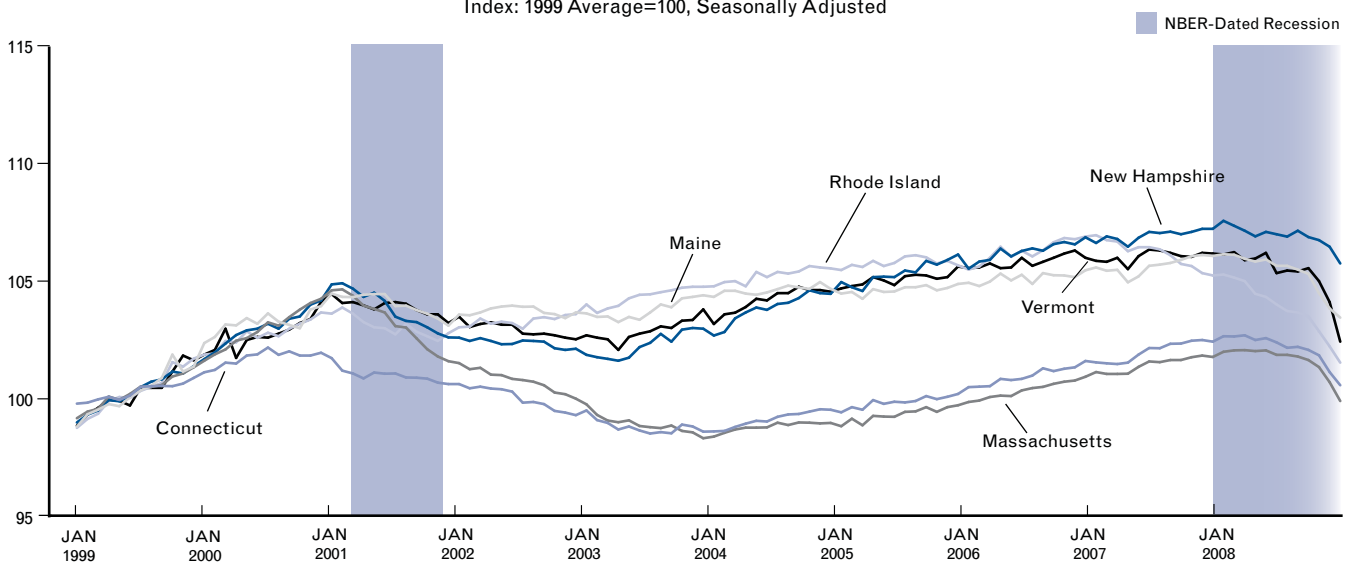
### Total Nonagricultural Employment

Index: 1999 Average=100, Seasonally Adjusted



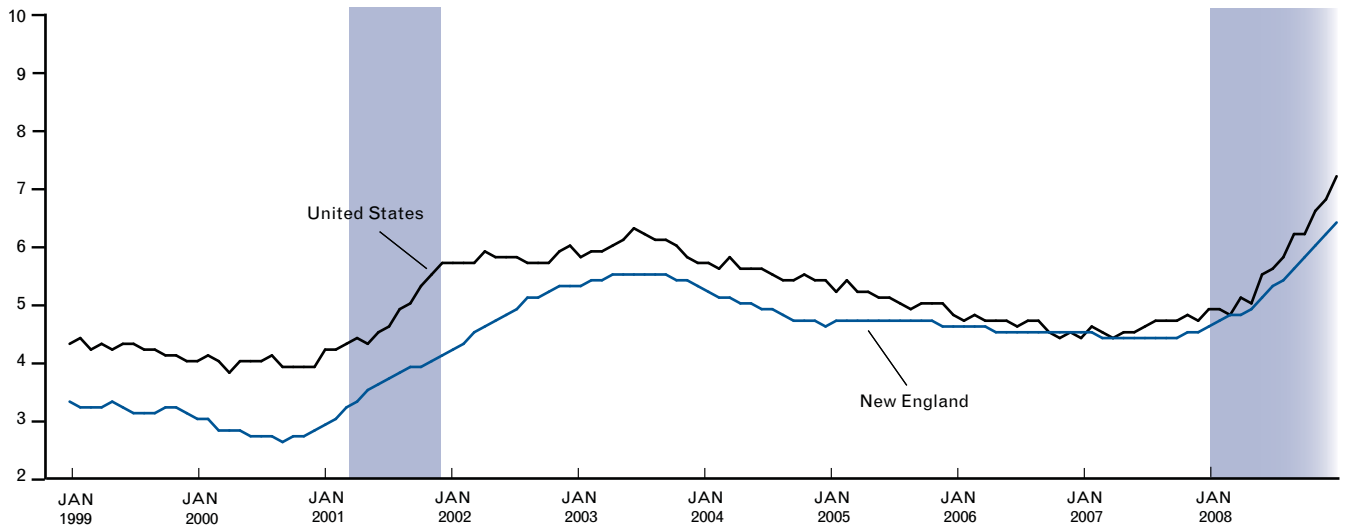
### Total Nonagricultural Employment

Index: 1999 Average=100, Seasonally Adjusted



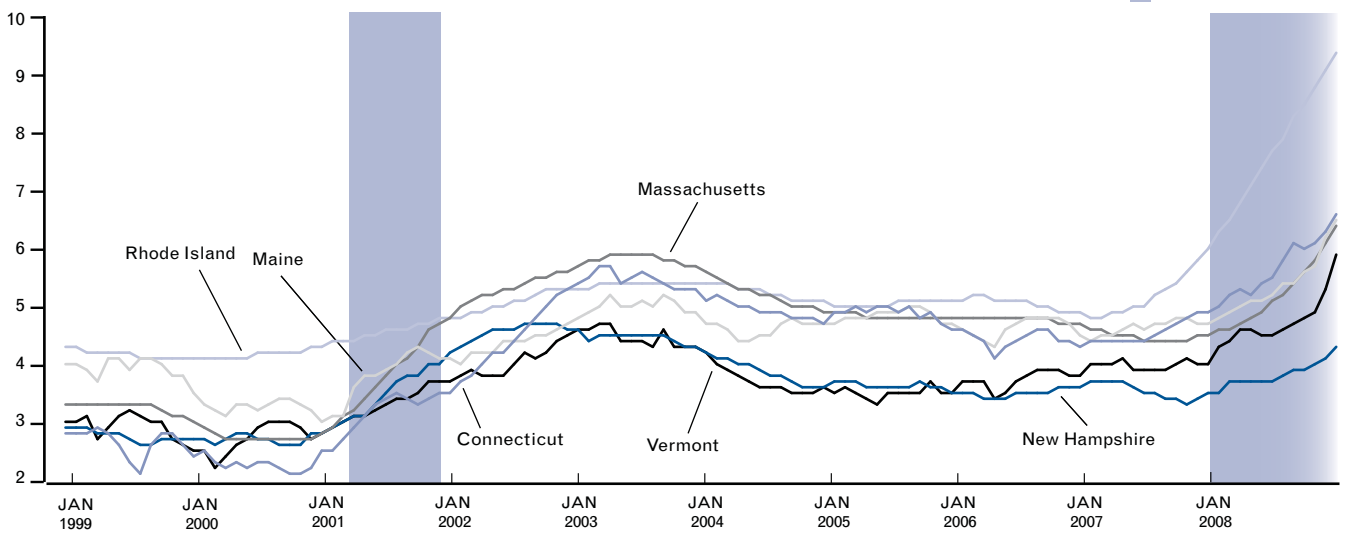
### Unemployment Rate

Percent, Seasonally Adjusted



### Unemployment Rate

Percent, Seasonally Adjusted

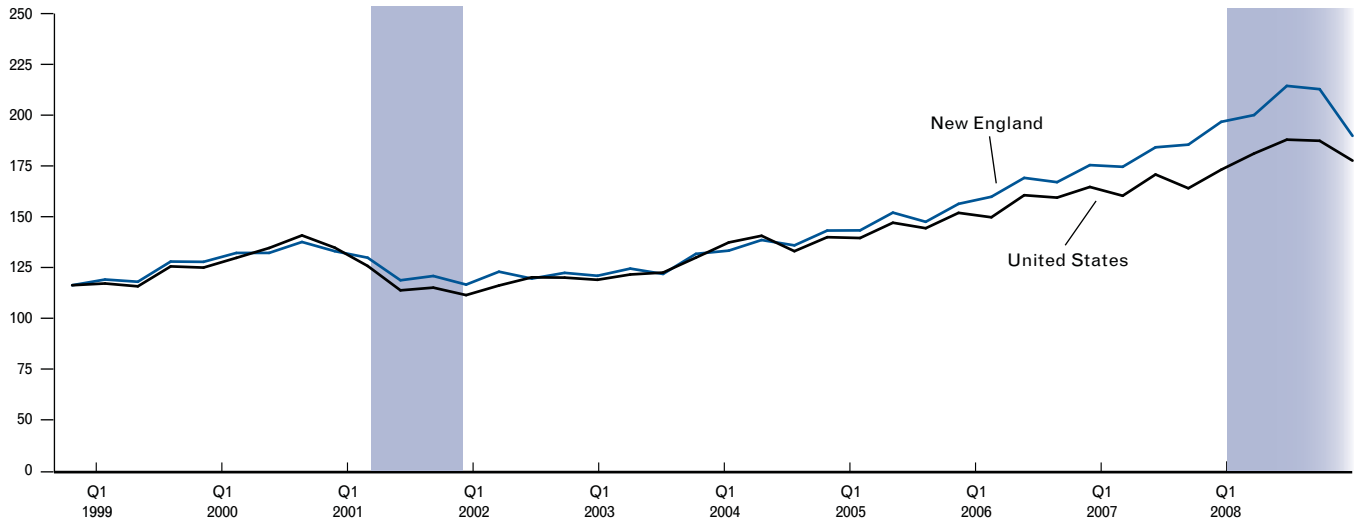




### Total Value of Exports

Index: Q1 1999=100, Not Seasonally Adjusted

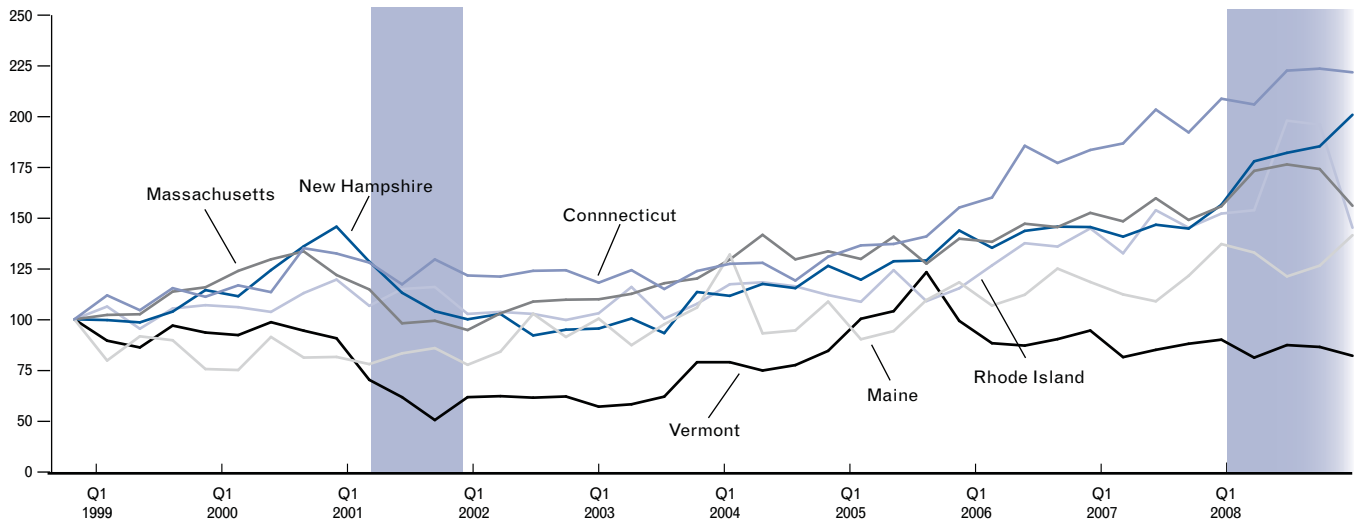
■ NBER-Dated Recession



### Total Value of Exports

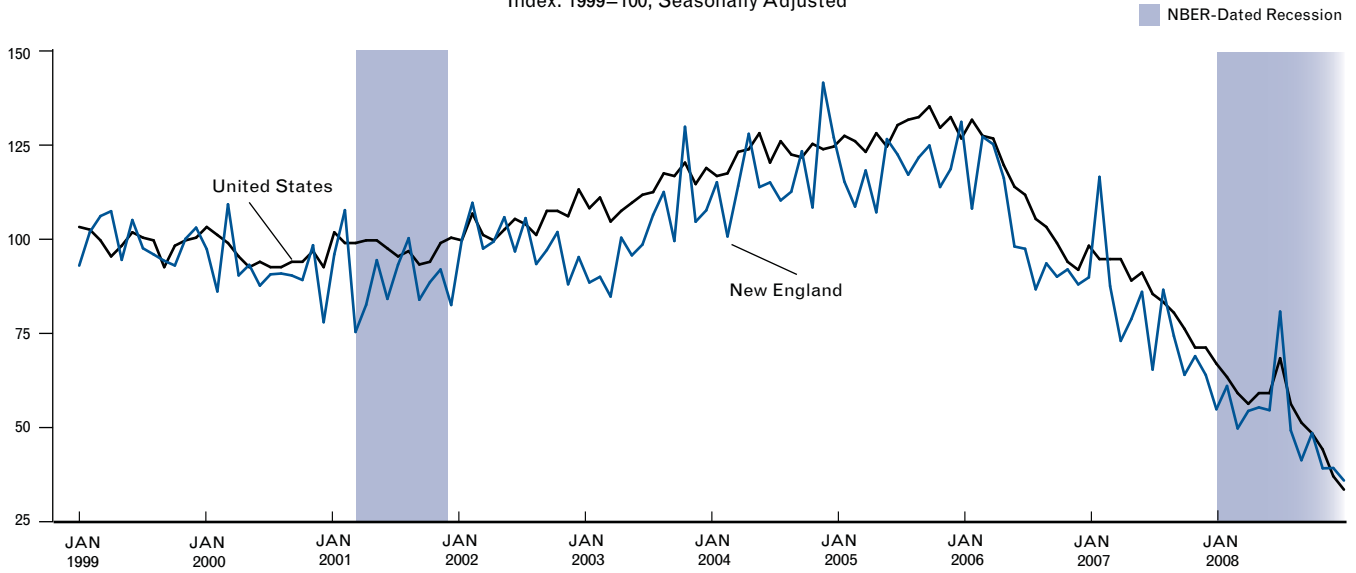
Index: Q1 1999=100, Not Seasonally Adjusted

■ NBER-Dated Recession



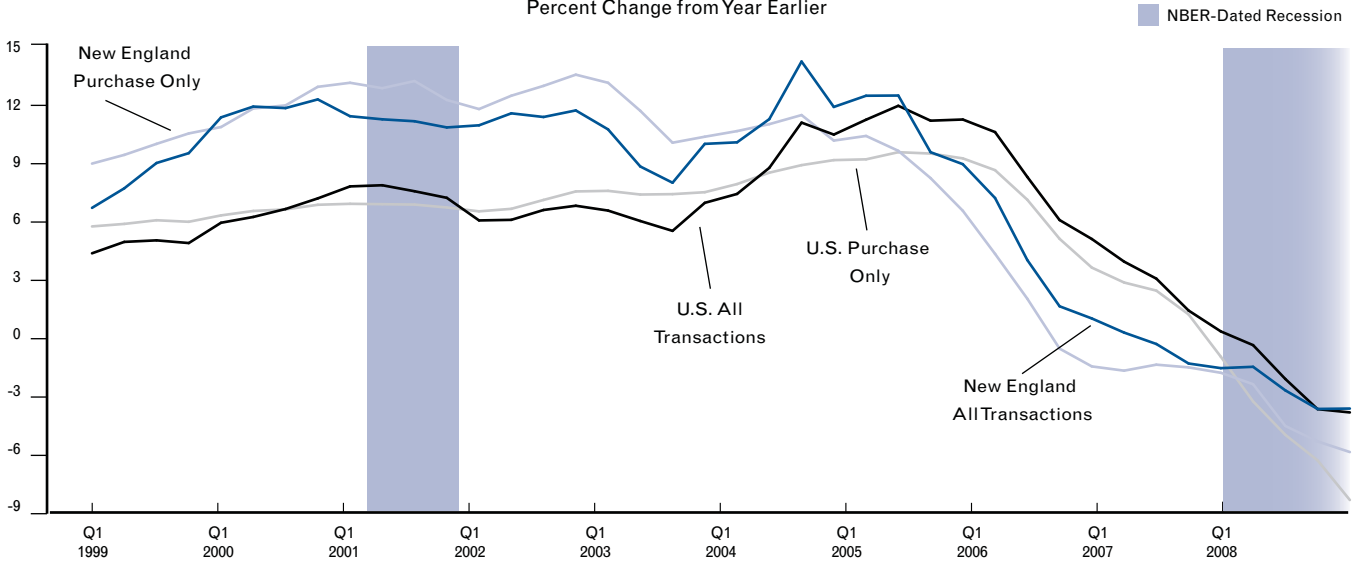
### Total Housing Permits

Index: 1999=100, Seasonally Adjusted



### FHFA Home Price Index

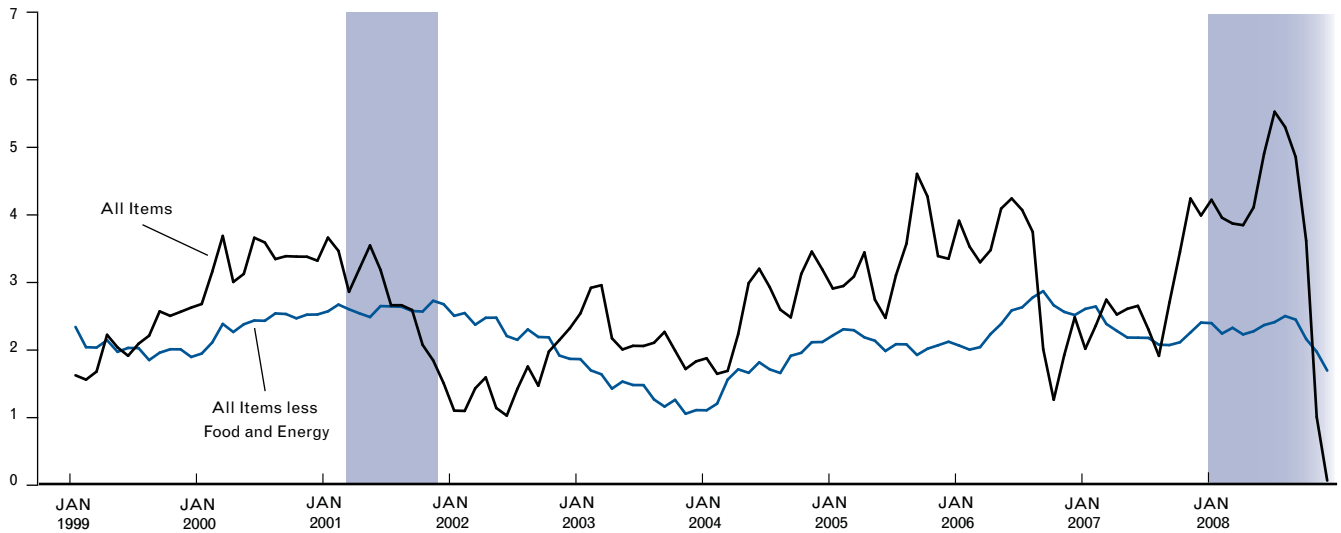
Percent Change from Year Earlier



### U.S. Consumer Price Index

Percent Change from Year Earlier

■ NBER-Dated Recession



### New England Consumer Price Index

Percent Change from Year Earlier

■ NBER-Dated Recession

