

MEASURING FULL EMPLOYMENT WITH $u^* = \sqrt{uv}$

Pascal Michaillat, Emmanuel Saez

November 2023

Available at <https://pascalmichaillat.org/13/>

HOW TO INTERPRET LEGAL CONCEPT OF FULL EMPLOYMENT?

- Employment Act of 1946
 - “policy and responsibility of the federal government...to promote **maximum employment**, production”
- Federal Reserve Reform Act of 1977
 - responsibility of the Federal Reserve “to promote effectively the goals of **maximum employment**, stable prices”
- Full Employment and Balanced Growth Act of 1978
 - “responsibility of the federal government to use all practicable means...to foster and promote...**full employment** and production”

PROPOSITION: FULL EMPLOYMENT = EFFICIENT UNEMPLOYMENT

- maximizes productive use of labor
 - consistent with standard economic theory (Hosios 1990)
 - consistent with spirit of law (“promote maximum production”)
- given voluntary labor-force participation
 - consistent with standard economic interpretation (Rees 1957)
 - consistent with spirit of law (“promote employment opportunities for those able, willing, and seeking to work”)
- not NAIRU: employment mandate is not price mandate
- not NRU: average unemployment is not socially desirable

COMPUTING FULL EMPLOYMENT

- objective: minimize **nonproductive use of labor** $u + v$
 - unemployment rate u : labor devoted to jobseeking
 - vacancy rate v : labor devoted to recruiting
- subject to **hyperbolic Beveridge curve** $uv = A$
 - cannot reduce both u and v
- first-order condition gives solution:

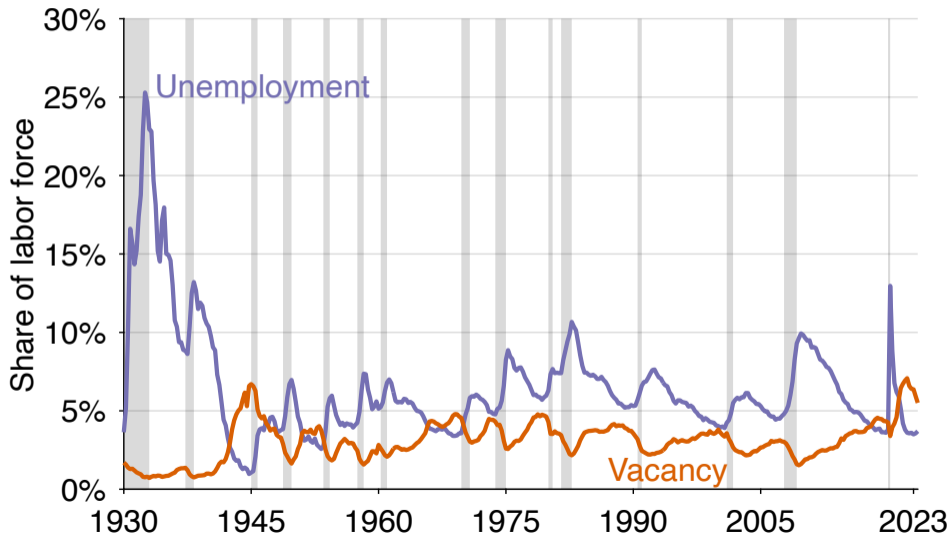
$$\frac{d[u + A/u]}{du} = 0 \Rightarrow 1 - A/u^2 = 0 \Rightarrow u = \sqrt{A}$$

- solution is efficient unemployment rate: $u^* = \sqrt{uv}$

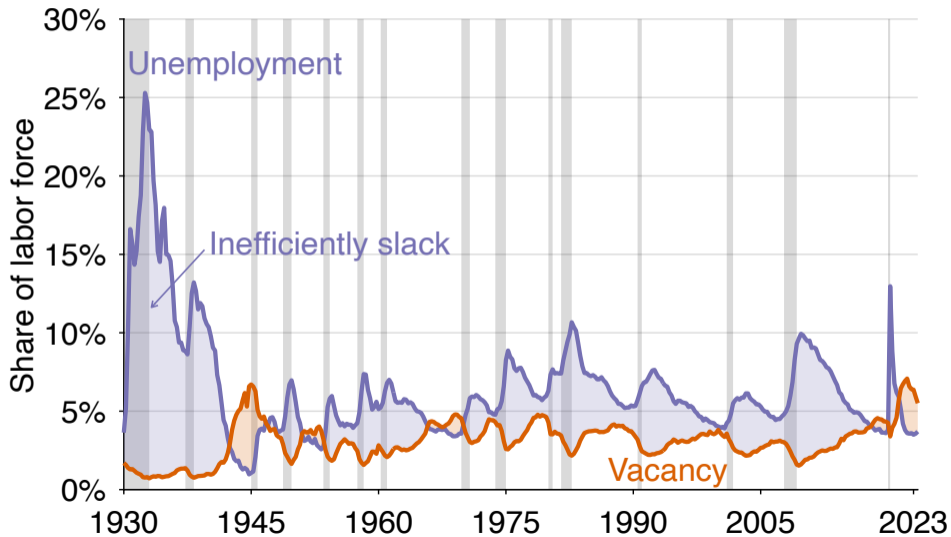
CRITERION FOR FULL EMPLOYMENT, EFFICIENCY

- full-employment, efficient unemployment rate is $u^* = \sqrt{uv}$
- economy is at full employment, efficient when $u = u^*$
 - ~> efficient when $u = v$
- economy is above full employment, inefficiently tight when $u < u^*$
 - ~> inefficiently tight when $u < v$
- economy is below full employment, inefficiently slack when $u > u^*$
 - ~> inefficiently slack when $u > v$

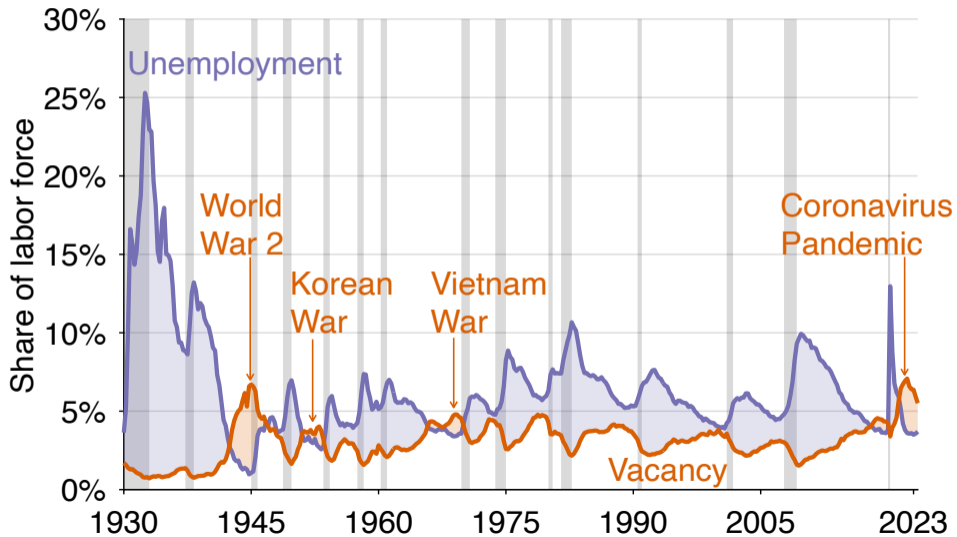
UNEMPLOYMENT & VACANCY DATA FROM BLS, NBER, CONFERENCE BOARD



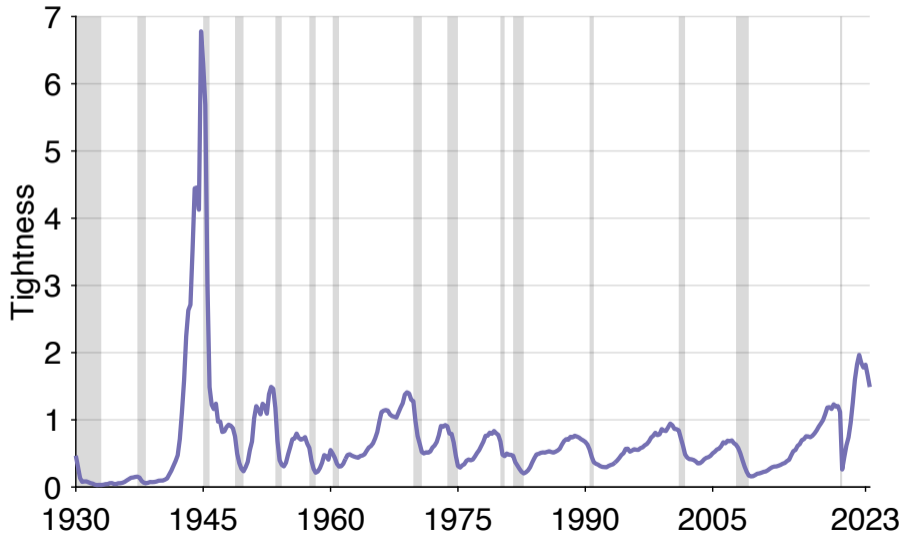
LABOR MARKET IS GENERALLY TOO SLACK



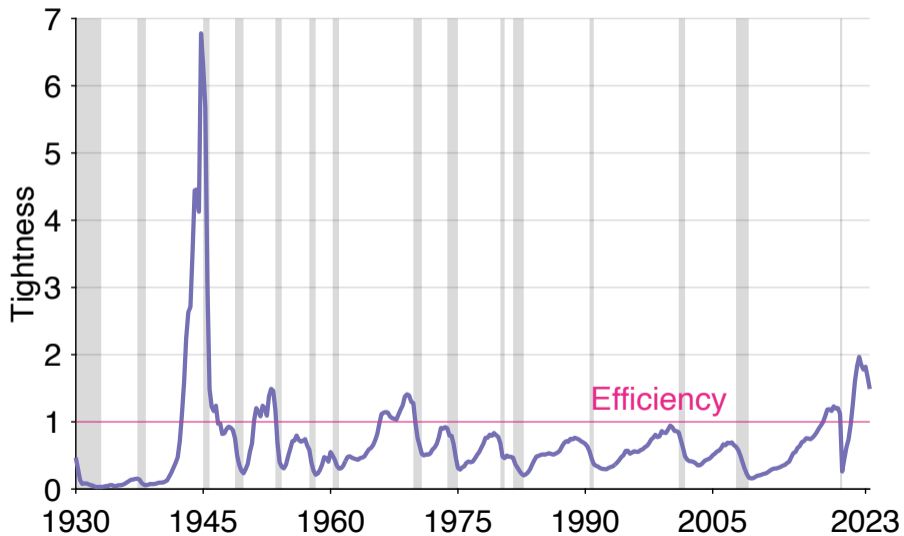
LABOR MARKET IS TOO TIGHT DURING WARS & PANDEMIC



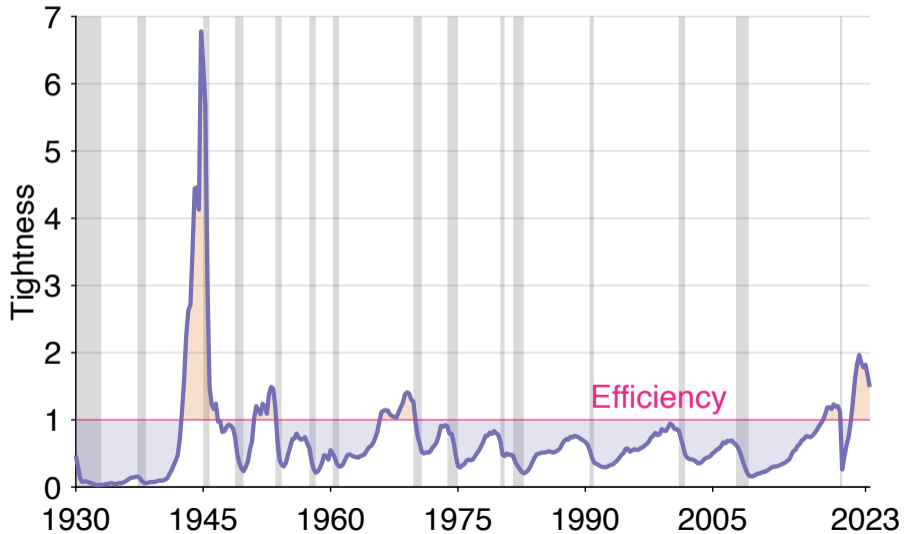
TIGHTNESS v/u SUMMARIZES STATE OF LABOR MARKET



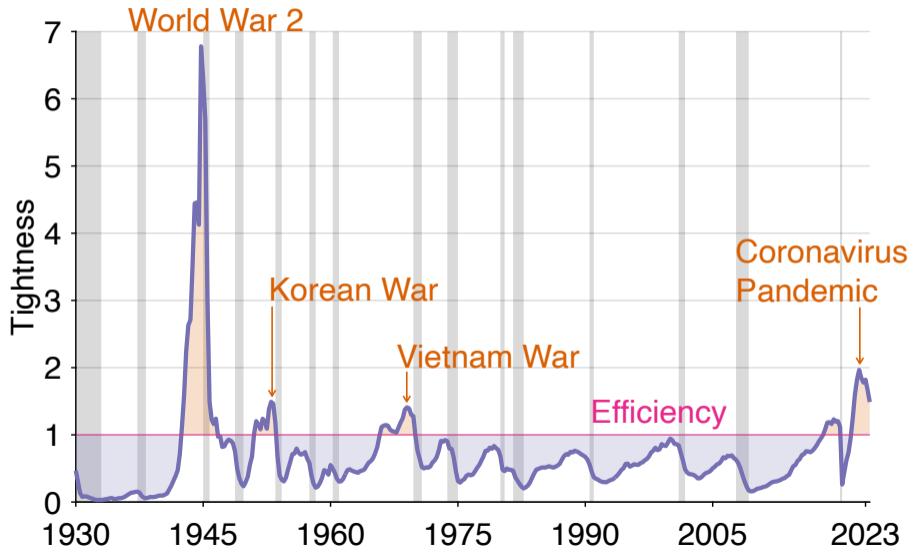
TIGHTNESS v/u SUMMARIZES STATE OF LABOR MARKET



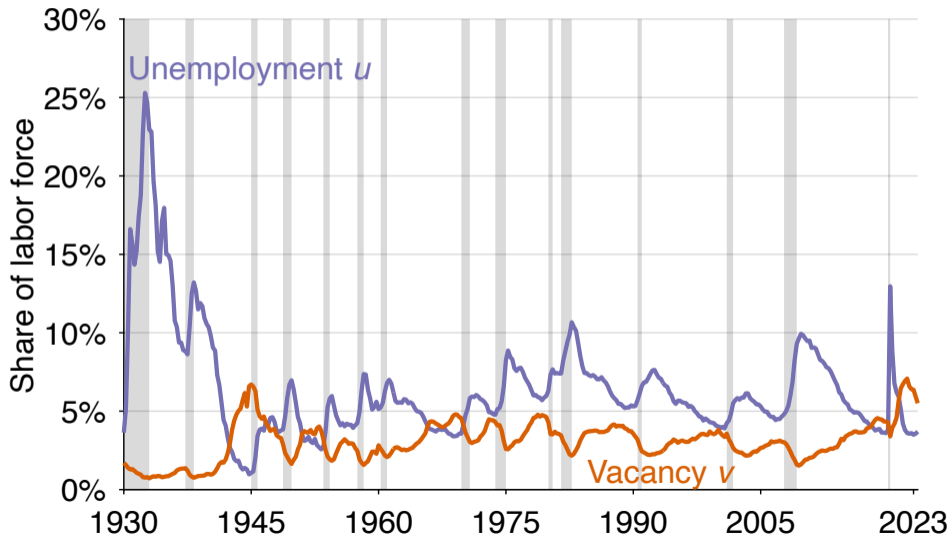
TIGHTNESS v/u SUMMARIZES STATE OF LABOR MARKET



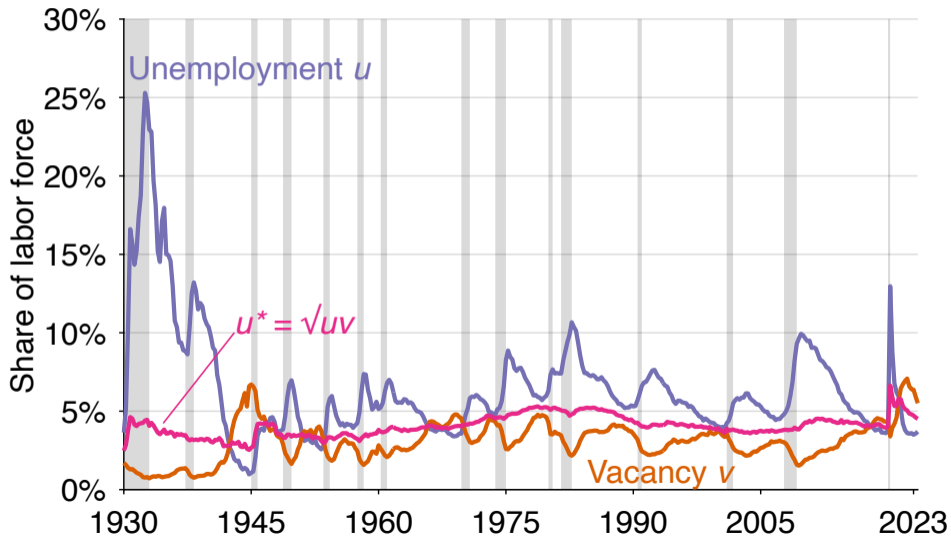
TIGHTNESS v/u SUMMARIZES STATE OF LABOR MARKET



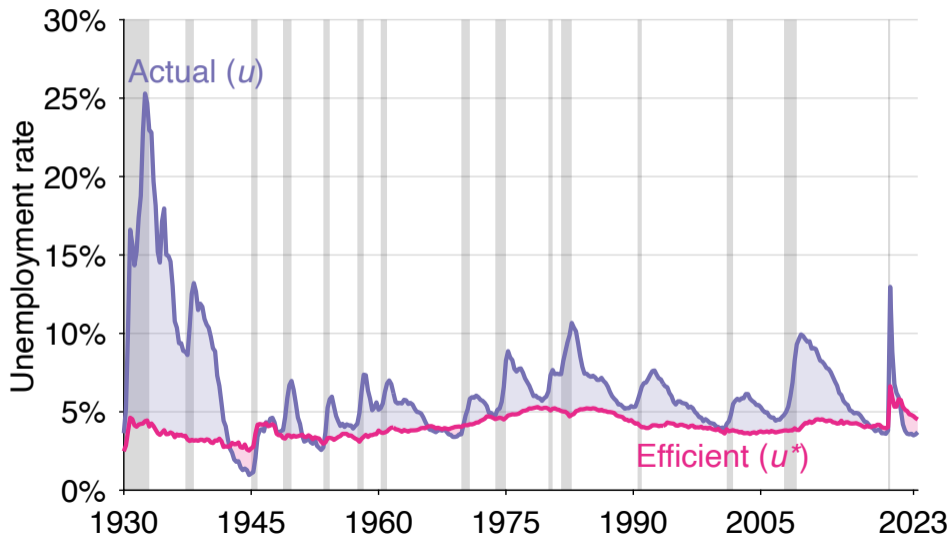
CONSTRUCTION OF u^*



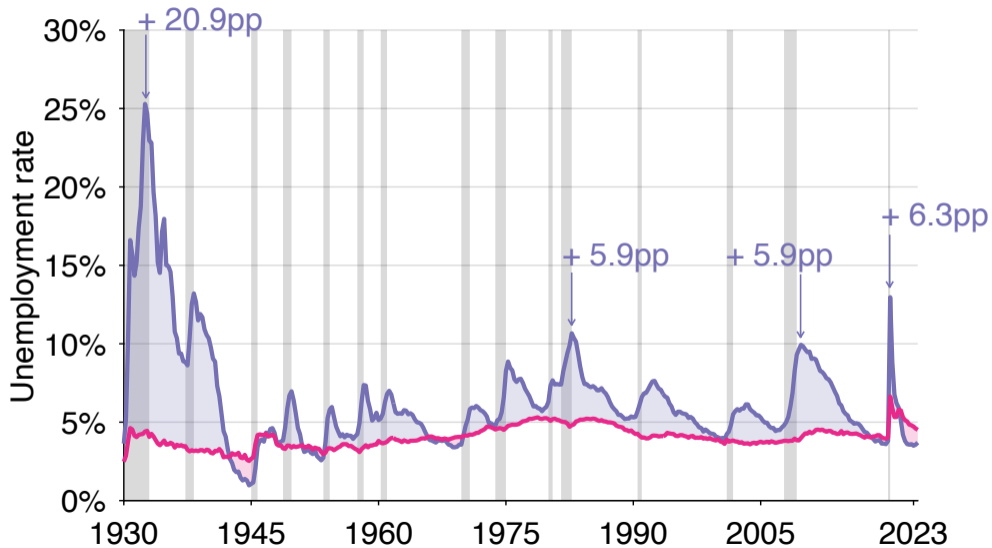
CONSTRUCTION OF u^*



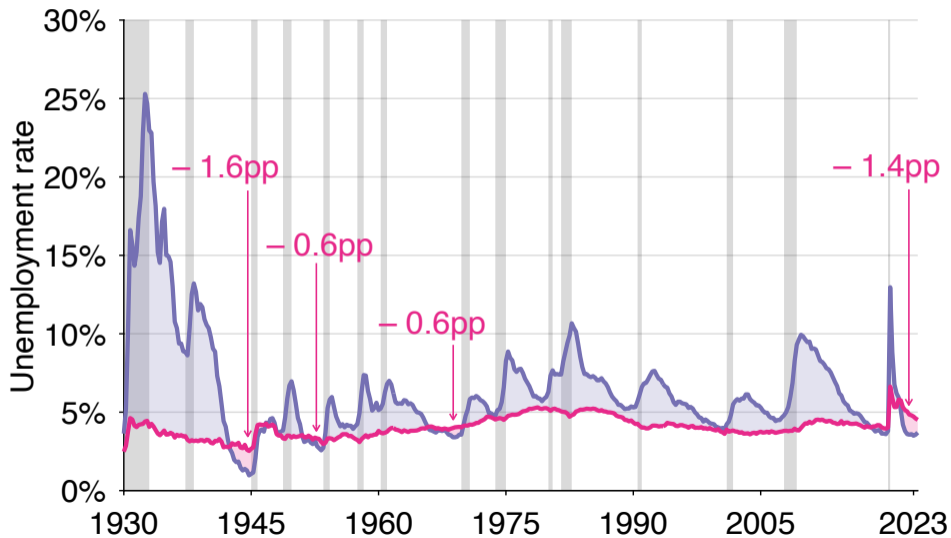
u^* REMAINS IN 2.5%–6.6%, AVERAGES 4.1%



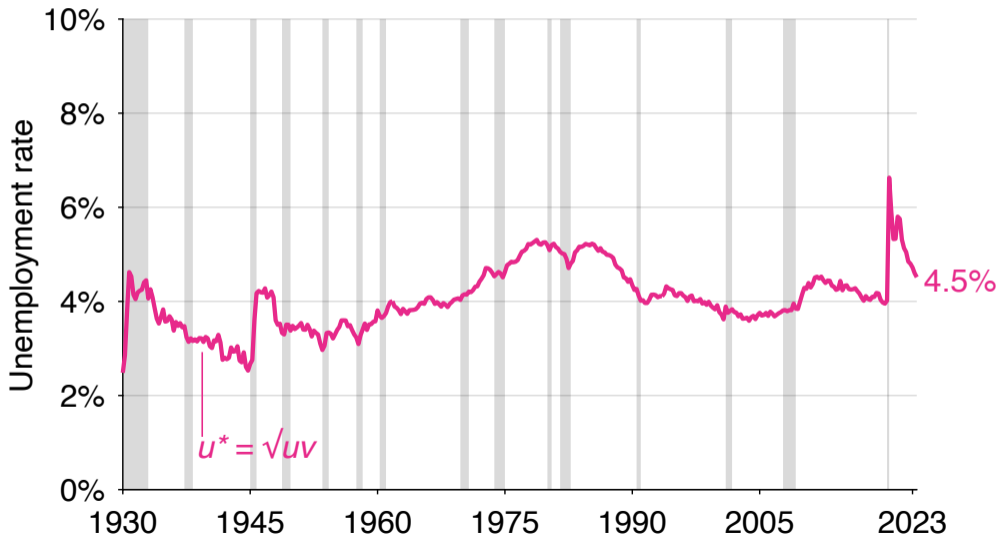
UNEMPLOYMENT GAP $u - u^*$ IS COUNTERCYCLICAL



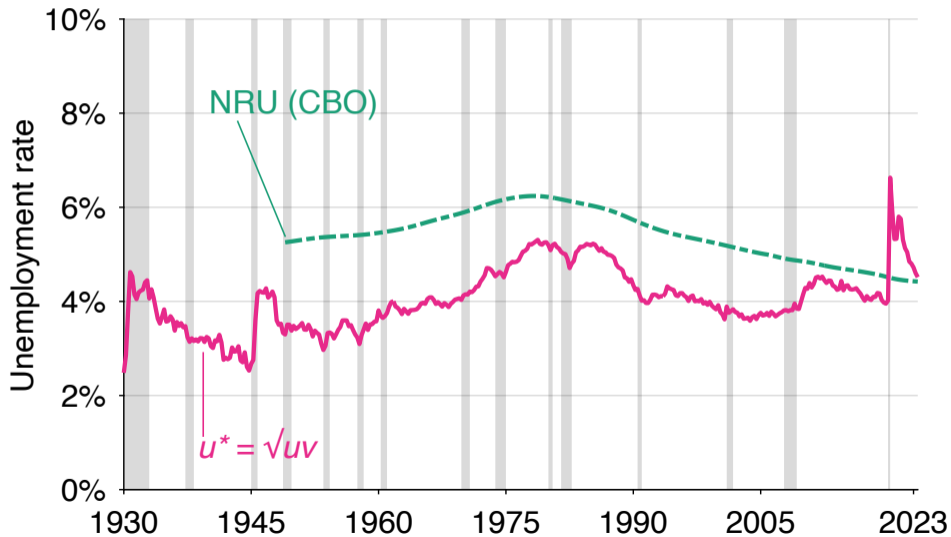
UNEMPLOYMENT GAP $u - u^*$ IS COUNTERCYCLICAL



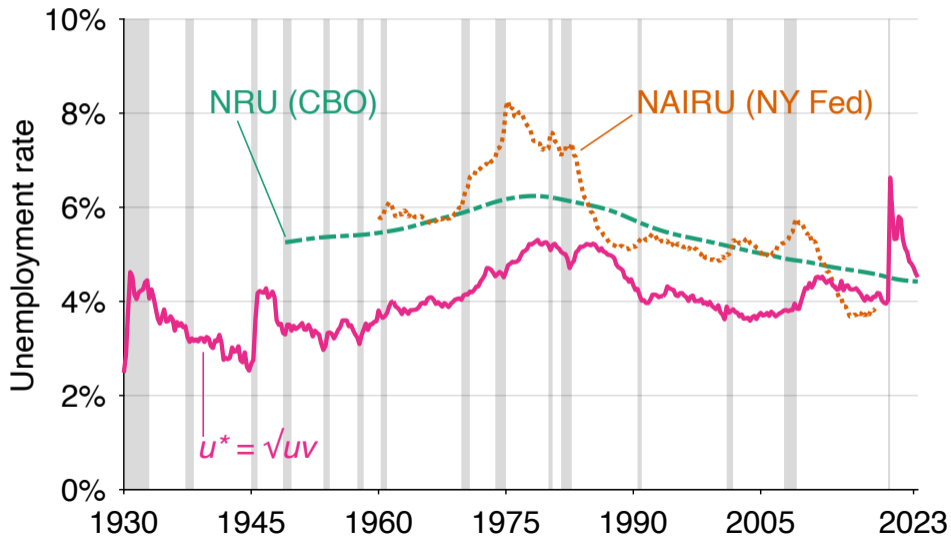
CURRENT TARGET FOR MONETARY POLICY: $u^* = 4.5\%$



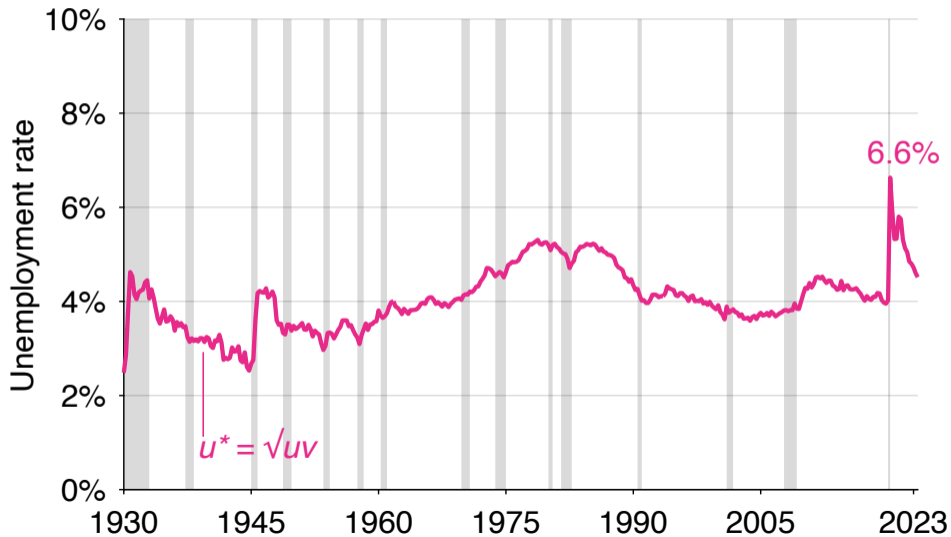
COMPARISON WITH OTHER UNEMPLOYMENT RATES



COMPARISON WITH OTHER UNEMPLOYMENT RATES



u^* INCREASED SO MUCH IN 2020 BECAUSE OF SHIFT OF BEVERIDGE CURVE



u^* INCREASED SO MUCH IN 2020 BECAUSE OF SHIFT OF BEVERIDGE CURVE

