

CHELSEA Massachusetts | Suffolk | Congressional District 7

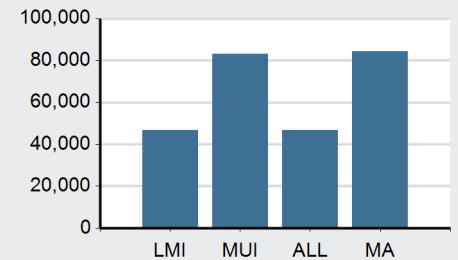
This Summary provides key socioeconomic and demographic indicators for Chelsea's low- and moderate-income (LMI) and middle- and upper-income (MUI) areas. An LMI area is defined as a census tract in which the median family income is below 80 percent of the metropolitan statistical area's median family income. For more information visit www.bostonfed.org/citydata



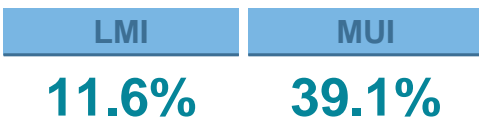
2012 REAL MEDIAN FAMILY INCOME



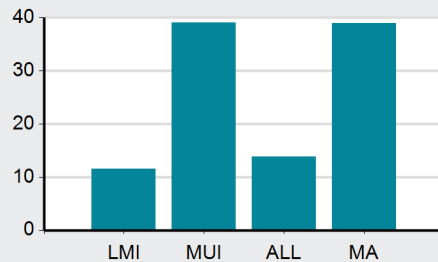
2012 Real Median Family Income (2012 Dollars)



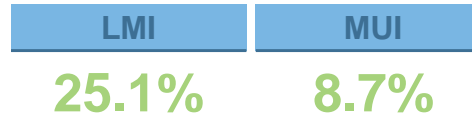
2012 BACHELOR'S DEGREE OR HIGHER



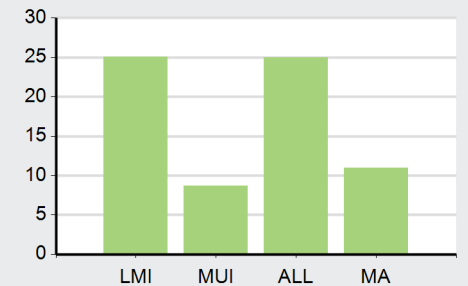
2012 Bachelor's Degree or Higher (percentage of population 25 years and older)



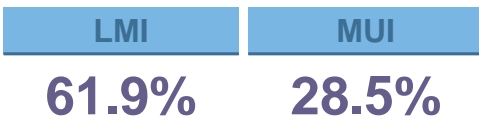
2012 POVERTY RATE



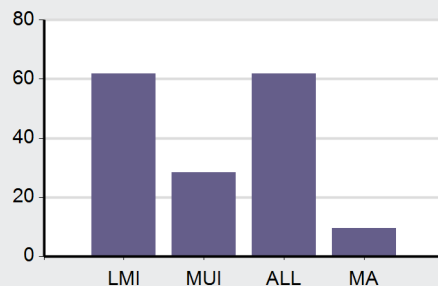
2012 Poverty Rate (Percent)



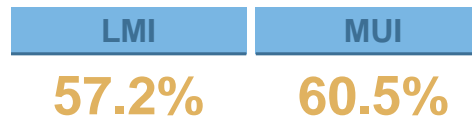
2012 HISPANIC POPULATION



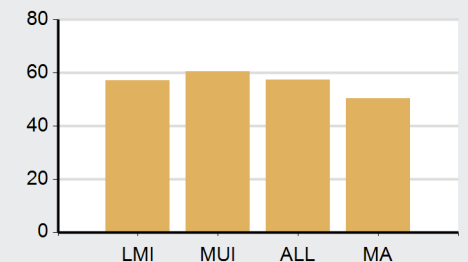
2012 Hispanic Population (Percent)



2012 HOUSING-COST BURDENED HOUSEHOLDS



2012 Housing-cost Burdened Renter Households (Percent)



Source: U.S. Census Bureau. 2000 Census Summary File 3, 2000 Census Summary File 1, 2008 – 2012 American Community Survey (ACS) 5-year estimates.

Note: LMI and MUI classifications from their respective years. Please be aware that the individual tract classifications and boundaries may have changed between census years and subsequently, statistics from different time periods may not be directly comparable. Except for population, LMI and MUI figures are averages across census tracts and may not be strictly comparable to data for the city as a whole. Area population reflects the number of residents living in an LMI or MUI census tracts and does not necessarily indicate the number of people with that particular income category.

New England City Data

Chelsea 2012 City Summary

	2000			2012			Percent change 2000 – 2012
	LMI	MUI	ALL	LMI	MUI	ALL	ALL
Area income							
Area population	32,883	2,197	35,080	33,210	2,317	35,527	1.3
Average Real Median Family Income	43,220	70,408	44,275	46,588	82,946	46,766	5.6
Number of census tracts	5	1	—	7	1	—	—
							Percentage point change 2000 – 2012
Economic characteristics							
Poverty rate	25.2	14.8	23.3	25.1	8.7	25.0	1.7
Labor force participation rate	54.8	59.2	53.8	69.1	62.2	69.3	15.5
Unemployment rate	4.1	1.1	3.9	11.3	6.2	11.6	7.7
Social and demographic characteristics							
Educational attainment (percentage of population 25 years and older)							
High school graduate or higher	52.8	78.7	59.5	59.6	87.8	62.7	3.2
Bachelor's degree or higher	6.8	33.4	10.0	11.6	39.1	13.8	3.8
Percent foreign born	40.9	18.9	36.1	45.4	19.1	44.8	8.7
Percent who speak English less than very well	35.5	14.8	30.8	44.3	14.2	43.3	12.5
Percent 15 years old and under	26.3	10.0	24.7	23.5	16.2	23.9	-0.8
Race and ethnicity (percent of total population)							
Hispanic	54.8	18.7	48.4	61.9	28.5	61.8	13.4
Non-Hispanic White	31.4	73.2	37.6	24.3	60.7	25.1	-12.5
Non-Hispanic Black	5.7	4.9	6.1	5.8	7.2	5.5	-0.6
Non-Hispanic Asian	4.1	1.7	3.9	3.8	2.4	3.0	-0.9
Non-Hispanic Other	3.9	1.5	3.9	7.9	2.4	8.2	4.3
Housing characteristics							
Homeownership rate	6.4	15.4	8.9	27.3	41.1	29.8	20.9
Percent housing cost-burdened households							
Owners	19.7	20.1	19.5	50.3	28.4	48.0	28.5
Renters	43.1	41.9	42.9	57.2	60.5	57.4	14.5

Source: U.S. Census Bureau. 2000 Census Summary File 3, 2000 Census Summary File 1, 2008 – 2012 American Community Survey (ACS) 5-year estimates.

Note: LMI and MUI classifications from their respective years. Individual tract classifications and boundaries may have changed between census years; statistics from different time periods may not be directly comparable.