

Indicators

New England Economic

December 2003

Federal Reserve Bank of Boston

Labor Market Conditions

Income

Consumer Prices

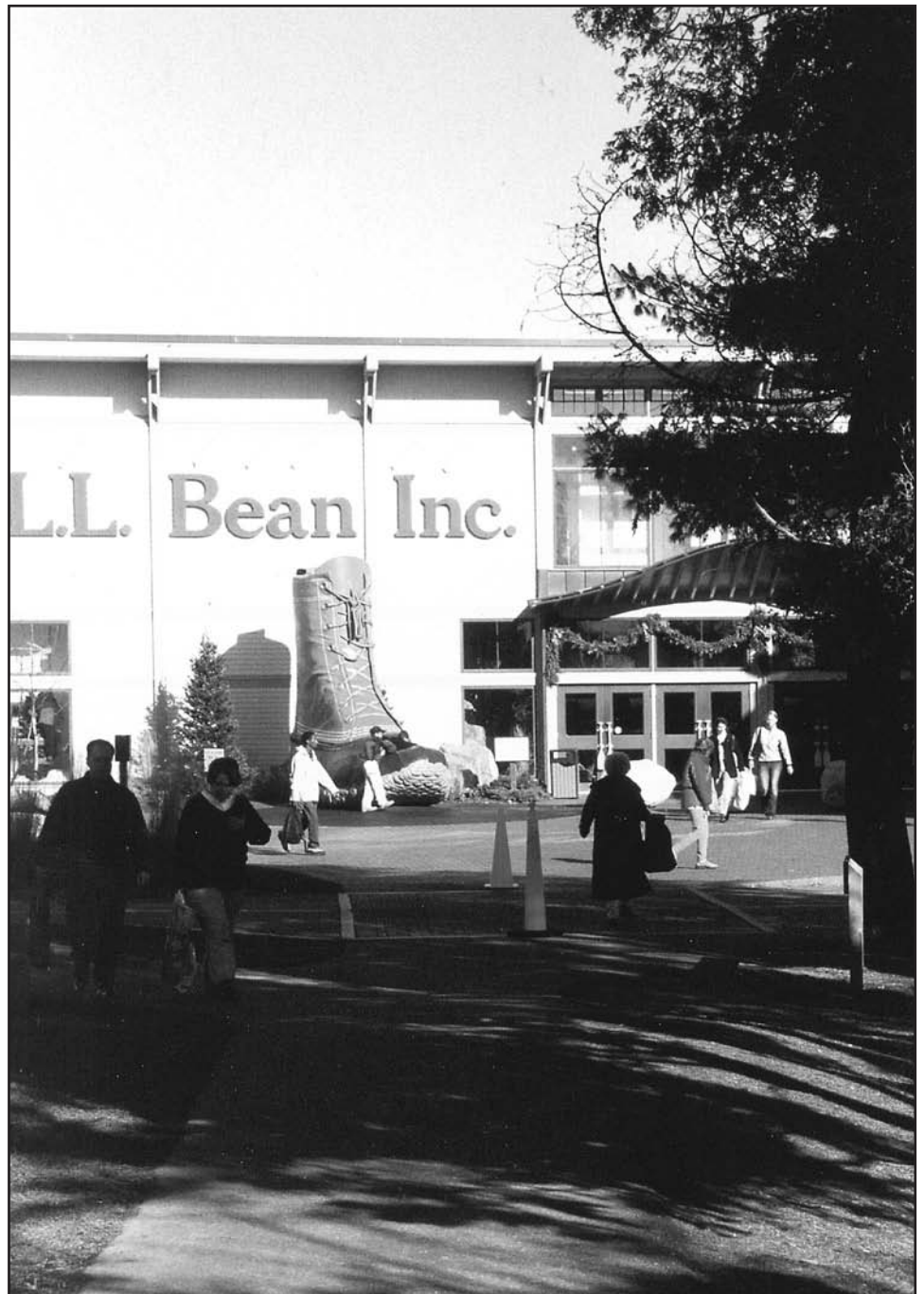
Consumer Confidence

Real Estate

Merchandise Exports

Electricity Sales

State Tax Collections



On-Line

[HTTP://WWW.BOS.FRB.ORG/ECONOMIC/NEEI/NEEI.HTM](http://www.bos.frb.org/economic/NEEI/NEEI.HTM)

Need more timely data? Need historical data?

Check out *Indicators* on the Boston Fed's web site. You'll find the following:

- PDF files of all pages in the most recent issue of *Indicators*, available before *Indicators* arrives by mail.
- ASCII text and CSV files of the complete *Indicators* database, including many unpublished series, such as non-seasonally adjusted employment data, and for most data series, historical data extending back to 1969. These files are updated twice a month and readily load into spreadsheets.
- Full-text HTML and/or PDF versions of recent articles that have appeared in *Indicators*, including "Definitions and Sources," "Comments on Changes to Regional Employment Data," and "The Economic Performance of the New England States."

Indicators

New England Economic

December 2003

Editor

Tom DeCoff

Graphic Designer

Fabienne Anselme Madsen

Production Coordinator

Ann Eggleston

New England Economic Indicators (issn 0548-4448) is published monthly by the Federal Reserve Bank of Boston as a resource for researchers and members of the public interested in the New England economy. For more information on the data, contact Tom DeCoff, *Indicators* Editor, by e-mail at thomas.a.decoff@bos.frb.org or by phone at (617) 973-2185.

Indicators is available without charge. To be placed on the mailing list or for additional copies, contact the Research Library by mail, e-mail, or phone:
Research Library-D
Federal Reserve Bank of Boston
P.O. Box 2076
Boston, MA 02106-2076
boston.library@bos.frb.org
(617) 973-3397

Email Alert!

To be notified when the latest issue of *Indicators* is available on the web, visit the *Indicators* web site at <http://www.bos.frb.org/economic/nee/nee.htm> and click on **Subscribe to E-Mail Alert!**

- 2 **Summary of Latest Data in This Issue**
- 4 **Labor Market Conditions**
- 13 **Income**
- 14 **Consumer Prices**
- 15 **Consumer Confidence**
- 16 **Real Estate**
- 20 **Merchandise Exports**
- 23 **Electricity Sales**
- 24 **State Tax Collections**
- 25 **Sources on the Internet**



L.L. Bean Headquarters, Freeport, ME
Fabienne Anselme Madsen

Summary of Latest Data in This Issue

	New England			United States		
	Percent Change at Annual Rate from			Percent Change at Annual Rate from		
	Current Period	Prior Period	Year Earlier Period	Current Period	Prior Period	Year Earlier Period
Labor Market Conditions	Oct 2003			Oct 2003		
Total Nonagricultural Employment (thousands of jobs, SA)	6,844.6	-1.6	-0.9	130,132	1.2	-0.2
Connecticut	1,643.7	1.1	-1.2			
Maine	605.2	0.8	-0.1			
Massachusetts	3,190.6	-3.9	-1.5			
New Hampshire	622.0	0.8	0.2			
Rhode Island	481.0	-0.2	0.6			
Vermont	302.1	-2.0	0.9			
Employment by Industry or Sector (thousands of jobs, SA)						
Private (Total Nonagricultural less Government)	5,872.1	-1.0	-0.8	108,644	1.3	-0.2
Government	972.5	-5.0	-1.1	21,488	0.6	-0.3
Manufacturing	774.0	0.6	-3.9	14,540	-2.0	-4.0
Construction	283.0	7.5	-3.5	6,847	1.1	1.9
Manufacturing Production Workers (NSA)						
Average Weekly Hours	40.6	-11.1	0.0	40.7	-2.9	0.5
Average Hourly Earnings (dollars)	16.28	1.5	1.8	15.79	-5.9	2.2
Help Wanted Advertising Index (1987=100, NSA)	22	*	-12.0	37	*	-7.5
Average Weekly Initial Claims for Unemployment Insurance (SA)	19,030	*	-13.7	379,900	*	-7.5
	Current Period	Prior Period	Year Earlier Period	Current Period	Prior Period	Year Earlier Period
	Oct 2003			Oct 2003		
Unemployment Rate (percent, SA)	5.1	5.2	5.0	6.0	6.1	5.8
Connecticut	4.9	5.0	4.5			
Maine	5.1	5.0	4.5			
Massachusetts	5.6	5.7	5.5			
New Hampshire	4.3	4.5	5.0			
Rhode Island	4.4	4.5	5.4			
Vermont	4.0	4.3	3.7			

Summary of Latest Data in This Issue

	New England			United States		
	Current Period	Percent Change at Annual Rate from		Current Period	Percent Change at Annual Rate from	
		Prior Period	Year Earlier Period		Prior Period	Year Earlier Period
Income (millions of dollars)	Q2 2003			Q2 2003		
Total Personal Income (SAAR)	539,718	1.6	1.5	9,129,313	3.4	2.8
Wage and Salary Disbursements (SAAR)	300,515	-0.3	0.4	5,046,212	1.8	1.5
Consumer Prices**	Sep 2003			Sep 2003		
Consumer Price Index (1982-84 = 100, NSA)	206.8	11.8	3.9	185.2	4.0	4.2
Consumer Confidence	Nov 2003			Nov 2003		
Consumer Confidence Index (U.S. average for 1985 = 100)***	104.1	*	26.2	91.7	*	8.0
Real Estate	Q3 2003			Q3 2003		
Repeat-Sales Home Price Index (1987:Q1 = 100, NSA)	198.57	7.0	7.5	216.25	4.8	5.4
Connecticut	167.84	8.4	6.9			
Maine	210.43	10.6	7.8			
Massachusetts	208.40	5.6	7.4			
New Hampshire	173.81	8.2	7.2			
Rhode Island	215.53	12.4	11.8			
Vermont	193.24	8.0	5.2			
Sales of Existing Homes (thousands of units, SAAR)	NA	*	NA	7,398	*	18.7
	Oct 2003			Oct 2003		
Housing Permits Authorized (housing units, SA)	5,289	*	28.7	165,000	*	9.3
Single Units	3,576	*	7.1	128,000	*	10.3
Value of Construction Contracts (index, 1980 = 100; total is NSA)	344.1	*	-17.6	379.1	*	9.0
Residential (SA)	416.5	*	6.9	475.3	*	12.8
Nonresidential Building (NSA)	358.0	*	-35.8	294.8	*	-3.2
Nonbuilding (NSA)	141.1	*	-31.5	296.7	*	19.8
Merchandise Exports	Q3 2003			Q3 2003		
Total Merchandise Exports (millions of dollars, NSA)	8,593	*	2.1	175,594	*	2.2
Connecticut	1,914	*	-8.9			
Maine	543	*	-6.9			
Massachusetts	4,784	*	8.8			
New Hampshire	444	*	1.4			
Rhode Island	273	*	1.5			
Vermont	635	*	1.4			
State Tax Collections	Q2 2003			Q2 2003		
Total State Tax Collections (millions of dollars, NSA)	NA	*	NA	150,421	*	0.9
Connecticut	3,311	*	4.9			
Maine	957	*	1.7			
Massachusetts	NA	*	NA			
New Hampshire	387	*	-1.5			
Rhode Island	NA	*	NA			
Vermont	471	*	11.0			

* Period-to-period comparisons of these data are not meaningful.

** The consumer price index for New England is for the Boston area and is published every other month. More recent U.S. data may be available on page 14.

*** U.S. consumer confidence is seasonally adjusted. New England consumer confidence is not seasonally adjusted.

SA: seasonally adjusted

NSA: not seasonally adjusted

SAAR: seasonally adjusted annual rate

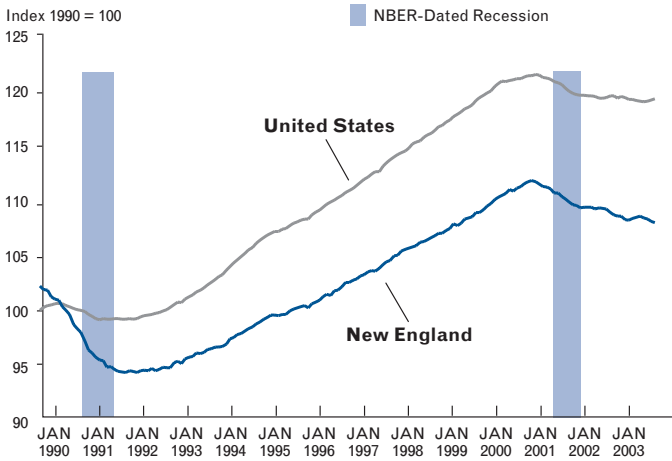
NA: not available

Nonagricultural Employment (thousands of jobs, seasonally adjusted)

	United States	New England	CT	ME	MA	NH	RI	VT
Total Nonagricultural Employment								
2000 Annual	131,790	7,017.4	1,693.2	603.5	3,323.2	622.1	476.7	298.7
2001 Annual	131,830	7,026.5	1,681.1	608.2	3,329.3	627.3	478.5	302.1
2002 Annual	130,376	6,922.8	1,668.2	605.8	3,251.6	618.6	478.9	299.7
2001 October	131,198	6,982.5	1,678.2	606.9	3,296.3	623.1	476.6	301.4
2002 October	130,408	6,905.7	1,662.9	605.9	3,238.4	620.7	478.3	299.5
2002 November	130,409	6,891.7	1,662.4	603.8	3,226.4	619.7	479.3	300.1
2002 December	130,198	6,882.4	1,660.2	604.2	3,220.9	616.7	480.5	299.9
2003 January	130,356	6,883.0	1,661.7	605.4	3,215.1	618.2	479.7	302.9
2003 February	130,235	6,865.0	1,655.0	603.6	3,209.1	615.9	479.6	301.8
2003 March	130,084	6,860.3	1,656.2	604.6	3,202.6	616.3	478.9	301.7
2003 April	130,062	6,869.0	1,655.7	605.2	3,209.5	615.3	479.9	303.4
2003 May	129,986	6,877.6	1,656.5	605.3	3,215.5	615.6	480.9	303.8
2003 June	129,903	6,883.0	1,653.0	605.3	3,222.1	617.8	479.9	304.9
2003 July	129,846	6,875.1	1,641.4	604.9	3,222.3	619.0	483.5	304.0
2003 August	129,881	6,868.3	1,644.3	604.3	3,215.5	618.4	481.8	304.0
2003 September	130,006	6,853.6	1,642.2	604.8	3,201.3	621.6	481.1	302.6
2003 October	130,132	6,844.6	1,643.7	605.2	3,190.6	622.0	481.0	302.1

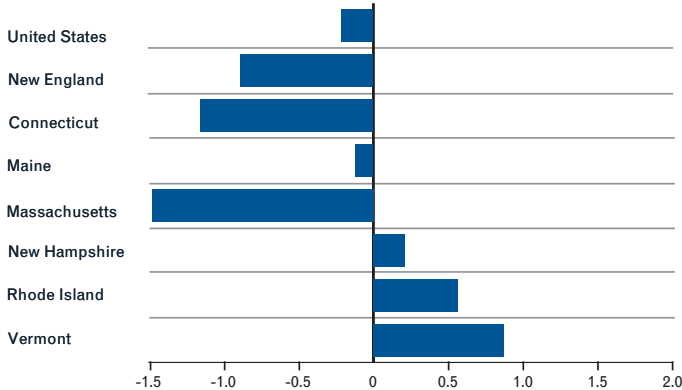
Source: U.S. Bureau of Labor Statistics.

Nonagricultural Employment



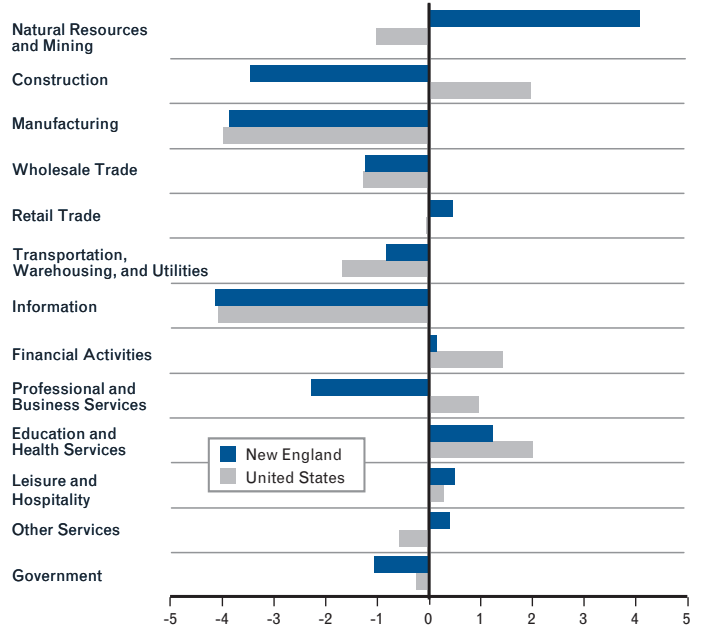
Nonagricultural Employment

Percent Change, October 2002 to October 2003



Employment by Industry

Percent Change, October 2002 to October 2003



Note: These data are not seasonally adjusted.

Employment by Industry (thousands of jobs, seasonally adjusted)

	United States	New England	CT	ME	MA	NH	RI	VT
Total Private Employment*								
2000 Annual	110,998	6,054.1	1,451.3	504.0	2,898.6	538.6	412.3	249.3
2001 Annual	110,712	6,048.7	1,436.7	506.1	2,899.2	541.5	413.3	251.9
2002 Annual	108,893	5,936.7	1,419.4	502.9	2,822.1	530.7	412.8	248.9
2001 October	109,915	5,996.6	1,430.6	504.0	2,864.7	535.4	411.2	250.7
2002 October	108,864	5,922.2	1,417.3	502.8	2,808.5	532.8	412.4	248.4
2002 November	108,869	5,906.8	1,414.9	501.3	2,796.8	531.8	413.1	248.9
2002 December	108,642	5,902.2	1,413.8	501.1	2,792.0	531.4	414.4	249.5
2003 January	108,780	5,895.6	1,410.5	502.2	2,789.0	529.5	413.7	250.7
2003 February	108,647	5,883.1	1,408.3	500.1	2,783.8	527.0	413.9	250.0
2003 March	108,537	5,879.0	1,410.0	501.1	2,777.9	527.4	412.9	249.7
2003 April	108,536	5,887.4	1,409.9	501.2	2,784.6	526.4	414.3	251.0
2003 May	108,502	5,900.9	1,410.8	501.2	2,793.0	528.8	415.5	251.6
2003 June	108,427	5,901.7	1,408.6	500.7	2,797.0	528.5	414.3	252.6
2003 July	108,388	5,899.5	1,400.2	501.0	2,799.3	529.9	417.0	252.1
2003 August	108,411	5,891.9	1,398.5	501.1	2,795.2	528.7	415.8	252.6
2003 September	108,528	5,876.9	1,399.4	501.8	2,779.6	529.0	415.7	251.4
2003 October	108,644	5,872.1	1,403.1	502.2	2,770.4	530.2	415.5	250.7
Government Employment								
2000 Annual	20,793	963.3	241.9	99.6	424.6	83.5	64.4	49.4
2001 Annual	21,118	977.8	244.5	102.0	430.1	85.8	65.2	50.2
2002 Annual	21,483	986.1	248.8	102.9	429.5	87.9	66.1	50.8
2001 October	21,283	985.9	247.6	102.9	431.6	87.7	65.4	50.7
2002 October	21,544	983.5	245.6	103.1	429.9	87.9	65.9	51.1
2002 November	21,540	984.9	247.5	102.5	429.6	87.9	66.2	51.2
2002 December	21,556	980.2	246.4	103.1	428.9	85.3	66.1	50.4
2003 January	21,576	987.4	251.2	103.2	426.1	88.7	66.0	52.2
2003 February	21,588	981.9	246.7	103.5	425.3	88.9	65.7	51.8
2003 March	21,547	981.3	246.2	103.5	424.7	88.9	66.0	52.0
2003 April	21,526	981.6	245.8	104.0	424.9	88.9	65.6	52.4
2003 May	21,484	976.7	245.7	104.1	422.5	86.8	65.4	52.2
2003 June	21,476	981.3	244.4	104.6	425.1	89.3	65.6	52.3
2003 July	21,458	975.6	241.2	103.9	423.0	89.1	66.5	51.9
2003 August	21,470	976.4	245.8	103.2	420.3	89.7	66.0	51.4
2003 September	21,478	976.7	242.8	103.0	421.7	92.6	65.4	51.2
2003 October	21,488	972.5	240.6	103.0	420.2	91.8	65.5	51.4
Manufacturing Employment								
2000 Annual	17,265	943.2	235.7	79.5	407.9	102.5	71.2	46.3
2001 Annual	16,441	899.9	226.7	74.6	387.8	97.4	67.8	45.6
2002 Annual	15,304	816.8	212.9	68.2	347.6	85.2	62.3	40.6
2001 October	15,969	868.7	221.1	72.2	373.1	92.4	65.6	44.3
2002 October	15,143	805.5	210.6	67.3	342.8	84.4	61.0	39.4
2002 November	15,091	802.8	209.9	68.0	341.2	83.7	60.8	39.2
2002 December	15,020	798.4	209.3	67.2	339.7	82.8	60.6	38.8
2003 January	14,982	793.7	208.6	65.1	338.3	81.5	61.1	39.1
2003 February	14,922	789.9	206.6	64.6	337.7	80.7	61.3	39.0
2003 March	14,874	788.5	206.7	64.5	336.7	80.9	60.8	38.9
2003 April	14,795	785.0	205.4	64.7	334.0	81.5	60.6	38.8
2003 May	14,746	784.0	204.6	64.5	333.7	82.1	60.4	38.7
2003 June	14,692	778.3	203.5	63.1	331.0	82.3	59.9	38.5
2003 July	14,631	777.4	202.1	63.4	330.1	82.7	60.6	38.5
2003 August	14,592	775.3	201.7	62.6	330.4	82.4	59.7	38.5
2003 September	14,564	773.6	200.8	63.0	330.7	82.0	59.4	37.7
2003 October	14,540	774.0	200.6	63.4	330.8	81.7	59.0	38.5

Source: U.S. Bureau of Labor Statistics.

* Total private employment is calculated as total nonagricultural employment less government employment.

Table continued

Employment by Industry, continued (thousands of jobs, seasonally adjusted)

	United States	New England	CT	ME	MA	NH	RI	VT
Construction Employment								
2000 Annual	6,788	281.0	64.6	29.2	129.2	25.0	18.2	14.9
2001 Annual	6,828	295.6	65.4	29.8	139.0	27.2	19.0	15.2
2002 Annual	6,734	294.9	63.6	29.3	140.1	27.8	19.4	14.8
2001 October	6,809	297.6	65.3	29.6	140.5	27.8	19.2	15.2
2002 October	6,720	293.4	62.7	29.2	139.9	28.1	19.1	14.4
2002 November	6,745	293.9	62.6	29.5	140.1	27.9	19.1	14.7
2002 December	6,731	293.0	62.1	29.3	139.0	28.2	19.3	15.1
2003 January	6,738	290.6	61.0	28.8	138.3	28.2	19.3	15.0
2003 February	6,700	288.1	60.2	28.6	137.6	27.1	19.3	15.3
2003 March	6,720	285.6	60.6	28.7	134.3	27.3	19.5	15.2
2003 April	6,760	283.3	60.8	28.8	132.0	26.9	19.5	15.3
2003 May	6,786	283.2	60.3	28.9	132.3	26.9	19.9	14.9
2003 June	6,800	281.3	59.5	28.7	131.4	26.6	20.3	14.8
2003 July	6,804	282.5	59.1	29.1	131.9	26.8	20.6	15.0
2003 August	6,825	281.1	58.6	28.8	131.5	26.9	20.5	14.8
2003 September	6,841	281.3	59.3	29.0	131.4	26.5	20.2	14.9
2003 October	6,847	283.0	60.2	28.8	132.2	26.7	20.4	14.7

Trade, Transportation, and Utilities Employment

2000 Annual	26,222	NA	317.5	122.7	596.8	137.1	79.6	NA
2001 Annual	25,986	NA	312.2	123.6	592.3	137.3	79.3	NA
2002 Annual	25,496	NA	308.0	124.5	578.3	138.7	80.4	NA
2001 October	25,798	NA	311.1	123.3	587.0	137.4	78.6	NA
2002 October	25,439	NA	306.6	125.5	577.3	140.4	80.5	NA
2002 November	25,406	NA	293.3	125.4	574.9	139.6	79.7	NA
2002 December	25,378	NA	292.2	124.9	575.8	138.9	78.5	NA
2003 January	25,376	NA	306.8	123.5	577.8	138.2	81.5	NA
2003 February	25,346	NA	315.4	122.7	580.1	138.9	82.2	NA
2003 March	25,338	NA	319.2	121.8	578.9	138.2	82.7	NA
2003 April	25,321	NA	318.6	121.7	580.3	137.9	83.2	NA
2003 May	25,282	NA	317.8	121.8	580.5	138.9	83.4	NA
2003 June	25,238	NA	318.7	122.8	581.2	139.2	83.3	NA
2003 July	25,211	NA	313.1	124.3	574.1	138.0	83.3	NA
2003 August	25,217	NA	309.5	124.8	569.6	138.3	83.4	NA
2003 September	25,241	NA	311.3	125.5	574.1	140.0	84.3	NA
2003 October	25,269	NA	306.0	126.1	573.8	139.9	83.2	NA

Professional and Business Services Employment

2000 Annual	16,670	NA	215.9	51.8	492.9	NA	50.9	20.8
2001 Annual	16,480	NA	209.9	51.8	486.1	NA	50.5	20.7
2002 Annual	16,011	NA	202.2	51.4	454.7	NA	49.0	20.4
2001 October	16,226	NA	207.6	51.0	472.7	NA	50.4	20.2
2002 October	16,036	NA	201.6	51.2	449.5	NA	48.3	21.1
2002 November	16,014	NA	200.2	51.6	447.2	NA	48.1	21.0
2002 December	15,972	NA	198.8	50.9	443.7	NA	48.2	20.6
2003 January	16,015	NA	198.2	51.3	438.6	NA	47.5	20.3
2003 February	16,043	NA	198.1	50.9	434.6	NA	46.7	20.6
2003 March	15,980	NA	199.9	50.7	434.8	NA	46.8	20.6
2003 April	15,989	NA	201.4	50.6	438.6	NA	48.3	20.8
2003 May	16,002	NA	200.6	51.1	440.5	NA	48.1	21.0
2003 June	16,006	NA	200.3	51.7	440.4	NA	48.2	21.0
2003 July	16,063	NA	198.3	51.5	440.9	NA	49.6	21.2
2003 August	16,054	NA	198.5	51.2	440.6	NA	49.0	20.9
2003 September	16,124	NA	197.6	51.2	439.8	NA	48.3	20.8
2003 October	16,167	NA	198.8	51.3	434.6	NA	48.1	20.7

NA: not available. The Bureau of Labor Statistics reports that employment data for several industries across the New England states could not be seasonally adjusted with sufficient precision.

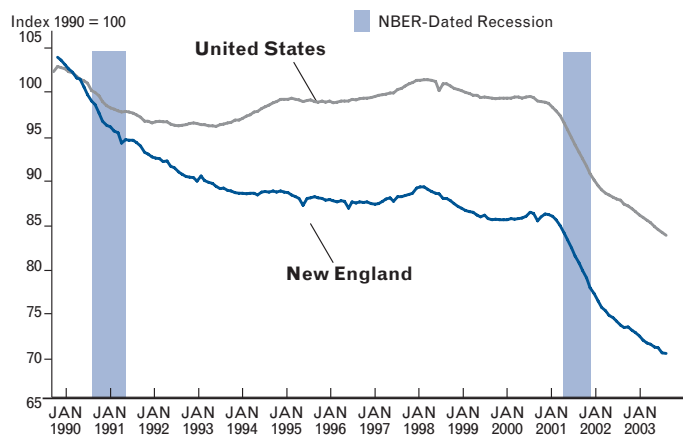
Employment by Industry, continued (thousands of jobs, seasonally adjusted)

	Education and Health Services Employment					Leisure and Hospitality Employment				
	United States	CT	ME	MA	VT	United States	ME	MA	NH	RI
2000 Annual	15,108	245.3	97.5	545.5	46.0	11,860	55.9	274.6	58.3	46.3
2001 Annual	15,644	252.7	100.7	554.9	47.9	12,032	56.5	279.5	59.5	46.8
2002 Annual	16,184	259.1	104.7	567.4	50.2	11,970	56.8	285.3	60.8	48.2
2001 October	15,828	256.4	101.7	559.0	48.5	12,001	56.4	278.1	59.6	46.9
2002 October	16,315	263.8	104.6	569.0	50.5	12,032	56.3	284.6	60.6	48.8
2002 November	16,357	264.3	105.4	569.8	50.6	12,069	56.4	280.6	60.2	48.2
2002 December	16,373	263.8	105.6	570.7	51.0	12,019	56.4	279.1	61.1	48.0
2003 January	16,405	260.1	106.3	570.1	52.2	12,132	57.7	281.0	61.7	48.1
2003 February	16,430	264.8	106.4	571.1	50.0	12,084	57.7	279.8	61.6	47.8
2003 March	16,452	263.5	106.7	569.5	50.0	12,050	58.1	281.2	61.7	47.1
2003 April	16,483	266.2	107.0	572.9	50.6	12,043	57.0	284.1	62.1	47.6
2003 May	16,509	265.2	106.8	574.7	52.0	12,026	57.0	287.9	62.8	47.7
2003 June	16,503	260.4	107.0	574.6	53.4	12,039	56.6	292.9	63.5	47.8
2003 July	16,487	258.7	107.2	573.9	53.4	12,051	57.6	298.9	64.6	47.9
2003 August	16,541	257.1	107.2	575.1	53.6	12,051	57.3	299.1	64.2	48.6
2003 September	16,569	262.8	107.4	574.0	52.7	12,058	56.3	289.3	63.4	48.4
2003 October	16,625	266.7	107.4	574.6	51.3	12,081	56.2	284.3	62.8	48.4

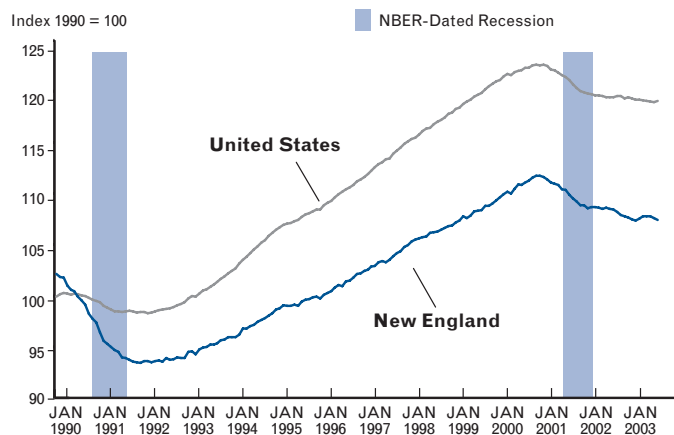
	Information Employment			Financial Activities Employment			Other Services Employment		
	United States	CT	MA	United States	CT	MA	United States	MA	RI
2000 Annual	3,630	46.4	111.1	7,688	143.1	228.1	5,168	111.1	20.8
2001 Annual	3,629	44.7	111.4	7,808	142.9	230.7	5,258	116.0	21.2
2002 Annual	3,420	41.1	99.2	7,843	143.0	229.7	5,348	118.3	22.0
2001 October	3,555	43.2	106.9	7,830	142.8	229.9	5,297	115.9	21.1
2002 October	3,392	40.2	96.4	7,872	143.1	230.4	5,343	116.9	22.8
2002 November	3,382	40.0	95.8	7,880	142.3	228.7	5,352	116.8	22.4
2002 December	3,353	40.0	95.5	7,889	142.6	229.7	5,335	117.2	22.4
2003 January	3,328	40.2	96.4	7,902	141.1	230.0	5,334	117.0	22.2
2003 February	3,308	40.1	95.4	7,916	141.4	229.2	5,329	116.9	22.2
2003 March	3,305	40.4	94.7	7,930	141.8	229.0	5,323	117.4	22.5
2003 April	3,303	40.1	94.7	7,956	142.4	229.3	5,322	117.2	22.7
2003 May	3,294	40.0	94.3	7,971	143.0	229.4	5,320	118.0	23.2
2003 June	3,285	40.1	93.6	7,972	143.1	230.3	5,323	119.9	23.5
2003 July	3,278	40.0	93.3	7,981	142.5	231.0	5,316	123.5	23.9
2003 August	3,267	39.7	92.3	7,980	142.4	231.7	5,319	123.2	23.6
2003 September	3,265	39.4	90.8	7,989	142.9	230.6	5,313	117.3	22.9
2003 October	3,257	39.4	90.7	7,980	143.1	230.6	5,313	117.1	23.2

Source: U.S. Bureau of Labor Statistics.

Manufacturing Employment



Total Private Employment



Unemployment (seasonally adjusted)

	United States	New England	CT	ME	MA	NH	RI	VT
Unemployment Rate (percent)								
2000 Annual	4.0	2.8	2.2	3.4	2.6	2.8	4.1	2.9
2001 Annual	4.8	3.7	3.3	3.9	3.7	3.5	4.8	3.6
2002 Annual	5.8	4.9	4.3	4.4	5.3	4.7	5.1	3.7
2001 October	5.4	4.1	3.7	4.3	4.3	4.0	4.7	3.8
2002 October	5.8	5.0	4.5	4.5	5.5	5.0	5.4	3.7
2002 November	5.9	5.0	4.6	4.7	5.4	5.0	5.4	3.7
2002 December	6.0	5.1	4.7	4.8	5.5	5.0	5.5	3.7
2003 January	5.7	5.0	4.9	4.5	5.2	4.6	5.2	4.0
2003 February	5.8	5.0	5.0	4.6	5.4	3.9	5.2	4.0
2003 March	5.8	5.2	5.2	4.5	5.7	4.1	5.3	4.1
2003 April	6.0	5.2	5.3	4.8	5.5	4.0	5.3	4.2
2003 May	6.1	5.1	4.9	4.5	5.6	3.9	5.4	4.1
2003 June	6.4	5.1	4.9	4.5	5.6	3.9	5.7	4.1
2003 July	6.2	5.2	5.2	4.9	5.4	4.3	5.6	4.1
2003 August	6.1	5.3	5.0	4.9	5.8	4.4	5.3	3.9
2003 September	6.1	5.2	5.0	5.0	5.7	4.5	4.5	4.3
2003 October	6.0	5.1	4.9	5.1	5.6	4.3	4.4	4.0
Number Unemployed (thousands)								
2000 Annual	5,689	202.7	40.0	23.7	87.7	19.2	22.3	9.7
2001 Annual	6,842	272.2	57.4	27.0	124.9	24.7	26.0	12.2
2002 Annual	8,389	366.5	76.8	30.1	185.1	33.3	28.2	13.1
2001 October	7,758	307.9	65.7	29.3	146.3	27.7	25.9	12.9
2002 October	8,405	382.3	80.7	31.0	192.5	35.1	30.2	12.8
2002 November	8,637	382.3	82.2	32.1	189.6	35.1	30.4	12.9
2002 December	8,711	389.1	84.0	32.9	193.0	35.2	30.8	13.2
2003 January	8,302	375.5	86.3	31.7	180.3	33.2	29.7	14.2
2003 February	8,450	377.1	88.7	31.9	185.0	28.2	29.5	13.9
2003 March	8,445	395.6	93.5	31.2	196.8	29.1	30.3	14.6
2003 April	8,786	390.9	94.5	33.4	188.9	28.8	30.3	15.0
2003 May	8,998	383.4	87.1	31.2	192.4	27.5	30.9	14.3
2003 June	9,358	388.1	87.5	30.8	194.2	28.1	33.0	14.5
2003 July	9,062	392.2	92.5	34.1	187.7	31.0	32.3	14.6
2003 August	8,905	402.1	89.9	33.7	202.3	31.8	30.3	13.9
2003 September	8,973	396.5	89.7	34.9	198.6	32.2	25.8	15.3
2003 October	8,779	385.7	87.0	35.5	193.4	30.8	24.8	14.2
Civilian Labor Force (thousands)								
2000 Annual	142,588	7,358.3	1,783.5	688.2	3,317.8	691.8	543.1	333.9
2001 Annual	143,783	7,422.3	1,755.4	685.6	3,393.2	700.2	548.1	339.8
2002 Annual	144,875	7,556.2	1,772.9	686.2	3,486.4	705.6	556.4	348.7
2001 October	144,128	7,446.5	1,753.4	684.8	3,416.6	700.5	549.1	342.1
2002 October	145,393	7,597.6	1,781.3	687.1	3,508.4	709.3	560.8	350.7
2002 November	145,180	7,598.5	1,782.7	687.2	3,505.2	709.5	562.6	351.3
2002 December	145,150	7,596.5	1,783.3	687.7	3,505.7	706.5	561.5	351.9
2003 January	145,838	7,574.8	1,777.5	697.9	3,454.9	719.1	573.7	351.8
2003 February	145,857	7,577.2	1,785.2	700.0	3,453.1	716.4	571.9	350.6
2003 March	145,793	7,565.6	1,782.7	695.5	3,451.4	715.7	568.4	352.0
2003 April	146,473	7,570.9	1,785.2	697.5	3,451.2	714.7	569.2	353.2
2003 May	146,485	7,556.3	1,776.3	692.9	3,451.5	711.5	572.1	352.0
2003 June	147,096	7,562.6	1,781.4	690.8	3,448.6	714.2	574.4	353.2
2003 July	146,540	7,575.4	1,786.5	692.8	3,448.8	719.1	573.8	354.4
2003 August	146,530	7,577.4	1,782.0	694.4	3,459.6	718.2	570.1	353.2
2003 September	146,545	7,577.1	1,778.1	700.7	3,456.5	720.4	568.4	353.1
2003 October	146,793	7,574.6	1,780.6	696.5	3,455.7	720.4	567.4	353.9

Source: U.S. Bureau of Labor Statistics.

Average Weekly Initial Claims for Unemployment Insurance (seasonally adjusted)

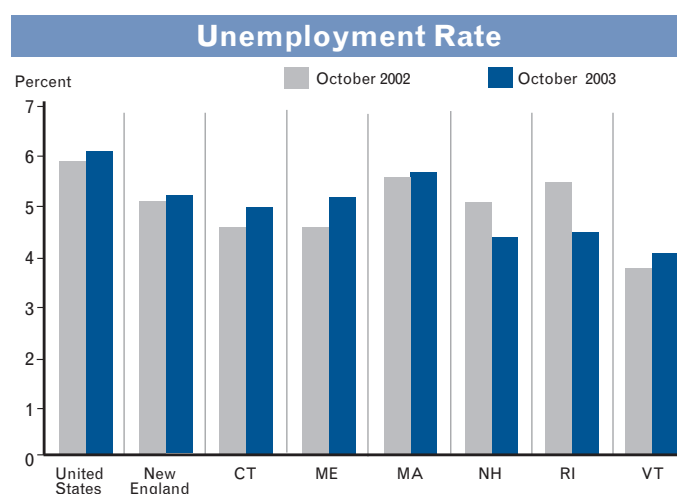
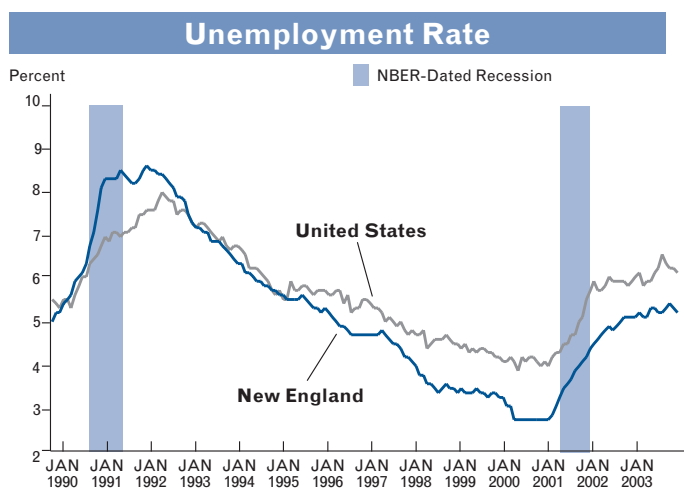
	United States	New England	CT	ME	MA	NH	RI	VT
2000 Annual	299,350	14,334	3,460	1,409	6,536	557	1,710	662
2001 Annual	406,792	20,719	5,250	1,605	9,731	1,264	1,954	915
2002 Annual	404,542	21,330	5,493	1,560	10,320	1,200	1,798	960
2001 October	485,800	25,202	5,996	1,693	12,537	1,583	2,248	1,146
2002 October	410,600	22,052	5,554	1,624	10,632	1,313	1,945	984
2002 November	389,000	21,011	5,200	1,556	10,235	1,090	1,918	1,012
2002 December	410,500	21,338	5,775	1,436	10,186	1,175	1,802	964
2003 January	386,700	20,114	4,864	1,684	9,859	1,227	1,723	757
2003 February	408,600	21,582	5,628	1,581	10,246	1,260	1,833	1,033
2003 March	423,300	21,153	5,409	1,407	10,150	1,369	1,712	1,107
2003 April	447,200	20,753	5,822	1,324	10,036	924	1,749	898
2003 May	431,600	21,247	4,786	1,549	10,883	1,044	1,837	1,148
2003 June	425,900	21,473	4,962	1,525	10,782	1,151	1,850	1,203
2003 July	398,500	18,460	4,451	1,375	9,586	735	1,514	798
2003 August	402,800	19,870	4,906	1,375	9,727	1,039	1,811	1,011
2003 September	404,800	22,085	4,796	1,454	10,102	1,591	1,860	2,281
2003 October	379,900	19,030	4,654	1,448	9,212	1,101	1,650	966

Source: United States: The Conference Board, Inc. New England and states: U.S. Department of Labor and Federal Reserve Bank of Boston.

Help Wanted Advertising (index 1987 = 100, seasonally adjusted)

	United States	New England	Boston	Hartford	Providence
2000 Annual	82	50	54	32	57
2001 Annual	58	38	41	22	44
2002 Annual	44	27	28	16	35
2001 October	46	32	35	17	37
2002 October	40	25	27	12	31
2002 November	40	24	26	12	31
2002 December	39	22	25	11	26
2003 January	41	27	29	17	32
2003 February	40	24	27	12	30
2003 March	39	25	28	9	33
2003 April	36	23	24	11	32
2003 May	35	23	25	12	31
2003 June	38	25	26	15	31
2003 July	38	22	23	11	34
2003 August	37	24	26	11	31
2003 September	37	23	NA	11	30
2003 October	37	22	NA	9	28

Source: The Conference Board, Inc.



Metro Areas: Nonagricultural Employment (thousands of jobs, seasonally adjusted)

	Connecticut							Maine	
	Bridgeport	Danbury	Hartford	New Haven- Meriden	New London- Norwich	Stamford- Norwalk	Waterbury	Lewiston- Auburn	Portland
2000 Annual	187.2	89.4	619.2	263.7	140.8	209.9	86.7	46.3	152.1
2001 Annual	186.4	88.4	613.6	259.7	142.8	205.4	84.9	46.0	156.2
2002 Annual	186.2	89.8	608.5	260.1	145.7	199.3	84.0	46.2	156.2
2001 October	186.0	88.7	610.5	259.3	145.3	203.6	84.1	45.9	156.4
2002 October	186.2	90.6	606.9	260.3	146.4	196.9	84.0	45.8	156.9
2002 November	185.8	90.7	606.4	259.7	146.1	196.7	83.5	45.9	156.7
2002 December	185.3	90.5	604.7	259.4	145.9	196.1	83.4	46.0	156.4
2003 January	186.4	91.2	609.3	262.6	146.8	198.5	85.2	45.8	157.2
2003 February	186.1	90.9	604.6	261.7	146.3	198.6	84.5	45.8	155.5
2003 March	186.7	91.3	603.4	261.1	146.0	199.0	84.3	45.6	155.1
2003 April	186.9	91.0	603.7	261.0	145.6	197.6	83.9	45.7	154.3
2003 May	186.4	90.7	604.4	260.4	146.4	196.5	82.6	46.0	156.4
2003 June	186.1	91.3	603.1	259.4	145.9	196.9	82.8	45.9	155.4
2003 July	185.9	92.2	600.5	260.2	146.0	197.2	82.6	46.1	156.4
2003 August	186.1	92.0	600.4	259.6	147.0	197.2	82.8	46.3	157.5
2003 September	186.3	92.0	599.5	259.5	147.6	194.4	81.8	46.0	157.4
2003 October	186.1	92.1	599.1	262.4	147.4	194.1	82.6	45.7	157.9

	Massachusetts									
	Barnstable- Yarmouth	Boston	Brockton	Fitchburg- Leominster	Lawrence	Lowell	New Bedford	Pittsfield	Springfield	Worcester
2000 Annual	63.2	2,040.3	100.0	53.0	164.8	129.9	66.3	42.5	261.5	234.3
2001 Annual	64.6	2,040.6	100.5	52.4	163.6	130.5	65.8	42.7	262.6	236.6
2002 Annual	65.1	1,980.4	100.8	51.7	157.2	126.1	65.2	42.8	259.6	231.3
2001 October	64.6	2,011.5	100.5	51.7	161.4	129.1	65.4	42.6	260.8	235.9
2002 October	65.2	1,971.2	101.1	51.7	155.9	125.8	64.8	42.7	261.1	230.5
2002 November	66.2	1,966.8	101.2	51.7	155.5	124.9	65.1	43.1	261.7	229.4
2002 December	65.6	1,958.8	101.4	51.8	155.5	124.8	65.0	43.0	260.2	227.2
2003 January	66.1	1,964.4	101.8	53.0	156.9	123.2	66.1	43.5	260.1	227.6
2003 February	66.3	1,957.6	101.8	53.0	156.0	123.8	65.3	43.2	259.2	225.8
2003 March	65.8	1,948.6	101.1	52.6	155.8	123.5	64.7	43.0	258.6	224.8
2003 April	64.9	1,950.9	100.5	52.1	154.8	122.9	64.4	42.8	257.4	223.7
2003 May	64.6	1,949.6	101.2	51.9	154.4	121.9	64.0	42.6	256.3	223.7
2003 June	63.7	1,942.5	100.7	52.3	153.5	121.4	63.8	42.6	254.8	222.5
2003 July	64.3	1,944.3	101.1	52.3	153.2	120.0	63.9	42.2	255.3	224.7
2003 August	64.5	1,938.1	100.9	52.7	152.7	120.0	63.0	42.0	256.7	225.2
2003 September	64.9	1,935.1	99.9	51.8	151.5	121.3	64.3	42.9	254.8	222.8
2003 October	64.9	1,934.1	100.0	51.6	151.5	121.8	64.4	43.2	256.6	221.5

	New Hampshire			Rhode Island		Vermont	
	Manchester	Nashua	Portsmouth- Rochester	Providence- Fall River-Warwick	Barre- Montpelier	Burlington	
2000 Annual	106.7	99.4	124.2	532.4	33.7	108.0	
2001 Annual	108.6	99.1	126.1	530.2	34.4	110.0	
2002 Annual	107.6	95.1	125.8	530.0	34.3	107.8	
2001 October	108.1	97.3	125.5	527.2	34.6	109.3	
2002 October	108.7	95.2	127.6	529.4	34.4	107.3	
2002 November	107.9	95.0	128.1	529.1	34.6	107.0	
2002 December	107.7	94.9	127.8	528.3	34.6	105.9	
2003 January	107.9	94.9	127.6	531.2	35.1	108.2	
2003 February	108.0	95.0	127.9	529.5	34.9	107.6	
2003 March	108.1	94.3	127.4	528.2	34.9	107.7	
2003 April	107.9	94.1	125.7	529.4	35.1	107.3	
2003 May	107.9	94.0	125.2	529.1	35.1	107.9	
2003 June	108.3	93.1	127.4	528.7	34.9	107.8	
2003 July	107.9	93.4	125.3	532.9	35.0	108.6	
2003 August	108.0	92.3	126.0	529.4	34.9	109.4	
2003 September	108.9	93.2	125.3	527.0	35.3	109.5	
2003 October	109.6	93.1	125.9	527.4	35.3	109.2	

Source: U.S. Bureau of Labor Statistics and Federal Reserve Bank of Boston.

Metro Areas: Unemployment Rate (thousands of jobs, seasonally adjusted)

	Connecticut							Maine		
	Bridgeport	Danbury	Hartford	New Haven- Meriden	New London- Norwich	Stamford- Norwalk	Waterbury	Bangor	Lewiston- Auburn	Portland
2000 Annual	2.7	1.5	2.3	2.3	2.3	1.4	2.8	2.4	3.2	1.8
2001 Annual	4.2	2.5	3.4	3.3	2.9	2.4	4.7	2.8	3.9	2.2
2002 Annual	5.4	3.3	4.5	4.1	3.8	3.2	6.0	2.9	4.1	2.7
2001 October	5.0	3.1	3.9	3.6	3.0	2.9	5.8	2.9	4.3	2.6
2002 October	5.7	3.4	5.1	4.5	4.2	3.3	6.5	2.9	4.3	2.8
2002 November	6.0	3.5	5.4	4.7	4.4	3.4	6.8	3.2	4.3	2.8
2002 December	6.1	3.6	5.5	4.8	4.4	3.4	7.2	3.3	4.5	2.8
2003 January	5.6	3.2	4.9	4.3	4.0	3.1	6.0	2.8	4.4	2.5
2003 February	5.6	3.1	5.0	4.5	4.1	2.9	6.1	2.9	4.0	2.5
2003 March	6.2	3.4	5.6	4.9	4.6	3.3	6.8	2.8	4.2	2.6
2003 April	6.8	3.7	6.1	5.1	4.9	3.7	6.9	3.1	4.4	2.7
2003 May	5.9	3.2	5.1	4.6	4.1	3.1	6.3	2.9	4.3	2.6
2003 June	5.6	3.0	4.8	4.4	4.0	3.0	6.4	3.0	4.1	2.5
2003 July	6.0	3.3	5.3	4.9	4.4	3.3	6.5	3.4	4.7	3.0
2003 August	6.2	3.5	5.4	5.0	4.5	3.4	6.7	3.3	4.9	3.0
2003 September	6.7	3.7	5.8	5.4	4.7	3.6	7.4	3.4	4.9	3.0
2003 October	6.3	3.6	5.5	5.1	4.4	3.3	7.1	3.7	5.0	3.1

	Massachusetts									
	Barnstable- Yarmouth	Boston	Brockton	Fitchburg- Leominster	Lawrence	Lowell	New Bedford	Pittsfield	Springfield	Worcester
2000 Annual	3.1	2.2	3.0	3.5	3.7	2.5	5.1	3.5	3.1	2.7
2001 Annual	3.6	3.3	4.0	5.0	5.4	4.2	6.0	4.1	3.9	4.0
2002 Annual	4.4	4.9	5.4	7.3	7.9	6.5	7.5	5.2	5.2	5.9
2001 October	3.8	4.0	4.4	5.8	6.2	5.3	6.2	4.2	4.1	4.7
2002 October	4.7	5.1	5.8	7.9	8.3	6.9	8.1	5.6	5.8	6.3
2002 November	4.2	5.1	5.8	7.8	8.1	6.9	8.0	5.5	5.7	6.3
2002 December	4.2	5.3	5.9	7.9	8.4	7.1	8.3	5.4	5.9	6.7
2003 January	3.8	4.5	4.8	6.6	7.3	6.0	6.6	4.6	4.9	5.6
2003 February	4.0	4.7	5.1	6.8	7.2	6.3	7.4	5.1	5.1	6.0
2003 March	4.4	5.0	5.7	7.4	7.6	6.7	7.8	5.1	5.5	6.3
2003 April	4.8	5.3	5.9	7.6	7.8	6.9	8.3	5.5	5.8	6.7
2003 May	4.8	5.1	5.7	7.7	7.7	6.9	8.1	5.4	5.7	6.6
2003 June	5.0	5.0	5.6	7.5	7.3	6.5	7.8	5.1	5.5	6.3
2003 July	4.8	4.8	5.3	7.1	7.4	6.3	7.2	5.3	5.4	6.0
2003 August	5.3	5.3	6.2	7.7	8.0	6.7	8.7	6.1	6.0	6.6
2003 September	5.2	5.1	6.1	7.7	8.0	6.4	8.1	5.4	6.1	6.4
2003 October	5.4	5.1	6.4	7.9	7.9	6.5	8.3	5.8	6.2	6.5

	New Hampshire			Rhode Island		Vermont
	Manchester	Nashua	Portsmouth- Rochester	Providence- Fall River-Warwick	Burlington	
2000 Annual	2.5	2.8	2.3	4.0	1.9	
2001 Annual	3.4	4.3	3.0	4.8	2.5	
2002 Annual	4.6	6.3	4.4	5.4	3.0	
2001 October	4.4	5.1	3.3	4.9	2.7	
2002 October	5.0	6.8	5.2	5.8	3.0	
2002 November	5.1	6.5	4.9	5.9	3.0	
2002 December	5.1	6.8	4.9	6.1	3.1	
2003 January	4.5	5.7	4.0	5.3	3.2	
2003 February	3.9	4.9	3.4	5.2	3.1	
2003 March	4.1	5.1	3.6	5.6	3.4	
2003 April	4.1	5.1	3.8	5.8	3.6	
2003 May	4.0	5.1	3.7	5.8	3.6	
2003 June	3.9	5.0	3.8	5.9	3.4	
2003 July	4.6	6.0	3.9	5.7	3.2	
2003 August	4.6	5.8	4.4	5.7	3.0	
2003 September	4.8	6.1	4.9	5.1	3.9	
2003 October	4.4	5.8	4.4	5.0	3.0	

Source: U.S. Bureau of Labor Statistics and Federal Reserve Bank of Boston.

Average Weekly Hours (manufacturing production workers, not seasonally adjusted)

	United States	New England	CT	ME	MA	NH	RI	VT
2001 Annual	40.3	40.5	41.7	39.8	40.3	40.6	39.4	39.7
2002 Annual	40.5	40.6	41.6	39.9	40.8	39.8	38.7	40.0
2001 October	40.2	40.4	42.3	39.9	39.8	40.3	38.7	40.1
2002 October	40.5	40.6	41.8	40.3	40.5	39.7	39.2	39.4
2002 November	40.6	40.6	41.9	40.3	40.5	40.0	38.7	40.0
2002 December	41.2	41.3	41.9	40.8	41.6	40.5	40.0	39.4
2003 January	40.1	40.4	41.6	40.0	40.3	39.9	38.3	39.8
2003 February	40.1	40.4	41.1	39.4	40.5	40.3	38.4	40.0
2003 March	40.3	40.8	41.3	40.0	41.0	40.5	39.3	40.0
2003 April	39.9	40.4	41.3	40.3	40.3	39.9	38.6	40.1
2003 May	40.2	40.4	41.2	39.8	40.4	39.8	39.6	40.1
2003 June	40.5	40.5	41.1	39.6	40.7	39.9	39.5	40.2
2003 July	39.6	40.0	40.4	39.9	40.2	39.3	38.3	39.9
2003 August	40.2	40.3	40.9	39.2	40.6	39.4	39.1	40.0
2003 September	40.8	41.0	41.9	40.6	41.2	39.7	40.0	40.1
2003 October	40.7	40.6	42.0	40.1	40.5	39.4	39.3	40.1

Source: U.S. Bureau of Labor Statistics and Federal Reserve Bank of Boston.

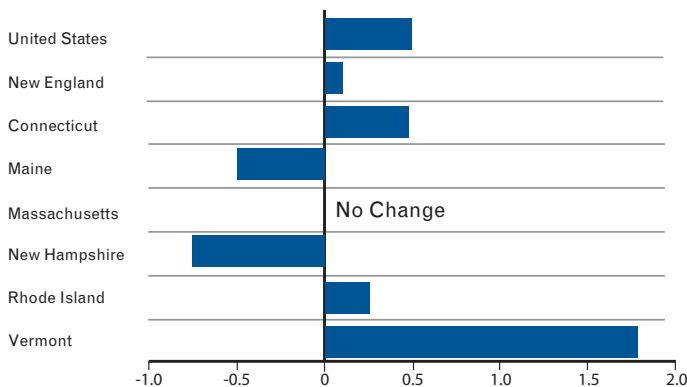
Average Hourly Earnings (manufacturing production workers, dollars, not seasonally adjusted)

	United States	New England	CT	ME	MA	NH	RI	VT
2001 Annual	14.76	15.34	16.42	14.72	15.76	13.98	12.68	14.18
2002 Annual	15.29	15.88	17.25	15.55	16.25	14.21	12.75	14.34
2001 October	14.88	15.53	16.68	14.93	16.04	13.95	12.63	14.20
2002 October	15.45	16.00	17.46	15.82	16.26	14.52	12.80	14.40
2002 November	15.51	16.03	17.37	15.85	16.38	14.57	12.81	14.38
2002 December	15.65	16.30	17.68	16.13	16.67	14.85	12.84	14.43
2003 January	15.61	16.12	17.26	16.11	16.48	14.92	12.78	14.50
2003 February	15.62	16.09	17.42	16.15	16.37	14.70	12.78	14.49
2003 March	15.62	16.21	17.73	16.05	16.44	14.87	12.82	14.50
2003 April	15.63	16.22	17.57	16.03	16.55	14.93	12.84	14.51
2003 May	15.64	16.23	17.68	16.23	16.49	14.86	12.87	14.52
2003 June	15.69	16.26	17.74	16.17	16.55	14.82	12.86	14.54
2003 July	15.69	16.30	17.88	16.23	16.50	14.90	12.87	14.54
2003 August	15.76	16.19	17.76	16.31	16.33	14.82	12.90	14.57
2003 September	15.87	16.26	17.94	16.28	16.37	14.91	12.88	14.57
2003 October	15.79	16.28	17.87	16.44	16.40	15.05	12.92	14.59

Source: U.S. Bureau of Labor Statistics and Federal Reserve Bank of Boston.

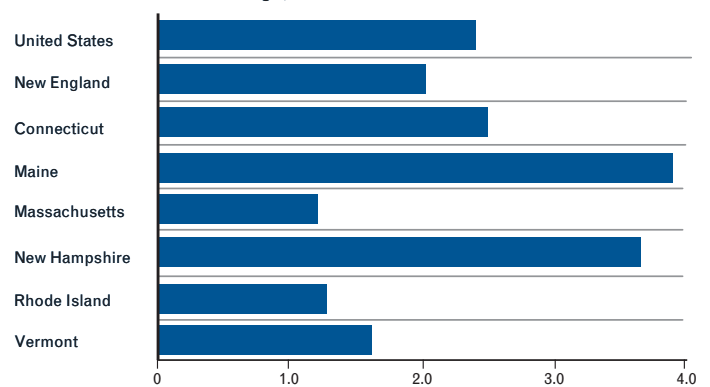
Average Weekly Hours

Manufacturing Production Workers
Percent Change, October 2002 to October 2003



Average Hourly Earnings

Manufacturing Production Workers
Percent Change, October 2002 to October 2003



Total Personal Income (by place of residence, millions of dollars, seasonally adjusted annual rate)

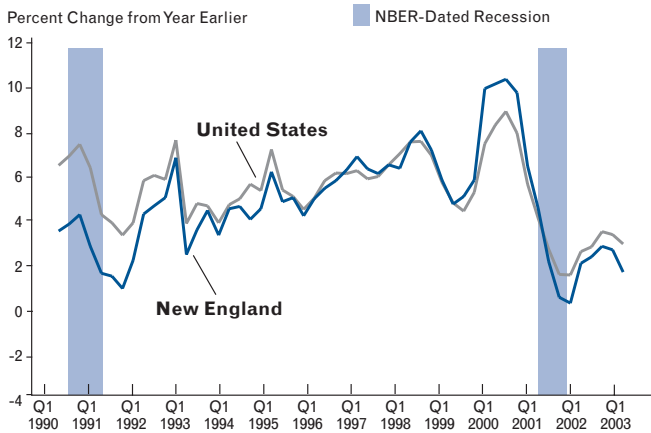
	United States	New England	CT	ME	MA	NH	RI	VT
2000 Annual	8,398,871	505,001	141,413	32,867	241,963	41,265	30,741	16,752
2001 Annual	8,677,490	521,283	145,548	34,492	248,778	42,779	32,061	17,627
2002 Annual	8,891,092	530,315	148,211	35,991	250,966	43,704	33,277	18,168
2001 Quarter II	8,669,238	521,469	145,899	34,394	248,883	42,752	31,919	17,622
2002 Quarter II	8,881,691	531,524	148,249	35,858	252,257	43,865	33,202	18,093
2002 Quarter III	8,927,635	532,247	148,840	36,141	251,714	43,847	33,467	18,238
2002 Quarter IV	8,982,839	533,241	148,486	36,483	252,127	44,047	33,659	18,439
2003 Quarter I	9,053,499	537,534	150,562	37,040	252,613	44,381	34,391	18,547
2003 Quarter II	9,129,313	539,718	151,432	37,358	253,436	44,519	34,239	18,734

Wage and Salary Disbursements* (by place of work, millions of dollars, seasonally adjusted annual rate)

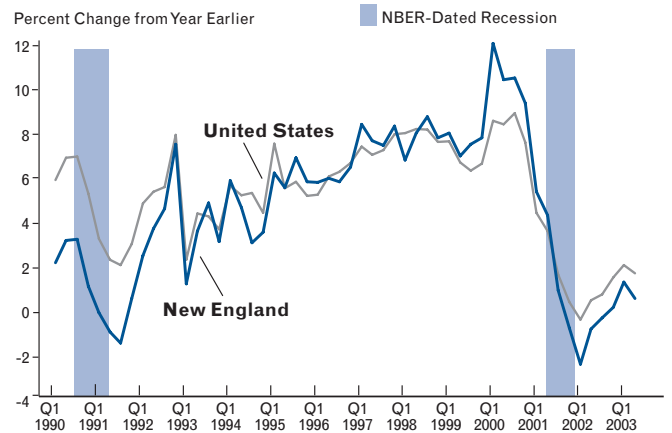
	United States	New England	CT	ME	MA	NH	RI	VT
2000 Annual	4,834,254	294,610	79,105	17,217	151,330	21,914	16,080	8,965
2001 Annual	4,947,350	301,307	81,161	17,975	153,638	22,531	16,593	9,410
2002 Annual	4,968,353	298,305	80,268	18,501	150,121	22,752	17,115	9,549
2001 Quarter II	4,953,552	302,221	81,607	17,940	154,176	22,538	16,518	9,442
2002 Quarter II	4,969,358	299,298	80,185	18,420	151,282	22,882	17,012	9,517
2002 Quarter III	4,979,106	298,652	80,534	18,560	149,959	22,824	17,223	9,552
2002 Quarter IV	4,994,874	297,912	79,716	18,673	149,742	22,868	17,272	9,641
2003 Quarter I	5,024,162	300,722	81,511	18,996	149,552	23,118	17,884	9,661
2003 Quarter II	5,046,212	300,515	81,678	19,087	149,356	23,103	17,544	9,747

* Wage and salary disbursements are a component of total personal income.
Source: U.S. Bureau of Economic Analysis.

Personal Income



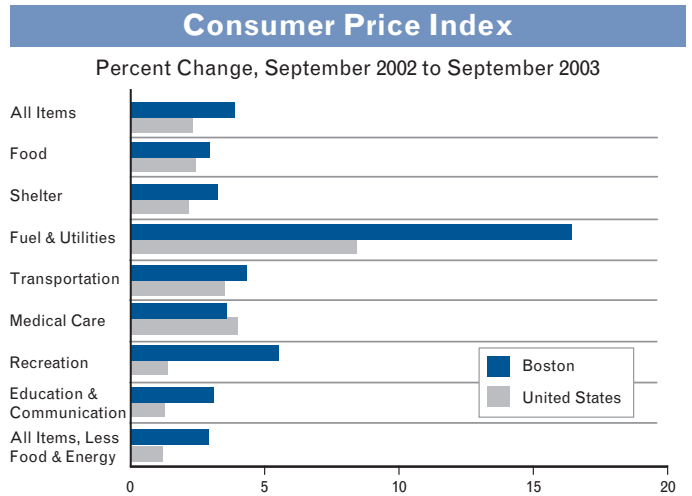
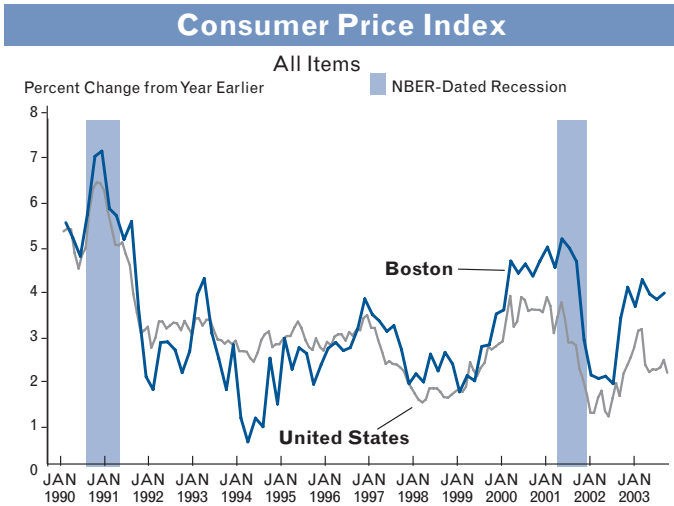
Wage and Salary Disbursements



Consumer Price Index (index 1982-1984 = 100, except the Recreation and Education & Communication categories, where index December 1997 = 100, not seasonally adjusted)

	All Items	Food	Shelter	Fuel & Utilities	Transportation	Medical Care	Recreation	Education & Communication	All Items, Less Food & Energy
United States									
2000 Annual	172.2	167.8	193.4	137.9	153.3	260.8	103.3	102.5	181.3
2001 Annual	177.1	173.1	200.6	150.2	154.3	272.8	104.9	105.2	186.1
2002 Annual	179.9	176.2	208.1	143.6	152.9	285.6	106.2	107.9	190.5
2001 October	177.7	174.9	202.4	144.6	152.3	275.9	105.3	107.1	187.6
2002 October	181.3	176.5	209.7	144.4	154.9	289.2	106.4	109.4	191.8
2002 November	181.3	176.8	209.6	143.6	155.2	290.5	106.4	109.3	191.8
2002 December	180.9	177.3	209.5	144.2	154.2	291.3	106.5	109.2	191.4
2003 January	181.7	177.5	210.9	146.1	155.5	292.6	106.9	109.7	191.8
2003 February	183.1	178.3	211.6	148.3	158.9	293.7	107.2	109.7	192.5
2003 March	184.2	178.6	212.1	154.5	161.0	294.2	107.4	109.4	193.0
2003 April	183.8	178.4	212.1	153.1	159.3	294.6	107.4	109.0	193.1
2003 May	183.5	178.8	212.8	153.7	157.2	295.5	107.6	108.6	193.2
2003 June	183.7	179.6	213.0	159.1	156.8	296.3	107.6	108.5	193.0
2003 July	183.9	179.7	213.8	159.4	156.8	297.6	107.7	108.9	193.2
2003 August	184.6	180.4	214.3	159.2	158.3	298.4	107.7	110.1	193.5
2003 September	185.2	180.7	213.8	159.6	159.4	299.2	107.7	110.9	193.6
2003 October	185.0	181.7	214.7	155.0	157.1	299.9	107.6	110.9	194.3
Boston*									
2000 Annual	183.3	175.1	211.2	130.9	152.0	347.9	104.0	102.7	197.0
2001 Annual	191.4	182.2	224.6	152.6	152.4	367.5	105.3	107.0	204.8
2002 Annual	196.3	185.5	241.1	133.9	149.7	382.8	106.8	106.8	213.0
2001 September	192.7	183.9	227.4	151.4	151.1	369.0	105.1	107.9	206.7
2002 September	199.1	186.0	246.5	130.3	150.2	385.4	106.7	110.1	216.5
2002 November	200.4	185.6	248.2	138.2	151.2	391.0	107.9	110.3	217.7
2003 January	199.8	187.5	246.3	148.6	151.8	391.8	108.7	109.6	215.5
2003 March	202.8	186.9	247.3	166.3	156.3	392.5	108.8	110.1	217.6
2003 May	202.3	189.3	248.2	151.1	152.9	395.8	112.8	108.5	218.2
2003 July	203.0	188.2	250.4	152.9	152.9	397.7	113.3	108.1	219.3
2003 September	206.8	191.5	254.5	151.7	156.7	399.2	112.6	113.5	222.8

* The Boston CPI is published every other month and covers parts of Connecticut, Maine, Massachusetts, and New Hampshire.
Source: U.S. Bureau of Labor Statistics.

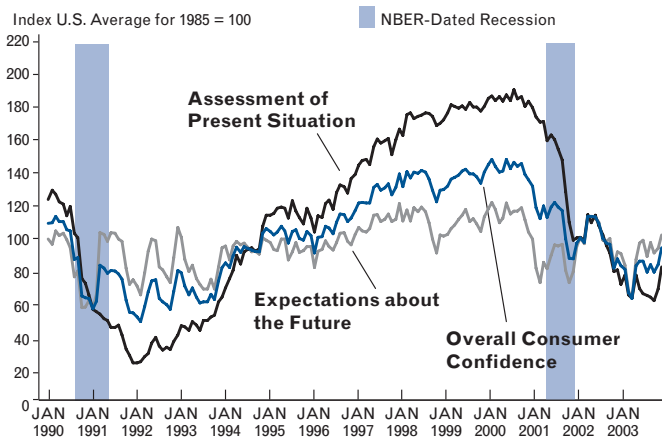


Consumer Confidence Index (index U.S. average for 1985 = 100, not seasonally adjusted except for United States)

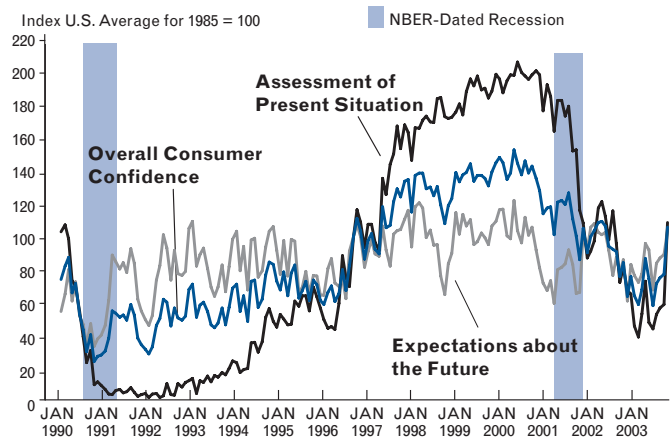
	Overall Consumer Confidence			Assessment of Present Situation			Expectations about the Future		
	United States	New England	MA	United States	New England	MA	United States	New England	MA
2000 Annual	139.0	138.9	133	181.0	194.9	155	110.9	102.0	117
2001 Annual	106.6	110.0	99	141.7	161.4	116	83.2	75.7	88
2002 Annual	96.8	91.5	97	94.6	94.8	68	98.0	89.4	115
2001 November	84.9	84.5	—	96.2	114.2	—	77.3	64.7	—
2002 November	84.9	82.5	—	78.3	79.9	—	89.3	84.3	—
2002 December	80.7	62.2	—	69.6	66.0	—	88.1	59.6	—
2003 January	78.8	74.4	63	75.3	63.9	28	81.1	81.5	86
2003 February	64.8	62.8	—	63.5	44.5	—	65.7	75.1	—
2003 March	61.4	57.6	—	61.4	38.0	—	61.4	70.8	—
2003 April	81.0	66.4	77	75.2	52.0	31	84.8	76.0	108
2003 May	83.6	85.1	—	67.3	71.4	—	94.5	94.3	—
2003 June	83.5	72.7	—	64.2	46.5	—	96.4	90.2	—
2003 July	77.0	56.8	77	63.0	42.8	41	86.3	66.2	101
2003 August	81.7	69.9	—	62.0	51.6	—	94.9	82.2	—
2003 September	77.0	73.4	—	59.7	55.5	—	88.5	85.3	—
2003 October	81.7	75.5	82	67.0	57.4	36	91.5	87.6	112
2003 November	91.7	104.1	—	80.1	106.9	—	99.4	102.3	—

Source: United States and New England: The Conference Board, Inc. Massachusetts: Mass Insight/MassDevelopment Project. Consumer confidence data for New England are collected by the Conference Board in conjunction with the Conference Board's overall U.S. confidence series, and are evaluated on the same basis. Statistics for both the United States and New England are indexed to the U.S. average for 1985. Mass Insight adjusts the Massachusetts figures to be generally comparable to the Conference Board figures. Consumers' assessments of their present situation and expectations about the future are components of the overall consumer confidence index.

Consumer Confidence – United States



Consumer Confidence – New England



Repeat-Sales Home Price Index (index 1987:Q1=100, not seasonally adjusted)

	United States	New England	CT	ME	MA	NH	RI	VT
2000 Annual	175.30	145.44	128.27	156.93	151.23	126.97	146.30	157.19
2001 Annual	189.47	162.31	140.23	173.51	170.07	142.60	163.40	169.07
2002 Annual	202.90	181.43	154.38	191.69	190.72	159.34	188.41	181.64
2001 Quarter III	191.33	165.26	142.07	176.31	173.23	145.58	167.07	171.29
2002 Quarter III	205.25	184.64	156.97	195.22	194.05	162.13	192.85	183.68
2002 Quarter IV	208.49	188.81	160.17	198.91	198.47	165.78	199.28	184.76
2003 Quarter I	211.19	192.19	161.98	202.87	202.31	168.03	204.30	186.76
2003 Quarter II	213.73	195.25	164.49	205.18	205.56	170.43	209.31	189.55
2003 Quarter III	216.25	198.57	167.84	210.43	208.40	173.81	215.53	193.24

Connecticut

Massachusetts

	Bridgeport	Danbury	Hartford	New Haven-Meriden	Stamford-Norwalk	Barnstable-Yarmouth	Boston	Brockton
2000 Annual	115.42	120.64	130.10	115.52	137.55	133.73	159.96	134.07
2001 Annual	127.46	131.96	140.86	126.65	150.72	153.34	179.91	151.82
2002 Annual	141.36	145.17	153.52	139.65	165.47	177.64	200.86	173.93
2001 Quarter III	129.66	134.29	142.23	128.51	152.57	156.97	183.29	154.74
2002 Quarter III	143.30	148.34	156.24	142.15	167.54	182.19	204.11	178.07
2002 Quarter IV	147.28	149.53	158.88	144.84	171.20	186.55	208.51	182.69
2003 Quarter I	149.21	150.41	160.30	147.04	172.94	192.17	212.24	187.49
2003 Quarter II	151.95	153.42	162.54	149.95	174.60	195.91	215.51	192.51
2003 Quarter III	155.51	156.35	165.86	153.27	177.82	197.96	218.11	195.33

Massachusetts (continued)

New Hampshire

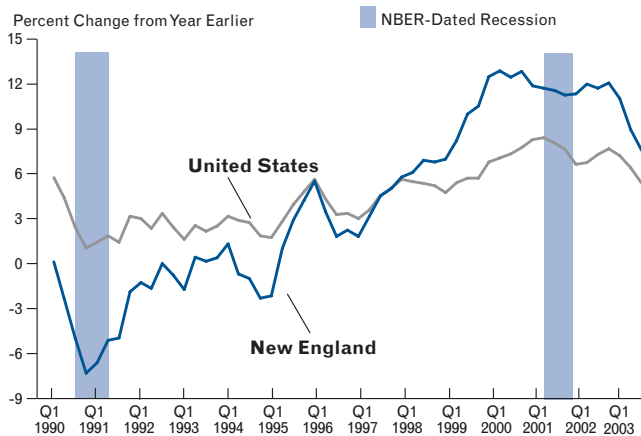
Rhode Island

Vermont

	Lawrence	Lowell	Springfield	Worcester	Manchester	Nashua	Providence-Fall River-Warwick	Burlington
2000 Annual	140.41	142.31	130.67	132.10	124.03	121.49	145.16	159.04
2001 Annual	159.02	160.56	141.12	148.45	140.71	137.16	162.45	171.64
2002 Annual	178.53	178.11	154.48	167.74	158.79	153.50	186.96	184.41
2001 Quarter III	162.00	164.48	142.80	151.33	143.57	140.86	165.96	174.19
2002 Quarter III	181.24	181.20	156.82	170.86	162.12	155.99	191.22	186.58
2002 Quarter IV	185.65	184.06	160.75	175.07	166.00	159.57	197.47	186.94
2003 Quarter I	188.52	187.27	163.14	178.48	168.03	161.91	202.38	188.97
2003 Quarter II	191.88	189.74	165.15	181.78	170.29	163.38	207.50	191.81
2003 Quarter III	194.73	192.06	168.67	184.25	174.54	165.98	213.44	195.23

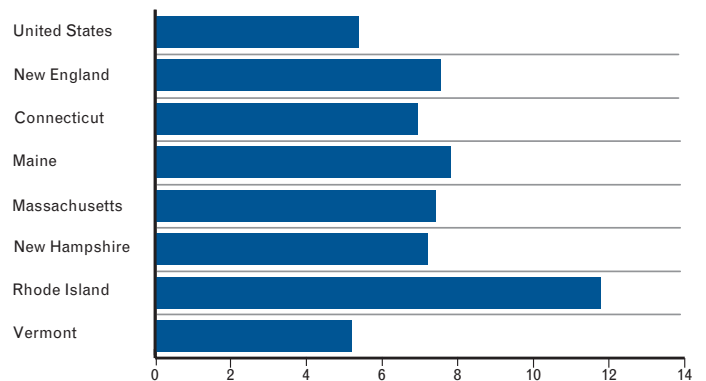
Source: Fannie Mae and Freddie Mac. Data are based on a sample of single-family homes financed by conventional mortgages. City names represent metropolitan areas.

Repeat-Sales Home Price Index



Repeat-Sales Home Price Index

Percent Change, Third Quarter 2002 to Third Quarter 2003



Existing Home Sales (single-family, condominium, and cooperative, thousands of units, seasonally adjusted annual rate)

	United States	New England	CT	ME	MA	NH	RI	VT
2000 Annual	5,832	242.0	49.5	37.4	88.7	40.3	19.5	6.7
2001 Annual	6,026	239.6	49.5	36.4	87.5	39.9	20.0	6.4
2002 Annual	6,421	244.5	51.5	38.7	91.9	38.8	19.7	7.3
2001 Quarter III	6,065	247.9	50.3	37.8	92.5	40.7	20.0	6.6
2002 Quarter III	6,233	243.1	50.6	37.8	88.4	39.8	18.6	7.9
2002 Quarter IV	6,593	249.1	51.9	37.8	91.8	39.9	20.2	7.5
2003 Quarter I	6,695	NA	46.5	41.3	90.8	NA	19.8	NA
2003 Quarter II	6,687	NA	45.2	37.8	87.3	NA	18.6	NA
2003 Quarter III	7,398	NA	58.2	42.8	103.9	NA	21.4	NA

Source: National Association of Realtors.

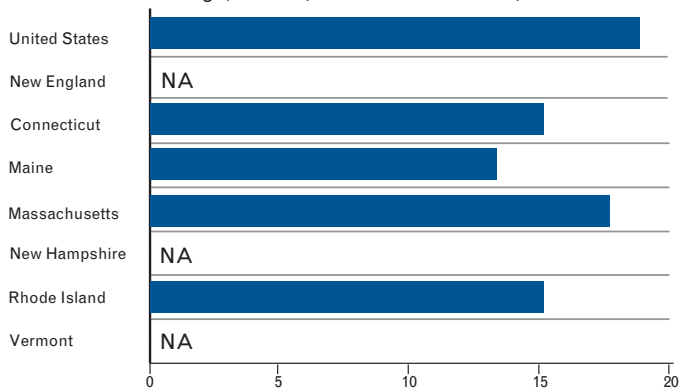
Median Sales Price of Existing Homes (single-family, dollars, not seasonally adjusted)

	Connecticut			Maine	Massachusetts			Rhode Island
	United States	Hartford	New Haven-Meriden	Portland	Boston	Springfield	Worcester	Providence
2000 Annual	138,375	159,375	150,600	134,150	329,700	119,225	130,975	137,300
2001 Annual	146,350	163,025	167,475	156,925	354,750	126,325	149,000	156,325
2002 Annual	157,650	176,125	191,425	178,725	397,200	139,450	186,725	191,200
2001 Quarter III	150,900	172,600	174,500	165,000	367,300	129,400	163,600	163,800
2002 Quarter III	160,800	185,900	199,200	184,000	415,800	139,700	195,000	203,300
2002 Quarter IV	161,000	183,500	202,000	195,000	386,300	148,200	190,000	206,100
2003 Quarter I	161,200	182,400	211,400	185,000	413,500	142,400	187,000	213,200
2003 Quarter II	168,400	198,500	213,500	187,300	409,100	150,700	205,000	228,900
2003 Quarter III	177,000	210,900	229,400	197,400	432,700	159,100	215,000	241,400

Source: National Association of Realtors. City names represent metropolitan areas.

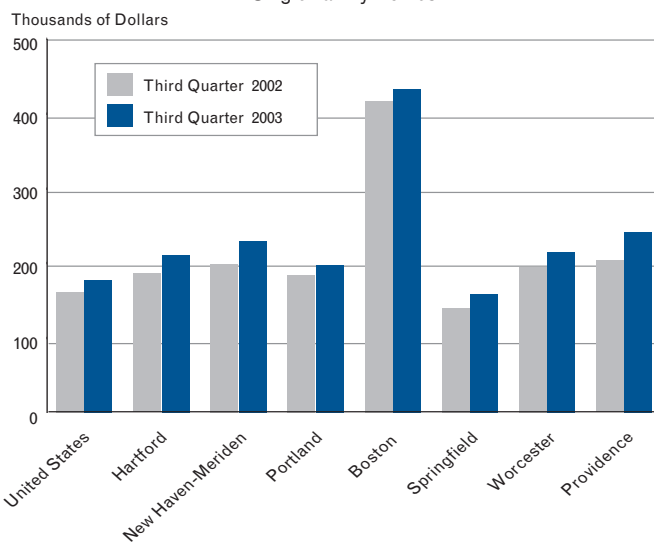
Existing Home Sales

Single Family, Condominium, and Cooperative
Percent Change, Third Quarter 2002 to Third Quarter 2003



Median Sales Price of Existing Homes

Single Family Homes



Housing Permits Authorized (housing units, seasonally adjusted)

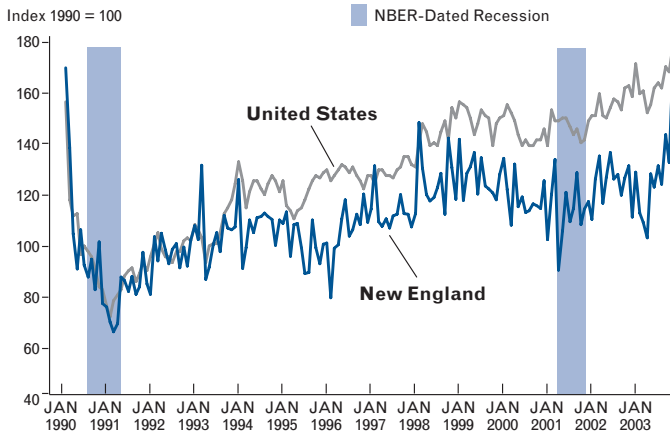
Total Permits	United States	New England	CT	ME	MA	NH	RI	VT
2000 Annual	133,000	3,642	781	481	1,442	526	222	189
2001 Annual	137,000	3,580	789	482	1,395	512	201	201
2002 Annual	146,000	3,947	808	580	1,432	668	215	245
2001 October	131,000	3,575	806	494	1,313	552	188	221
2002 October	151,000	4,110	890	611	1,403	644	312	250
2002 November	147,000	3,474	681	559	1,227	559	193	255
2002 December	159,000	4,037	823	621	1,479	670	188	256
2003 January	148,000	3,526	666	630	1,164	750	112	204
2003 February	149,000	3,410	654	530	1,395	460	142	231
2003 March	141,000	3,218	565	509	1,172	587	183	202
2003 April	144,000	4,010	715	601	1,558	677	190	270
2003 May	150,000	3,850	852	533	1,402	650	198	216
2003 June	152,000	4,113	1,054	490	1,431	739	189	211
2003 July	150,000	3,887	798	562	1,432	684	196	215
2003 August	158,000	4,500	852	616	1,943	663	208	219
2003 September	156,000	4,155	930	680	1,521	553	260	211
2003 October	165,000	5,289	1,414	630	1,875	728	366	275

Single Unit Permits

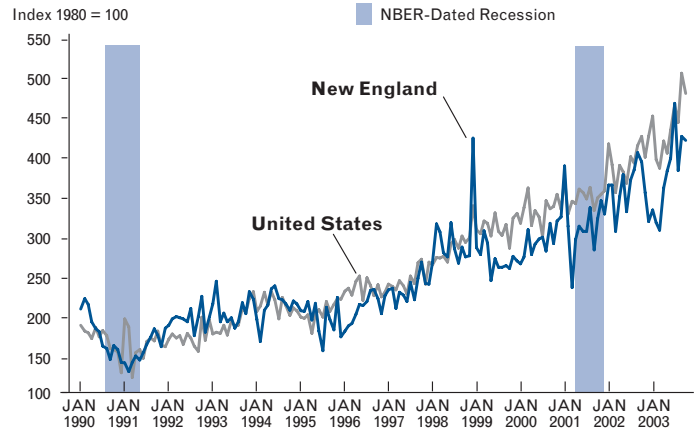
2000 Annual	100,000	3,113	679	438	1,152	486	189	170
2001 Annual	103,000	3,014	662	444	1,081	468	184	176
2002 Annual	111,000	3,260	718	507	1,115	543	184	192
2001 October	99,000	3,045	675	455	1,103	446	173	193
2002 October	116,000	3,339	735	548	1,122	551	179	203
2002 November	115,000	3,096	670	487	1,084	462	176	217
2002 December	118,000	3,117	697	522	1,104	429	156	209
2003 January	142,000	3,146	547	592	1,025	620	130	232
2003 February	110,000	2,580	568	489	773	420	115	215
2003 March	109,000	2,718	575	472	855	482	157	177
2003 April	111,000	3,194	649	535	1,039	563	148	260
2003 May	112,000	3,045	674	489	1,002	533	168	179
2003 June	119,000	3,117	715	494	1,047	528	144	189
2003 July	120,000	3,286	757	532	1,129	531	159	178
2003 August	124,000	2,967	673	537	936	488	161	172
2003 September	124,000	3,315	688	628	1,121	486	220	172
2003 October	128,000	3,576	785	530	1,255	523	229	253

Source: U.S. Census Bureau.

Total Housing Permits Authorized



Residential Construction Contracts



Value of Construction Contracts (index 1980=100, not seasonally adjusted, except residential)

Total Contracts	United States	New England	CT	ME	MA	NH	RI	VT
2000 Annual	319.4	403.1	358.5	319.5	443.9	536.4	333.9	238.5
2001 Annual	334.8	351.8	297.7	311.4	380.8	450.2	338.6	270.7
2002 Annual	338.6	369.3	330.8	343.4	364.5	515.5	407.5	374.9
2001 October	355.1	320.0	259.9	312.2	321.2	556.0	314.1	236.6
2002 October	347.8	417.5	404.9	322.7	409.3	630.2	338.6	485.0
2002 November	291.3	336.0	196.0	276.6	416.9	379.2	322.0	332.4
2002 December	264.7	245.7	272.2	196.3	197.8	412.2	431.1	163.4
2003 January	299.5	220.5	179.3	269.8	216.8	268.2	312.0	183.8
2003 February	280.8	235.4	163.3	218.4	242.4	462.9	284.6	121.4
2003 March	327.4	280.0	283.8	328.1	244.6	436.5	268.1	261.9
2003 April	375.3	332.2	275.2	594.6	264.0	565.4	269.8	479.9
2003 May	377.3	403.6	325.2	541.0	404.8	522.9	308.3	449.5
2003 June	427.5	513.8	565.2	518.5	466.2	600.5	321.3	807.4
2003 July	397.8	425.1	305.6	407.2	453.7	628.7	400.5	494.0
2003 August	364.3	404.8	459.6	313.1	375.6	398.5	658.6	283.0
2003 September	357.2	335.3	342.9	438.5	290.4	468.2	378.0	252.9
2003 October	379.1	344.1	367.8	334.0	325.9	410.3	382.3	253.1
Residential Contracts								
2000 Annual	328.2	291.3	292.7	351.6	267.4	407.8	287.1	191.3
2001 Annual	345.9	310.4	295.4	350.8	296.4	414.7	311.4	244.6
2002 Annual	392.0	355.9	353.5	441.3	311.6	541.7	327.3	305.5
2001 October	344.5	318.3	315.0	354.2	304.7	419.2	292.2	237.5
2002 October	421.4	389.6	408.2	427.1	363.5	517.2	276.5	353.4
2002 November	395.0	350.9	324.8	413.2	298.7	544.4	549.5	281.6
2002 December	421.0	314.5	371.3	514.8	223.7	465.7	262.3	301.4
2003 January	447.0	329.1	315.2	493.3	278.4	516.8	289.0	261.0
2003 February	392.5	313.1	269.9	418.9	263.5	437.7	585.1	274.6
2003 March	381.5	303.5	276.2	468.3	246.3	536.3	265.2	264.9
2003 April	415.8	356.8	337.3	513.7	291.7	539.1	516.4	270.7
2003 May	400.2	378.1	354.9	445.9	369.5	432.6	338.4	381.1
2003 June	429.7	394.0	499.9	472.4	306.6	576.1	275.3	350.1
2003 July	461.3	462.7	344.5	488.7	477.6	567.7	761.3	335.6
2003 August	438.8	378.4	352.6	455.2	369.1	499.7	334.5	270.9
2003 September	500.6	421.5	423.1	543.8	393.6	489.7	416.5	338.6
2003 October	475.3	416.5	439.7	496.3	357.6	550.9	582.4	299.9
Nonresidential Building Contracts								
2000 Annual	330.6	526.0	473.2	316.4	626.9	594.4	340.7	351.8
2001 Annual	321.9	443.2	301.0	304.9	536.3	649.6	510.3	328.1
2002 Annual	293.5	417.9	337.6	281.3	449.4	630.1	454.4	685.1
2001 October	332.2	393.5	219.9	266.8	444.6	983.3	527.5	251.4
2002 October	304.5	557.2	435.2	255.9	598.5	1,100.6	458.6	1,168.3
2002 November	271.9	351.2	141.3	202.8	518.1	387.0	72.4	801.3
2002 December	218.7	285.8	308.7	53.8	219.3	727.5	747.3	97.5
2003 January	255.1	242.2	137.2	171.9	290.7	239.3	521.4	326.1
2003 February	226.1	293.4	158.4	155.0	337.3	923.4	251.0	120.2
2003 March	265.9	321.2	344.9	248.3	314.2	369.0	281.8	401.0
2003 April	309.4	336.0	246.4	747.6	280.5	385.4	150.1	967.2
2003 May	312.5	505.2	352.0	575.4	556.4	766.0	424.9	593.3
2003 June	373.7	706.3	644.2	424.7	771.5	679.5	458.5	1,807.9
2003 July	331.3	439.3	327.7	212.9	543.8	725.5	139.1	594.8
2003 August	300.7	481.4	674.6	186.9	454.1	328.2	476.4	268.6
2003 September	257.4	283.8	357.0	447.5	175.4	492.1	304.1	177.0
2003 October	294.8	358.0	385.8	229.0	379.7	344.0	299.9	297.2

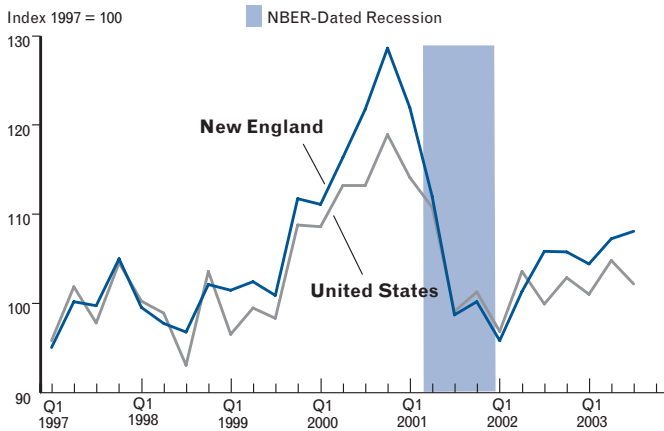
Table continued

Value of Construction Contracts, continued (index 1980=100, not seasonally adjusted)

	United States	New England	CT	ME	MA	NH	RI	VT
Nonbuilding Contracts								
2000 Annual	284.5	417.0	231.4	264.3	489.1	759.1	387.0	239.7
2001 Annual	334.3	287.7	300.1	249.1	307.5	274.5	196.7	270.9
2002 Annual	310.3	317.7	269.2	272.7	330.2	321.4	455.4	251.8
2001 October	394.8	173.4	226.7	251.7	139.7	235.2	91.0	174.8
2002 October	247.6	206.1	308.9	172.8	177.8	175.6	273.6	53.5
2002 November	206.2	299.2	95.1	176.6	473.2	82.8	244.4	54.6
2002 December	193.1	125.2	95.1	58.4	123.7	100.1	317.0	126.7
2003 January	245.3	132.5	147.4	360.4	87.5	67.5	188.5	117.5
2003 February	253.4	155.3	78.4	209.9	177.7	147.5	211.5	73.3
2003 March	263.9	184.3	150.6	346.2	118.3	415.9	278.2	168.2
2003 April	303.9	224.9	103.2	411.0	188.9	705.1	63.8	237.6
2003 May	312.5	180.0	92.3	425.0	171.5	253.0	81.2	224.5
2003 June	382.1	335.6	413.6	505.1	279.7	241.4	151.1	723.4
2003 July	313.7	263.0	40.8	399.2	264.6	495.5	264.0	572.3
2003 August	257.8	220.3	98.9	141.2	143.6	147.1	1,197.2	223.7
2003 September	294.9	277.5	183.3	215.9	310.4	307.4	431.3	158.1
2003 October	296.7	141.1	146.7	132.0	155.9	61.8	187.8	34.3

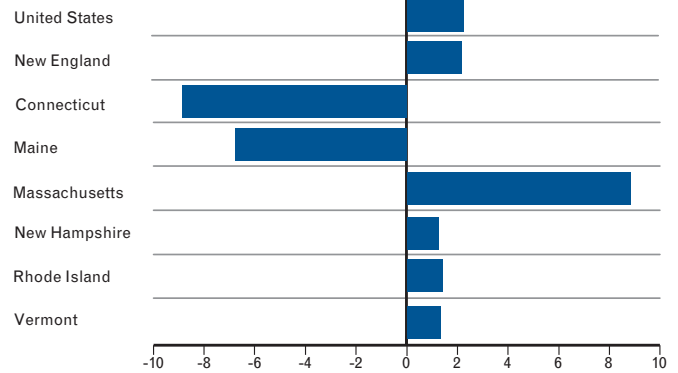
Source: Construction contracts figures are proprietary data from McGraw-Hill Construction Dodge, and are reproduced here with permission. Monthly updates to the indexes routinely incorporate up to three years of revised contract value estimates.

Total Merchandise Exports



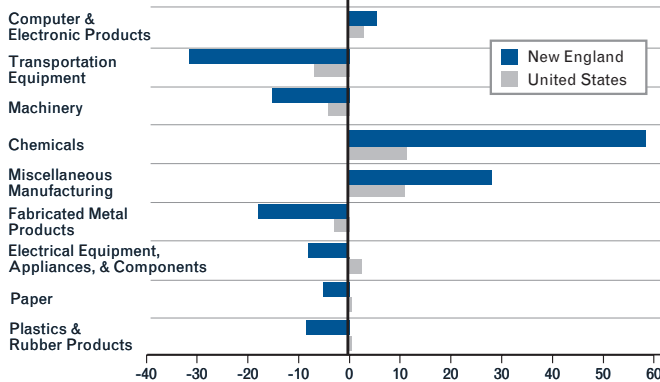
Exports by State

Dollar Value of Merchandise Exports
Percent Change, Third Quarter 2002 to Third Quarter 2003



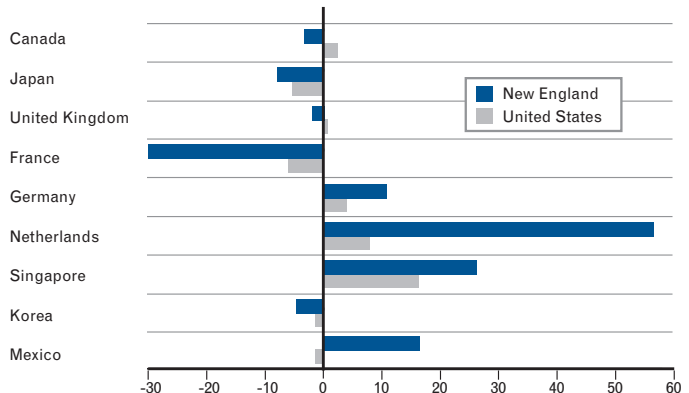
Exports by Industry

Dollar Value of Merchandise Exports
Percent Change, Third Quarter 2002 to Third Quarter 2003



Exports by Country of Destination

Dollar Value of Merchandise Exports
Percent Change, Third Quarter 2002 to Third Quarter 2003



Total Merchandise Exports (millions of dollars, not seasonally adjusted)

	United States	New England	CT	ME	MA	NH	RI	VT
2000 Annual	195,105	9,499	2,012	445	5,129	593	296	1,024
2001 Annual	182,756	8,603	2,153	453	4,373	600	317	708
2002 Annual	173,314	8,125	2,078	493	4,177	466	280	630
2001 Quarter III	170,303	7,848	1,978	460	3,913	549	319	629
2002 Quarter III	171,795	8,413	2,101	583	4,397	438	269	626
2002 Quarter IV	176,856	8,410	2,106	507	4,423	453	289	632
2003 Quarter I	173,642	8,305	1,993	564	4,443	454	279	572
2003 Quarter II	180,220	8,528	2,104	483	4,548	481	326	586
2003 Quarter III	175,594	8,593	1,914	543	4,784	444	273	635

Source: Merchandise export data are prepared by the Massachusetts Institute for Social and Economic Research (MISER) using data compiled by the U.S. Census Bureau, Foreign Trade Division, and are reproduced here with permission.

Merchandise Exports by Industry* (millions of dollars, not seasonally adjusted)

United States	Computer & Electronic Products	Transportation Equipment	Machinery	Chemicals	Miscellaneous Manufacturing	Fabricated Metal Products	Electrical Equip., Appliances, & Components	Paper	Plastics & Rubber Products
2000 Annual	49,059	32,045	22,461	20,065	6,113	5,728	6,869	3,995	4,429
2001 Annual	41,336	32,558	20,378	19,759	6,445	5,175	6,231	3,624	4,127
2002 Annual	36,462	32,724	18,736	20,126	6,665	5,047	5,712	3,527	4,042
2001 Quarter III	37,649	29,728	19,049	19,051	6,128	5,027	5,895	3,466	4,023
2002 Quarter III	36,350	31,399	18,866	20,374	6,554	5,118	5,745	3,581	4,097
2002 Quarter IV	36,911	32,639	18,716	20,845	6,888	5,140	5,768	3,550	4,025
2003 Quarter I	35,180	31,308	17,989	22,024	6,939	5,012	5,475	3,529	3,994
2003 Quarter II	35,726	34,109	19,003	22,794	7,191	5,294	5,738	3,641	4,261
2003 Quarter III	37,408	29,226	18,081	22,663	7,285	4,966	5,889	3,598	4,114

New England

2000 Annual	4,029	1,021	1,076	620	432	314	341	268	175
2001 Annual	3,115	1,181	963	608	482	296	316	245	180
2002 Annual	2,740	1,184	785	777	467	324	297	257	185
2001 Quarter III	2,712	1,103	887	547	441	283	281	233	183
2002 Quarter III	2,839	1,225	822	789	463	330	300	269	205
2002 Quarter IV	2,854	1,125	781	960	495	341	298	254	178
2003 Quarter I	2,888	1,015	792	898	495	322	289	264	175
2003 Quarter II	2,840	1,027	809	1,066	573	272	295	263	185
2003 Quarter III	2,993	838	697	1,250	594	270	276	255	188

Merchandise Exports by Country of Destination* (millions of dollars, not seasonally adjusted)

United States	Canada	Japan	United Kingdom	France	Germany	Netherlands	Singapore	Korea	Mexico
2000 Annual	44,107	16,314	10,395	5,063	7,311	5,493	4,454	6,975	27,930
2001 Annual	40,931	14,410	10,199	4,974	7,528	4,881	4,423	5,549	25,377
2002 Annual	40,200	12,860	8,313	4,755	6,657	4,584	4,055	5,649	24,383
2001 Quarter III	37,941	13,228	9,534	4,269	7,117	4,194	4,333	5,535	24,474
2002 Quarter III	38,861	13,433	8,021	4,043	6,468	4,375	4,041	5,776	24,791
2002 Quarter IV	40,591	12,652	8,047	5,087	7,014	4,456	3,910	5,829	25,202
2003 Quarter I	41,173	12,547	8,717	4,406	7,382	4,924	4,060	6,050	22,702
2003 Quarter II	44,587	13,422	8,679	4,539	7,224	5,084	3,804	5,877	23,887
2003 Quarter III	39,786	12,717	8,073	3,799	6,731	4,721	4,704	5,695	24,424

New England

2000 Annual	2,395	797	740	597	561	398	280	290	346
2001 Annual	1,939	777	755	613	591	291	284	240	275
2002 Annual	1,734	663	615	563	520	366	330	319	291
2001 Quarter III	1,818	696	743	498	519	243	280	231	268
2002 Quarter III	1,772	711	579	503	504	411	341	321	308
2002 Quarter IV	1,632	722	631	535	596	436	302	352	310
2003 Quarter I	1,628	640	651	489	591	473	302	325	333
2003 Quarter II	1,663	661	549	528	721	522	337	294	330
2003 Quarter III	1,714	654	567	353	558	643	430	306	359

*The industries and countries shown in these tables had the largest shares of total New England merchandise exports in 2002. Industries are defined by the North American Industry Classification System (NAICS).

State Merchandise Exports by Industry* (millions of dollars, not seasonally adjusted)

	Connecticut			Maine			Massachusetts		
	Transportation Equipment	Computer & Electronic Products	Machinery	Computer & Electronic Products	Paper	Forestry & Logging	Computer & Electronic Products	Chemicals	Machinery
2000 Annual	792	226	251	83	93	44	2,554	400	63
2001 Annual	997	201	225	87	89	47	2,030	383	511
2002 Annual	1,025	190	167	134	96	46	1,756	567	447
2001 Quarter III	913	171	208	89	76	41	1,763	308	454
2002 Quarter III	1,097	177	167	158	113	46	1,856	572	487
2002 Quarter IV	983	196	171	133	87	50	1,858	720	430
2003 Quarter I	814	189	182	158	97	63	1,936	626	434
2003 Quarter II	854	198	188	148	105	34	1,852	722	426
2003 Quarter III	717	202	178	133	94	44	1,972	986	369

	New Hampshire			Rhode Island			Vermont		
	Computer & Electronic Products	Machinery	Electrical Equip., Appliances, & Components	Computer & Electronic Products	Waste & Scrap	Miscellaneous Manufacturing	Computer & Electronic Products	Machinery	Transportation Equipment
2000 Annual	250	102	30	71	29	41	846	27	26
2001 Annual	221	117	51	66	35	41	509	28	30
2002 Annual	142	96	25	51	36	35	466	26	23
2001 Quarter III	197	108	24	58	42	40	434	25	31
2002 Quarter III	124	93	23	45	19	37	479	25	14
2002 Quarter IV	130	103	22	57	55	35	481	33	14
2003 Quarter I	137	93	24	60	32	33	409	33	17
2003 Quarter II	147	98	25	70	36	38	425	25	22
2003 Quarter III	135	84	19	64	25	35	487	26	17

State Merchandise Exports by Country of Destination* (millions of dollars, not seasonally adjusted)

	Connecticut			Maine			Massachusetts		
	Canada	France	Germany	Canada	Singapore	Malaysia	Canada	Japan	United Kingdom
2000 Annual	458	278	140	210	9	33	897	546	483
2001 Annual	432	354	169	212	26	33	711	491	463
2002 Annual	373	295	164	198	62	42	677	400	395
2001 Quarter III	410	323	156	256	28	25	675	425	463
2002 Quarter III	388	286	131	267	79	49	643	439	369
2002 Quarter IV	326	246	193	198	53	39	648	428	405
2003 Quarter I	347	276	193	184	53	49	672	388	371
2003 Quarter II	348	363	265	158	57	57	671	412	325
2003 Quarter III	328	199	146	253	47	57	630	389	365

	New Hampshire			Rhode Island			Vermont		
	Canada	United Kingdom	Germany	Canada	Singapore	Mexico	Canada	Korea	Taiwan
2000 Annual	186	53	49	94	11	27	551	35	68
2001 Annual	148	91	36	88	15	17	347	47	48
2002 Annual	129	41	32	94	20	19	264	83	81
2001 Quarter III	142	85	29	86	14	18	249	58	62
2002 Quarter III	116	37	41	88	20	20	271	97	75
2002 Quarter IV	133	38	28	94	10	25	233	93	109
2003 Quarter I	124	37	29	97	23	16	205	77	113
2003 Quarter II	131	38	27	111	28	17	244	64	77
2003 Quarter III	120	38	23	101	23	18	282	47	73

*The industries and countries shown for each state in these tables had the largest shares of that state's merchandise exports in 2002. Industries are defined by the North American Industry Classification System (NAICS).

Electricity Sales (millions of kilowatt-hours, not seasonally adjusted)

	United States	New England	CT	ME	MA	NH	RI	VT
Residential Electricity Sales								
2000 Annual	99,448	3,655	970	536	1,417	302	260	171
2001 Annual	100,081	3,533	998	326	1,499	316	225	169
2002 Annual	105,644	3,662	1,040	336	1,562	316	236	173
2001 July	119,654	3,709	1,072	328	1,577	328	239	165
2002 July	133,517	4,268	1,318	347	1,800	333	301	169
2002 August	133,997	4,488	1,275	359	1,970	385	312	187
2002 September	115,071	3,586	957	304	1,605	311	243	166
2002 October	94,277	3,203	876	302	1,364	305	199	157
2002 November	88,903	3,472	998	340	1,432	314	217	171
2002 December	108,977	4,376	1,268	399	1,807	441	254	207
2003 January	125,307	4,665	1,330	431	1,952	439	290	223
2003 February	112,021	4,086	1,174	365	1,737	374	232	204
2003 March	100,154	4,031	1,122	363	1,730	366	264	186
2003 April	84,102	3,437	964	317	1,462	313	218	163
2003 May	88,340	3,166	839	307	1,372	293	202	153
2003 June	100,912	3,280	923	294	1,382	306	221	154
2003 July	130,254	4,361	1,233	376	1,882	390	299	181
Commercial Electricity Sales								
2000 Annual	86,495	3,990	994	339	1,902	302	294	159
2001 Annual	90,586	4,079	1,037	317	1,971	326	267	161
2002 Annual	92,701	4,151	1,051	317	2,022	323	276	163
2001 July	102,474	4,348	1,126	336	2,085	352	279	170
2002 July	107,299	4,687	1,194	354	2,271	349	344	175
2002 August	108,279	4,886	1,241	363	2,404	387	309	182
2002 September	100,225	4,264	1,052	330	2,074	356	284	168
2002 October	95,466	4,175	1,073	312	2,003	338	288	161
2002 November	85,425	3,955	959	302	1,957	310	267	160
2002 December	87,655	4,252	1,052	337	2,048	372	277	166
2003 January	93,712	4,520	1,117	335	2,247	363	287	171
2003 February	84,886	4,024	993	301	1,985	330	255	160
2003 March	86,482	4,225	1,028	318	2,092	336	289	162
2003 April	83,470	3,892	954	289	1,931	316	255	147
2003 May	89,391	4,027	997	304	1,998	318	261	149
2003 June	94,911	4,200	1,069	326	2,035	334	284	152
2003 July	106,961	4,869	1,203	347	2,417	393	333	176
Industrial Electricity Sales								
2000 Annual	89,236	2,455	484	575	896	214	148	137
2001 Annual	82,840	2,163	463	396	848	206	115	134
2002 Annual	82,434	2,006	447	296	847	173	111	133
2001 July	83,267	2,141	428	383	860	203	134	133
2002 July	87,631	2,083	486	267	917	161	115	137
2002 August	87,756	2,179	497	297	914	208	123	140
2002 September	85,268	2,011	444	300	842	193	108	124
2002 October	84,832	2,030	462	297	835	190	116	130
2002 November	79,983	1,962	443	278	803	185	118	135
2002 December	78,446	1,922	399	295	792	190	107	139
2003 January	80,351	1,977	449	268	845	180	103	132
2003 February	77,901	1,783	377	265	739	182	96	124
2003 March	78,914	1,877	416	280	779	174	104	124
2003 April	80,561	1,814	396	289	729	177	100	123
2003 May	82,495	1,940	426	262	834	186	107	125
2003 June	84,296	2,044	472	309	823	202	110	128
2003 July	86,064	2,071	459	287	871	197	125	132

Source: U.S. Department of Energy.

State Tax Collections

(thousands of dollars, not seasonally adjusted)

Total Taxes	United States	New England	CT	ME	MA	NH	RI	VT
2000 Annual	137,980,691	8,425,805	2,380,546	663,287	4,166,588	310,830	534,957	369,598
2001 Annual	138,670,402	8,689,736	2,457,189	669,560	4,183,313	456,227	550,284	373,164
2002 Annual	133,379,340	8,092,090	2,303,760	667,964	3,706,118	480,955	554,526	378,767
2001 Quarter II	164,910,108	1,657,795	3,704,995	958,355	5,063,429	824,498	657,867	448,651
2002 Quarter II	149,127,418	9,346,900	3,156,621	940,687	3,788,741	393,230	642,827	424,794
2002 Quarter III	126,905,687	7,044,295	1,553,440	533,881	3,743,459	324,914	513,460	375,141
2002 Quarter IV	127,958,209	7,799,864	2,298,788	659,008	3,520,583	395,591	556,879	369,015
2003 Quarter I	129,990,051	8,402,940	2,244,290	547,759	3,870,747	818,793	530,908	390,443
2003 Quarter II	150,421,009	NA	3,310,832	956,531	NA	387,297	NA	471,324
Individual Income Taxes								
2000 Annual	50,782,238	3,947,450	966,879	276,514	2,359,688	16,258	216,685	111,426
2001 Annual	51,555,273	4,116,818	1,065,054	293,532	2,403,079	19,740	226,029	109,385
2002 Annual	45,386,980	3,411,308	895,239	272,596	1,911,842	16,853	208,861	105,917
2001 Quarter II	67,702,241	5,795,120	1,699,710	450,033	3,136,927	45,791	301,117	161,542
2002 Quarter II	52,261,254	4,004,612	1,269,055	399,701	1,924,319	36,114	250,341	125,082
2002 Quarter III	42,883,083	3,036,284	586,408	214,360	1,927,078	11,147	193,267	104,024
2002 Quarter IV	43,999,700	3,324,313	860,360	283,098	1,855,706	4,095	217,861	103,193
2003 Quarter I	41,402,523	3,112,926	794,561	191,260	1,883,806	12,279	159,273	71,747
2003 Quarter II	50,006,053	NA	1,397,741	386,108	NA	27,597	NA	132,379
General Sales and Gross Receipts Taxes								
2000 Annual	44,525,742	2,135,229	790,235	209,705	915,404	*	166,486	53,400
2001 Annual	44,766,549	2,152,024	778,948	203,512	938,955	*	176,988	53,623
2002 Annual	45,067,911	2,145,343	760,195	211,174	931,500	*	188,526	53,948
2001 Quarter II	46,426,085	2,539,680	1,094,046	265,896	954,085	*	171,633	54,020
2002 Quarter II	46,966,686	2,498,248	1,047,046	278,109	931,387	*	187,506	54,200
2002 Quarter III	43,316,047	1,820,928	438,168	167,700	954,608	*	205,613	54,839
2002 Quarter IV	45,180,716	2,171,928	796,330	212,007	921,673	*	186,269	55,649
2003 Quarter I	43,992,863	2,074,338	747,394	191,508	895,550	*	180,751	59,135
2003 Quarter II	49,048,653	NA	1,038,594	286,281	NA	*	NA	131,342
Corporation Net Income Taxes								
2000 Annual	8,480,198	584,808	108,569	29,076	322,571	92,189	20,368	12,036
2001 Annual	7,030,804	450,672	70,896	22,311	245,160	89,153	12,857	10,295
2002 Annual	6,808,750	434,602	70,576	19,796	228,973	96,402	10,767	8,087
2001 Quarter II	11,052,279	668,395	170,440	34,949	300,744	116,338	29,945	15,979
2002 Quarter II	9,919,427	513,505	110,985	30,707	216,426	119,526	22,497	13,364
2002 Quarter III	6,240,074	392,710	50,648	20,573	229,192	77,509	7,664	7,124
2002 Quarter IV	4,775,327	280,497	61,416	18,809	109,905	87,967	3,029	5,429
2003 Quarter I	6,492,337	660,095	109,704	13,745	404,858	89,472	29,075	13,241
2003 Quarter II	9,777,460	NA	122,916	38,062	NA	141,214	NA	15,847
Motor Fuel Taxes								
2000 Annual	7,541,766	404,579	115,618	46,939	164,505	29,093	32,732	15,692
2001 Annual	7,853,464	393,684	103,287	47,091	165,434	30,060	28,734	19,079
2002 Annual	8,051,983	416,116	110,159	48,536	168,215	30,493	37,172	21,540
2001 Quarter II	8,139,555	448,907	139,304	61,768	172,013	27,860	31,960	16,002
2002 Quarter II	8,416,094	491,358	148,457	64,193	173,502	29,706	54,509	20,991
2002 Quarter III	8,114,211	374,710	74,668	35,199	176,801	32,537	36,342	19,163
2002 Quarter IV	8,041,234	426,080	116,463	49,445	169,866	31,409	34,502	24,395
2003 Quarter I	7,606,723	400,873	106,567	45,163	162,925	30,842	32,942	22,434
2003 Quarter II	8,316,020	NA	152,632	64,665	NA	30,826	NA	22,164
Tobacco and Alcohol Taxes								
2000 Annual	3,085,389	201,284	41,532	27,662	83,895	22,216	17,141	8,838
2001 Annual	3,124,863	212,596	41,195	30,985	85,057	24,734	20,089	10,536
2002 Annual	3,457,364	269,844	62,760	35,298	108,854	24,714	25,115	13,103
2001 Quarter II	3,334,643	226,256	53,152	30,042	90,897	24,833	18,121	9,211
2002 Quarter II	3,381,205	274,178	92,191	36,469	89,379	21,620	25,295	9,224
2002 Quarter III	3,689,864	304,885	55,740	35,773	141,069	27,929	27,156	17,218
2002 Quarter IV	3,783,486	299,992	67,903	34,676	128,246	27,360	26,401	15,406
2003 Quarter I	3,614,135	277,124	62,648	32,842	120,842	22,093	24,466	14,233
2003 Quarter II	4,058,785	NA	110,017	35,350	NA	28,692	NA	56,928

* The state of New Hampshire does not levy a general sales tax.
Source: U.S. Census Bureau. Data refer to calendar, not fiscal, years.

Sources on the Internet

Many of the data series used to compile *Indicators* can be obtained from the web sites of the original data source. Additional and related data series not published in *Indicators* may be available at these sites, and data can often be obtained in advance of publication in *Indicators*. Key sites are listed below.

**Employment, Unemployment, Hours, Earnings,
Consumer Price Index**

U.S. Bureau of Labor Statistics
<http://stats.bls.gov>

Initial Claims for Unemployment Insurance

U.S. Department of Labor, Employment
and Training Administration
<http://workforcesecurity.doleta.gov>

Help Wanted, Consumer Confidence

The Conference Board, Inc.
<http://www.conference-board.org>

Massachusetts Consumer Confidence

Mass Insight/MassDevelopment Project
<http://www.massinsight.com>

Personal Income, Wage and Salary Disbursements

U.S. Bureau of Economic Analysis
<http://www.bea.doc.gov>

Electricity Sales

U.S. Energy Information Administration
<http://www.eia.doe.gov>

Construction Contracts

McGraw-Hill Construction Dodge
<http://dodge.construction.com/Analytics/Default.asp>

Housing Permits, State Tax Collections

U.S. Census Bureau
<http://www.census.gov>

Merchandise Exports

Massachusetts Institute for Social and
Economic Research
<http://www.misertrade.org>

Repeat-Sales Home Prices

Fannie Mae and Freddie Mac
<http://www.freddiemac.com>

**Existing Home Sales, Median Sales Price
of Existing Homes**

National Association of Realtors
<http://www.realtor.org>

Indicators Web Site

Federal Reserve Bank of Boston
<http://www.bos.frb.org/economic/nee/nee.htm>



Previous Articles

PUBLISHED IN NEW ENGLAND ECONOMIC INDICATORS

“Definitions and Sources of *Indicators* Data”
October 2003

“The Economic Performance of the New England States in 2002:
An Overview”
July 2003

“Comments on Changes to Regional Employment Data:
Benchmark Revision and NAICS Conversion”
May/June 2003

“The Fiscal Condition of the New England States: An Update”
January 2003

“The Performance of Business Services in the National and
Regional Employment Recoveries”
March 1996

Indicators New England Economic

**Federal Reserve Bank of Boston
Research Department
600 Atlantic Avenue
Boston, MA 02210**

change service requested

**PRSR STD
U.S. Postage Paid
Dallas, TX
Permit Number
1478**