

What are the consequences of global banking for the international transmission of shocks? A quantitative analysis*

José L. Fillat[†] Stefania Garetto[‡] Arthur V. Smith[§]
Federal Reserve Bank of Boston Boston U., CEPR, and NBER Boston U.

October 29, 2019

Abstract

The global financial crisis of 2008 was followed by a wave of regulatory reforms that affected large banks, especially those with a global presence. These reforms were reactive to the crisis. In this paper we propose a structural model of global banking that can be used proactively to perform counterfactual analysis on the effects of alternative regulatory policies. The structure of the model mimics the US regulatory framework and highlights the organizational choices that banks face when entering a foreign market: branching versus subsidiarization. When calibrated to match moments from a sample of European banks, the model is able to replicate the response of the US banking sector to the European sovereign debt crisis. Our counterfactual analysis suggests that pervasive subsidiarization, higher capital requirements, or an ad hoc monetary policy intervention would have mitigated the effects of the sovereign debt crisis on US lending, but would have had limited effects in more severe scenarios.

Keywords: global banks, banking regulation, shock transmission.

JEL Classification: F12, F23, F36, G21

*We are grateful to Andrew Bernard, Nicola Cetorelli, Jean-Edouard Colliard, Enrique Martínez-García, Linda Goldberg, Victoria Ivashina, Andrei Levchenko, Friederike Niepmann, Joe Peek, Kathryn Russ, Jeremy Stein, and seminar participants at many institutions for helpful comments. We also thank Martin Götz for invaluable input at the initial stages of this project. Andrew Barton, Kovid Puria, Marco Sammon, Lalit Sethia, and Samuel Tugendhaft provided excellent research assistance.

[†]Federal Reserve Bank of Boston, 600 Atlantic Avenue, Boston MA 02210. E-mail: Jose.Fillat@bos.frb.org. The views expressed in this paper are those of the authors and do not necessarily reflect those of the Federal Reserve Bank of Boston or Federal Reserve System.

[‡]Department of Economics, Boston University, 270 Bay State Road, Boston, MA 02215. E-mail: garetto@bu.edu.

[§]Department of Economics, Boston University, 270 Bay State Road, Boston, MA 02215. E-mail: avsmith@bu.edu.

1 Introduction

The 2008 global financial crisis and—more recently—the European sovereign debt crisis have spurred debates among academics and policymakers about the regulation of large, systemically important banks. Most of the institutions under scrutiny are multinational banks, with operations in multiple countries, raising concerns about contagion and shock transmission. Arguably, regulatory reforms should be not only reactive to crises, but also designed ex-ante to reduce the likelihood and limit the severity of such crises.

In this paper, we inform the design of multinational banking regulation by developing a quantitative structural model of global banking and by using it to evaluate the effects of counterfactual policies. We focus our analysis on global banks because they are often the largest players in the countries where they operate: as noted by Goldberg (2009), the sheer size of foreign banking institutions and their involvement with the real economy makes them important vehicles for the global transmission of shocks. For example, the Japanese banking crisis in the early 1990s had a substantial effect on credit supply in the United States, as many US branches and subsidiaries of Japanese banks shrank their US operations, and in some cases closed down, following the shock in their home country. The European sovereign debt crisis also had rippling effects in the US credit markets, mostly due to the fragility of foreign branches’ funding, as our empirical analysis shows below. Several empirical studies have explored the role of multinational banks in the transmission of shocks across countries.¹ Our paper contributes to this literature in two ways. First, while prior contributions have overlooked the importance of a bank’s mode of operations, our model provides a microfoundation for the bank’s decision of whether and how to enter a foreign market—through branches or subsidiaries. We find that this differentiation is of first-order importance to understanding the effects of financial crises. Second, while most of the existing work has been conducted using reduced-form analysis, our quantitative model enables us to study the consequences of potential regulatory changes via counterfactual analysis.

The model we develop is designed to describe the institutional details of the banking industry and to be consistent with a number of stylized facts from US bank-level data. For this reason, our analysis focuses on the two most prominent forms of foreign banking institutions in the United States: branches and subsidiaries. Current US bank regulations treat foreign-owned branches and subsidiaries differently, so the activities that a branch and a subsidiary are allowed to undertake

¹See most notably Cetorelli and Goldberg (2011, 2012a,b).

differ: for example, while subsidiaries are separately capitalized, branches do not raise independent equity and are subject to capital requirements at the parent bank level. While subsidiaries can accept all types of deposits, branches can accept only uninsured wholesale deposits. Finally, unlike subsidiaries, branches can freely transfer funds to and from their parent.²

The distinction between branches and subsidiaries is important, both for the selection of different banks in these two organizational modes, and for their different responses to shocks. We show that the European parents of global banking conglomerates with affiliates in the United States tend to be larger than those European banks without operations in the United States. Moreover, the parent banking organizations of foreign subsidiaries are systematically larger than the parent banks of foreign branches. At the affiliate level, subsidiaries also are larger than branches. These size rankings hold when evaluated in terms of both loans and deposits. To study the extent of shock transmission, we analyze the response of US-based affiliates of European banks to the European sovereign debt crisis. We find that, in the wake of the crisis, US branches of exposed European banks experienced a flight in their uninsured deposits, while deposits at subsidiaries (both insured and uninsured) grew. Because the shortage of funding that branches experienced was only partially compensated by intrafirm transfers of funds from their parents, US branches of exposed European banks experienced a decrease in their loans. At the same time, loans issued by exposed US subsidiaries increased. These facts inform the construction of the model.

We model the bank's problem as a monopolistically competitive extension of the Monti-Klein model (see Klein 1971, and Monti 1972), augmented to include institutional features like capital requirements and deposit insurance. The model explicitly distinguishes among foreign banking institutions by their mode of operations, which is endogenous and responds to differences in the regulatory environment and in bank management efficiency. This feature allows us to assess whether the mode of operations matters for the severity of shocks' transmission across countries. The model features the channels of adjustment that we document in the data, and its simple structure is amenable to quantification. We calibrate the model to match a set of cross-sectional moments of the US foreign banking sector and show that our calibrated economy generates responses to shocks that are consistent with the actual responses of multinational banks to the European sovereign debt crisis. We then use the model to perform counterfactual exercises that shed light on the quantitative implications of current and counterfactual banking regulations for the transmission of

²In the remainder of this paper, as an analogy to the literature on multinational corporations, we refer to a parent bank, or just parent, as the home-based banking organization. Branches are owned by a bank, while subsidiaries may be owned by a bank or directly by a bank holding company.

shocks across countries.

Our baseline quantitative exercise consists of an analysis of the European sovereign debt crisis, which started with Greek sovereign debt repayment problems. We take this as a shock that is exogenous to the US banking system. In the model, the crisis is isomorphic to a sudden decline in the probability of loan repayment in Europe. This decline reduces European banks' profits and equity accumulation, lowers their equity to risk-weighted assets ratio, and tightens the banks' buffer on capital requirements. To examine the effect of this change in the balance sheets of European banks on the operations of their US-based affiliates, we model deposit supply following the empirical evidence reported in Egan, Hortacsu, and Matvos (2017): on the one hand, a tightening in global conglomerates' capital reduces the supply of wholesale deposits, which represents a funding shock for US branches. Faced with solvency problems in their foreign branches, European parents use their internal capital market to support profitable lending in their US branches. Nonetheless, US branches decrease their total loans. On the other hand, foreign subsidiaries' balance sheets are more isolated from the shock that affects their parents. As a result, there is no direct effect on their loans and deposits.

The model is conceptually simple, yet rich in its depiction of the regulatory framework. Given its success at replicating the observed response of foreign banking organizations (henceforth, FBOs) to the European sovereign debt crisis, we use the model to simulate the response to the crisis under counterfactual policy scenarios. The results of our exercises suggest that increased capital requirements, the elimination of branching, or an ad hoc monetary policy intervention would have mitigated the negative effects of the crisis on US aggregate lending. Conversely, the elimination of subsidiarization would have caused an even more severe decline in banking activity in the United States.

Our model also has interesting implications about the possible response of FBOs to "large" shocks to their parents. More precisely, frictions to the internal capital market between parents and subsidiaries imply that, following a "large" shock, a parent bank may decide to repatriate funds by shutting down its foreign subsidiaries. The parents of branches do not have the same incentives, as they can freely repatriate funds through their internal capital market. As an external validation of this mechanism, we show that subsidiaries are more likely than branches to exit a foreign market, and that exits are more common in periods when the parents' equity positions are declining.³ The

³Subsidiary exits are typically executed as asset sales to domestic banks, not necessarily as closures or liquidations. These large asset sales are typically subject to frictions which are a function of the size and timing of the sale.

possibility of subsidiaries' exit also implies that the conclusions of our policy counterfactuals may depend on the size of the shock that banks face.

Taken together, the results illustrate the consequences that different organizational forms have for the transmission of financial shocks across countries. Subsidiarization isolates a global bank's balance sheets by location; hence, it minimizes cross-country contagion. However, by not having access to a fluid internal capital market within the conglomerate, subsidiaries do not provide an effective instrument to dampen the global effect of shocks, resulting in possible reorganizations and exits.⁴ Conversely, parent-branch conglomerates can more easily take advantage of their internal capital market, smooth the intensity of shocks across countries, and reduce their global impact.

This paper is related to a large empirical literature that studies the role of global banks as vehicles of shock transmission across countries. In a seminal contribution, Peek and Rosengren (2000) have shown the role that US-based branches of Japanese banks played in transmitting the effect of the Japanese banking crisis to the United States. In a similar spirit, Cetorelli and Goldberg (2011) document a decline in lending by foreign affiliates of global banks in emerging economies in the wake of the 2007–2009 financial crisis. Cetorelli and Goldberg (2012a,b) point to the internal capital markets of global banking conglomerates as a channel that strongly contributed to spreading financial shocks during the 2007–2009 crisis. The possibility that parents and branches transfer funds across borders but within the boundaries of the bank holding company is a feature of primary importance in the framework that we present in this paper. Like Ivashina, Scharfstein, and Stein (2015), our paper puts emphasis on the consequences of funding shocks for the lending behavior of global banks. While Ivashina, Scharfstein, and Stein (2015) examine the effect of the European sovereign debt crisis on US lending compared to Euro lending within global banks, our analysis focuses on the effects on US lending across different types of global banks.

By presenting stylized facts about the features distinguishing multinational from nonmultinational banks, our analysis is also closely related to Claessens, Demirgüç-Kunt, and Huizinga (2001) and Niepmann (2018). Our structural model focuses on two alternative forms of foreign banking: branching and subsidiarization. In this dimension, our work is related to Cerutti, Dell'Ariccia, and Pería (2007), Dell'Ariccia and Marquez (2010), Fiechter et al. (2011), and Danisewicz, Reinhardt, and Sowerbutts (2017). Some of the facts that we report, related to changes in foreign branches' balance sheets in the wake of the European sovereign debt crisis, are present also in Correa, Saprizza, and Zlate

⁴Internal capital markets are not fluid in that capital transfers from subsidiaries to their parents are limited by capital requirements set by the subsidiary's host-country regulator.

(2016). We explicitly compare changes in branches’ balance sheets to changes in the balance sheets of subsidiaries.

There is a small but growing literature that uses tools from international trade theory to study the operations of multinational banks. The seminal paper by Eaton (1994) sets the direction for structural research on this topic, but the first contributions to this agenda are in the pioneering work by Niepmann (2015, 2018). Our framework shares with Niepmann (2018) the emphasis on within-country bank heterogeneity and on the role of endogenous selection to understand aggregate outcomes in the global banking sector. The role of bank heterogeneity is also prominent in de Blas and Russ (2013) and Bremus et al. (2013), which both show evidence of granularity in the banking sector. Finally, this paper shares with Corbae and D’Erasmus (2013) the emphasis on using quantitative analysis to understand features of the banking data.

There has been an increasing concern about the unintended cross-border effects of policy actions, and global banks play an important role in the international transmission of shocks. In an empirical analysis of the spillovers of national banking regulations across borders, Berrospide et al. (2017) find that tighter banking regulations shift lending away from countries where the tightening occurs. In particular, subsidiaries and branches of banks domiciled in the tightening country play an important role in the transmission mechanism. A similar argument is made in Ongena, Owen, and Temesvary (2018), who study the transmission of US monetary policy across borders through the foreign lending operations of multinational banks headquartered in the United States. We contribute to this literature by examining the potential effects of alternative banking regulations in our quantitative analysis.

2 Foreign Banks in the United States: Stylized Facts

2.1 Data

This analysis relies on bank-level data from a three sources. Our main source is the Quarterly Report of Condition and Income that every US bank is required to file (also known as “Call Reports”). In addition to domestic banks, US-based subsidiaries of foreign banks must fill out these reports as well. We also use the quarterly “Report of Assets and Liabilities of US Branches and Agencies of Foreign Banks” that every branch and agency of a foreign bank is required to

file.⁵ Call Reports data include detailed information about a foreign bank’s US operations, and the ultimate owner’s identity, which allows us to distinguish US-based entities belonging to foreign-owned global banks from US-owned banks.

In order to have a full picture of global banks’ operations at home and abroad, we merge the Call Reports data with two additional data sources. First, we obtain regulatory reporting data and accounting data filed by the foreign parents of US-based subsidiaries and branches from S&P Global Market Intelligence. These data enable us to have a complete picture of each bank’s activities in the headquarter country and in the US. Second, we obtain reported sovereign debt holdings of European banks provided as part of the European Banking Authority’s (EBA) Stress Test information. The EBA started implementing annual stress tests in 2009, but only disclosed bank sovereign holdings from 2011 on. Each annual stress test is based on the banks’ portfolios as of the previous year. Therefore, we use European banks’ portfolio holdings as of the last quarter of 2010.

As a result of this data merger, we obtain a sample of 56 European banks that are the ultimate owners of US-based affiliates. At the ultimate owner level, we consolidate all the offices of the same type (i.e., all subsidiaries and all branches). The full list of banks in our merged sample is contained in Table C.1 in the Appendix. These merged data allow us to present evidence about the response to shocks of different entities of the same global banking conglomerate that are located in different countries. Since the core of our empirical analysis focuses on how global banks responded to the European sovereign debt crisis, we restrict our sample period to 2007–2013.

2.2 The Cross-Section of Foreign Banks

Foreign institutions have a substantial presence in the US banking market. Of the aggregate assets held by banks operating in the United States, between 15 and 20 percent belong to banking offices

⁵The Federal Financial Institutions Examination Council (FFIEC) collects these data in two different reporting forms: FFIEC 031 and FFIEC 041. Banks with foreign offices must file the FFIEC 031 form and banks with only domestic offices must file the FFIEC 041 form. The information about domestic operations is identical across reports for all practical purposes. Form FFIEC 002 is similar to the Call Reports, but it also contains the balances “due from” and “due to” the head office (parent) and related depository institutions, wherever located. The FFIEC 002 report contains data at the branch level. Foreign bank holding companies may have several separate branches in the US and each of these branches typically have only one location.⁶ Data in the 002 report are aggregated at the branch level (the legal entity), but different branches are reported separately. Appendix A summarizes the US regulatory framework and the changes it underwent in the past decades, with special focus on those regulations that had an impact on foreign banks operating in the United States. Changes to these regulations do not affect the approach and classification that we use in this paper.

that are ultimately owned by a foreign parent. Foreign-owned banking offices account for about 20 percent of total deposits and between 20 and 30 percent of total commercial and industrial loans in the United States (see Figure D.1 in the Appendix for more details).

What are the activities of FBOs in the United States? The answer is complex, as a foreign bank may operate in the US market under different organizational forms, associated with very different activities and—most importantly—different regulations. A foreign bank may open a *subsidiary bank*, which for most purposes operates as a domestically owned US banking entity. A subsidiary is subject to US regulation, raises independent equity, and is subject to independent capital requirements. A subsidiary may accept both uninsured wholesale deposits and retail deposits, which are insured by the Federal Deposit Insurance Corporation (FDIC).⁷ Any capital flows between the subsidiary and the foreign parent must happen “at arm’s length,” in the form of loans, equity injections, or capital distributions (dividends). This means that if a foreign parent wants to transfer funds to or from a subsidiary in the United States, there is no fluid internal channel to do so.⁸ In our dataset, we count 47 US-based subsidiaries of foreign banks, with total assets of approximately \$1.16tn, which represent 7.1 percent of all bank assets in the United States. Out of these 47 subsidiaries, 17 are ultimately owned by European banks, with total assets of \$0.68tn in the United States.

The other most common form of operations is branching: a *branch* is also subject to US regulation, but unlike a subsidiary does not raise independent equity. A branch is only subject to capital requirements at the conglomerate level in its home country (*i.e.*, branch assets are consolidated with the foreign parent assets when evaluating the conglomerate’s capital ratio). Branches may offer loans, but may only accept uninsured wholesale deposits.⁹ Unlike subsidiaries, branches have an intrafirm channel to transfer capital flows to/from the parent, and do display large intrafirm capital flows with their foreign parents (more on this below). In our dataset, there are 182 US-based branches of foreign banks, with total assets of approximately \$2.19tn, which represent 15 percent of all bank assets in the United States. Out of these 182 US-based branches, 62 are ultimately

⁷Deposits in subsidiaries are classified as retail if they are under the FDIC threshold (\$100,000 until 2005 and \$250,000 thereafter). Wholesale deposits are those above the FDIC threshold.

⁸Equity injections are rare and subject to the home regulator. Equity flows to the parent are in the form of dividend distributions, which are limited by earnings and are typically semiannual. Recently, these distributions are even more limited by the performance in the stress testing exercise for those subsidiaries with more than \$50 billion in assets.

⁹Branches do not have their own balance sheet, as it is consolidated into the balance sheet of the parent institution. Branches do not have a capital account, and are not required to report income statement variables. Nonetheless, the US regulatory framework requires foreign-owned branches and agencies to report their assets and liabilities in the FFIEC 002 form.

owned by European banks, with total assets of \$1.19tn in the United States.

Subsidiaries and branches are the two most common FBOs in the US banking system. Taken together, they represent more than 99 percent of the assets held by foreign-owned banking offices. In terms of business lines, these two organization types also entail activities that are close to those of traditional banks.¹⁰

Our description of the foreign banking sector in the United States begins by showing that there is selection by size akin to what is observed for multinational firms operating in nonbanking sectors. Figure 1 compares European parents of US-based FBOs and European banks without US operations in terms of their loans and deposits.¹¹ It is evident that the European banks that open affiliates in the US market are larger than the ones that do not.¹² Niepmann (2018) presents evidence of a similar pecking order based on bank efficiency (computed as the ratio of overhead costs to total assets). Multinational banks appear to be systematically more efficient than nonmultinational banks. The model that we present in the next section features a positive relationship between bank efficiency and bank size, consistent with Figure 1.¹³ The figure further distinguishes parents of foreign subsidiaries from parents of foreign branches, and shows that the parents of foreign subsidiaries are on average larger banks compared with the parents of foreign branches.

At the affiliate level, there are large size differences between subsidiaries and branches of FBOs. Figure 2 reports the average loans and deposits held by a US branch or subsidiary of a European bank. When comparing FBOs, the average subsidiary is substantially larger than the average

¹⁰In addition to branches and subsidiaries, the data display two more types of organizations. *Edge and agreement corporations* cannot engage in business in the United States with US-based entities and are precluded from making domestic loans or accepting domestic deposits. *Representative offices and nondepository trusts* do not accept deposits or give loans, and their asset holdings are negligible compared with the other types of foreign entities. Given their small weight in aggregate banking activities, we drop edge and agreement corporations, representative offices, and nondepository trusts from our sample and focus the analysis on foreign-owned branches and subsidiaries.

¹¹The pattern shown in Figure 1 holds also for overall assets. The assets side of a bank's balance sheet includes many types of loans: wholesale (commercial and industrial loans, real estate loans, and loans to other financial institutions) and retail (mortgages, home equity, auto loans, and credit cards). In addition, other assets held by banks are securities (US treasuries, residential and commercial mortgage-backed securities, other asset-backed securities, and a small amount of stocks) and trading assets. The liabilities side includes deposits, short-term and long-term debt, and owners' equity.

¹²To properly argue about selection by size, ideally we would compare foreign parents of US-based FBOs and foreign banks without operations abroad. Unfortunately, the available data do not allow us to distinguish foreign nonmultinational banks from foreign parents of FBOs located in countries other than the United States. However, we argue that since the United States is one of the most popular markets for the activities of multinational banks, if foreign banks do not have US operations, it is unlikely that they have significant operations in other foreign markets.

¹³Berger and Mester (1997) find scale economies for more than 90 percent of firms in each size class using 6,000 US commercial banks' data; Hughes and Mester (1998) find evidence of scale economies and that bank managers use financial capital to signal the level of risk to outsiders; Wheelock and Wilson (2009), using data from 1984 to 2006, also find that banks had increasing returns to scale throughout the entire distribution of banks; and Feng and Serletis (2010) find that banks over \$1 billion in assets also have economies of scale at the largest banks.

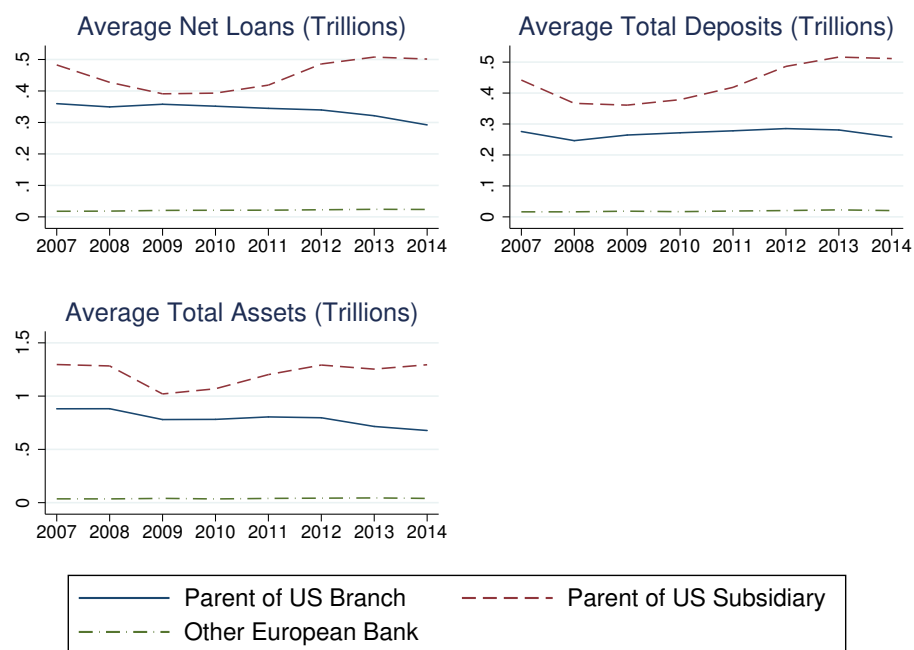


Figure 1: **Foreign Parents versus Foreign Nonmultinational Banks**

Comparison of size measures of foreign parents of US-based FBOs (subsidiaries and branches) versus European banks without US operations. Data are in trillions of US dollars.

Source: S&P Global Market Intelligence data for top-tier parents of US branches and subsidiaries from Europe.

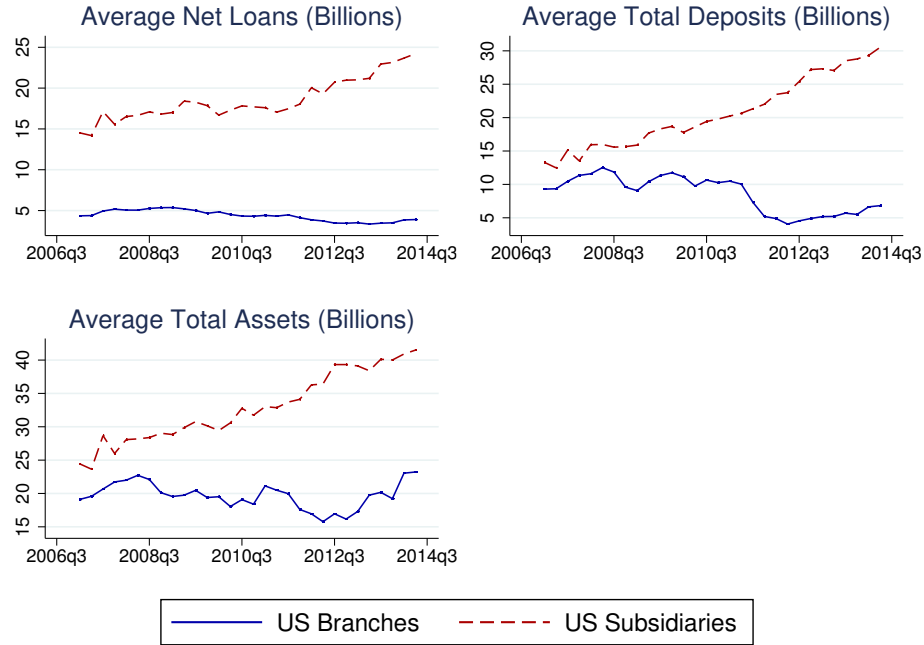


Figure 2: **US-Based Branches versus US-Based Subsidiaries of Foreign Banks**

Comparison of size measures of US-based subsidiaries and branches of FBOs. Data are in billions of US dollars.

Source: US Structure Data for US Offices of Foreign Banking Organizations - Selected Assets and Liabilities of Domestic and Foreign-Owned US Commercial Banks plus US Branches and Agencies of Foreign Banks.

branch both in terms of deposits and loans. Size differences are persistent over the sample period, and are not driven by a few firms with extraordinarily large balance sheets: the deposits and loans size distributions of foreign subsidiaries first-order stochastically dominate the analogous size distributions of foreign branches (see Figure D.2 in the Appendix).

Finally, Appendix Figure D.3 shows that the amount of assets foreign banks hold in the United States is positively related to their domestic size, indicating that banks that are “big” in their home country also have large foreign operations. This fact motivates an important assumption of the model: that banks transfer their efficiency to their foreign affiliates.

2.3 Foreign Banks’ Response to Shocks

We use the European sovereign debt crisis as a natural experiment to analyze how global banks respond to shocks and the extent to which these institutions transmit shocks across countries. In

particular, we analyze the differential effects on banks’ balance sheets due to differences across bank portfolio holdings of sovereign debt from Greece, Italy, Ireland, Portugal, and Spain (GIIPS). We consider that the sovereign debt crisis in these European countries is largely exogenous to the US economy and banking system. The exogeneity of the shock allows us to identify the transmission mechanism through foreign banks in the US. The analysis in this section is similar in spirit to the one in Cetorelli and Goldberg (2012b) and Correa, Saprizza, and Zlate (2016), but with an emphasis on the distinction between foreign subsidiaries and foreign branches operating in the United States. In a nutshell, we find that after the European sovereign debt crisis: 1) US-based branches of exposed European banks reduced their loans in the United States while US-based subsidiaries of exposed European banks did not experience a decline in loans; 2) the probability that a US branch received an intrafirm transfer from an exposed parent increased, and the amount of the transfer increased; and 3) there was a flight of uninsured wholesale deposits from the US branches of exposed European parents, while both the insured and uninsured deposits of US subsidiaries of exposed European parents were not affected.

We start by assessing the differential response of branches versus subsidiaries by examining their loans. For this purpose, we run the following regression:

$$l_{b,t}^e = \alpha + \beta_1 \text{Crisis}_t + \beta_2 \text{Exp}_b + \beta_3 \text{Crisis}_t \times \text{Exp}_b + \delta_c + \varepsilon_{b,t}^e, \quad (1)$$

where $l_{b,t}^e$ is the natural log of the total loans issues by entity e belonging to bank b at time t . An entity is either an aggregate of US-based branches or an aggregate of US-based subsidiaries belonging to a European banking conglomerate b . We run the regression separately for branches and for subsidiaries. The dummy variable Crisis_t takes the value of 1 for all quarter-years after Q1-2011 (included), while the dummy variable Exp_b takes the value of 1 when parent bank b of entity e is exposed to GIIPS sovereign debt as of December 2010. We classify a bank as exposed if it has positive GIIPS sovereign debt holdings. The regression includes parent country fixed effects, denoted by δ_c , to exploit variation in loans across banks from the same host country.¹⁴ The results are reported in Table 1 and show that, after the European sovereign debt crisis, US branches of exposed European banks decreased their loans in the United States, while the loans of US subsidiaries of exposed European banks were unaffected.¹⁵ The estimated coefficients in the second

¹⁴Appendix Table C.2 reports summary statistics of the dependent variables of interest and Appendix Figure D.4 illustrates that the parallel trend assumptions hold for exposed versus non exposed branches and subsidiaries across all variables of interest (loans, deposits, and intrabank transfers). We do not include parent bank fixed effects because only about 20 percent of banks in our sample have both branches and subsidiaries in the US.

¹⁵Our results are robust to alternative definitions of exposed banks, as Appendix Table C.3 shows. Precisely, we

Table 1: **Intensive Margin of Loans: Branches versus Subsidiaries**

	$\ln(\text{Total Loans})$	
	Subsidiaries	Branches
Crisis	0.185 (0.129)	0.240** (0.0936)
Exposed	-0.844* (0.414)	0.391* (0.210)
Crisis \times exposed	-0.146 (0.165)	-0.481*** (0.110)
Constant	14.66*** (0.0964)	13.31*** (0.0516)
Country FE	Yes	Yes
No. of Obs.	926	2,524
R ²	0.403	0.367

Note: Robust standard errors in parentheses. Levels of significance are denoted by *** $p < 0.01$, ** $p < 0.05$, and * $p < 0.1$. Source: US Structure Data for US Offices of Foreign Banking Organizations - Selected Assets and Liabilities of Domestic and Foreign-Owned US Commercial Banks plus US Branches and Agencies of Foreign Banks.

column of Table 1 imply that total loans held in US branches owned by exposed parents experienced a 38 percent decline —about \$269 billion, after the crisis. As a comparison, Peek and Rosengren (2000) estimate the effects of the Japanese crises in the early 1990s and find that assets held by Japanese branches in California, New York, and Illinois, declined by 53 percent, 50 percent, and 70 percent, respectively, with a total asset contraction of \$42 billion in 2013 dollars.¹⁶

Looking across different types of banks, Appendix Table C.5 shows that the decline in loans was more pronounced in banks with a higher degree of internationalization, or, more precisely, a higher share of US assets to total bank assets. Since the banks with a stronger presence in the US were also the largest (see Appendix Figure D.3) this finding is consistent with Cetorelli and Goldberg (2012b), who find that large branches responded more than small branches to the Great Depression.

also performed the empirical analysis reported in this section using the following alternative definitions of “exposed parent”: (1) if from a country in the euro zone; (2) if from a country in Europe; (3) if it has GIIPS sovereign debt holdings above the sample median; (4) if its ratio of GIIPS sovereign debt holdings over assets is above the sample median; (5) if its ratio of GIIPS sovereign debt holdings over Tier one capital is above the sample median. We define exposure using coarse dummies rather than using exposure levels as explanatory variables because GIIPS sovereign debt holdings constitute a very small share of these banks’ balance sheets: among exposed parents, the mean (median) exposure is only 3.07 percent (1.7 percent) of assets. This said, running the regressions using actual exposure levels produces the same qualitative results, also shown in the Appendix. We also run the regression pooling observations of branches and subsidiaries, identifying differential responses to the crisis via triple interaction terms (Appendix Table C.4).

¹⁶The \$269 billion decline in loans is computed as a 38% decline in the loans of 182 branches which have average loans of \$3.89 billions. Peek and Rosengren (2000)’s original estimate is \$28.3 billion in 1996 dollars.

There is some concern that the exposure to GIIPS sovereign debt is not predetermined. The exact timing of the European sovereign debt crisis played out over a longer stretch than is captured by our annual data frequency, that is, banks may have started to adjust their sovereign holdings before December 2010. While the results in Table 1 should be interpreted as describing a correlation between banks' GIIPS exposure and loans, we also notice that possible banks' reductions in their sovereign debt holdings prior to 2010 would make our results weaker.

Given that the sovereign debt crisis affected the balance sheets of the European parents of these FBOs, one might think that the drop in loans of their US-based branches was associated with an internal transfer of resources from the United States to Europe. The left panel of Figure 3 shows the evolution of the aggregate net flows to and from related institutions. From 1995 to 2011, the amounts that European parent banks were borrowing from their US branches were much larger than the amounts that US branches were borrowing from their European parents. This pattern is consistent with the evidence shown by Cetorelli and Goldberg (2012a,b) and Correa, Saprizo, and Zlate (2016) about foreign branches being a source of funding to their US parents. The pattern sharply reverts at the onset of the European sovereign debt crisis in 2011.¹⁷ The right panel of Figure 3 illustrates the intrafirm flows broken down between exposed and nonexposed banks. It is evident from the figure that the sign reversal in intrafirm capital flows between parents and branches is mostly due to FBOs whose parents were exposed to the crisis.¹⁸

We run the following regressions to establish more precisely the sharp distinction between intrafirm flows of exposed versus nonexposed European banks with foreign branches:

$$T_{b,t}^e = \alpha + \beta_1 \text{Crisis}_t + \beta_2 \text{Exp}_b + \beta_3 \text{Crisis}_t \times \text{Exp}_b + \delta_c + \varepsilon_{b,t}^e. \quad (2)$$

To study both the intensive and extensive margin of the intrafirm transfers, $T_{e,b,t}$ is either a dummy variable taking the value of one if parent bank b has a claim on branch e 's assets in period t (zero if the branch has a claim on the parent), or the size of the intrafirm transfer of parent bank b to branch e at time t . The other variables have been defined above.

The results are reported in Table 2, and show that at the onset of the European sovereign debt crisis, both the intensive and the extensive margin of the intrafirm transfer between a European

¹⁷There is some evidence of retrenchment after the global financial crisis in 2008 (see Aldasoro, Ehlers, and Eren (2019)). However, we do not see evidence of net flows changing before 2010 in European banks exposed to GIIPS sovereign debt. The large changes we identify happen, as shown in the regressions, after 2010.

¹⁸Figure D.5 in the Appendix illustrates the breakdown of intrafirm flows by origin country.

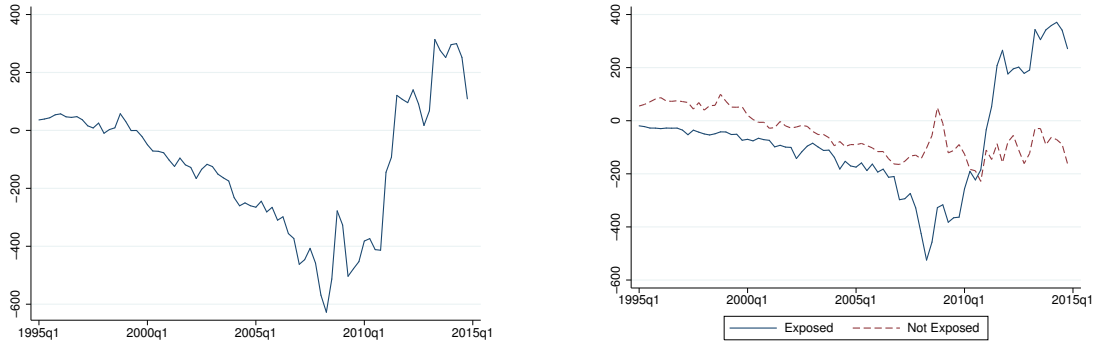


Figure 3: **Net Intrafirm Flows for Foreign Branches of European Banks**

The plot shows the difference between *net due from related depository institutions* and *net due to related depository institutions* (items 2 and 5, respectively, from the “Schedule RAL - Assets and Liabilities”). Data are in billions of US dollars.

Source: Report of Assets and Liabilities of US Branches and Agencies of Foreign Banks (FFIEC 002).

Table 2: **Intensive and Extensive Margin of Intrafirm Transfers between European Parents and their US Branches**

	prob($T > 0$)	T
Crisis	0.236*** (0.0596)	1.077 (1.396)
Exposed	-0.906*** (0.0791)	-11.44** (4.990)
Crisis \times exposed	0.824*** (0.138)	13.36*** (3.922)
Constant	0.332*** (0.0337)	-1.467** (0.724)
No. of Obs.	2,682	2,658
R ²		0.174

Note: Robust standard errors in parentheses. Levels of significance are denoted by *** $p < 0.01$, ** $p < 0.05$, and * $p < 0.1$. Source: Report of Assets and Liabilities of US Branches and Agencies of Foreign Banks (FFIEC 002).

parent and its US branches were affected as long as the parent was exposed to GIIPS debt. The probability that a US branch received an intrafirm transfer from the exposed parent increased, and the amount of the transfer also increased. Appendix Table C.6 illustrates the robustness of these results to different definitions of exposure. Appendix Table C.7 shows that, opposite to what we observe for loans, the size of the transfer increase after the crisis is not related to bank size.

So far we have documented a drop in loans for US branches accompanied by a transfer of resources from the already-exposed European parents to their branches. To shed light on this apparent puzzle, we examine the funding side of US FBOs' balance sheets by running regressions of deposits on a set of dummies that are analogous to the ones previously used:

$$d_{b,t}^e = \alpha + \beta_1 \text{Crisis}_t + \beta_2 \text{Exp}_b + \beta_3 \text{Crisis}_t \times \text{Exp}_b + \delta_c + \varepsilon_{b,t}^e, \quad (3)$$

where $d_{i,t}^e$ is the natural log of total deposits of entity e at time t . We run three separate regressions: one for insured retail deposits, which are accepted only by subsidiaries, one for uninsured wholesale deposits held by subsidiaries, and one for uninsured wholesale deposits held by branches.

The results are shown in Table 3. Retail deposits in exposed subsidiaries appear to be unaffected by the crisis. More interestingly, the flight in wholesale deposits that other papers have documented appears to be unique to branches owned by exposed European parents, as wholesale deposits in US subsidiaries owned by exposed European parents were unaffected. Other papers have documented the flight of wholesale deposits during the European sovereign debt crisis, but did not highlight the different responses depending on the organizational form of the banks accepting them.¹⁹ Table 3 suggests that the flight affected only those wholesale deposits that were held in branches, indicating that this less-regulated organizational form was perceived as less stable by large wholesale depositors. This result is consistent with the idea that the chain of events in 2010 resulted in a fear of contagion regarding sovereign default in the GIIPS countries which, at the same time, fueled concerns about the stability of the euro and the euro zone more broadly, since exposed banks were headquartered in many countries in Europe, not only the GIIPS (see Appendix Figure D.5). Appendix Tables C.8 - C.9 illustrate the robustness of these results to different definitions of exposure, and Appendix Table C.10 shows that, similar to what we observe for loans, large banks experienced a more severe funding crisis through the flight in wholesale deposits. Since the change in intrabank transfers doesn't appear to be related to bank size, the larger decline in

¹⁹See Correa, Saprizza, and Zlate (2016); Egan, Hortacsu, and Matvos (2017).

Table 3: **Intensive Margin of Wholesale and Retail Deposits; Branches vs. Subsidiaries**

	$\ln(\text{Retail Deposits})$	$\ln(\text{Wholesale Deposits})$	$\ln(\text{Wholesale Deposits})$
	Subsidiaries		Branches
Crisis	0.445*** (0.152)	0.0726 (0.169)	0.425* (0.219)
Exposed	-2.045** (0.913)	-1.047 (0.830)	1.580** (0.636)
Crisis \times exposed	0.572 (0.508)	0.0446 (0.262)	-1.043*** (0.344)
Constant	13.69*** (0.165)	14.08*** (0.159)	12.54*** (0.148)
Country FE	Yes	Yes	Yes
No. of Obs.	922	914	2,562
R-squared	0.441	0.453	0.647

Note: Robust standard errors in parentheses. Levels of significance are denoted by *** $p < 0.01$, ** $p < 0.05$, and * $p < 0.1$. Source: US Structure Data for US Offices of Foreign Banking Organizations - Selected Assets and Liabilities of Domestic and Foreign-Owned US Commercial Banks plus US Branches and Agencies of Foreign Banks.

funding experienced by the larger banks resulted in a deeper contraction in loans for larger banks, as shown in Appendix Table C.5.

The results of this analysis depict a scenario in which distress among some European parents was associated with a flight of uninsured deposits from their foreign branches in the United States. The reaction on the funding side of foreign branches has the effect of changing the direction of intrafirm banking flows: foreign branches appeared to be a source of funding to their parents until 2011, while after the crisis parents started acting as a source of funding to their branches. This evidence indicates that branching appears to transmit shocks across countries more than subsidiarization does, as the latter institutional arrangement effectively isolates FBOs from potential distress affecting their parents.²⁰

In the next section we introduce a structural model of foreign banking that is consistent with the institutional features of the foreign banking sector in the United States and with the empirical evidence presented so far in this paper.

²⁰It could be argued that the transmission of shocks is in response to regulatory pressures in the home country. That narrative is not inconsistent with ours, as regulatory pressures arise as a result of the deterioration of capital ratios at the bank holding company level. This deterioration of capital ratios is ultimately the driver behind the mechanism described in this paper.

3 A Model of Foreign Banking

This section introduces a simple model that illustrates the main tradeoffs that a bank faces when deciding whether and how to operate in a foreign country. We extend the Monti-Klein model (see Klein 1971, and Monti 1972) to a setting with monopolistic competition among heterogeneous banks, featuring the institutional characteristics of different bank types. The model enables us to understand banks' decisions as responses to various shocks and the consequences of these choices for the banking sector in aggregate, and lays the ground for the quantitative analysis developed in the next section.

3.1 Setup

The model economy is composed of two countries, Home and Foreign. Variables referring to the Foreign country are denoted by an asterisk (*). Each country is populated by a large mass of banks. In addition, each bank may open an affiliate in the other country, either as a branch or as a subsidiary, and thus become the parent of a multinational bank.

In order to examine the effect of shocks like the European sovereign debt crisis, we develop the model in two periods. In the first period, each bank chooses whether and how to operate in the foreign market, makes profits, and accumulates equity. At the end of the first period, an unexpected shock hits the economy, affecting equity accumulation and the decisions banks make in the second period.

We start by describing the profit maximization problem of a bank conditional on each one of the three international status choices: local bank (a bank that chooses not to operate in the foreign market), parent with foreign subsidiary, or parent with foreign branch. Once the tradeoffs driving a bank's optimal decisions conditional on its status are well understood, we model selection into international status.

In each period and in each market where they operate, banks offer one-period loans (L). With a certain probability of default ($1 - p$), loans are delinquent and the principal is not repaid. Each bank also accepts deposits (D), and borrows/lends in the interbank market (M). We assume that every bank has market power in the market for loans, originating from some type of differentiation (e.g., spatial or product). This differentiation, together with customers' love of variety in banking products, is the rationale for why many banks coexist in the economy. Banks are heterogeneous in

the efficiency with which they manage their activities, and operate under monopolistic competition in the market for loans and deposits. For simplicity, the interbank market is assumed to be perfectly competitive. We do not model domestic entry: all banks operate and make nonnegative profits in their home market.

During each period, banks also incur a cost to manage deposits and loans, described by the cost function $a \cdot C(D, L)$. The bank-specific efficiency parameter a is the source of heterogeneity across banks, and it affects the management cost function multiplicatively, so that “low a ” banks are more efficient than “high a ” banks. Moreover, each bank is endowed with a given amount of equity $E(a)$, which is an exogenous function of bank efficiency.²¹

In order to assess the importance of regulatory banking policies for the response to shocks, we model deposit insurance and capital requirements.

Deposit Insurance. In the United States, all banks accepting retail deposits have to pay deposit insurance to the FDIC, which determines the deposit insurance premium (IP), or assessment, on a risk basis. A bank’s assessment is calculated by multiplying its assessment rate by its assessment base, where a bank’s assessment base is equal to its average consolidated total assets minus its average tangible equity. The assessment rate expresses the bank’s ability to withstand funding and asset stress, so we model it as a function of the bank’s equity and liabilities:

$$IP(D, L, M) = \underbrace{f_p(D, M^-, E(a))}_{\text{assessment rate}} \cdot \underbrace{(L + M^+ - E(a))}_{\text{assessment base}} := \left[R_{min} + f_p \cdot \frac{M^-}{E(a)} \right] (L + M^+ - E(a)), \quad (4)$$

where M^+ (M^-) denotes interbank lending (borrowing), and $R_{min}, f_p > 0$.²² The functional form we chose results in an insurance premium which is higher the more a bank resorts to interbank borrowing to fund its activities. The role of deposit insurance in the model, besides achieving a more realistic description of the institutional setting in which banks operate, is to prevent that a funding shock is compensated by resorting to excessive interbank borrowing, something that the regulation prevents banks from doing.

Capital Requirements. Banks are subject to capital requirements every period, *i.e.*, there is

²¹In Section 4, we back up the distribution of equity from data on the loans distribution and the equity over assets ratio of banks in our sample.

²²The functional form in expression (4) broadly follows the FDIC Current Assessment Rate Calculator for Highly Complex Institutions. Appendix E contains more institutional details about the calculation of deposit insurance assessments.

a lower bound on the ratio of equity to risk-weighted assets that they are allowed to sustain:

$$\frac{E(a)}{\omega_L L + \omega_M M^+} \geq k, \quad (5)$$

where the value of k is set in the United States under the implementation of the Basel II/Basel III Accords. The parameters ω_L and ω_M are appropriate weights that reflect the riskiness of a bank's loans and investments, and are determined by the regulatory agencies (in the US case, by the Federal Reserve, FDIC, and Office of the Comptroller of the Currency).

3.2 Local Banks

A local bank chooses the optimal amounts of loans, L , interbank activity, M , and deposits, D , to maximize its profits:

$$\begin{aligned} \max_{L,D,M} \quad & p \cdot r_L(L) \cdot L - (1-p)L + r_M M - r_D(D) \cdot D - aC(D, L) - IP(D, L, M) \\ \text{s.t.} \quad & E(a) + D \geq L + M \quad (\text{resource constraint}) \\ & \frac{E(a)}{\omega_L L + \omega_M M^+} \geq k \quad (\text{capital requirement}), \end{aligned} \quad (6)$$

where $r_L(L)$, denotes a downward-sloping demand for loans, and $p \in (0, 1)$ is the probability of loan repayment. The function $r_D(D)$ is an upward-sloping supply of insured retail deposits,²³ while r_M is the interbank rate, which the bank takes as exogenous, but is endogenously determined in industry equilibrium. Each bank maximizes the profits generated by its activities subject to two constraints. First, its assets must not exceed its liabilities (the resource constraint). Second, the ratio of equity to risk-weighted assets must be maintained above the capital requirement, k . Notice also that the bank's management cost and its equity level depend on the bank's efficiency, which is the exogenous source of heterogeneity in the model.

In normal times, we observe in the data that banks choose to operate with a buffer on their capital requirements, *i.e.*, capital requirement constraints are normally not binding.²⁴ For this reason, we assume that the equilibrium in normal times is one where the resource constraint binds,

²³In the data, parent banks and their subsidiaries can accept all kinds of deposits, both wholesale and retail. For simplicity, in the model we assume that parent banks and subsidiaries hold only retail deposits. The results are robust to the removal of this simplifying assumption.

²⁴Appendix Figure D.6 shows that banks in our sample have ratios of equity to risk-weighted assets well above the capital requirements set by the regulators.

but the capital requirement does not. We refer to this solution of the model as the “unconstrained equilibrium.” The unconstrained equilibrium is characterized by an interior solution for (L, D) , described by the following first-order conditions:

$$\begin{aligned} [L] \quad & p \left[\frac{\partial r_L(L)}{\partial L} L + r_L(L) \right] = a \frac{\partial C(\cdot)}{\partial L} + \frac{\partial IP(\cdot)}{\partial L} + (1 - p) + r_M \\ [D] \quad & \left[\frac{\partial r_D(D)}{\partial D} D + r_D(D) \right] + a \frac{\partial C(\cdot)}{\partial D} + \frac{\partial IP(\cdot)}{\partial D} = r_M, \end{aligned}$$

where the functions’ arguments have been omitted to simplify the notation. The resource constraint pins down interbank activity: $M = E(a) + D - L$.

The first-order conditions are intuitive. A bank chooses the optimal amount of loans such that the marginal revenue from lending is equal to the sum of the marginal costs of loans and deposit insurance, the expected marginal loss from delinquent loans, and the opportunity cost of forgone alternatives, namely lending to other financial institutions in the interbank market. Similarly, optimal deposits are set such that their “total” marginal cost, inclusive of management costs and the insurance premium, is equal to the marginal cost of borrowing in the interbank market. In Appendix E, we illustrate that —under some simple parametric assumptions— a bank’s maximal profit is an increasing function of the bank’s efficiency, $1/a$, and the bank’s equity, $E(a)$.

In the model, shocks to the economy may induce situations where the capital constraint of a local bank is binding. We refer to this scenario as the model’s “constrained equilibrium” and present its detailed solution in Appendix E.

3.3 The Parent-Subsidiary Pair

Given that foreign-owned subsidiaries are subject to the same regulation as US banks, a parent-subsubsidiary pair solves virtually the same profit maximization problem that a local bank faces in each market in which it operates:

$$\begin{aligned}
& \max_{\substack{L, D, M \\ L^*, D^*, M^*}} pr_L(L) \cdot L - (1-p)L + r_M M - r_D(D) \cdot D - aC(D, L) - IP(D, L, M) + \dots \\
& p^* r_L^*(L^*) \cdot L^* - (1-p^*)L^* + r_M M^* - r_D^*(D^*)D^* - aC(D^*, L^*) - IP(D^*, L^*, M^*) \quad (7) \\
& s.t. \quad (1-s_E)E(a) + D \geq L + M \\
& s_E E(a) + D^* \geq L^* + M^* \\
& \frac{(1-s_E)E(a)}{\omega_L L + \omega_M M^+} \geq k \\
& \frac{s_E E(a)}{\omega_L L^* + \omega_M M^{*+}} \geq k,
\end{aligned}$$

where asterisks denote foreign-market variables, and s_E denotes the share of bank equity that is funding the operations of the foreign subsidiary.²⁵ Consistent with the evidence presented in Section 2, we assume that a parent transfers its efficiency level $1/a$ to its foreign subsidiary. While loans and deposits markets are segmented, we assume that there is a frictionless international interbank market, clearing at the rate r_M . We also assume that the deposit insurance premium, the capital requirement, and the risk weights on assets are symmetric across countries.

Given that the country-level profit functions associated with the two entities forming the pair are identical, and the US regulation treats foreign subsidiaries as independent US banks, the equilibrium for each entity of a parent-subsidiary pair takes the same form as the equilibrium for a local bank, with the appropriate equity levels, both in the unconstrained and in the constrained case.

3.4 The Parent-Branch Pair

When a parent bank operates in the Foreign market with a branch, the activities of the affiliate differ from those of the parent. Branches do not raise independent equity, they are not subject to capital requirements, and can only accept uninsured wholesale deposits. Moreover, there exists an intrafirm channel linking the assets and liabilities of the parent and its branch: parents of foreign branches can borrow from or lend to their branches at no cost.

A parent-branch pair solves:

²⁵In Section 4, we calibrate s_E directly as subsidiary equity divided by parent equity. An alternative would have been to solve for the optimal equity distribution of a parent-subsidiary pair across countries. Since the profit functions of the parent and the subsidiary have the same form, this would have resulted in s_E being pinned down by relative market size, which would have generated subsidiary equity shares much larger than in the data.

$$\begin{aligned}
& \max_{\substack{L, D, M, T \\ L^*, D^*}} pr_L(L) \cdot L - (1-p)L + r_M M - r_D(D) \cdot D - aC(D, L) - IP(D, L, M) + \\
& \dots p^* r_{L^*}^*(L^*) \cdot L^* - (1-p^*)L^* - r_D^{*w} \left(D_w^*; \left(\frac{E(a)}{k \cdot RWA} \right) \right) \cdot D_w^* - aC(D_w^*, L^*) \quad (8) \\
& s.t. \quad E(a) + D \geq L + M + T \\
& \quad D_w^* + T \geq L^* \\
& \quad \frac{E(a)}{\omega_L(L + L^*) + \omega_M M^+} \geq k.
\end{aligned}$$

The profit function reflects the institutional restrictions that make branches different from local banks and subsidiaries. First, the balance sheet of a branch is effectively “merged” with that of its parent: branches do not raise independent equity and can transfer funds to/from the parent at no cost (T , which is positive when the parent is lending to the branch).²⁶ As a result, if a branch has excess funds, it may transfer these funds to the parent to finance its domestic lending (as it appears in the pre-crisis period). Similarly, a parent can fund its branch in the event of a shortage of deposits (as it appears in the post-crisis period). Second, the lack of independent equity requirements for branches implies that they are subject to capital requirements only at the level of the entire conglomerate. Finally, on the liabilities side, branches can only accept uninsured wholesale deposits. The term $r_D^{*w} \left(D_w^*; \left(\frac{E(a)}{k \cdot RWA} \right) \right)$ is the supply of wholesale deposits, where RWA denotes risk-weighted assets: $RWA = \omega_L(L + L^*) + \omega_M M^+$.

We rely on the estimates by Egan, Hortacsu, and Matvos (2017) and assume that the demand for uninsured wholesale deposits is less elastic than the demand for insured retail deposits, and that wholesale deposits are sensitive to some measure of “distress” experienced by the banking organization. Our model-based measure of distress is inversely related to the buffer in the capital requirement that banks hold in normal times, given by the ratio of equity to risk-weighted assets (RWA) divided by the capital requirement k . When $\frac{E(a)}{k \cdot RWA} = 1$, the capital requirement is binding and the bank experiences maximum distress, resulting in the totality of wholesale deposits being withdrawn. Distress (and the severity of the wholesale deposits flight) decreases as $\frac{E(a)}{k \cdot RWA}$

²⁶Because intrabank transfers are costless, the location of interbank activity for parent-branch pairs is undetermined in the model. For this reason, and without loss of generality, we assume that all interbank activity M is managed by the parent. It is possible to relax the assumption of costless transfers: a model where transfers between parents and FBOs are costly would have the same qualitative implications as the current model, as long as the cost of transfers is higher for parent-subsidiary pairs than for parent-branch pairs.

grows bigger than one. This specification is also consistent with Ivashina, Scharfstein, and Stein (2015), who conclude that wholesale funding is [quote] “*sensitive to changing perceptions of a bank’s creditworthiness*”.

3.5 Selection, Equity Accumulation and Industry Equilibrium

A bank decides whether to operate only locally or to open a foreign affiliate (branch or subsidiary) depending on which option is associated with the highest expected profits. We assume that entering the Foreign market involves a fixed cost, which is higher if the bank enters with a subsidiary rather than a branch: $F_S > F_B > 0$. The fixed costs of opening a subsidiary may include the cost of setting up a network of affiliates, acquiring customers, and learning about the host country’s regulatory framework. As the activities of branches are more limited compared to those of subsidiaries, we assume that the fixed cost of branching is lower than the fixed cost of subsidiarization.

In the first period, a bank chooses the organizational form s that maximizes its total profits next of entry costs:

$$\tilde{\pi}^1(a) \equiv \max_{s \in \{D, PS, PB\}} \{\tilde{\pi}_D(a); \tilde{\pi}_{PS}(a) - F_S; \tilde{\pi}_{PB}(a) - F_B\} \quad (9)$$

where $\tilde{\pi}_D(a)$, $\tilde{\pi}_{PS}(a)$, and $\tilde{\pi}_{PB}(a)$ denote the maximal profits of a local bank, of a parent-subsidiary pair, and of a parent-branch pair, respectively.

In the second period, banks take decisions conditional on international status. Local banks and parent-branch pairs continue operations as long as the shock does not drive them to negative equity, in which case they shut down. Parent-subsidiary pairs can either continue their operations in both markets, shut down their subsidiaries (by repatriating subsidiary’s equity and becoming a local bank) or shut down entirely.

$$\tilde{\pi}^2(a) \equiv \begin{cases} \max \{\tilde{\pi}_D(a), 0\} & \text{if } s = D; \\ \max \{\tilde{\pi}_{PB}(a), 0\} & \text{if } s = PB; \\ \max \{\tilde{\pi}_{PS}(a), \tilde{\pi}_D(a), 0\} & \text{if } s = PS. \end{cases} \quad (10)$$

Since foreign subsidiaries cannot exist without a parent, we assume that events that drive to zero either the equity of the subsidiary or the equity of the parent result in the bank returning to be a local one (by shutting down an unprofitable subsidiary in the first case, or by shutting down

a profitable subsidiary to repatriate equity to revive an unprofitable parent in the second case). When both entities of the conglomerate have zero equity, the entire multinational bank shuts down.

To close the model in a banking industry equilibrium, we assume that each country is populated by a continuum of banks that draw their bank-specific efficiency, $1/a$, from the exogenous distributions $F(a)$ and $F^*(a)$. Selection into the Foreign market implies that there are endogenous equilibrium distributions of banks operating in each country, which we denote with $G(a)$, $G^*(a)$.

The interest rate in the interbank market is given by the market-clearing condition:

$$\int M(a; r_M) G(a) da + \int M^*(a; r_M) G^*(a) da = 0. \quad (11)$$

Each bank starts the first period with a given level of equity, $E(a)$, and accumulates equity over time through reinvested profits:

$$E^2(a) = E^1(a) + \tilde{\pi}^1(a). \quad (12)$$

3.6 Selection: Matching Cross-Sectional Facts

The modeling choices driving selection into the foreign market and the trade-off between branching and subsidiarization are consistent with the facts reported in Section 2.

Due to the presence of fixed entry costs, only the largest (most efficient) banks decide to open foreign entities, becoming multinational banks, consistent with Figure 1.²⁷

In the model, branching and subsidiarization are alternative choices; hence, no bank chooses both options to operate in a foreign market. This result is consistent with most of the observations in our sample. Among the 47 European banks in our sample, 37 operate in the US market exclusively with branches or exclusively with subsidiaries. Six of the remaining banks adopt both options, but have more than 70 percent of their assets in one organizational form.

The choice between branching versus subsidiarization is driven by the trade-off between different forces: branches are less costly than subsidiaries because of lower entry costs and the lack of deposit insurance premium to pay, and provide a flexible channel (T) to redistribute capital across countries, but are associated to a more volatile source of funding compared to subsidiaries.

²⁷This fact is also consistent with evidence pointing towards selection by size for multinational corporations in other sectors (see Bernard, Jensen, and Schott 2009).

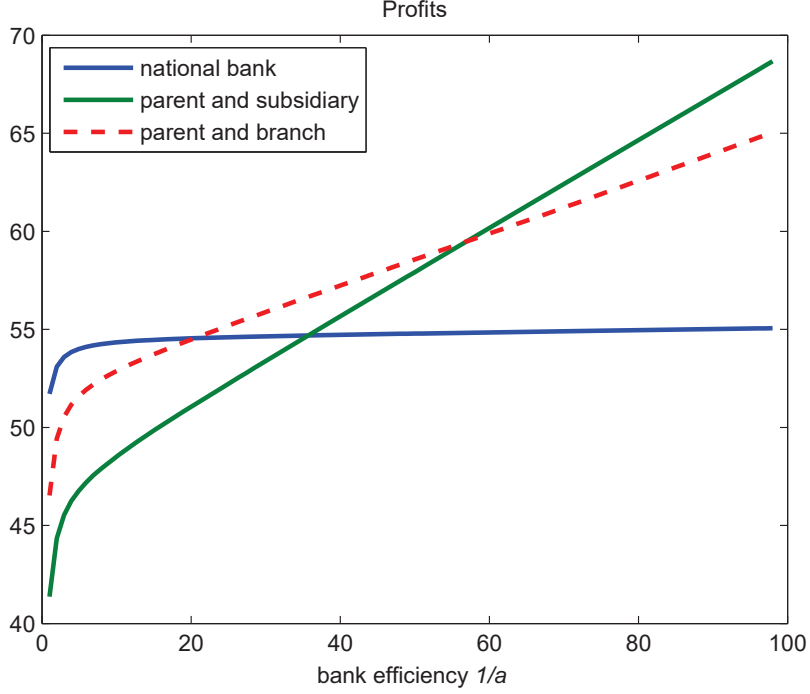


Figure 4: **Selection by Efficiency/Size into International and Organizational Status**
Source: Authors' calculations.

For the model to generate selection by size across the different types of FBOs, there needs to be a tradeoff between the fixed versus variable costs of branching compared to subsidiarization. Particularly, one obtains the observed selection of the most (least) efficient global banks into subsidiarization (branching) if subsidiarization, compared to branching, is associated with lower variable costs but higher fixed costs, as illustrated in Figure 4. Differences in bank efficiency directly translate into differences in the size of deposits and loans at the bank-level, so that more efficient banks issue more loans and accept more deposits than less efficient banks. By including the relative sizes of different bank types as target moments of our calibration, we ensure that the model generates the same selection pattern that we observe in the data: foreign subsidiaries are larger than foreign branches in terms of loans, deposits, and overall assets.

4 Quantitative Analysis

In this section, we quantify the model in order to use it for counterfactual analysis. We start by calibrating the model to be consistent with the cross-sectional stylized facts presented in Section 2.

The calibrated model is able to reproduce the differential response of global banks with different organizational structures to the shock we studied empirically, the European sovereign debt crisis. To answer a set of policy-relevant questions, we perform a series of counterfactual exercises that shed light on the strength and weaknesses of the current US regulatory framework.

4.1 Calibration

Our calibration exercise proceeds in three steps. First, a subset of the model's parameters can be directly matched to empirical observations or to previous studies. Second, we use the empirical distribution of loans to discipline the parameters of the banks' efficiency and equity distributions. Third, we use the model to jointly calibrate the remaining parameters by matching some moments of interest. Since we want to calibrate the economy prior to the European sovereign debt crisis, all the data moments of interest are for the year 2010.

We parameterize the model to preserve tractability and make possible the identification of key parameters. We assume a constant elasticity loan demand function: $L(r_L) = r_L^{-\varepsilon} A$, where $\varepsilon > 1$ is the elasticity of loan demand, and A is a parameter describing the aggregate size of the loan market. Similarly, we assume a constant-elasticity retail deposit supply function: $D(r_D) = r_D^{\vartheta} B$, where $\vartheta > 0$ is the elasticity of retail deposit supply, and B is a parameter describing the aggregate size of the retail deposit market. For wholesale deposits, this specification is augmented to generate responses to a measure of the banking conglomerate's distress: $D_w(r_D^w) = (r_D^w)^{\vartheta_w} \log\left(\frac{E(a)}{k \cdot RWA}\right) B_w$, where $\vartheta_w < \vartheta$ is the elasticity of wholesale deposits, and B_w is a parameter describing the aggregate size of the wholesale deposit market. This functional form implies that the quantity of deposits supplied decreases as the buffer on the capital requirement decreases, and that there is a complete deposit flight ($D_w = 0$) when the capital requirement is binding. Finally, we assume that the management cost function is linear: $C(D, L) = c_L L + c_D D$, where $c_L, c_D > 0$.²⁸

We directly calibrate the probability of loan repayment p , the parameters of the deposit insurance assessment rate R_{min} and f_p , the capital requirement k , the risk weights ω_L and ω_M , the elasticities of deposit supply ϑ and ϑ_w , and the subsidiary equity share s_E .

In our model, one minus the probability of loan repayment is equivalent to the banks expected loss per dollar, which is equal to the probability of default multiplied by the loss given default (one minus the recovery rate). The recovery rate is calibrated to a standard value of 40 percent. In

²⁸Appendix E contains more details about these parametric choices.

Table 4: **Direct Calibration**

Parameter	Definition	Value	Source
p	Probability of Loan Repayment	0.99	World Bank
R_{min}, f_p	Insurance Premium Parameters	0.00025, 0.000224	FDIC
k	Capital Requirement	0.045	Basel II/III
ω_L, ω_M	Risk Weights	0.5, 0.1	Basel II/III
s_E	Subsidiary's Equity Share	0.11	Call Reports
ϑ, ϑ_w	Elasticities of Retail and Wholesale Deposit Supply	0.56, 0.16	Egan, Hortacsu, and Matvos (2017)

normal times, we calibrate the probability of default to a baseline value of 2.5 percent.²⁹ Hence we set the probability of loan repayment (in normal times) to $1 - 0.025 \times 0.6 = 0.99$.

Consistent with the assessment rates reported in Appendix Table E.1, we set $R_{min} = 0.025$ percent to match the minimum possible assessment rate in the scenario in which the bank lends in the interbank market ($M > 0$), while $f_p = 0.0224$ percent is set such that the bank will be assessed the maximum possible rate if its capital constraint binds and if it relies on the money markets for 95 percent or more of its funding.

We set the capital requirement to $k = 0.045$, which is the Basel III capital requirement for common equity over risk-weighted assets. The Basel II/Basel III regulation also gives guidelines on the weights used to compute risk-weighted assets: we choose $\omega_L = 0.5$, based on corporate loans, consumer loans, and residential mortgage exposures, and $\omega_M = 0.1$, based on risk weights for exposures to US depository institutions and credit unions.

Egan, Hortacsu, and Matvos (2017) provide structural estimates of the elasticity of supply for both the retail and wholesale deposit market in the United States. Since the way in which we model deposit supply is a special parametric form of what they estimate, we use their estimated elasticities and set $\vartheta = 0.56$ and $\vartheta_w = 0.16$.

Finally, in our dataset, a subsidiary's equity is on average 11 percent of the equity of the parent. As such, we set $s_E = 0.11$. Table 4 summarizes the parameters that we calibrate directly from the data. We also assume that these parameters are symmetric across the two countries.

In order to discipline the parameters of the banks' efficiency distribution, we start by observing that we cannot reject the hypothesis that the empirical distribution of interest revenues from loans

²⁹This is an approximate middle-range measure based on estimated probabilities of default on debt with credit ratings ranging from AAA to BB. Source: <http://www.newyorkfed.org/research/staff-reports/sr190.pdf>.

is log-normal. In Appendix F, we show that if the banks' efficiency distribution is log-normal with mean μ and standard deviation σ , the distribution of interest revenues from loans is approximately log-normal with mean $\mu_L = (\varepsilon - 1)\mu + \log \left[\left(\frac{\varepsilon c_L}{p(\varepsilon - 1)} \right)^{1-\varepsilon} A \right]$ and standard deviation $\sigma_L = (\varepsilon - 1)\sigma$. Maximum likelihood estimates of the parameters of the empirical distribution of interest revenues from loans deliver $\mu_L = 5.95$ and $\sigma_L = 1.93$. Hence, we model a bank's efficiency as a random draw from a log-normal distribution whose parameters μ and σ are calibrated such that:

$$\begin{aligned}\mu_L &= (\varepsilon - 1)\mu + \log \left[\left(\frac{\varepsilon c_L}{p(\varepsilon - 1)} \right)^{1-\varepsilon} A \right] = 5.96 \\ \sigma_L &= (\varepsilon - 1)\sigma = 1.93.\end{aligned}$$

Banks are heterogeneous, both in their efficiency level and in their equity endowment. Given that we observe nonbinding capital requirements in the data, we target a pre-crisis calibrated economy that is populated by unconstrained banks. The empirical distribution of equity is well-approximated by a log-normal distribution. Since the model abstracts from uses of equity other than loans, we assume that each bank's pre-crisis equity position is drawn from the same distribution as its loans, scaled by the capital requirement ($k=.045$) plus a 4 percent capital buffer.³⁰ We impose this buffer because the 2008–2010 period coincides with the implementation of stress testing. As banks were getting ready to undergo stress testing, their ratios of equity to risk-weighted assets increased in this period (see Appendix Figure D.6).

It remains to calibrate the relative management cost of loans versus deposits c_L/c_D , the elasticity of loan demand ε , the aggregate parameters of loan demand and deposit supply in each country (A, A^*, B, B^*, B_w , and B_w^*), and the fixed entry costs F_S and F_B . Since we cannot calibrate these parameters directly, we assume symmetry across countries and use the model to choose values for these parameters in order to match relevant moments from the data. More precisely, we assume that c_L/c_D and ε are symmetric across countries; that the relative sizes of loans, retail deposits, and wholesale deposits are the same across countries: $A/A^* = B/B^* = B_w/B_w^*$; and that fixed costs imply the same distribution of banks by type in each country. We are left with seven parameters to be calibrated ($c_L/c_D, \varepsilon, A^*, B^*, B_w^*, F_S$, and F_B), for which we choose the following set of target moments:

1. The relative size of the average subsidiary/ average branch, in terms of loans;

³⁰We parameterize the buffer as the average hypothetical worst loss that a bank under stress would experience. This assumption ensures that banks are “far” from the constraint in the pre-crisis equilibrium.

2. The relative size of the average subsidiary/ average branch, in terms of deposits;
3. The relative presence of foreign branches versus foreign subsidiaries;
4. The share of US loans extended by subsidiaries or branches of foreign banking organizations;
5. The average interest rate on retail deposits;
6. The average interest rate on loans;
7. The average interbank market rate.

The average foreign subsidiary in our data has loans equal to 3.87 times the loans of the average foreign branch, and deposits equal to 1.81 times the deposits of the average foreign branch. In our merged dataset, subsidiaries account for about one-third of US-based FBOs, and in turn FBOs account for about 30 percent of the total loans extended in the United States. As a target for the average interest rate paid on retail deposits, we use a 0.12 percent rate paid on checking accounts. We use LIBOR to pin down the value of the interbank market interest rate, 0.92 percent. Finally, in the model, loans encompass a variety of products, including mortgages, home equity, consumer, and commercial and industrial loans. We take an average of these rates in the data and set our target average interest rates on loans to 6.28 percent.

Table 5 reports the model-generated moments alongside the corresponding moments in the data. The model does a good job at replicating the relative presence of foreign branches versus subsidiaries and the overall size of the foreign banking sector. We underpredict the relative size of loans and deposits, possibly due to an imperfect fit of the parametric efficiency and size distributions. The target interest rates also fit reasonably well. The corresponding calibrated parameters are reported in Appendix Table E.1. The calibration reveals a sizable elasticity of loan demand, $\varepsilon = 4.4$, corresponding to an average mark-up of 31 percent. The reported fixed costs imply that the cost of opening a subsidiary (branch) is equal to 52.3 percent (82.3 percent) of the average per-period profits of the subsidiary (branch) itself.

Despite its conceptual simplicity, the model is difficult to compute because of the occasionally binding constraints and the consequent presence of corner solutions. As such, it is hard to talk precisely about identification. This said, numerical simulations of the model suggest that the relative number of subsidiaries versus branches and the share of loans issued by FBOs are very sensitive to the calibration of the fixed costs. Moments related to an FBO's relative size are important for quantifying the cost and market size parameters.

Table 5: **Moments: Model versus Data**

Parameters are matched to moments for the year 2010.

Moment	Data	Model
Nr. of Subsidiaries/Nr. of Branches	0.31	0.32
Share of US Loans issued by FBOs	30%	35%
Average Subsidiary Loans/Branch Loans	3.87	2.09
Average Subsidiary Deposits/Branch Deposits	1.81	1.39
Avg. Interest Rate On Deposits	0.12%	0.23%
LIBOR One-Year Interbank Rate	0.92%	0.84%
Avg. Interest Rate on Loans	6.28%	7.2%

4.2 Global Banks' Organization and the European Sovereign Debt Crisis

In this section, we use the calibrated model to perform a numerical exercise with the goal of illustrating the consequences of the European sovereign debt crisis for the global banking sector under different policy scenarios.

Starting from the baseline model economy, we simulate the European sovereign debt crisis as follows. We first solve the model with the baseline value of the probability of repayment (period 1). This amounts to computing optimal bank status, optimal values of loans, deposits, and interbank activity for each bank, and the interbank rate which clears the market. At the end of period 1, we introduce an unexpected drop in the probability of loan repayment, which has the effect of reducing revenues from loans, profits, and equity accumulation into the next period. In period 2, banks decide the optimal values of loans, deposits, and interbank activity, and whether to shut down their FBOs or keep them in operation.

We present the results of two specifications. In the baseline specification, which we refer to as a “3.6 percent default,” we decrease p to $p' = 0.964$. This change generates an average 10 percent reduction in equity accumulation, similar in size to what we see in the data (see Appendix Figure D.6). In an alternate specification, we impose a homogeneous 10 percent drop in equity at the end of the first period, with the same average effect, but balanced across all banks. In both exercises, the decline in bank equity reduces banks' buffers on capital requirements: $E(a)/RWA$ decreases. This decline differs across banks according to the concentration of loans in their portfolio allocations.

Table 6 displays the results of this exercise expressed in percentage changes from the baseline pre-crisis economy, reporting both partial equilibrium (keeping the interbank rate r_M constant)

Table 6: **Response to a Loan Repayment Shock in the Model**

Percentage changes relative to baseline pre-crisis economy.

	3.6% default		$E'(a) = 0.9 \times E(a)$	
	PE	IE	PE	IE
Average P-B Parent Equity	0.92	0.92	0.90	0.90
Average Branch Wholesale Deposits	0.91	0.88	0.88	0.87
Average P-B Transfers	1.08	1.13	1.09	1.11
Average Branch Loans	0.98	0.99	0.97	0.98
Average P-S Parent Equity	0.81	0.81	0.90	0.90
Average Subsidiary Retail Deposits	1	0.99	1	1.00
Average Subsidiary Loans	1	1.01	1	1.01
Aggregate Loans	0.96	0.96	0.96	0.96
Interbank Rate	0.86%	0.80%	0.86%	0.82%

and industry equilibrium effects (letting r_M adjust). The two exercises display similar qualitative effects. The drop in parent equity implies that wholesale deposit supply in US-based branches decreases due to depositors' fears about the health of the conglomerate. In our calibrated economy, the decline in wholesale deposits ranges from 9 percent to 13 percent across the specifications. While Table 6 reports mean changes, branches of large banks are the ones that experience more severe reductions in funding, like we observe in the data. As branches experience a funding shock, their demand for borrowing increases, and intrafirm borrowing from their parents ($T > 0$) increases from 8 percent to 13 percent across specifications. As we observe in the data, the need for extra funding is not entirely fulfilled by the intrafirm transfer, and loans decline moderately between 1 percent and 3 percent in the model, less than what we observe in the data. Also for loans, the decline is more pronounced in larger banks. At the same time, consistent with our empirical observations, the balance sheet of US-based subsidiaries is unaffected by the shock that occurs in Europe, despite the large drop in parents' equity.³¹ Finally, the shock has a sizable negative effect on aggregate loans in the United States, which experience a decline of 4 percent.

Our results on the decline in aggregate loans in the US should be interpreted with caution. On the one hand, in the model, branches are the only entities accepting wholesale deposits, so — following the deposit flight associated with the sovereign debt crisis— a source of funding disappears. Empirically, it is possible that those deposits were picked up by other banks. On the other hand, all banks in the model issue loans, but the deposit flight has the effect of reducing the loans issued

³¹The only changes in subsidiaries' loans and deposits are due to industry equilibrium responses to changes in the interbank rate.

Table 7: **Response to a Loan Repayment Shock Under Different Policy Scenarios**
Percentage changes relative to baseline pre-crisis economy.

	Baseline (3.6% default)	Only Subs	Only Branch	k=6%	Monetary Policy intervention
Average P-B Parent Equity	0.92	–	0.89	–	0.92
Average Branch Wholesale Deposits	0.88	–	0.88	–	0.79
Average P-B Transfers	1.13	–	1.03	–	1.39
Average Branch Loans	0.99	–	0.96	–	1.04
Average P-S Parent Equity	0.81	0.84	–	0.84	0.81
Average Subsidiary Retail Deposits	0.99	0.97	–	0.99	0.94
Average Subsidiary Loans	1.01	1.03	–	1.01	1.08
Aggregate Loans	0.96	1.02	0.94	0.99	1.02
Interbank Rate Change	–0.04%	–0.08%	–0.02%	–0.02%	–0.18%

by the biggest banks, so even if part of these loans are taken over by other banks, those other banks may not have the scale to absorb all the lost loans, driving the aggregate decline. While our data suggest that both local US banks and foreign branches of non-EU banks increase their loans after the crisis (see Appendix Table C.11), the fact that we have no information on the corresponding firm-level borrowing implies that we cannot apply the methodology of Amiti and Weinstein (2018) to disentangle whether the shock to EU banks had any aggregate effects in the US. Other papers in the literature, however, suggest that the banking sector is far from frictionless, so that it is hard to believe that the decline in lending by FBOs in the US was seamlessly absorbed by other banks, making the possibility of an aggregate decline in loans a likely outcome.³²

The exercise shown in Table 6 is consistent with the changes in the balance sheets of branches and subsidiaries that we documented in Section 2, and hence raises our confidence in using the model to evaluate changes in regulatory policies. To this end, Table 7 illustrates the effects of a loan repayment shock under several interesting counterfactual scenarios. All the results are reported as percentage changes relative to the pre-crisis scenario, in industry equilibrium.

The first column in Table 7 is the same as in Table 6, where the shock hits the baseline calibrated economy. In the second column, we compute the response to the shock in the counterfactual scenario in which only subsidiarization is allowed. As expected, since subsidiaries in the model are isolated from the shock in Europe, lending in the United States does not decline in this scenario, while the decline in deposits is due to industry equilibrium effects acting through interest rate changes. The

³²In the context of the Italian banking sector, for example, Hassan, Federico, and Rappoport (2019) show that there were frictions in the reallocation of credit from Italian banks exposed to the China shock to other banks, so that the shock had negative effects on aggregate credit supply in Italy.

“subsidiaries only” economy is associated with aggregate loans that are 6 percent higher than in the baseline case: since subsidiaries’ activities are independent from their parents, subsidization prevents the transmission of the European shock to the US economy. The third column shows the results of the opposite scenario, in which only branching is allowed. This is the scenario that has the most dramatic implications for the US banking sector: the shock generates a 12 percent decline in branch deposits, a 4 percent decline in branch lending, and a 6 percent decline in aggregate loans. This is a substantially larger effect when compared to the baseline case. This result is not surprising since branching is the organizational form that most facilitates the transmission of shocks across countries. It would be shortsighted, however, to conclude from this result that moving to a system where only subsidiaries are allowed is an effective way to minimize the negative effects of repayment probability shocks on aggregate lending. Figure 5 shows the effects of shocks of different magnitudes to the probability of repayment p in the counterfactual scenarios where only branches or only subsidiaries are allowed. The Figure illustrates that the “only branches” scenario generates the largest reduction in aggregate loans for relatively small shocks to the probability of repayment. When the shock to the probability of repayment is large, however, expected losses in the European market may induce parents of subsidiaries to shut down subsidiaries’ operations in the US, leading to a decline in aggregate loans in the US which is even larger than in the only-branches scenario. The next subsection shows suggestive evidence in support of this mechanism.

Going back to the counterfactuals, in the fourth column of Table 7, we report the effects of the shock under a counterfactual higher capital requirement: $k = 0.06$. In the calibrated economy, this has the effect of reducing the incentives for branching, so all global banks open subsidiaries and the results are very similar to the ones in the subsidiaries-only case. Finally, in the last column, we illustrate the effects of the shock under an ad hoc monetary policy intervention: after the equity decline induced by the default, the Government makes a “helicopter drop” equal to 40 percent of the aggregate M^+ . As a result of this intervention, the interbank rate decreases substantially, the transfers from parents to branches increases, and lending in the United States does not decline, contrary to the result in the baseline scenario.

Lastly, we quantify the magnitude of the monetary intervention needed to dampen the negative effects on lending driven by shocks to the probability of repayment. The upper panel of Figure 6 shows the decline in aggregate loans in the US associated with different magnitudes of the probability of repayment p , for different values of the interbank rate r_M , following a traditional narrative of central bank interest rate targeting. Obviously, larger shocks to p are associated with larger

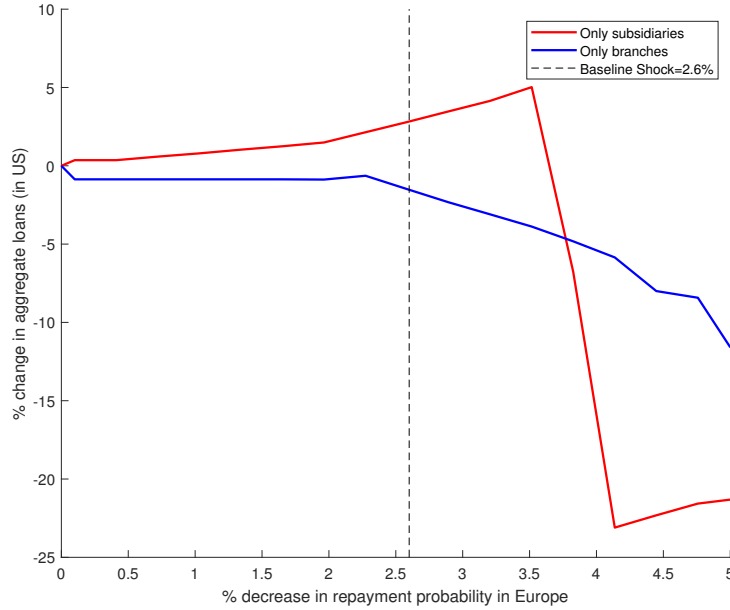


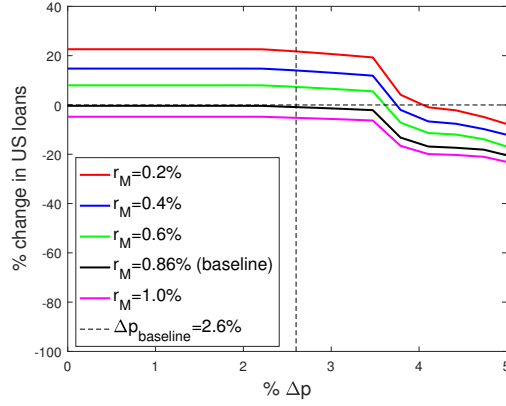
Figure 5: **Response of US aggregate loans to different loan repayment shocks in Europe.** Branches-only and subsidiaries-only scenario.

Source: Authors' calculations.

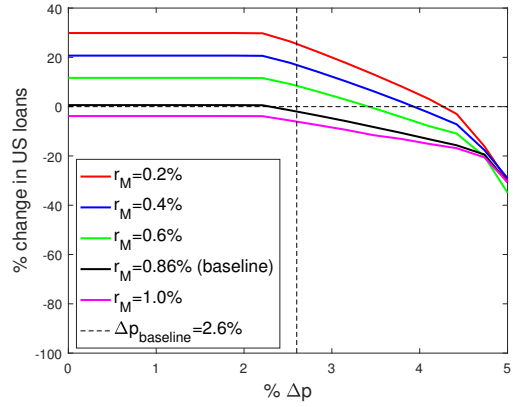
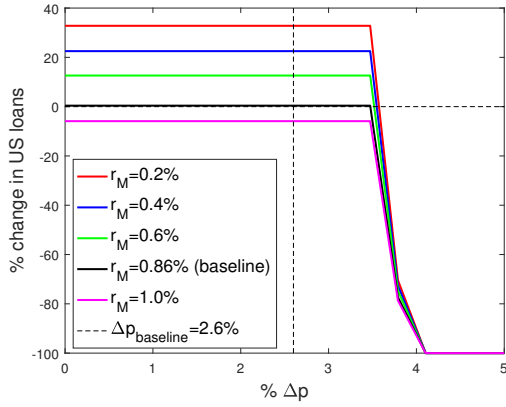
declines in loans in the US. Aggressive monetary policy can help mitigate the decline in loans: for a large decline in the probability of repayment of –say– four percent, a reduction in r_M from 0.84% to 0.2% is needed in order to maintain the pre-crisis level of lending. The lower panels of Figure 6 illustrate the role of subsidiaries and branches of European banks in the decline of loans. While the decline in branches' loans is gradual (driven by the effect of the shock on the whole corporation's equity over assets' ratio), the decline in loans issued by subsidiaries is purely driven by their exit. For this reason, ad-hoc monetary interventions may limit the reduction in branches' operations during episodes of crisis, but have little effect on limiting subsidiaries' exit.

4.3 The International Transmission of Shocks: Intensive versus Extensive Margin Adjustments

While the analysis so far has focused on the European sovereign debt crisis, the structural model we developed in this paper allows us to think more broadly about how banks respond to episodes of crisis and the aggregate consequences for the international transmission of shocks. The counterfactual analysis has shown that, following the shock to domestic equity, profits drop across the



(a) All US loans



(b) Loans by US subsidiaries of European banks (c) Loans by US branches of European banks

Figure 6: **Response of US aggregate loans to different loan repayment shocks in Europe.** Effect of ad-hoc monetary policy interventions. Panel 6a includes loans from US national banks and from subsidiaries and branches of European banks.

Source: Authors' calculations.

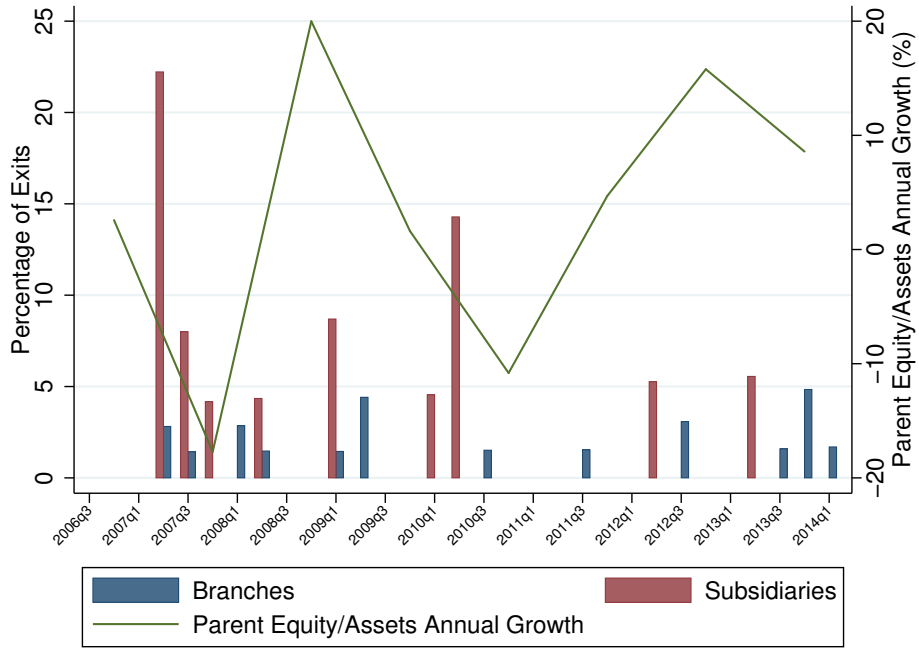


Figure 7: **Exit and Equity Dynamics in the Data**

Source: S&P Global Market Intelligence and Call Reports.

distribution of banks, but banks with differing global status show different responses. In particular, the fact that subsidiaries are separately capitalized limits the ability of parent-subsidiary conglomerates to reallocate resources internally, so the global profits of these banks are the most affected by the shock. On the other hand, the internal capital market that allows parents and branches to easily reallocate resources within the conglomerate across countries implies that their global profits decline less than those of the parent-subsidiary pairs.

This implies that—for large enough shocks—it is more likely that a parent decides to shut down a subsidiary rather than a branch. Figure 7 shows suggestive evidence of this mechanism in the data. We superimpose the time series of parent equity-over-assets growth on a histogram reporting the exit rates of US-based branches and subsidiaries of European banks. It is clear from the figure that a) compared to branches, subsidiaries are unconditionally more likely to exit (consistent with the presence of frictions to asset repatriation), and b) periods of more pronounced exits tend to be periods when a parent’s equity position declines.

Figure 7 provides external validity to the mechanism put forward in this paper. We can use these insights to evaluate the pros and cons of how the two different organizational forms may act

as vehicles for shock transmission across countries. On the one hand, the counterfactual analysis of our model economy, based on intensive margin changes, shows that branches transmit shocks across countries through their internal capital market. However, the same internal capital market allows for international intrabank reallocations that may minimize the global consequences of a negative shock. On the other hand, subsidiaries are isolated from shocks to their parents in terms of their balance sheet adjustments on the intensive margin, but the presence of frictions to the internal capital market among the different units of the corporation makes global banks that own subsidiaries less resilient to the shock.

These different responses on the intensive and extensive margins make the task of regulating global banks extremely difficult. Our analysis reveals that regulations have to balance a trade-off between important policy priorities: limiting the transmission of shocks across countries and promoting the stability of large, globally important banks.

5 Conclusions

In this paper, we studied how different organizational forms of global banking shape the transmission of shocks across countries. Our analysis focused on banks' endogenous choice to serve foreign markets via branching or subsidiarization.

We started by establishing a series of stylized facts about the cross-section of global banks and their response to the European sovereign debt crisis. Informed by the data, we developed a micro-founded structural model of foreign entry in the banking sector. The model explicitly distinguishes foreign banking institutions by their mode of operations, which is endogenous and responds to differences in cost structure, management efficiency, and banking regulations. This feature of the model allows us to highlight the economic channels through which banks' mode of operations matters for the extent of the transmission of various shocks across countries.

In order to study the effects of the European sovereign debt crisis through the lens of the theory, we calibrated the model and used it to perform a series of exercises that shed light on the implications of the current US regulatory framework for the extent of shock transmission. Our most important finding clarifies the relationship between global banks' organizational structure and shock transmission. We show that subsidiarization isolates a global bank's balance sheets by location; hence, subsidiarization minimizes contagion. However, subsidiarization is associated

with a limited internal capital market between parent and affiliate, so that the parent does not have instruments to dampen the global effect of shocks, resulting in possible reorganizations and exits from the foreign market, especially when shocks are severe. Conversely, branching can take advantage of an internal capital market within the corporation and –by smoothing the effect of a shock across countries– reduce its global impact.

We see this paper as the starting point of a research agenda whose goal is to use careful quantitative analysis to inform the banking policy discussion. There are many important aspects of this problem which go beyond the scope of this paper, and we plan to tackle some of these issues in future research.

References

- Aldasoro, Iñaki, Torsten Ehlers, and Egemen Eren. 2019. “Global Banks, Dollar Funding, and Regulation.” Tech. Rep. 708. Bank of International Settlements.
- Amiti, Mary, and David Weinstein. 2018. “How Much Do Idiosyncratic Bank Shocks Affect Investment? Evidence from Matched Bank-Firm Loan Data.” *Journal of Political Economy* 126(2): 525–587.
- Berger, Allen N., and Loretta J. Mester. 1997. “Inside the black box: What explains differences in the efficiencies of financial institutions?” *Journal of Banking & Finance* 21(7): 895 – 947. ISSN 0378-4266. doi:[https://doi.org/10.1016/S0378-4266\(97\)00010-1](https://doi.org/10.1016/S0378-4266(97)00010-1). Available at <http://www.sciencedirect.com/science/article/pii/S0378426697000101>.
- Bernard, Andrew B., J. Bradford Jensen, and Peter K. Schott. 2009. “Importers, Exporters, and Multinationals: a Portrait of Firms in the U.S. that Trade Goods.” In Timothy Dunne and J. Bradford Jensen and Mark J. Roberts (eds.), *Producer Dynamics: New Evidence from Micro Data*. Chicago: University of Chicago Press.
- Berrospide, Jose M, Ricardo Correa, Linda S Goldberg, and Friederike Niepmann. 2017. “International Banking and Cross-Border Effects of Regulation: Lessons from the United States.” *International Journal of Central Banking* 13(2): 435–476.
- Bremus, Franziska, Claudia M. Buch, Katheryn N. Russ, and Monika Schnitzer. 2013. “Big Banks and Macroeconomic Outcomes: Theory and Cross-Country Evidence of Granularity.” Working Paper 19093. National Bureau of Economic Research.

- Cerutti, Eugenio, Giovanni Dell’Ariccia, and Maria Soledad Martínez Pería. 2007. “How Banks go Abroad: Branches or Subsidiaries?” *Journal of Banking and Finance* 31(6): 1669–1692.
- Cetorelli, Nicola, and Linda Goldberg. 2011. “Global Banks and International Shock Transmission: Evidence from the Crisis.” *IMF Economic Review* 59(1): 41–76.
- Cetorelli, Nicola, and Linda Goldberg. 2012a. “Banking Globalization and Monetary Transmission.” *Journal of Finance* 67(5): 1811–1843.
- Cetorelli, Nicola, and Linda Goldberg. 2012b. “Follow the Money: Quantifying Domestic Effects of Foreign Bank Shocks in the Great Recession.” *American Economic Review: Papers and Proceedings* 102(3): 213–218.
- Claessens, Stijn, Asli Demirgüç-Kunt, and Harry Huizinga. 2001. “How Does Foreign Entry Affect Domestic Banking Markets?” *Journal of Banking and Finance* 25(5): 891–911.
- Corbae, Dean, and Pablo D’Erasmus. 2013. “A Quantitative Model of Banking Industry Dynamics.” *Working Paper, University of Wisconsin Madison*.
- Correa, Ricardo, Horacio Sapriza, and Andrei Zlate. 2016. “Liquidity Shocks, Dollar Funding Costs, and the Bank Lending Channel during the European Sovereign Crisis.” *Federal Reserve Bank of Boston RPA Working Paper* (16/04).
- Danisewicz, Piotr, Dennis Reinhardt, and Rhiannon Sowerbutts. 2017. “On a Tight Leash: Does Bank Organizational Structure Matter for Macroprudential Spillovers?” *Journal of International Economics* 109: 174–194.
- de Blas, Beatriz, and Katheryn N. Russ. 2013. “All Banks Great, Small, and Global: Loan Pricing and Foreign Competition.” *International Review of Economics and Finance* 26: 4–24.
- Dell’Ariccia, Giovanni, and Robert Marquez. 2010. “Risk and the Corporate Structure of Banks.” *Journal of Finance* 65(3): 1075–1096.
- Eaton, Jonathan. 1994. “Cross-Border Banking.” Working Paper 4686. National Bureau of Economic Research.
- Egan, Mark, Ali Hortacsu, and Gregor Matvos. 2017. “Deposit Competition and Financial Fragility: Evidence from the U.S. Banking Sector.” *American Economic Review* 107(1): 169–216.

- Feng, Guohua, and Apostolos Serletis. 2010. "Efficiency, technical change, and returns to scale in large US banks: Panel data evidence from an output distance function satisfying theoretical regularity." *Journal of Banking & Finance* 34(1): 127–138.
Available at <https://ideas.repec.org/a/eee/jbfina/v34y2010i1p127-138.html>.
- Fiechter, Jonathan, İnci Ötoker Robe, Anna Ilyina, Michael Hsu, André Santos, and Jay Surti. 2011. "Subsidiaries or Branches: Does One Size Fit All?" *IMF Staff Discussion Note* (11/04).
- Goldberg, Linda. 2009. "Understanding Banking Sector Globalization." *International Monetary Fund Staff Papers* 56: 171–197.
- Hassan, Fadi, Stefano Federico, and Veronica Rappoport. 2019. "Trade Shocks and Capital Reallocation." CEP Discussion Paper 1649.
- Hughes, Joseph P., and Loretta J. Mester. 1998. "Bank Capitalization and Cost: Evidence of Scale Economies in Risk Management and Signaling." *The Review of Economics and Statistics* 80(2): 314–325. doi:10.1162/003465398557401.
Available at <https://doi.org/10.1162/003465398557401>.
- Ivashina, Victoria, David S. Scharfstein, and Jeremy C. Stein. 2015. "Dollar Funding and the Lending Behavior of Global Banks*." *The Quarterly Journal of Economics* 130(3): 1241–1281.
- Klein, Michael. 1971. "A Theory of the Banking Firm." *Journal of Money, Credit and Banking* 3(2): 205–218.
- Monti, Mario. 1972. "Deposit, Credit, and Interest Rate Determination under Alternative Bank Objectives." In G.P. Szego and K. Shell (eds.), *Mathematical Methods in Investment and Finance*. Amsterdam: North Holland.
- Niepmann, Friederike. 2015. "Banking Across Borders." *Journal of International Economics* 96(2): 244–265.
- Niepmann, Friederike. 2018. "Banking Across Borders with Heterogeneous Banks." *CEPR Discussion Discussion Paper* (DP12607).
- Ongena, Steven, Ann L. Owen, and Judit Temesvary. 2018. "A Global Lending Channel Unplugged? Does U.S. Monetary Policy Affect Cross-border and Affiliate Lending by Global U.S. Banks?" *Finance and Economics Discussion Series 2018-008*. Board of Governors of the Federal Reserve System.

Peek, Joe, and Eric S. Rosengren. 2000. “Collateral Damage: Effects of the Japanese Bank Crisis on Real Activity in the United States.” *American Economic Review* 90(1): 30–45.

Wheelock, David C., and Paul W. Wilson. 2009. “Are U.S. banks too large?” Tech. rep.

Appendix

A The Regulatory Framework: History and Current Status

The US Regulatory Framework has a long and complex history. We mention here those provisions that are relevant for the treatment of banks in our model.

International Banking Act of 1978 (IBA)

The IBA instituted the principle of national treatment, subjecting foreign banks to the same regulatory restrictions and benefits as domestic banks whenever possible. Prior to the IBA, the branches of foreign banks were not subject to federal restrictions on US banks, such as those on interstate banking (McFadden) and the separation of commercial and investment operations (Glass-Steagall). Foreign branches were not required to meet the reserve requirements of the Federal Reserve. However, they were ineligible for FDIC insurance, making it hard for them to compete for retail deposits. Foreign subsidiaries were already under federal regulatory authority. The IBA required foreign banks to choose a home state, then they became subject to the laws of that state and could not set up branches or subsidiaries in any other states. They also became subject to federal laws, which ended the competitive advantages they previously had over domestic banks. Under the IBA, all foreign banks that accepted retail deposits were now required to become part of the FDIC insurance system, but they could opt out of this requirement by not accepting retail deposits. These foreign branches that accepted retail deposits were now subject to the reserve requirements set by the Federal Reserve and subject to their examinations or that of a similar banking authority.

Depository Institutions Deregulation and Monetary Control Act (DIDMCA) of 1980

The DIDMCA expanded the influence of the Federal Reserve to all depository institutions, as opposed to only the approximately 40 percent of banks that were currently members of the Federal Reserve System. This meant nonmember banks had to meet the reserve requirements and assets and liabilities reporting requirements set by the Federal Reserve, similar to how the IBA applied these requirements to the US operations of foreign banks. These new requirements also allowed all depository institutions to enjoy the benefits of membership in the Federal Reserve System, including use of the discount window, a first for both foreign banks and nonmember banks.

Foreign Bank Supervision Enhancement Act (FBSEA) of 1991

The FBSEA, part of the Federal Deposit Insurance Corporation Improvement Act of 1991, prohibited new foreign bank branches in the United States from having access to the FDIC system and deposit insurance. This created a major operating difference from a foreign bank opening a new subsidiary, which was still able to offer deposit insurance. The FBSEA also expanded the Federal Reserve's authority to supervise and regulate foreign banks. The Federal Reserve could now examine any foreign-owned banking entities in the United States, which were now required to be examined annually by state or federal regulators, and granted the Federal Reserve greater privilege to access information about the parent companies. The act also allowed the Federal Reserve to terminate any unsafe foreign banking entity, whether it had a state or federal licence. To form a new banking entity in the United States, a foreign bank now needed the approval of the Federal Reserve independently of the organizational choice between a branch or a subsidiary.

Riegle-Neal Interstate Banking and Branching Efficiency Act (IBBEA) of 1994

The IBBEA overturned the McFadden Act (1927) by allowing interstate banking. Prior to this act, many states had passed laws allowing banks based in other states to operate within their state under specified conditions. The IBBEA set up a national framework to allow interstate banking under a standardized set of rules. For foreign-owned banks, this legislation meant a parent bank could set up branches in multiple states, or a subsidiary would be allowed to open branches in multiple states.

New Intermediate Holding Company Regulation of 2016

Starting in July, 2016, a foreign bank organization (FBO) with more than \$50bn in US assets is required to designate an intermediate holding company (IHC) that holds the FBO’s ownership interest in any of its US subsidiaries. The IHC is then subject to the regulatory requirements of any US bank holding company. Interestingly enough, foreign branches are left out of the IHC regulation and branch assets do not count towards the regulatory thresholds, nor are branches subject to US regulatory requirements like the Dodd-Frank Act’s stress testing, Basel III capital requirements, etc. Foreign branches operating in the United States remain subject to regulation in their home country.

B Data Description

US Office-Level Data

Our office-level data comes from two different forms, FFIEC 031 and FFIEC 002. FFIEC 031 is formally known as the Consolidated Reports of Condition and Income for a Bank with Domestic and Foreign Offices, often referred to as Call Reports. This is our source for data on the financial positions of foreign-owned subsidiaries operating in the United States. FFIEC 002 is formally known as the Report of Assets and Liabilities of US Branches and Agencies of Foreign Banks, and is our source for the data on the financial positions of foreign-owned branches.

We complement this data with the Federal Reserve Board’s Structure and Share Data for US Offices of Foreign Banks. The Structure Data is US office-level data of foreign banking organizations covering selected variables from the FFIEC 031 and FFIEC 002, including the “top-tier” foreign parent bank and country, as well as US office type and assets. This source allows us to identify the two types of organizational forms that are the object of this study, branches and subsidiaries. We define uninsured federal branches and uninsured state branches as “branches.” “Subsidiaries” encompass state member banks, state nonmember banks, national banks, state savings banks, and federal savings banks. The Share Data contains summary statistics on the fraction and level of total assets, commercial and industrial loans, total loans or deposits in domestic-owned banks, foreign-owned banks (subsidiaries) and foreign-owned branches and agencies.

Balance sheet data for subsidiaries in our sample come from the form FFIEC 031. Specifically,

we construct retail deposits as the sum of *rconf049*, the amount of deposits (excluding retirement accounts) of \$250,000 or less, and *rconf045*, the amount of retirement deposit accounts of \$250,000 or less. Wholesale deposits are given by the sum of *rconf051*, the amount of deposits (excluding retirement) above \$250,000, and *rconf047*, the amount of retirement deposit accounts above \$250,000. The sum of wholesale and retail deposits gives our measure of total deposits. Finally, *rcfd2122* (loans and leases net of unearned income) measures total net loans.

Form FFIEC 002 provides additional information on foreign-owned branches. Specifically, wholesale deposits are given by *rcon1653* (total deposits and credit balances in transaction accounts of the branch), while *rcfd2122* (loans and leases net of unearned income) is our measure of total net loans. The intrabank transfer is computed using data on the flow of funds between parent and branches: *rcfd2944* reports the balance due to their parent institution and *rcfd2154* the balance due from their parent institution.

European Bank-Level Data

S&P Global Market Intelligence (formerly SNL Financial) is our data source on European banks. Using bank names, we were able to match this data with the European parents of US offices in the Structure data: there are 56 European “top-tier” parent banks in our matched dataset. The variables we use from S&P Global Market Intelligence are total assets (S&P Key field 132264), total deposits (132288), total net loans (132214), interest earned on loans (132532) and interest expense on deposits (133820.)

Exposure Data

Exposures for “top-tier” parent banks are contained in the European Banking Authority (EBA) stress test data, which reports the total value of each bank’s holdings of sovereign debt in each European country. Only 50 of our 56 European parents participated in these stress tests. For this reason, we construct two different definitions of a parent bank’s exposure to the European sovereign debt crisis. According to our baseline definition, any parent bank with above median holdings of government debt from Greece, Italy, Ireland, Portugal, or Spain is considered exposed to the crisis, while all other parent banks are not. An alternative definition considers any parent bank in a country using the euro to be exposed, while all other parent banks are not. This second definition does not require EBA stress test data.

C Empirical Evidence: Additional Tables

Table C.1: List of European Parents in Our Sample, Data for 2010

Bank Name	No. of Subs	No. of Branches	% of Assets in Subs.	% of Assets in Branches
Allianz Se	0	2	0	100
Allied Irish Banks, P.L.C.	2	1	96.11	3.89
Banco Bilbao Vizcaya Argentaria, S.A.	1	1	72.31	27.69
Banco Comercial Portugues, S.A.	1	0	100	0
Banco De Sabadell, S.A.	2	1	64.92	35.08
Banco Popular Espanol, S.A.	1	0	100	0
Banco Santander, S.A.	1	3	72.26	27.74
Barclays Plc	1	2	14.08	85.92
Bayerische Landesbank	0	1	0	100
BNP Paribas	2	5	36.15	63.85
BPCE	0	1	0	100
Caisse Federale De Credit Mutuel	0	1	0	100
Caixa De Aforros De Vigo, Ourense E Pontevedra	0	1	0	100
Caixa Geral De Depositos, S.A.	0	1	0	100
Bancaja	0	1	0	100
Caja De Ahorros Y Monte De Piedad De Madrid	1	0	100	0
Cooperatieve Centrale Raiffeisen-Boerenleenbank B.A.	1	1	12.09	87.91
Credit Agricole Corporate And Investment Bank	0	2	0	100
Credit Suisse Group	0	1	0	100
Deutsche Bank Aktiengesellschaft	2	1	26.93	73.07
Dexia S.A.	0	1	0	100
DNB Nor Asa	0	1	0	100
DZ Bank Ag Deutsche Zentral-Genossenschaftsbank	0	1	0	100
Erste Group Bank Ag	0	1	0	100
Espirito Santo Control S.A.	1	2	24.14	75.86
Fondazione Monte Dei Paschi Di Siena	0	1	0	100
Governor And Company Of The Bank Of Ireland, The	0	1	0	100
HSBC Holdings Plc	3	0	100	0
HSH Nordbank Ag	0	1	0	100
Hypo Real Estate Holding Ag	0	1	0	100
Intesa Sanpaolo S.P.A.	0	1	0	100
KBC Bank Nv	0	1	0	100
Landesbank Baden-Wuerttemberg	0	1	0	100
Landesbank Hessen-Thuringen Girozentrale	0	1	0	100

Continued on next page

Table C.1 – *Continued from previous page*

Bank Name	No. of Subs	No. of Branches	% of Assets in Subs.	% of Assets in Branches
Lloyds Banking Group Plc	0	2	0	100
Niedersaechsischer Sparkassen- Und Giroverband	0	1	0	100
Nordea Bank Ab (Publ)	0	2	0	100
Nrw.Bank	0	1	0	100
Piraeus Bank S.A.	1	0	100	0
Royal Bank Of Scotland Group Plc, The	2	4	62.66	37.34
Skandinaviska Enskilda Banken Ab (Publ)	0	1	0	100
Societe Generale	0	2	0	100
Standard Chartered Plc	0	2	0	100
Svenska Handelsbanken Ab (Publ)	0	1	0	100
Swedbank Ab	0	1	0	100
UBS Ag	1	7	32.48	67.52
Unicredit S.P.A.	0	2	0	100

D Empirical Evidence: Additional Figures

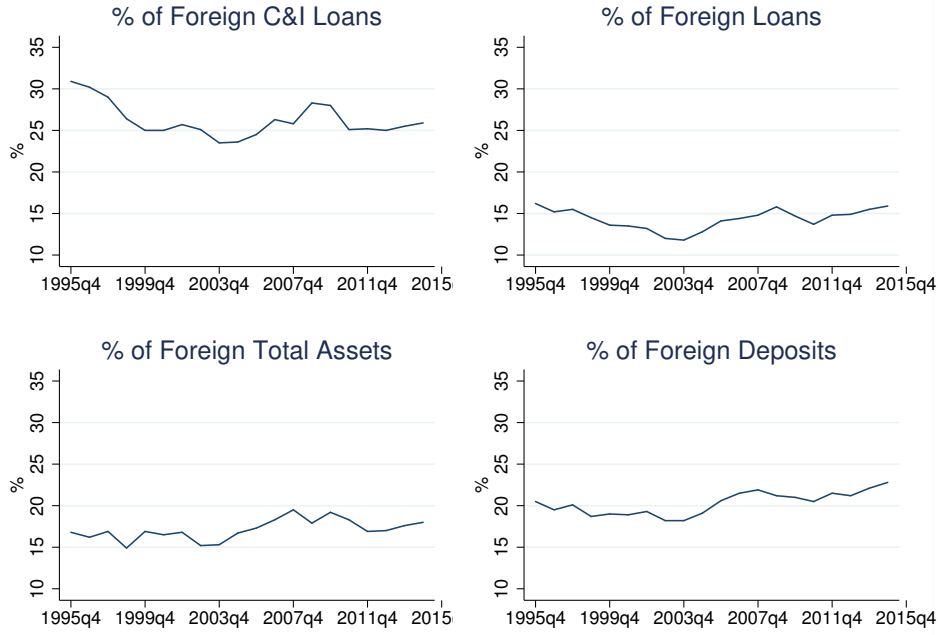


Figure D.1: **Percentage of Assets, Commercial and Industrial Loans, Total Loans, and Deposits Held in FBOs in the United States**

Source: Structure Data for US Offices of Foreign Banking Organizations - Selected Assets and Liabilities of Domestic and foreign-owned US Commercial Banks plus US Branches and Agencies of Foreign Banks.

E Details on the Construction and Solution of the Model

E.1 Modeling Deposit Insurance

As described in Section 3, all banks accepting retail deposits in the United States have to pay deposit insurance to the Federal Deposit Insurance Corporation (FDIC), an independent US agency, created by Congress, in charge of insuring deposits. The main goal of deposit insurance is to prevent bank runs. Deposit insurance also generates moral hazard problems—since bank deposits are insured, bankers have incentives to engage in riskier behavior. The classic way to address this moral hazard problem and ultimately reduce the risks of bankruptcies is to price the deposit insurance at the actuarially fair rate. Thus, in order to achieve a certain level of actuarial fairness, modern deposit insurance is not paid as a flat fee on insured deposits, but rather is assessed based on the risk profile of a bank’s assets and funding sources. Under the Dodd-Frank Act, the FDIC assessment is applied to all assets of a bank less its tangible equity (the assessment base), so banks pay additional

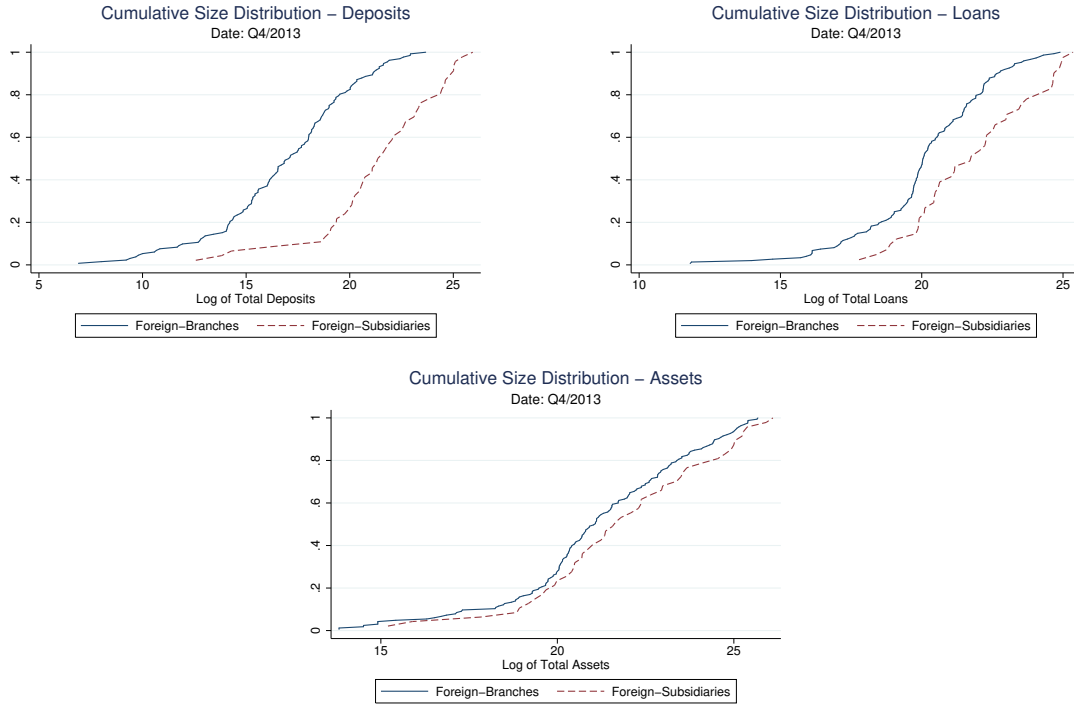


Figure D.2: **Size Distributions**

Cumulative distribution functions for deposits, loans, and assets, respectively, held in foreign-owned subsidiaries and branches in 2013:Q4.

Source: US Structure Data for US Offices of Foreign Banking Organizations - Selected Assets and Liabilities of Domestic and Foreign-Owned US Commercial Banks plus US Branches and Agencies of Foreign Banks.

insurance even if their source of additional funding is not itself insured.

Small banks are classified based on their riskiness according to the CAMELS rating system of broad risk measures and assigned a risk category based on these measures.¹ Table E.1 reports the current rates by risk-category:

Larger banks and complex institutions are subject to the same total range of rates, but are assessed based on the following three factors. The CAMELS rating constitutes 30 percent of the bank's assessment rate, and the rest of the rate is calculated according to a formula based on factors related to asset risk and funding risk (50 and 20 percent, respectively). The asset risk measures generally punish higher leverage, riskier classes of assets, and asset concentration in a particular sector. The funding risk measures generally reward having a larger share of funding from insured

¹CAMELS is a supervisory rating system developed by US regulatory agencies in which capital adequacy, assets, management capability, earnings, liquidity, and sensitivity to market risk are assigned a rating from 1 (best) to 5 (worst). A rating of 5 indicates that the bank's problems are beyond management's ability to control or correct.

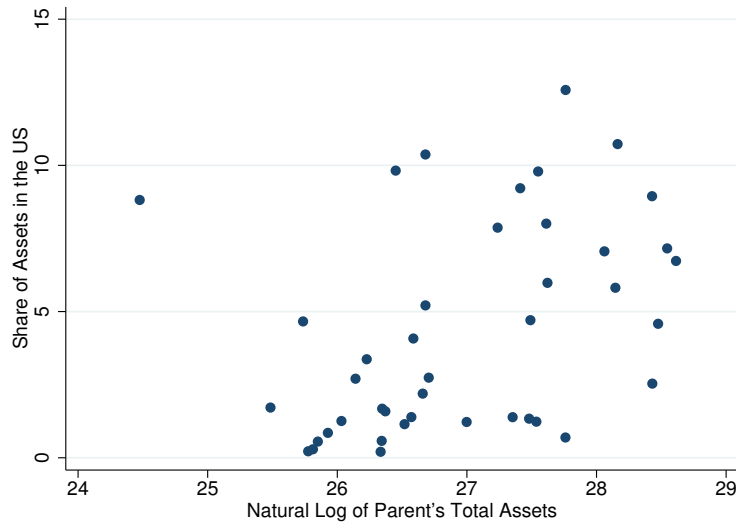


Figure D.3: **Size of Domestic versus Foreign Assets**

Share of US assets in a parent's total assets versus the parent's size.

Source: S&P Global Market Intelligence data for top-tier European parents of US branches and subsidiaries, 2013.

deposits and holding highly liquid assets, on the theory that such funding is less likely to flee in crisis. These formulaic measures are similar in nature to the categories assessed subjectively in the CAMELS rating.

Our proposed reduced-form expression in equation (4) follows the principles of the FDIC Current Assessment Rate Calculator for Highly Complex Institutions, available at: <https://www.fdic.gov/deposit/insurance/calculator.html>.

The highly complex institutions pricing scorecard lists three criteria as building blocks of the CAMELS rating system: 1) the ability to withstand asset-related stress; 2) the ability to withstand funding-related stress; and 3) potential loss severity. Our formulation follows the second criterion, the ability to withstand funding-related stress:

$$IP(D, L, M) = \underbrace{f_p(D, M^-, E(a))}_{\text{assessment rate}} \cdot \underbrace{(L + M^+ - E(a))}_{\text{assessment base}} \equiv \left[R_{min} + f_p \cdot \frac{M^-}{E(a)} \right] \cdot (L + M^+ - E(a)), \quad (\text{E.1})$$

where $R_{min} > 0$ and $f_p > 0$. We abstract from the exact formulas for calculating the FDIC assessment rate, and adopt a functional form that results in an insurance premium that is higher the more that a bank resorts to the interbank borrowing as a share of bank equity in order to fund

its activities. This formula applies to local banks, subsidiaries, and parents of subsidiaries. The analogous formula for parents of branches includes both parent and branch loans in its assessment base.

E.2 The Bank's Profit Maximization Problem: A Parametric Example

In order to illustrate some properties of the bank's problem, in this section we resort to a parametric example (which exploits the same parameterization we use in the calibration).

Like in the calibration, we assume a constant elasticity loan demand function: $L(r_L) = r_L^{-\varepsilon} A$, where $\varepsilon > 1$ is the elasticity of loan demand, and A is a parameter describing the aggregate size of the market for loans. Similarly, we assume a constant elasticity retail deposit supply function: $D(r_D) = r_D^{\vartheta} B$, where $\vartheta > 0$ is the elasticity of retail deposit supply, and B is a parameter describing the aggregate size of the retail deposits market. We also assume a linear separable management cost function: $C(D, L) = c_L L + c_D D$, where $c_L, c_D > 0$. The deposit insurance premium takes the functional form described in the previous section. Under these assumptions, if a local bank is a lender in the interbank market ($M > 0$), its optimal loans and deposits in the unconstrained equilibrium are given by:²

$$L_N^u(a) = \left\{ \frac{\varepsilon}{p(\varepsilon - 1)} [(1 - p) + r_M + ac_L] \right\}^{-\varepsilon} A \quad (\text{E.2})$$

$$D_N^u(a) = \left\{ \frac{\vartheta}{(\vartheta + 1)} [r_M - ac_D - R_{min}] \right\}^{\vartheta} B, \quad (\text{E.3})$$

and maximal profits are:

$$\pi_N(a) = r_M E(a) + H_1(\varepsilon, p) [(1 - p) + r_M + ac_L]^{1-\varepsilon} A + H_2(\vartheta) (r_M - ac_D - R_{min})^{1+\vartheta} B, \quad (\text{E.4})$$

where $H_1(\cdot)$ and $H_2(\cdot)$ are functions of model parameters only. Equation (E.4) shows that a bank's optimal profits are increasing in bank efficiency $1/a$ and in the bank's equity $E(a)$.

²The intuition that this special example conveys is the same in the case in which a bank is a borrower in the interbank market, just less transparent algebraically.

E.3 Constrained Equilibrium in Local Banks

In the model, the constrained equilibrium has two possible configurations, depending on whether the bank borrows or lends in the interbank market. We describe both configurations using the parameterization introduced in the previous section.

1. *Constrained equilibrium with interbank lending.*

If the bank is a lender in the unconstrained equilibrium ($M_N^u > 0$), it could be also a lender in the constrained one. In this constrained equilibrium scenario, a bank's loans to its customers and to the interbank market enter the expression for risk-weighted assets, so that $M_N^c(a) = \frac{E(a)}{\omega_M k} - \frac{\omega_L}{\omega_M} L_N^c$. Deposits adjust to clear the resource constraint: $D_N^c(a) = \left(1 - \frac{\omega_L}{\omega_M}\right) L_N^c - \left(1 - \frac{1}{\omega_M k}\right) E(a)$, while constrained loans solve:

$$L_N^c(a) = \left\{ \frac{\varepsilon}{p(\varepsilon - 1)} \left[(1 - p) + \frac{\omega_L}{\omega_M} r_M + ac_L + (ac_D + R_{min}) \left(1 - \frac{\omega_L}{\omega_M}\right) + \dots \right. \right. \\ \left. \left. \frac{\vartheta}{\vartheta + 1} \left[\left(1 - \frac{\omega_L}{\omega_M}\right) L_N^c - \left(1 - \frac{1}{\omega_M k}\right) E(a) \right]^{1/\vartheta} B^{-1/\vartheta} \left(1 - \frac{\omega_L}{\omega_M}\right) \right] \right\}^{-\varepsilon} A. \quad (\text{E.5})$$

If the resulting $M^c > 0$, these conditions characterize the constrained equilibrium. Otherwise, the constrained equilibrium will be one that displays interbank borrowing.

2. *Constrained equilibrium with interbank borrowing.*

If the constrained equilibrium found above is inconsistent, or if the bank is a borrower in the unconstrained equilibrium, it will also be a borrower in the constrained equilibrium.

Under this scenario, the amount of loans is the maximum that the capital requirement allows:

$$L_N^c(a) = E(a)/(\omega_L k), \quad (\text{E.6})$$

where deposits adjust depending on the first-order condition, and interbank borrowing clears the resource requirement:

$$M_N^c = D_N^c + \left(1 - \frac{1}{\omega_L k}\right) E. \quad (\text{E.7})$$

E.4 Modeling the Wholesale Deposits Supply

Egan, Hortacsu, and Matvos (2017) show that the demand for uninsured wholesale deposits is less

elastic than the one for insured retail deposits, and that wholesale deposits are sensitive to some measure of the banking organization “distress.” We rely on their estimates and embed them in a parametric form of wholesale deposits supply that is consistent with their findings. Our model-based measure of bank distress is inversely related to the additional buffer on capital requirement that banks hold in normal times, given by equity over risk-weighted assets (RWA) divided by the capital requirement, k . When $\frac{E(a)}{k \cdot RWA} = 1$, the capital requirement is binding and the bank experiences maximum distress, resulting in a flight of wholesale deposits. Distress decreases as $\frac{E(a)}{k \cdot RWA}$ grows bigger than one.

We choose the following functional form for the demand of wholesale deposits:

$$D_w^* = (r_D^{*w})^{\vartheta_w} \log \left(\frac{E(a)}{k \cdot RWA} \right) B, \quad (\text{E.8})$$

where $\vartheta_w < \vartheta$ is the elasticity of wholesale deposits, and B_w is a parameter describing the aggregate size of the wholesale deposits market. This functional form implies that the quantity of deposits supplied falls as the buffer on the capital requirement decreases, and that there is a complete deposits flight ($D_w^* = 0$) when the capital requirement is binding.

For comparison purposes, Figure E.1 plots the retail deposit supply and the wholesale deposit supply for different values of the buffer on capital requirement.

F Details of the Calibration Procedure

F.1 Calibrating Banks’ Efficiency Distribution

We start by assessing which parametric distribution better approximates the empirical distribution of interest revenues from loans. We estimate the parameters of said distribution under these alternate assumptions: Pareto, log-normal, Fréchet, and Weibull. With the estimated distributions, we run Anderson-Darling tests of the hypothesis that each of these parametric distributions well approximates the empirical distribution. While we can reject the hypotheses that the distribution of interest revenues from loans is Pareto, Fréchet or Weibull, we cannot reject the hypothesis that the distribution is log-normal. Based on this result, we need to establish a theoretical linkage between the distribution of interest revenues from loans and the banks’ efficiency distribution.

Assume that banks’ efficiency $x \equiv 1/a$ is distributed log-normal: $\log(x) \sim \mathcal{N}(\mu, \sigma)$. In the

unconstrained equilibrium, and under the assumption that a bank is lending in the interbank market, revenues from domestic loans are:

$$r_L \cdot L = \left[\frac{\varepsilon}{p(\varepsilon - 1)} [ac_L + r_M + (1 - p)] \right]^{1-\varepsilon} A. \quad (\text{E.1})$$

Assuming that the term $(r_M + 1 - p)$ is “small” relative to ac_L , revenues from loans can be approximated as:

$$r_L \cdot L \approx \left[\frac{\varepsilon}{p(\varepsilon - 1)} ac_L \right]^{1-\varepsilon} A = H a^{1-\varepsilon} = H x^{\varepsilon-1},$$

where $H \equiv \left[\frac{\varepsilon c_L}{p(\varepsilon-1)} \right]^{1-\varepsilon} A$. Hence:

$$\log(r_L \cdot L) \approx \log(H) + (\varepsilon - 1) \log(x),$$

where $\log(x) \sim \mathcal{N}(\mu, \sigma)$ implies that $\log(r_L \cdot L) \sim \mathcal{N}(\mu_L, \sigma_L)$. As a result, the distribution of interest revenues from loans can be approximated by a log-normal distribution with parameters:

$$\mu_L = (\varepsilon - 1)\mu + \log(H) \quad (\text{E.2})$$

$$\sigma_L = (\varepsilon - 1)\sigma. \quad (\text{E.3})$$

The maximum-likelihood estimates, conditional on the distribution of the interest revenues from loans being log-normal, deliver $\mu_L = 5.96$ and $\sigma_L = 1.93$. Then we impose that $\mu_L = (\varepsilon - 1)\mu + \log(H) = 19.78$ and $\sigma_L = (\varepsilon - 1)\sigma = 1.93$ in the calibration.

F.2 Jointly Calibrated Parameters

Table E.1 reports the parameters that are calibrated to match the moments of interest. The implied parameters of the efficiency distribution, from equations (E.2) and (E.3), are $\mu = 5.4$, $\sigma = 0.57$.

Table C.2: **Summary Statistics.**

	Mean	Median	St. Dev.	<i>N</i>
Loans and Leases (Billions)				
Unexposed Subsidiaries	9.750	1.011	21.864	34
Exposed Subsidiaries	28.246	10.747	32.549	7
Unexposed Branches	3.042	0.352	7.631	90
Exposed Branches	7.095	3.274	8.559	22
Transfers (Millions)				
Unexposed Branches	-2.252	0.040	10.421	90
Exposed Branches	-8.761	-4.521	18.234	22
Retail Deposits (Billions)				
Unexposed Subsidiaries	4.640	0.224	12.462	34
Exposed Subsidiaries	8.058	0.269	13.329	7
Wholesale Deposits (Billions)				
Unexposed Subsidiaries	4.614	0.360	10.603	34
Exposed Subsidiaries	12.060	0.466	17.586	7
Unexposed Branches	4.758	0.109	10.509	90
Exposed Branches	17.119	9.332	19.653	22

Note: All summary statistics reported are an average of observations from 2007-Q1 to 2010-Q4 (pre-crisis), except for the number of observations, which is for 2010-Q4. Statistics are reported using the same definition of exposure as in the baseline specification in the body of the paper: a bank is exposed if it has positive GIIPS sovereign debt holdings.

Source: US Structure Data for US Offices of Foreign Banking Organizations - Selected Assets and Liabilities of Domestic and Foreign-Owned US Commercial Banks plus US Branches and Agencies of Foreign Banks.

Table C.3: **Intensive margin of Loans: Branches versus Subsidiaries.** Robustness.

	(1)		(2)		(3)		(4)		(5)		(6)		(7)	
	Subs	Branches	Subs	Branches	Subs	Branches	Subs	Branches	Subs	Branches	Subs	Branches	Subs	Branches
Crisis	0.0749*** (0.0205)	0.305*** (0.0658)	0.174 (0.129)	0.245** (0.0923)	0.179 (0.121)	0.172 (0.135)	0.163 (0.119)	0.167 (0.133)	0.171 (0.119)	0.175 (0.126)	0.181 (0.116)	0.176 (0.124)	0.182 (0.118)	0.182 (0.119)
Exposed			-0.864* (0.417)	0.672 (0.446)	-0.840* (0.414)	0.250 (0.243)	-2.147*** (0.0426)	0.0784 (0.517)	-2.201*** (0.0412)	0.229 (0.442)	-236,246*** (559.9)	-3,646 (8,199)	-10,045*** (34.23)	-215.3 (309.6)
Crisis \times exp	0.433* (0.207)	-0.590*** (0.146)	-0.0687 (0.172)	-0.460*** (0.144)	-0.163 (0.174)	-0.236 (0.209)	-0.102 (0.128)	-0.214 (0.167)	-0.109 (0.127)	-0.298* (0.148)	-1,895 (1,680)	-8,073*** (2,623)	-103.7 (102.7)	-384.8*** (125.7)
Constant	14.52*** (0.0162)	13.39*** (0.0201)	14.69*** (0.108)	13.24*** (0.109)	14.62*** (0.0749)	13.36*** (0.0537)	14.70*** (0.0394)	13.38*** (0.0756)	14.70*** (0.0391)	13.37*** (0.0678)	15.49*** (0.0382)	13.40*** (0.0546)	15.35*** (0.0388)	13.41*** (0.0538)
No. of Obs.	926	2,524	926	2,524	926	2,524	926	2,524	926	2,524	926	2,524	926	2,524
R ²	0.399	0.367	0.403	0.369	0.403	0.365	0.403	0.365	0.401	0.365	0.410	0.365	0.415	0.366

Note: The different specifications show the results for different definitions of exposure. We define a bank as “exposed” as follows: (1) if from a country in the euro zone; (2) if from a country in Europe; (3) if it has GIIPS sovereign debt holdings above the sample median; (4) if its ratio of GIIPS sovereign debt holdings over assets is above the sample median; (5) if its ratio of GIIPS sovereign debt holdings over Tier one capital is above the sample median. Specifications (6) and (7) use the actual exposure levels: sovereign debt holdings over assets in (6) and sovereign debt holdings over Tier 1 capital in (7). All specifications include country fixed effects. Robust standard errors in parentheses. Levels of significance are denoted *** $p < 0.01$, ** $p < 0.05$, and * $p < 0.1$. Source: US Structure Data for US Offices of Foreign Banking Organizations - Selected Assets and Liabilities of Domestic and Foreign-Owned US Commercial Banks plus US Branches and Agencies of Foreign Banks.

Table C.4: **Intensive Margin of Loans: Branches versus Subsidiaries, Triple Differences**

	$\ln(\text{Total Loans})$
Crisis	0.0607 (0.143)
Exposed	0.0138 (0.422)
Branch	-1.015*** (0.300)
Crisis \times exposed	0.0571 (0.137)
Crisis \times branch	0.153 (0.186)
Exposed \times branch	0.239 (0.282)
Crisis \times exposed \times branch	-0.507** (0.191)
Constant	14.37*** (0.253)
Country FE	Yes
No. of Obs.	3,402
R ²	0.636

Note: Robust standard errors in parentheses. Levels of significance are denoted by *** $p < 0.01$, ** $p < 0.05$, and * $p < 0.1$. Source: US Structure Data for US Offices of Foreign Banking Organizations - Selected Assets and Liabilities of Domestic and Foreign-Owned US Commercial Banks plus US Branches and Agencies of Foreign Banks.

Table C.5: Intensive Margin of Loans, Controlling for Bank International Exposure

	$\ln(\text{Total Loans})$			
	Subsidiaries		Branches	
Crisis	0.149*	0.165*	0.220**	-0.796**
	(0.0691)	(0.0836)	(0.103)	(0.320)
Exposed	-1.005***	-5.419**	0.394*	0.250
	(0.276)	(2.423)	(0.211)	(0.959)
Crisis \times exposed	-0.0924	-2.736	-0.489***	0.570*
	(0.0986)	(3.052)	(0.115)	(0.301)
% of US assets	-0.174***	-0.166***	-0.628***	-2.060
	(0.00652)	(0.00776)	(0.0723)	(9.877)
Crisis \times % of US assets		-0.0700***		10.11***
		(0.0101)		(3.392)
Exposed \times % of US assets		44.08*		1.421
		(22.79)		(9.873)
Crisis \times Exposed \times % of US assets		26.35		-10.53***
		(31.35)		(3.369)
Constant	14.76***	14.76***	13.38***	13.53***
	(0.0623)	(0.0655)	(0.0551)	(0.964)
Country FE	Yes	Yes	Yes	Yes
No. of Obs.	926	926	2,524	2,524
R ²	0.563	0.563	0.694	0.694

Note: Robust standard errors in parentheses. Levels of significance are denoted by *** $p < 0.01$, ** $p < 0.05$, and * $p < 0.1$. Source: US Structure Data for US Offices of Foreign Banking Organizations - Selected Assets and Liabilities of Domestic and Foreign-Owned US Commercial Banks plus US Branches and Agencies of Foreign Banks.

Table C.6: **Intensive and Extensive Margin of Intrafirm Transfers between European Parents and their Branches.**
Robustness.

	(1)		(2)		(3)		(4)		(5)		(6)		(7)	
	$prob(T > 0)$	T	$prob(T > 0)$	T	$prob(T > 0)$	T	$prob(T > 0)$	T	$prob(T > 0)$	T	$prob(T > 0)$	T	$prob(T > 0)$	T
Crisis	0.0838 (0.0616)	1.122 (1.962)	0.200*** (0.0605)	0.284 (1.320)	0.290*** (0.0563)	1.488 (1.459)	0.307*** (0.0559)	2.721 (1.717)	0.320*** (0.0559)	2.944 (1.813)	0.350*** (0.0553)	3.281* (1.911)	0.345*** (0.0554)	3.218* (1.889)
Exposed	-0.629*** (0.0676)		-0.948*** (0.0763)	-10.23*** (3.490)	-0.927*** (0.104)	-14.50*** (4.261)	-0.717*** (0.105)	-10.97* (5.741)	-0.579*** (0.104)	-6.772 (6.570)	-15.261*** (2.738)	-66.961 (125,918)	-681.0*** (112.7)	-3,169 (4,133)
Crisis \times exp	1.221*** (0.130)	9.182** (3.543)	0.911*** (0.132)	15.59*** (4.087)	1.042*** (0.183)	20.63*** (5.683)	0.958*** (0.193)	9.624 (6.631)	0.820*** (0.192)	7.334 (7.243)	13.522*** (4.250)	97,920 (85,744)	594.4*** (169.5)	4,439 (3,728)
Constant	0.335*** (0.0356)	-3.670*** (0.550)	0.361*** (0.0343)	-1.477** (0.566)	0.253*** (0.0318)	-2.156*** (0.427)	0.226*** (0.0315)	-2.645*** (0.572)	0.213*** (0.0315)	-3.052*** (0.669)	0.210*** (0.0312)	-3.453*** (0.609)	0.216*** (0.0312)	-3.399*** (0.591)
No. of Obs.	2,682	2,658	2,682	2,658	2,682	2,658	2,682	2,658	2,682	2,658	2,682	2,658	2,682	2,658
R ²		0.147		0.183		0.190		0.151		0.137		0.130		0.131

Note: The different specifications show the results for different definitions of exposure. We define a bank as “exposed” as follows: (1) if from a country in the euro zone; (2) if from a country in Europe; (3) if it has GIIPS sovereign debt holdings above the sample median; (4) if its ratio of GIIPS sovereign debt holdings over assets is above the sample median; (5) if its ratio of GIIPS sovereign debt holdings over Tier one capital is above the sample median. Specifications (6) and (7) use the actual exposure levels: sovereign debt holdings over assets in (6) and sovereign debt holdings over Tier 1 capital in (7). Robust standard errors in parentheses. Levels of significance are denoted *** $p < 0.01$, ** $p < 0.05$, and * $p < 0.1$.

Source: Report of Assets and Liabilities of US Branches and Agencies of Foreign Banks (FFIEC 002).

Table C.7: **Intensive Margin of Intrafirm Transfers, Controlling for Bank International Exposure**

	<i>T</i>	
Crisis	1.156 (2.269)	0.730 (3.584)
Exposed	-11.27** (5.114)	-7.881 (6.387)
Crisis \times exposed	13.56*** (4.418)	14.87** (5.132)
% of US assets	0.274** (0.116)	34.37 (31.64)
Crisis \times % of US assets		4.088 (19.27)
Exposed \times % of US assets		-34.10 (31.64)
Crisis \times exposed \times % of US assets		-12.61 (19.10)
Constant	-1.741* (0.940)	-5.149 (3.870)
No. of Obs.	2,638	2,638
R ²	0.179	0.179

Note: Robust standard errors in parentheses. Levels of significance are denoted by *** $p < 0.01$, ** $p < 0.05$, and * $p < 0.1$. Source: Report of Assets and Liabilities of US Branches and Agencies of Foreign Banks (FFIEC 002).

Table C.8: **Intensive Margin of Wholesale and Retail Deposits: Subsidiaries.** Robustness.

	(1)		(2)		(3)		(4)		(5)		(6)		(7)	
	Retail	Wholesale	Retail	Wholesale	Retail	Wholesale	Retail	Wholesale	Retail	Wholesale	Retail	Wholesale	Retail	Wholesale
Crisis	0.476** (0.175)	-0.0297 (0.138)	0.449*** (0.157)	0.0717 (0.175)	0.451*** (0.144)	0.0647 (0.160)	0.485*** (0.144)	0.0517 (0.157)	0.514*** (0.146)	0.0517 (0.157)	0.564*** (0.161)	0.126 (0.149)	0.556*** (0.158)	0.134 (0.153)
Exposed			-2.022** (0.898)	-1.046 (0.827)	-2.093** (0.950)	-1.072 (0.843)	-10.33*** (0.0515)	-10.49*** (0.0608)	-12.14*** (0.0509)	-10.49*** (0.0608)	-506,111*** (1,374)	-420,637*** (1,491)	-21,770*** (112.4)	-20,330*** (111.0)
Crisis \times exp	0.400 (0.256)	0.512** (0.219)	0.474 (0.472)	0.0427 (0.251)	0.772 (0.617)	0.134 (0.284)	-0.0580 (0.184)	-0.0272 (0.205)	-0.0862 (0.186)	-0.0272 (0.205)	1,391 (4,123)	-2,593 (2,740)	165.6 (337.3)	-62.59 (227.8)
Constant	13.33*** (0.0460)	13.91*** (0.0372)	13.74*** (0.184)	14.11*** (0.180)	13.59*** (0.124)	14.03*** (0.118)	14.20*** (0.0476)	14.75*** (0.0527)	14.32*** (0.0482)	14.75*** (0.0527)	15.43*** (0.0525)	15.63*** (0.0417)	15.13*** (0.0516)	15.55*** (0.0436)
No. of Obs.	922	914	922	914	922	914	922	914	922	914	922	914	922	914
R ²	0.425	0.449	0.441	0.453	0.442	0.453	0.510	0.493	0.498	0.493	0.466	0.478	0.482	0.498

Note: The different specifications show the results for different definitions of exposure. We define a bank as “exposed” as follows: (1) if from a country in the euro zone; (2) if from a country in Europe; (3) if it has GIIPS sovereign debt holdings above the sample median; (4) if its ratio of GIIPS sovereign debt holdings over assets is above the sample median; (5) if its ratio of GIIPS sovereign debt holdings over Tier one capital is above the sample median. Specifications (6) and (7) use the actual exposure levels: sovereign debt holdings over assets in (6) and sovereign debt holdings over Tier 1 capital in (7). All specifications include country fixed effects. Levels of significance are denoted *** $p < 0.01$, ** $p < 0.05$, and * $p < 0.1$.

Source: US Structure Data for US Offices of Foreign Banking Organizations - Selected Assets and Liabilities of Domestic and Foreign-Owned US Commercial Banks plus US Branches and Agencies of Foreign Banks.

Table C.9: **Intensive Margin of Wholesale Deposits: Branches.** Robustness.

	(1)	(2)	(3)	(4)	(5)	(6)	(7)
Crisis	0.792*** (0.173)	0.457** (0.224)	0.375 (0.223)	0.376* (0.216)	0.366 (0.220)	0.330 (0.224)	0.341 (0.222)
Exposed		1.920** (0.725)	1.997*** (0.281)	0.913** (0.445)	0.705 (0.523)	15,168 (15,205)	525.4 (504.4)
Crisis \times exp	-2.100*** (0.264)	-1.105*** (0.357)	-1.418*** (0.366)	-1.644*** (0.294)	-1.548*** (0.300)	-30,477*** (8,119)	-1,262*** (305.0)
Constant	12.85*** (0.0464)	12.43*** (0.186)	12.63*** (0.0800)	12.76*** (0.0896)	12.78*** (0.0958)	12.79*** (0.0834)	12.80*** (0.0800)
No. of Obs.	2,562	2,562	2,562	2,562	2,562	2,562	2,562
R ²	0.653	0.653	0.651	0.641	0.640	0.639	0.640

Note: The different specifications show the results for different definitions of exposure. We define a bank as “exposed” as follows: (1) if from a country in the euro zone; (2) if from a country in Europe; (3) if it has GIIPS sovereign debt holdings above the sample median; (4) if its ratio of GIIPS sovereign debt holdings over assets is above the sample median; (5) if its ratio of GIIPS sovereign debt holdings over Tier one capital is above the sample median. Specifications (6) and (7) use the actual exposure levels: sovereign debt holdings over assets in (6) and sovereign debt holdings over Tier 1 capital in (7). All specifications include country fixed effects. Levels of significance are denoted *** $p < 0.01$, ** $p < 0.05$, and * $p < 0.1$.

Source: US Structure Data for US Offices of Foreign Banking Organizations - Selected Assets and Liabilities of Domestic and Foreign-Owned US Commercial Banks plus US Branches and Agencies of Foreign Banks.

Table C.10: **Intensive Margin of Wholesale and Retail Deposits; Branches vs. Subsidiaries, Controlling by International Exposure**

	$\ln(\text{Retail Deposits})$		$\ln(\text{Wholesale Deposits})$		$\ln(\text{Wholesale Deposits})$	
	Subsidiaries		Subsidiaries		Branches	
Crisis	0.490*** (0.116)	0.385*** (0.0232)	0.111 (0.136)	0.0324 (0.0607)	0.422 (0.420)	-0.636 (0.653)
Exposed	-2.044* (0.924)	-19.68** (7.212)	-1.043 (0.844)	-23.03*** (5.959)	1.647** (0.692)	2.417* (1.255)
Crisis \times exposed	0.528 (0.511)	-52.46 (28.97)	0.00718 (0.243)	5.779 (8.508)	-1.130** (0.505)	0.719 (0.652)
% of US assets	-0.0169*** (0.00140)	-0.209*** (0.00701)	-0.0110*** (0.00116)	-0.156*** (0.00631)	-1.542** (0.565)	6.318 (9.887)
Crisis \times % of US assets		0.193*** (0.007)		0.146*** (0.00642)		10.49 (7.061)
Exposed \times % of US assets		174.2** (72.51)		218.2*** (52.84)		-7.832 (9.780)
Crisis \times exposed \times % of US assets		531.8 (294.8)		-57.21 (86.84)		-18.09** (6.983)
Constant	13.72*** (0.157)	13.85*** (0.117)	14.10*** (0.153)	14.20*** (0.122)	12.74*** (0.219)	11.96*** (0.944)
Country FE	Yes	Yes	Yes	Yes	Yes	Yes
No. of Obs.	946	946	938	938	2,586	2,586
R ²	0.468	0.481	0.468	0.477	0.657	0.658

Note: Robust standard errors in parentheses. Levels of significance are denoted by *** $p < 0.01$, ** $p < 0.05$, and * $p < 0.1$. Source: US Structure Data for US Offices of Foreign Banking Organizations - Selected Assets and Liabilities of Domestic and Foreign-Owned US Commercial Banks plus US Branches and Agencies of Foreign Banks.

Table C.11: **Intensive Margin of Loans; US Banks and Branches and Subsidiaries of non-EU Banks**

	US banks	Foreign non European banks	
		Subsidiaries	Branches
Crisis	0.0685*** (0.0108)	0.114 (0.0730)	0.274** (0.0978)
log real GDP	0.0506 (0.194)	-0.652 (1.219)	2.249* (1.030)
Constant	-9.497*** (1.605)	-1.529 (10.07)	-26.65** (8.538)
Country FE	Yes	Yes	Yes
No. of Obs.	138,764	553	1,498
R ²	0.000	0.278	0.653

Note: Robust standard errors in parentheses. Levels of significance are denoted by *** $p < 0.01$, ** $p < 0.05$, and * $p < 0.1$. Source: US Structure Data for US Offices of Foreign Banking Organizations - Selected Assets and Liabilities of Domestic and Foreign-Owned US Commercial Banks plus US Branches and Agencies of Foreign Banks.

Table E.1: **FDIC Assessment Rates by Risk Categories, in Basis Points**

Source: <https://www.fdic.gov/deposit/insurance/assessments/proposed.html>.

	I	II	III	IV	Total
Assessment Rate	2.5 to 9	9 to 24	18 to 23	30 to 45	2.5 to 45

Table E.1: **Calibrated Parameters**

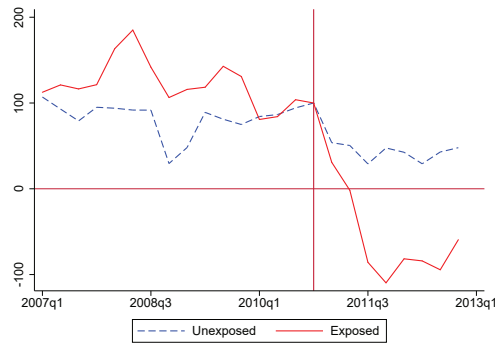
Parameter	Definition	Value
c_L/c_D	Unit Management Cost	12.5
ε	Elasticity of Loan Demand	4.4
A^*	Loan Demand Shifter	5.52×10^{-2}
B^*	Retail Deposit Demand Shifter	1.28×10^5
B_w^*	Wholesale Deposit Demand Shifter	2.31×10^4
F_S	Fixed Cost of Subsidiarization	167
F_B	Fixed Cost of Branching	142



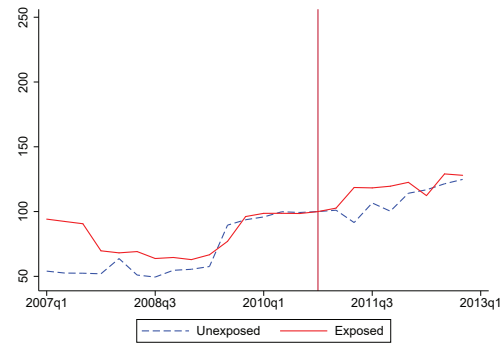
(a) Loans by US subsidiaries of EU banks



(b) Loans by US branches of EU banks



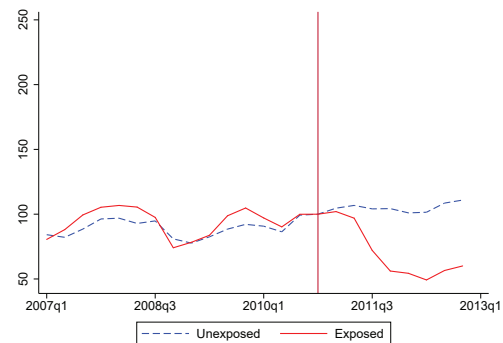
(c) Transfers between US branches and their EU parents



(d) Retail deposits by US subsidiaries of EU banks



(e) Wholesale deposits by US subsidiaries of EU banks

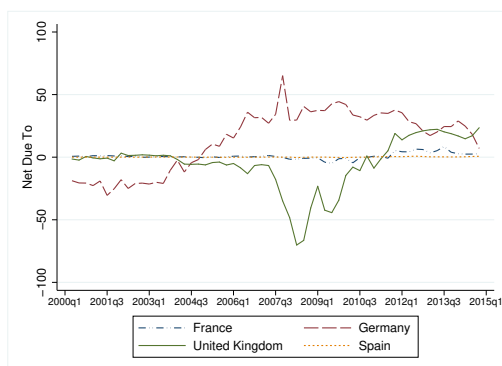


(f) Wholesale deposits by US branches of EU banks

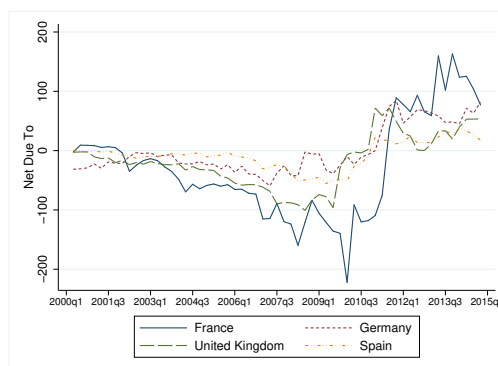
Figure D.4: Evolution of loans, transfers, and deposits in exposed versus unexposed US foreign bank entities

Each panel illustrates the evolution of each variable before and after the crisis, for exposed and unexposed banks separately. Each series is normalized so that the value for 2010 Q4 is equal to 100.

Source: US Structure Data for US Offices of Foreign Banking Organizations - Selected Assets and Liabilities of Domestic and Foreign-Owned US Commercial Banks plus US Branches and Agencies of Foreign Banks.



(a) Nonexposed Banks



(b) Exposed Banks

Figure D.5: **Net Intrafirm Flows by Country of Origin**

Difference between *Net due from related depository institutions* and *Net due to related depository institutions* (items 2 and 5, respectively, from the “Schedule RAL-Assets and Liabilities”), broken down by parent exposure and by country of origin.

Data source: Report of Assets and Liabilities of US Branches and Agencies of Foreign Banks (FFIEC 002). All values are expressed in billions.

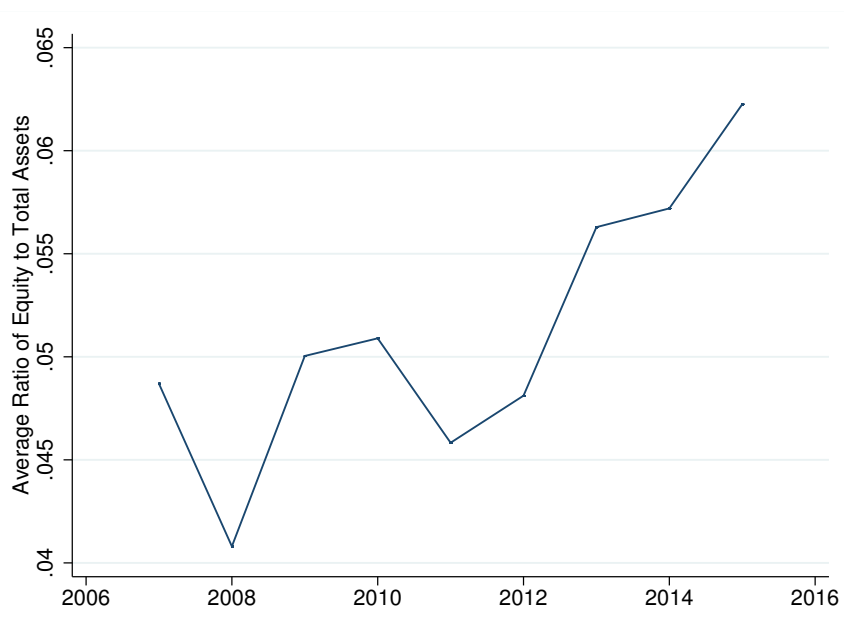


Figure D.6: **Parent Equity over Assets**

Average equity over assets held in European parents of foreign banking organizations in the United States.

Source: S&P Global Market Intelligence.

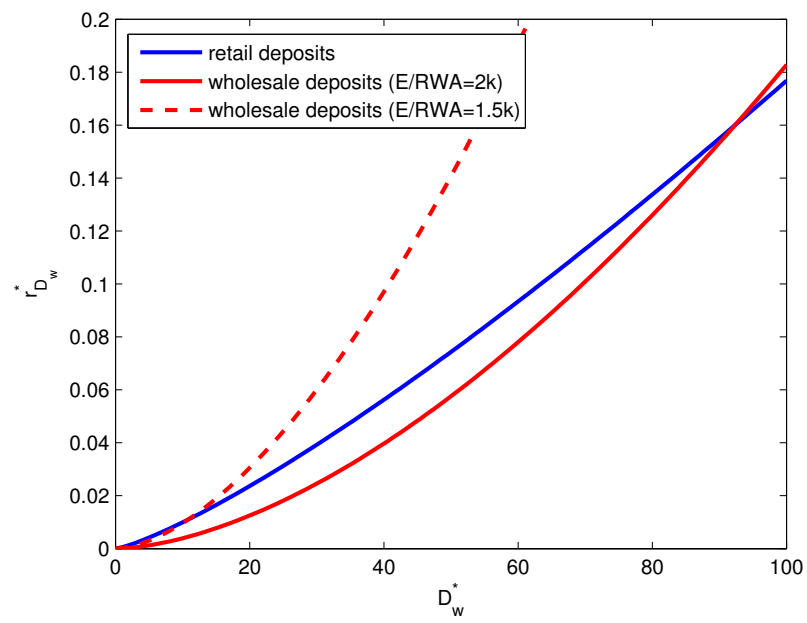


Figure E.1: **Retail and Wholesale Deposit Supply**